

# Transportation

## Trail Creek

### MT-BDF-006272

7/21/2021 Day

23,899 acres at 7/21/2021 0137

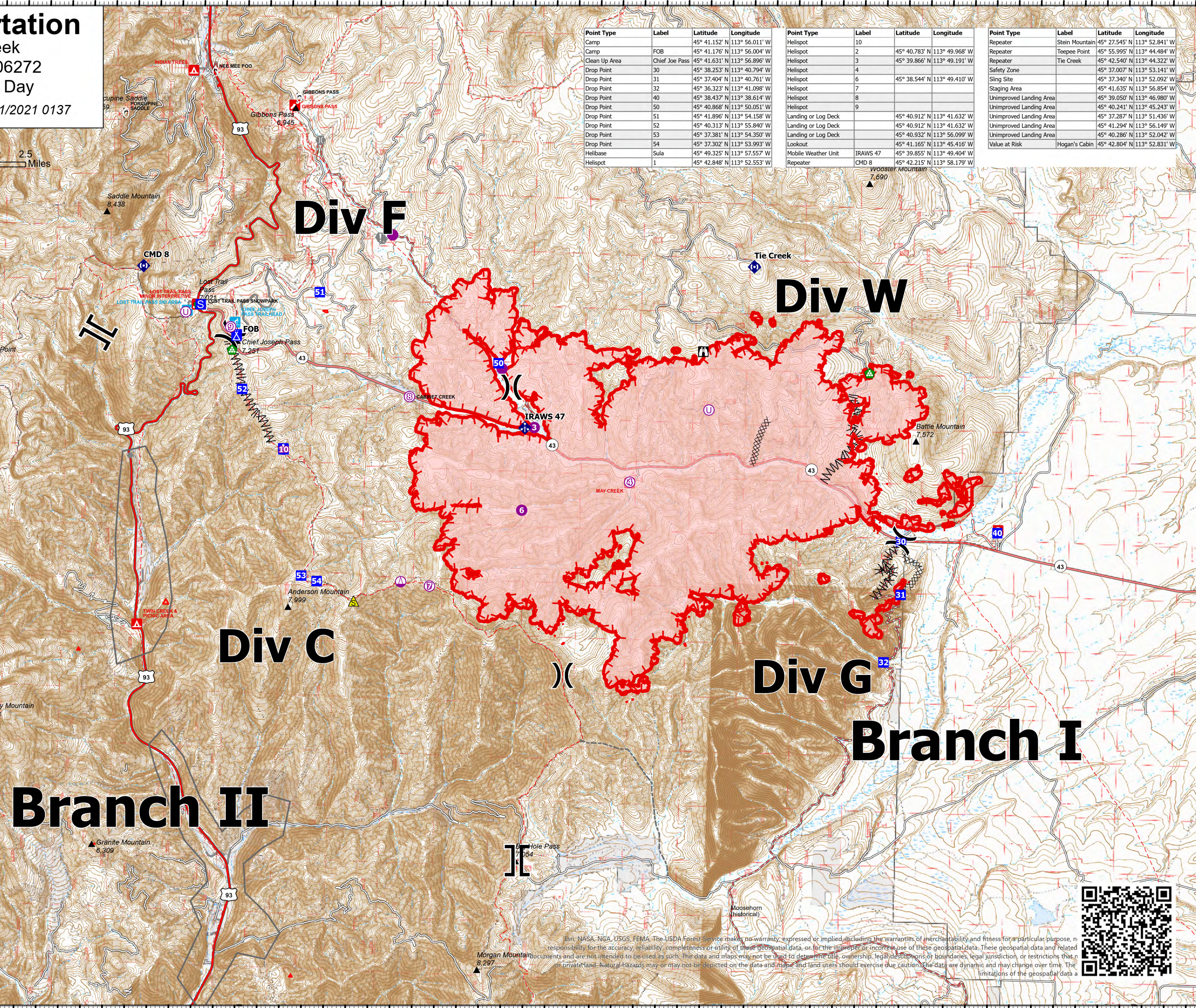


- Helispot
- Sling Site
- Unimproved Landing Area
- Division Break
- Branch Break
- Medical
- Drop Point
- Camp
- Staging Area
- Lookout
- Value at Risk
- Other
- Bridge
- Landing or Log Deck
- Clean Up Area
- Mobile Weather Unit
- Repeater
- Safety Zone
- Completed Dozer Line
- Completed Fuel Break
- Other
- Fire Edge
- Other
- Wildfire Daily Fire Perimeter
- National Designated Trail
- US Primary Route
- State Primary Route

Point Type	Label	Latitude	Longitude
Camp		45° 41.152' N	113° 56.011' W
Camp	FOB	45° 41.176' N	113° 56.004' W
Clean Up Area	Chief Joe Pass	45° 41.631' N	113° 56.896' W
Drop Point	30	45° 38.253' N	113° 40.794' W
Drop Point	31	45° 37.404' N	113° 40.761' W
Drop Point	32	45° 36.323' N	113° 41.098' W
Drop Point	40	45° 38.437' N	113° 38.614' W
Drop Point	50	45° 40.868' N	113° 50.051' W
Drop Point	51	45° 41.896' N	113° 54.158' W
Drop Point	52	45° 40.313' N	113° 55.840' W
Drop Point	53	45° 37.381' N	113° 54.350' W
Drop Point	54	45° 37.302' N	113° 53.993' W
Helibase	Sula	45° 49.325' N	113° 57.557' W
Helispot	1	45° 42.848' N	113° 52.553' W

Point Type	Label	Latitude	Longitude
Helispot	10		
Helispot	2	45° 40.783' N	113° 49.968' W
Helispot	3	45° 39.866' N	113° 49.191' W
Helispot	4		
Helispot	6	45° 38.544' N	113° 49.410' W
Helispot	7		
Helispot	8		
Helispot	9		
Landing or Log Deck		45° 40.912' N	113° 41.632' W
Landing or Log Deck		45° 40.912' N	113° 41.632' W
Landing or Log Deck		45° 40.932' N	113° 56.099' W
Lookout		45° 41.165' N	113° 45.416' W
Mobile Weather Unit	IRAWS 47	45° 39.855' N	113° 49.404' W
Repeater	CMD 8	45° 42.215' N	113° 58.179' W

Point Type	Label	Latitude	Longitude
Repeater	Stein Mountain	45° 27.545' N	113° 52.841' W
Repeater	Teepee Point	45° 55.995' N	113° 44.484' W
Repeater	Tie Creek	45° 42.540' N	113° 44.322' W
Safety Zone		45° 37.007' N	113° 53.141' W
Sling Site		45° 37.340' N	113° 52.092' W
Staging Area		45° 41.635' N	113° 56.854' W
Unimproved Landing Area		45° 39.050' N	113° 46.980' W
Unimproved Landing Area		45° 40.241' N	113° 45.243' W
Unimproved Landing Area		45° 37.287' N	113° 51.436' W
Unimproved Landing Area		45° 41.294' N	113° 56.149' W
Unimproved Landing Area		45° 40.286' N	113° 52.042' W
Value at Risk	Hogan's Cabin	45° 42.804' N	113° 52.831' W



SA Blue Situation Unit  
7/21/2021 0856

North American 1983 Datum, LatLong Grid



Esri, NASA, NGA, USGS, FEMA, The USDA Forest Service makes no warranty, expressed or implied, including the warranties of merchantability and fitness for a particular purpose, or responsibility for the accuracy, reliability, completeness or utility of these geospatial data, or for the improper or incorrect use of these geospatial data. These geospatial data and related documents are not intended to be used as such. The data and maps may not be used to determine title, ownership, legal descriptions, or boundaries, legal jurisdiction, or restrictions that apply to or private land. Natural hazards may or may not be depicted on the data and maps, and land users should exercise due caution. The data are dynamic and may change over time. The limitations of the geospatial data are as follows: