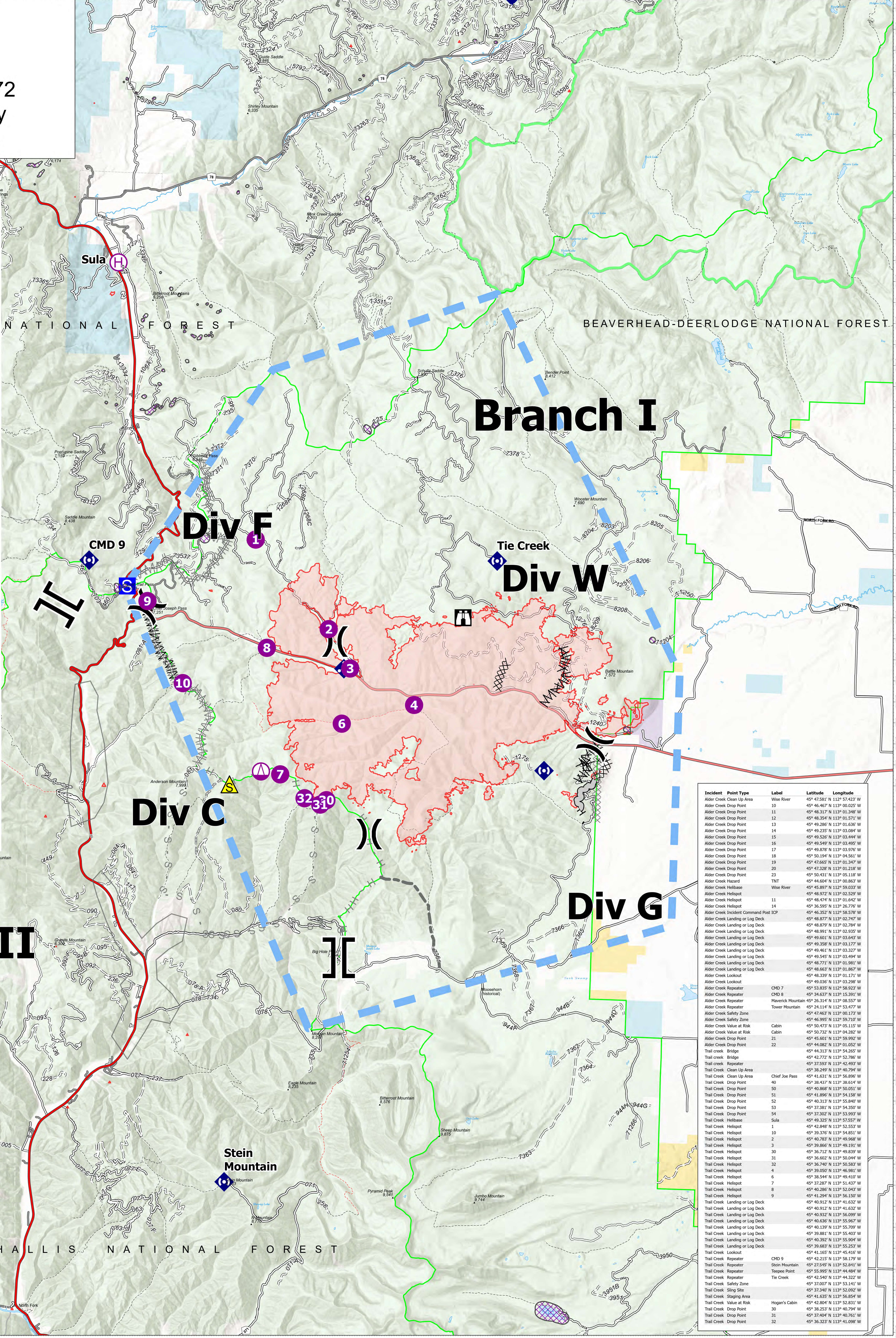


AirOps

Trail Creek
MT-BDF-006272
7/22/2021 Day
24,143 Acres

- Event Point
 - Air Operations
 - Helispot
 - Helibase
 - Sling Site
- Assignment Breaks
 - Division Break
 - Branch Break
- Logistics
 - Staging Area
- Operations
 - Lookout
- Communications
 - Mobile Weather Unit
 - Repeater
- Safety
 - Safety Zone
- Event Line
 - Ops Completed
 - Completed Dozer Line
 - Completed Fuel Break
 - Completed Hand Line
 - Ops Planned
 - Planned Dozer Line
 - Planned Fuel Break
 - Planned Hand Line
 - Planned Secondary Line
- Reference
 - Access or Improved Road
 - Other
- Air Ops
 - Temporary Flight Restriction
- Event Polygon
- Polygon Type
 - Other
 - Wildfire Daily Fire Perimeter
 - Paved
 - Gravel Road
 - Dirt Road
 - Unimproved Road
- Forest Service Land
- Aerial Fire Retardant Avoidance Areas: Terrestrial
- State Public Lands
- Other State Lands
- BLM Lands
- National Park Service Lands



| Incident Point Type | Label | Latitude | Longitude |
|---------------------------------------|-------------------|---------------|----------------|
| Alder Creek Clean Up Area | Wise River | 45° 47.581' N | 113° 52.423' W |
| Alder Creek Drop Point | 10 | 45° 46.467' N | 113° 00.025' W |
| Alder Creek Drop Point | 11 | 45° 48.317' N | 113° 01.348' W |
| Alder Creek Drop Point | 12 | 45° 48.854' N | 113° 01.571' W |
| Alder Creek Drop Point | 13 | 45° 49.286' N | 113° 01.636' W |
| Alder Creek Drop Point | 14 | 45° 49.235' N | 113° 03.084' W |
| Alder Creek Drop Point | 15 | 45° 49.526' N | 113° 03.444' W |
| Alder Creek Drop Point | 16 | 45° 49.549' N | 113° 03.495' W |
| Alder Creek Drop Point | 17 | 45° 49.878' N | 113° 03.976' W |
| Alder Creek Drop Point | 18 | 45° 50.194' N | 113° 04.561' W |
| Alder Creek Drop Point | 19 | 45° 47.665' N | 113° 01.347' W |
| Alder Creek Drop Point | 20 | 45° 47.238' N | 113° 01.218' W |
| Alder Creek Drop Point | 23 | 45° 50.431' N | 113° 05.118' W |
| Alder Creek Hazard | TNT | 45° 44.604' N | 113° 00.863' W |
| Alder Creek Helibase | Wise River | 45° 45.897' N | 113° 59.033' W |
| Alder Creek Helispot | 11 | 45° 48.972' N | 113° 03.529' W |
| Alder Creek Helispot | 14 | 45° 48.474' N | 113° 01.642' W |
| Alder Creek Helispot | 14 | 45° 36.595' N | 113° 26.776' W |
| Alder Creek Incident Command Post ICP | | 45° 46.352' N | 113° 58.578' W |
| Alder Creek Landing or Log Deck | | 45° 48.877' N | 113° 02.747' W |
| Alder Creek Landing or Log Deck | | 45° 48.879' N | 113° 02.786' W |
| Alder Creek Landing or Log Deck | | 45° 48.991' N | 113° 02.935' W |
| Alder Creek Landing or Log Deck | | 45° 49.601' N | 113° 03.647' W |
| Alder Creek Landing or Log Deck | | 45° 49.358' N | 113° 03.177' W |
| Alder Creek Landing or Log Deck | | 45° 49.461' N | 113° 03.327' W |
| Alder Creek Landing or Log Deck | | 45° 49.545' N | 113° 03.494' W |
| Alder Creek Landing or Log Deck | | 45° 48.771' N | 113° 01.981' W |
| Alder Creek Landing or Log Deck | | 45° 48.865' N | 113° 02.865' W |
| Alder Creek Landing or Log Deck | | 45° 48.339' N | 113° 01.171' W |
| Alder Creek Lookout | | 45° 49.036' N | 113° 03.298' W |
| Alder Creek Repeater | CMD 7 | 45° 53.835' N | 113° 58.922' W |
| Alder Creek Repeater | CMD 8 | 45° 34.637' N | 113° 56.391' W |
| Alder Creek Repeater | Havenock Mountain | 45° 26.314' N | 113° 08.557' W |
| Alder Creek Repeater | Tower Mountain | 45° 24.114' N | 113° 53.477' W |
| Alder Creek Safety Zone | | 45° 47.463' N | 113° 00.173' W |
| Alder Creek Value at Risk | Cabin | 45° 50.472' N | 113° 05.115' W |
| Alder Creek Value at Risk | Cabin | 45° 50.732' N | 113° 04.282' W |
| Alder Creek Drop Point | 21 | 45° 45.601' N | 113° 59.992' W |
| Trail Creek Bridge | 22 | 45° 44.895' N | 113° 01.052' W |
| Trail Creek Bridge | | 45° 44.313' N | 113° 54.265' W |
| Trail Creek Bridge | | 45° 42.772' N | 113° 52.786' W |
| Trail Creek Clean Up Area | | 45° 37.593' N | 113° 42.493' W |
| Trail Creek Clean Up Area | Chief Joe Pass | 45° 41.631' N | 113° 56.896' W |
| Trail Creek Drop Point | 40 | 45° 38.437' N | 113° 38.614' W |
| Trail Creek Drop Point | 50 | 45° 40.888' N | 113° 50.051' W |
| Trail Creek Drop Point | 51 | 45° 41.896' N | 113° 56.158' W |
| Trail Creek Drop Point | 52 | 45° 40.313' N | 113° 55.840' W |
| Trail Creek Drop Point | 53 | 45° 37.381' N | 113° 54.350' W |
| Trail Creek Drop Point | 54 | 45° 37.302' N | 113° 52.993' W |
| Trail Creek Helibase | Sula | 45° 49.235' N | 113° 52.553' W |
| Trail Creek Helispot | 1 | 45° 42.848' N | 113° 52.553' W |
| Trail Creek Helispot | 10 | 45° 39.376' N | 113° 54.851' W |
| Trail Creek Helispot | 2 | 45° 40.783' N | 113° 49.968' W |
| Trail Creek Helispot | 3 | 45° 39.866' N | 113° 56.158' W |
| Trail Creek Helispot | 30 | 45° 36.712' N | 113° 49.839' W |
| Trail Creek Helispot | 31 | 45° 36.602' N | 113° 50.044' W |
| Trail Creek Helispot | 32 | 45° 36.740' N | 113° 50.583' W |
| Trail Creek Helispot | 4 | 45° 39.866' N | 113° 56.158' W |
| Trail Creek Helispot | 6 | 45° 38.544' N | 113° 49.410' W |
| Trail Creek Helispot | 7 | 45° 37.287' N | 113° 51.437' W |
| Trail Creek Helispot | 8 | 45° 40.286' N | 113° 52.043' W |
| Trail Creek Helispot | 9 | 45° 41.294' N | 113° 56.158' W |
| Trail Creek Landing or Log Deck | | 45° 40.912' N | 113° 41.632' W |
| Trail Creek Landing or Log Deck | | 45° 40.932' N | 113° 56.099' W |
| Trail Creek Landing or Log Deck | | 45° 40.836' N | 113° 56.967' W |
| Trail Creek Landing or Log Deck | | 45° 40.139' N | 113° 55.709' W |
| Trail Creek Landing or Log Deck | | 45° 39.881' N | 113° 55.403' W |
| Trail Creek Landing or Log Deck | | 45° 40.392' N | 113° 55.909' W |
| Trail Creek Landing or Log Deck | | 45° 41.165' N | 113° 45.418' W |
| Trail Creek Lookout | | 45° 41.165' N | 113° 45.418' W |
| Trail Creek Repeater | CMD 9 | 45° 42.215' N | 113° 58.179' W |
| Trail Creek Repeater | Stein Mountain | 45° 27.545' N | 113° 52.841' W |
| Trail Creek Repeater | Towne Point | 45° 55.995' N | 113° 46.484' W |
| Trail Creek Repeater | The Creek | 45° 42.540' N | 113° 44.322' W |
| Trail Creek Safety Zone | | 45° 37.007' N | 113° 53.141' W |
| Trail Creek Sling Site | | 45° 37.340' N | 113° 52.092' W |
| Trail Creek Staging Area | | 45° 41.035' N | 113° 56.856' W |
| Trail Creek Value at Risk | Hogan's Cabin | 45° 42.804' N | 113° 52.831' W |
| Trail Creek Drop Point | 30 | 45° 38.253' N | 113° 40.794' W |
| Trail Creek Drop Point | 31 | 45° 37.404' N | 113° 40.761' W |
| Trail Creek Drop Point | 32 | 45° 36.323' N | 113° 41.098' W |

Branch II

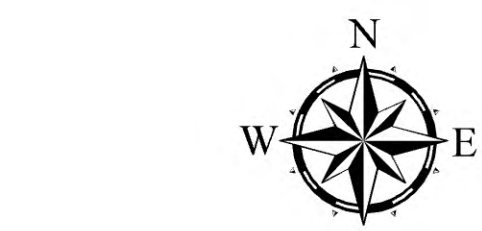
Branch I

Div F

Div W

Div C

Div G



Fire perimeter updated from Acres from IR on 7/22/2021 0005

Flight Restriction Information
Alder Creek - 1/2315- 12,500ft ceiling
Trail Creek - 1/2310 - 12,500ft ceiling



SA Blue Team
7/22/2021 0832
North American 1983 Datum. LatLong Grid