

Transportation

Trail Creek

MT-BDF-006272

7/22/2021 Day

24,143 acres at 7/22/2021 0015

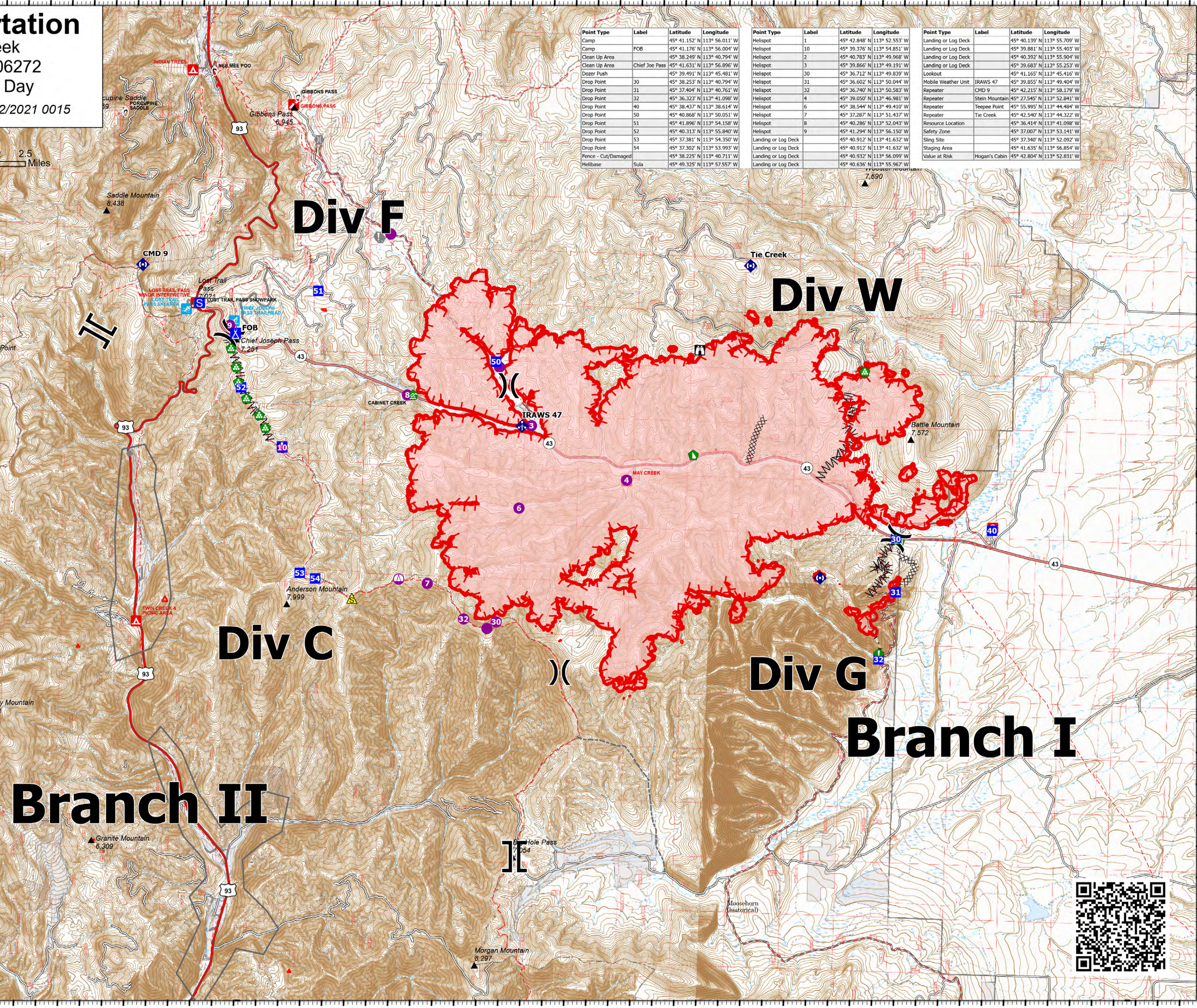


- Helispot
- Sling Site
- Division Break
- Branch Break
- Medical
- Drop Point
- Camp
- Staging Area
- Lookout
- Value at Risk
- Other
- Bridge
- Water Development or Draft Site
- Resource Location
- Landing or Log Deck
- Fence - Cut/Damaged
- Dozer Push
- Clean Up Area
- Mobile Weather Unit
- Repeater
- Safety Zone
- Completed Dozer Line
- Completed Fuel Break
- Completed Hand Line
- Access or Improved Road
- Other
- Fire Edge
- Other
- Wildfire Daily Fire Perimeter
- National Designated Trail
- US Primary Route
- State Primary Route

Point Type	Label	Latitude	Longitude
Camp	FOB	45° 41.176' N	113° 56.004' W
Clean Up Area	Chief Joe Pass	45° 41.631' N	113° 56.896' W
Dozer Push		45° 39.491' N	113° 45.481' W
Drop Point	30	45° 38.253' N	113° 40.794' W
Drop Point	31	45° 37.404' N	113° 40.761' W
Drop Point	32	45° 36.323' N	113° 40.794' W
Drop Point	40	45° 38.437' N	113° 38.614' W
Drop Point	50	45° 40.868' N	113° 50.051' W
Drop Point	51	45° 41.896' N	113° 54.158' W
Drop Point	52	45° 40.313' N	113° 55.840' W
Drop Point	53	45° 37.381' N	113° 54.350' W
Drop Point	54	45° 37.302' N	113° 53.993' W
Fence - Cut/Damaged		45° 38.225' N	113° 40.711' W
Helibase	Sula	45° 49.325' N	113° 57.557' W

Point Type	Label	Latitude	Longitude
Helispot	1	45° 42.848' N	113° 52.553' W
Helispot	10	45° 39.376' N	113° 54.851' W
Helispot	2	45° 40.783' N	113° 49.968' W
Helispot	3	45° 39.866' N	113° 49.191' W
Helispot	30	45° 36.712' N	113° 49.839' W
Helispot	31	45° 36.602' N	113° 50.044' W
Helispot	32	45° 36.740' N	113° 50.583' W
Helispot	4	45° 39.050' N	113° 46.981' W
Helispot	6	45° 38.544' N	113° 49.410' W
Helispot	7	45° 37.287' N	113° 51.437' W
Helispot	8	45° 40.286' N	113° 52.043' W
Helispot	9	45° 41.294' N	113° 56.150' W
Landing or Log Deck		45° 40.912' N	113° 41.632' W
Landing or Log Deck		45° 40.912' N	113° 41.632' W
Landing or Log Deck		45° 40.932' N	113° 56.099' W
Landing or Log Deck		45° 40.636' N	113° 55.967' W

Point Type	Label	Latitude	Longitude
Landing or Log Deck		45° 40.139' N	113° 55.709' W
Landing or Log Deck		45° 39.881' N	113° 55.403' W
Landing or Log Deck		45° 40.392' N	113° 55.904' W
Landing or Log Deck		45° 39.683' N	113° 55.253' W
Lookout		45° 41.165' N	113° 45.416' W
Mobile Weather Unit	IRAWS 47	45° 39.855' N	113° 49.404' W
Repeater	CMD 9	45° 42.215' N	113° 58.179' W
Repeater	Stein Mountain	45° 27.545' N	113° 52.841' W
Repeater	Tepee Point	45° 55.995' N	113° 44.484' W
Repeater		45° 42.540' N	113° 44.322' W
Resource Location	Tie Creek	45° 36.540' N	113° 41.098' W
Safety Zone		45° 37.007' N	113° 53.141' W
Sling Site		45° 37.340' N	113° 52.092' W
Staging Area		45° 41.635' N	113° 56.854' W
Value at Risk	Hogan's Cabin	45° 42.804' N	113° 52.831' W



SA Blue Situation Unit
7/22/2021 0617
North American 1983 Datum, LatLong Grid

