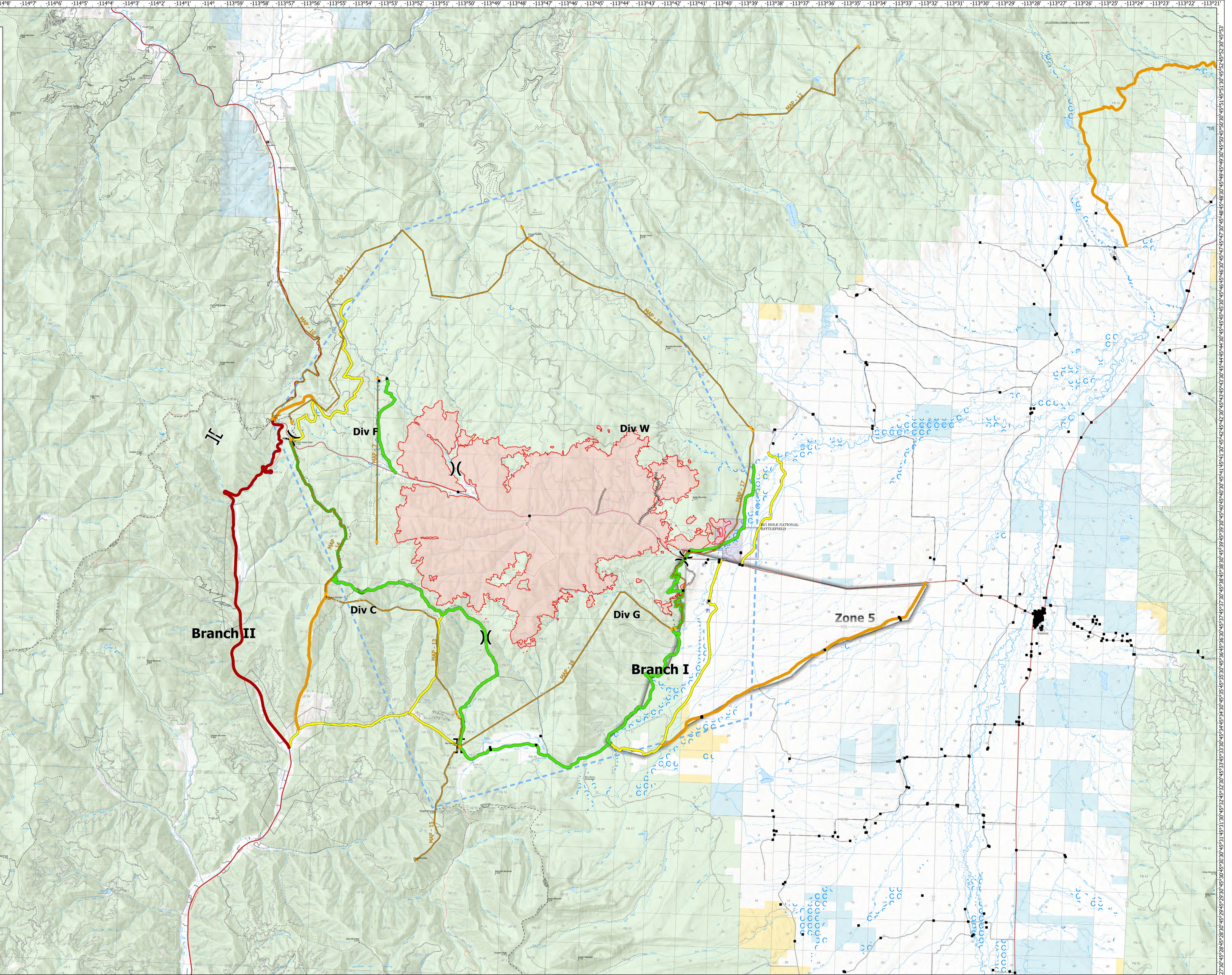
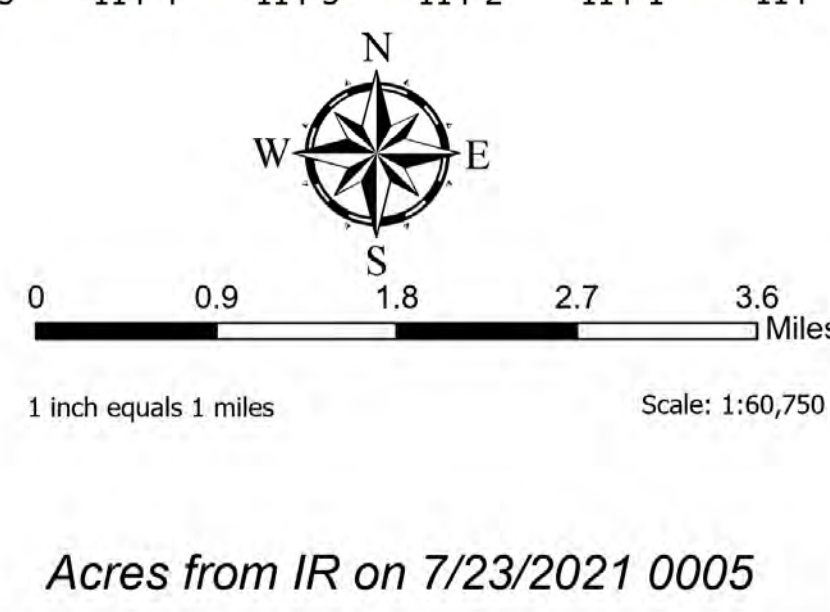


# MAPs

- Management Action Point 6**
- If fire crosses or threatens to cross:  
Consider the following:
- Ensure good communications and cooperation with the Big Hole Battle Field (National Park Service-NPS) & Glacier National Park FMO;
  - Assess the need for Stage 1 alert & warning to primary residences east of the fire utilizing the Beaverhead County Sheriff's Office;
  - Assess archeological resources within the Placer Creek-Battle Mountain area.
- Management Action Point 7**
- If fire crosses or threatens to cross:  
Consider the following:
- Performing a re-evaluation of the Organizational Needs Assessment;
  - Notify Ravalli County Sheriff's Office;
  - Initiate structure protection for the Lost Trail Pass Area;
  - Amending and expanding area/road/trail closures (this includes Ravalli County to the west);
  - Scout & identify additional contingency lines;
  - Engagement with the Beaverhead County Sheriff's Office re: implementation of an Evacuation Plan;
  - Ensure good cooperation with impacted partners, homeowners, & land/homeowners in/around the vicinity of Wisdom, MT;
  - Coordination with MT DOT & MT MPH re: potential flaggers or closure(s) on Highways 43 & 93;
  - Ensure good communication and coordination with neighboring forests (Salmon-Challis & the Bitterroot NFs) & the respective & potentially affected counties
- Management Action Point 10**
- If fire crosses or threatens to cross:  
Consider the following:
- Contact Ravalli County Sheriff's Office and MT DOT
  - Fire near Lost Trail Pass - Initiate evacuations and Lost Trail Pass down Hwy 93 (north) to Lost Trail Hot Springs.
  - Notify residents north of the Lost Trail Hot Springs to the Sula Country Store for evacuation warning.
  - Initiate structure protection plan for Hwy 93 structures.
- Management Action Point 11**
- Contact Ravalli County Sheriff's Office
  - Evacuation warning for Hwy 93 corridor residents
  - Consider expanding fire area closures.
  - Initiate structure protection plan for Hwy 93 structures.
  - Discuss IA responsibilities within the planning area.
- Management Action Point 12**
- Contact Ravalli County Sheriff's Office
  - Evacuation warning for East Fork residents.
  - Consider expanding fire area closures.
- Management Action Point 13**
- If fire is expected to reach MAP 13 (LC EVAC MAP 1) within 24 hrs: Coordinate and begin "Set" protocol for Lemhi County Evacuation notices
  - If fire becomes established across MAP 13 (LC EVAC MAP 1): Coordinate and begin "Go" protocol for Lemhi County Evacuation notices
- Management Action Point 14**
- If fire is expected to reach MAP 14 (LC Evac MAP 2) within 48hrs: Coordinate and Implement "Ready" protocol for evacuation with Lemhi County Sheriff
  - If fire is expected to reach MAP 14 (LC Evac MAP 2) within 24hrs: Coordinate and Implement "Set" protocol for evacuation with Lemhi County Sheriff
  - If fire had become established across MAP 14 (LC Evac MAP 2): Coordinate and Implement "Go" protocol for evacuation with Lemhi County Sheriff.
  - Notify Ravalli County Sheriff's Office - initiate structure protection at Lost Trail Pass.
- Management Action Point 15**
- If fire is expected to reach MAP 15 (LC Evac MAP 3) within 48 hrs: Coordinate and initiate "Ready" protocol for evacuations with Lemhi County Sheriff
  - If fire is expected to reach MAP 15 (LC Evac MAP 3) within 24hrs: Coordinate and initiate "Set" protocol for evacuations with Lemhi County Sheriff
  - If fire becomes established across MAP 15 (LC Evac MAP 3): Coordinate and initiate "Go" protocol for evacuations with Lemhi County Sheriff



**PACE**  
Trail Creek  
MT-BDF-006272  
7/23/2021 Day  
24,435 Acres



- Yellow Alternate
- Orange Contingency
- Red Emergency
- Green Primary
- Black Structures
- Assignment Breaks
- Division Break

- Branch Break
- Ops Completed
- Completed Dozer Line
- Completed Fuel Break
- Completed Hand Line
- Completed Road as Line

- Ops Planned
- Planned Dozer Line
- Planned Fuel Break
- Planned Hand Line
- Planned Secondary Line
- Reference
- Access or Improved Road
- Other

- Air Ops
- Temporary Flight Restriction
- Fire Perimeter
- Fire Edge
- Polygon Type
- Other
- Wildfire Daily Fire Perimeter

- Forest Service Roads Open
- Paved
- Gravel Road
- Dirt Road
- Unimproved Road
- Forest Service Roads Closed
- Forest Service Roads Closed
- Forest Service Land

- Other State Lands
- Bureau of Land Management Lands
- National Park Service Lands
- Evacuation Zone
- Management Action Points - Christensen
- Management Action Points- Trail

SA Blue Team  
7/23/2021 1030  
North American 1983 Datum, Lat,Long Grid