

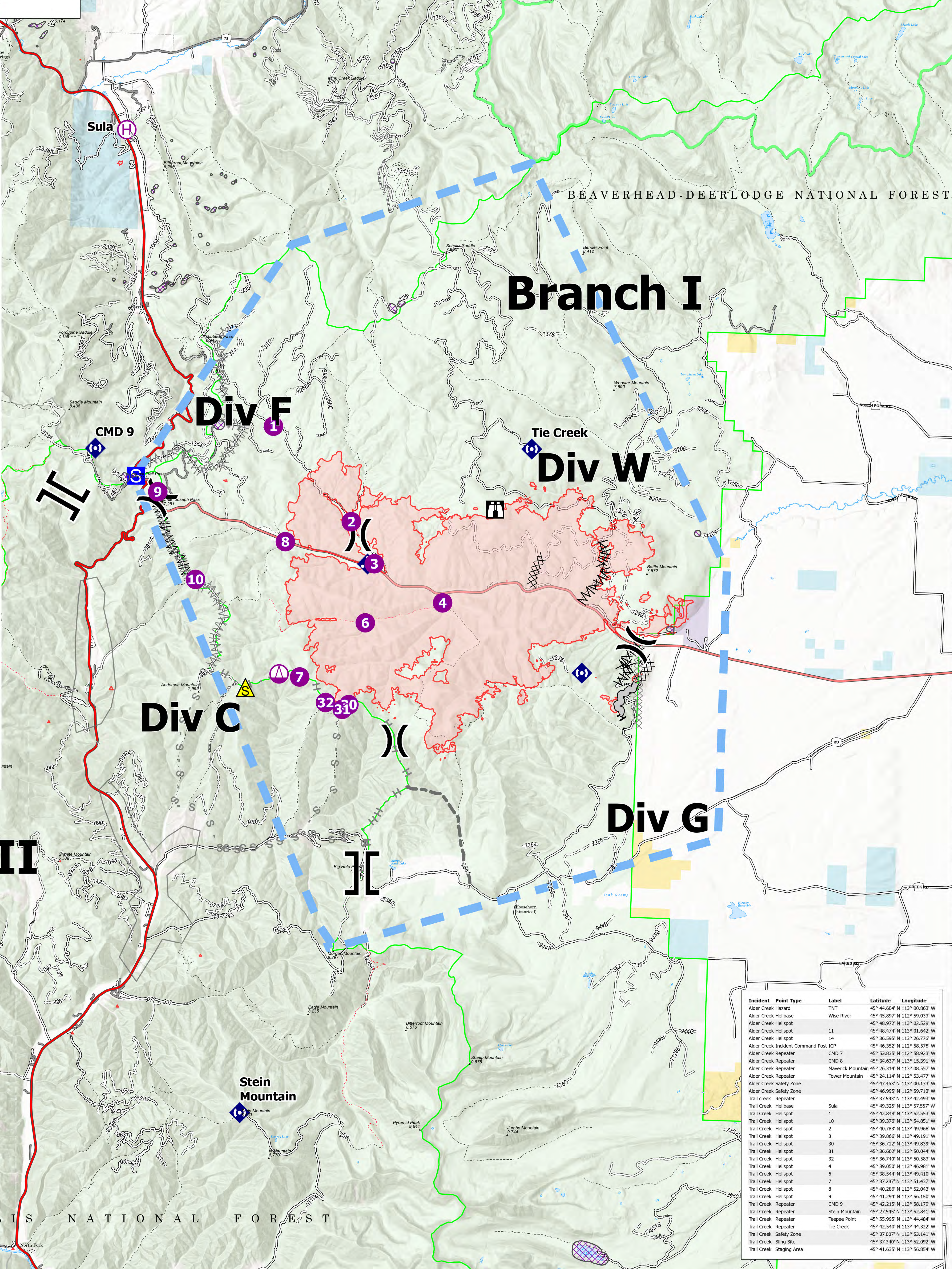
# AirOps

Trail Creek  
 MT-BDF-006272  
 7/23/2021 Day  
 24,143 Acres

TERRA NATIONAL FOREST

BEAVERHEAD-DEERLodge NATIONAL FOREST

- Event Point
- Air Operations
  - Helispot
  - Helibase
  - Sling Site
- Assignment Breaks
  - Division Break
  - Branch Break
- Logistics
  - Staging Area
- Operations
  - Lookout
- Communications
  - Mobile Weather Unit
  - Repeater
- Safety
  - Safety Zone
- Event Line
  - Ops Completed
    - Completed Dozer Line
    - Completed Fuel Break
    - Completed Hand Line
  - Ops Planned
    - Planned Dozer Line
    - Planned Fuel Break
    - Planned Hand Line
    - Planned Secondary Line
- Reference
  - Access or Improved Road
  - Other
- Air Ops
  - Temporary Flight Restriction
- Event Polygon
  - Polygon Type
    - Other
    - Wildfire Daily Fire Perimeter
    - Paved
    - Gravel Road
    - Dirt Road
    - Unimproved Road
    - Forest Service Land
    - Aerial Fire Retardant Avoidance Areas: Terrestrial
    - State Public Lands
    - Other State Lands
    - BLM Lands
    - National Park Service Lands
    - Aerial Suppression Prohibited



Branch II

Branch I

Div G

Div F

Div W

Div C

Stein Mountain

| Incident Point Type               | Label             | Latitude                     | Longitude |
|-----------------------------------|-------------------|------------------------------|-----------|
| Alder Creek Hazard                | TNT               | 45° 44.604' N 113° 00.863' W |           |
| Alder Creek Helibase              | Wise River        | 45° 45.897' N 113° 59.033' W |           |
| Alder Creek Helispot              |                   | 45° 48.972' N 113° 02.529' W |           |
| Alder Creek Helispot              | 11                | 45° 48.474' N 113° 01.642' W |           |
| Alder Creek Helispot              | 14                | 45° 36.595' N 113° 26.776' W |           |
| Alder Creek Incident Command Post | ICP               | 45° 46.352' N 112° 58.578' W |           |
| Alder Creek Repeater              | CMD 7             | 45° 53.335' N 113° 58.523' W |           |
| Alder Creek Repeater              | CMD 8             | 45° 34.637' N 113° 15.391' W |           |
| Alder Creek Repeater              | Maverick Mountain | 45° 26.314' N 113° 08.557' W |           |
| Alder Creek Repeater              | Tower Mountain    | 45° 24.114' N 113° 53.477' W |           |
| Alder Creek Safety Zone           |                   | 45° 47.463' N 113° 00.173' W |           |
| Alder Creek Safety Zone           |                   | 45° 46.995' N 112° 59.710' W |           |
| Trail Creek Repeater              |                   | 45° 37.593' N 113° 42.403' W |           |
| Trail Creek Helibase              | Sula              | 45° 49.325' N 113° 57.557' W |           |
| Trail Creek Helispot              | 1                 | 45° 42.848' N 113° 52.553' W |           |
| Trail Creek Helispot              | 10                | 45° 39.376' N 113° 54.851' W |           |
| Trail Creek Helispot              | 2                 | 45° 40.783' N 113° 49.968' W |           |
| Trail Creek Helispot              | 3                 | 45° 39.866' N 113° 49.191' W |           |
| Trail Creek Helispot              | 30                | 45° 36.712' N 113° 49.839' W |           |
| Trail Creek Helispot              | 31                | 45° 36.502' N 113° 50.944' W |           |
| Trail Creek Helispot              | 32                | 45° 36.740' N 113° 50.583' W |           |
| Trail Creek Helispot              | 4                 | 45° 39.050' N 113° 46.981' W |           |
| Trail Creek Helispot              | 6                 | 45° 38.544' N 113° 49.410' W |           |
| Trail Creek Helispot              | 7                 | 45° 37.287' N 113° 51.437' W |           |
| Trail Creek Helispot              | 8                 | 45° 40.286' N 113° 52.043' W |           |
| Trail Creek Helispot              | 9                 | 45° 41.294' N 113° 56.150' W |           |
| Trail Creek Repeater              | CMD 9             | 45° 42.215' N 113° 58.179' W |           |
| Trail Creek Repeater              | Stein Mountain    | 45° 27.545' N 113° 52.841' W |           |
| Trail Creek Repeater              | Tepee Point       | 45° 55.995' N 113° 44.484' W |           |
| Trail Creek Repeater              | Tie Creek         | 45° 42.540' N 113° 44.322' W |           |
| Trail Creek Safety Zone           |                   | 45° 37.007' N 113° 53.141' W |           |
| Trail Creek Sling Site            |                   | 45° 37.340' N 113° 52.692' W |           |
| Trail Creek Staging Area          |                   | 45° 41.635' N 113° 56.854' W |           |

Flight Restriction Information  
 Alder Creek - 1/2315- 12,500ft ceiling  
 Trail Creek - 1/2310 - 12,500ft ceiling



SA Blue Team  
 7/23/2021 0610  
 North American 1983 Datum, LatLong Grid



Fire perimeter updated from  
 Acres from IR on 7/22/2021 0005

0 1 2 3 4 Miles  
 1 inch equals 1 mile  
 Scale: 1:54,688