

# Branch II Planning

Trail Creek  
MT-BDF-006272  
7/23/2021 Day

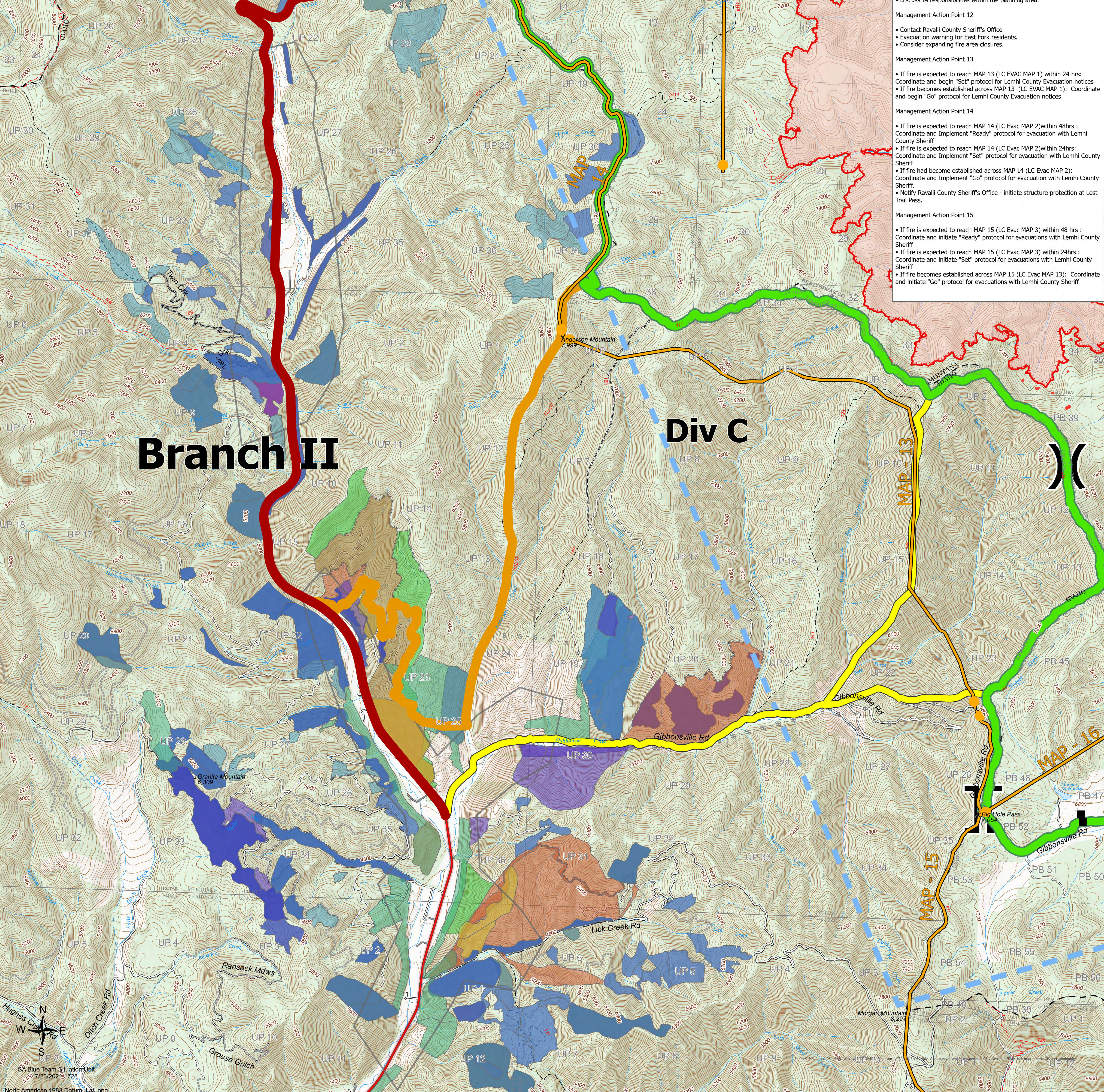
24,435 acres at 7/23/2021 0020

# MAPS

- Management Action Point 6
- If fire crosses or threatens to cross:  
Consider the following:
- Ensure good communications and cooperation with the Big Hole Battle Field (National Park Service-NPS) & Glacier National Park FMO;
  - Assess the need for Stage 1 alert & warning to primary residences east of the fire utilizing the Beaverhead County Sheriff's Office;
  - Assess archeological resources within the Placer Creek-Battle Mountain area.
- Management Action Point 7
- If fire crosses or threatens to cross:  
Consider the following:
- Performing a re-evaluation of the Organizational Needs Assessment;
  - Notify Ravalli County Sheriff's Office;
  - Initiate structure protection for the Lost Trail Pass Area;
  - Amending and expanding area/road/trail closures (this includes Ravalli County to the west);
  - Scout & identify additional contingency lines;
  - Engagement with the Beaverhead County Sheriff's Office re: implementation of an Evacuation Plan;
  - Ensure good cooperation with impacted partners, homeowners, & land/homeowners in/around the vicinity of Wisdom, MT;
  - Coordination with MT DOT & MT MPH re: potential flaggers or closure(s) on Highways 43 & 93;
  - Ensure good communication and coordination with neighboring forests (Salmon-Challis & the Bitterroot NFs) & the respective & potentially affected counties
- Management Action Point 10
- If fire crosses or threatens to cross:  
Consider the following:
- Contact Ravalli County Sheriff's Office and MT DOT
  - Fire near Lost Trail Pass - initiate evacuations from Lost Trail Pass down Hwy 93 (north) to Lost Trail Hot Springs.
  - Notify residents north of the Lost Trail Hot Springs to the Sula Country Store for evacuation warning.
  - Initiate structure protection plan for Hwy 93 structures.
- Management Action Point 11
- Contact Ravalli County Sheriff's Office
  - Evacuation warning for Hwy 93 corridor residents
  - Consider expanding fire area closures
  - Initiate structure protection plan for Hwy 93 structures.
  - Discuss IA responsibilities within the planning area.
- Management Action Point 12
- Contact Ravalli County Sheriff's Office
  - Evacuation warning for East Fork residents.
  - Consider expanding fire area closures.
- Management Action Point 13
- If fire is expected to reach MAP 13 (LC Evac MAP 1) within 24 hrs: Coordinate and begin "Set" protocol for Lemhi County Evacuation notices
  - If fire becomes established across MAP 13 (LC Evac MAP 1): Coordinate and begin "Go" protocol for Lemhi County Evacuation notices
- Management Action Point 14
- If fire is expected to reach MAP 14 (LC Evac MAP 2) within 48hrs: Coordinate and Implement "Ready" protocol for evacuation with Lemhi County Sheriff
  - If fire is expected to reach MAP 14 (LC Evac MAP 2) within 24hrs: Coordinate and Implement "Set" protocol for evacuation with Lemhi County Sheriff
  - If fire had become established across MAP 14 (LC Evac MAP 2): Coordinate and Implement "Go" protocol for evacuation with Lemhi County Sheriff.
  - Notify Ravalli County Sheriff's Office - initiate structure protection at Lost Trail Pass.
- Management Action Point 15
- If fire is expected to reach MAP 15 (LC Evac MAP 3) within 48 hrs: Coordinate and initiate "Ready" protocol for evacuations with Lemhi County Sheriff
  - If fire is expected to reach MAP 15 (LC Evac MAP 3) within 24hrs: Coordinate and initiate "Set" protocol for evacuations with Lemhi County Sheriff
  - If fire becomes established across MAP 15 (LC Evac MAP 13): Coordinate and initiate "Go" protocol for evacuations with Lemhi County Sheriff

**Legend**

Division Break	Branch Break	Management Action Point - Trail
Completed Fuel Break	National Designated Trail	Contingency
Planned Fuel Break	US Primary Route	Emergency
Planned Hand Line	State Primary Route	Primary
Planned Secondary Line	Forest Road	Broadcast Burning - Covers a majority of the unit
Other	Forest Service Road Closed	Burning of Piled Material
Temporary Flight Restriction	Revised Route	Jackpot Burning - Scattered concentrations
Fire Edge	Det (Not Paved)	Mixing of Fuels, Hand or Machine
Other	World Hills/Trade	Pruning to Raise Canopy Height and Discourage Crown Fire
Wildfire Daily Fire Perimeter	Forest Service Land	Rearrangement of Fuels
Completed Fuel Break	State Boundary Fill	Thin-File Fire Burn
Planned Fuel Break	Management Action Point - Trail	Thinning for Hazardous Fuels Reduction
Planned Hand Line	Contingency	Underburn - Low Intensity (Majority of Line)
Planned Secondary Line	Emergency	Vanding - Removal of Fuels by Carrying or Dragging
Other	Primary	
Temporary Flight Restriction	Broadcast Burning - Covers a majority of the unit	
Fire Edge	Burning of Piled Material	
Other	Jackpot Burning - Scattered concentrations	
Wildfire Daily Fire Perimeter	Mixing of Fuels, Hand or Machine	
Completed Fuel Break	Pruning to Raise Canopy Height and Discourage Crown Fire	
Planned Fuel Break	Rearrangement of Fuels	
Planned Hand Line	Thin-File Fire Burn	
Planned Secondary Line	Thinning for Hazardous Fuels Reduction	
Other	Underburn - Low Intensity (Majority of Line)	
Temporary Flight Restriction	Vanding - Removal of Fuels by Carrying or Dragging	



North American 1983 Datum: Lat/Long

SA Blue Team Situation Unit  
7/23/2021 1728