

AirOps

Trail Creek
MT-BDF-006272
7/24/2021 Day
26,539 Acres

Event Point

- Air Operations
- Helispot
- Helibase
- Sling Site

Assignment Breaks

- Division Break
- Branch Break

Logistics

- Staging Area

Operations

- Lookout

Communications

- Mobile Weather Unit
- Repeater

Safety

- Safety Zone

Water

- Water Source

Event Line

Ops Completed

- Completed Dozer Line
- Completed Fuel Break
- Completed Hand Line
- Completed Road as Line

Ops Planned

- Planned Fuel Break
- Planned Hand Line
- Planned Secondary Line

Reference

- Access or Improved Road
- Other

Air Ops

- Temporary Flight Restriction

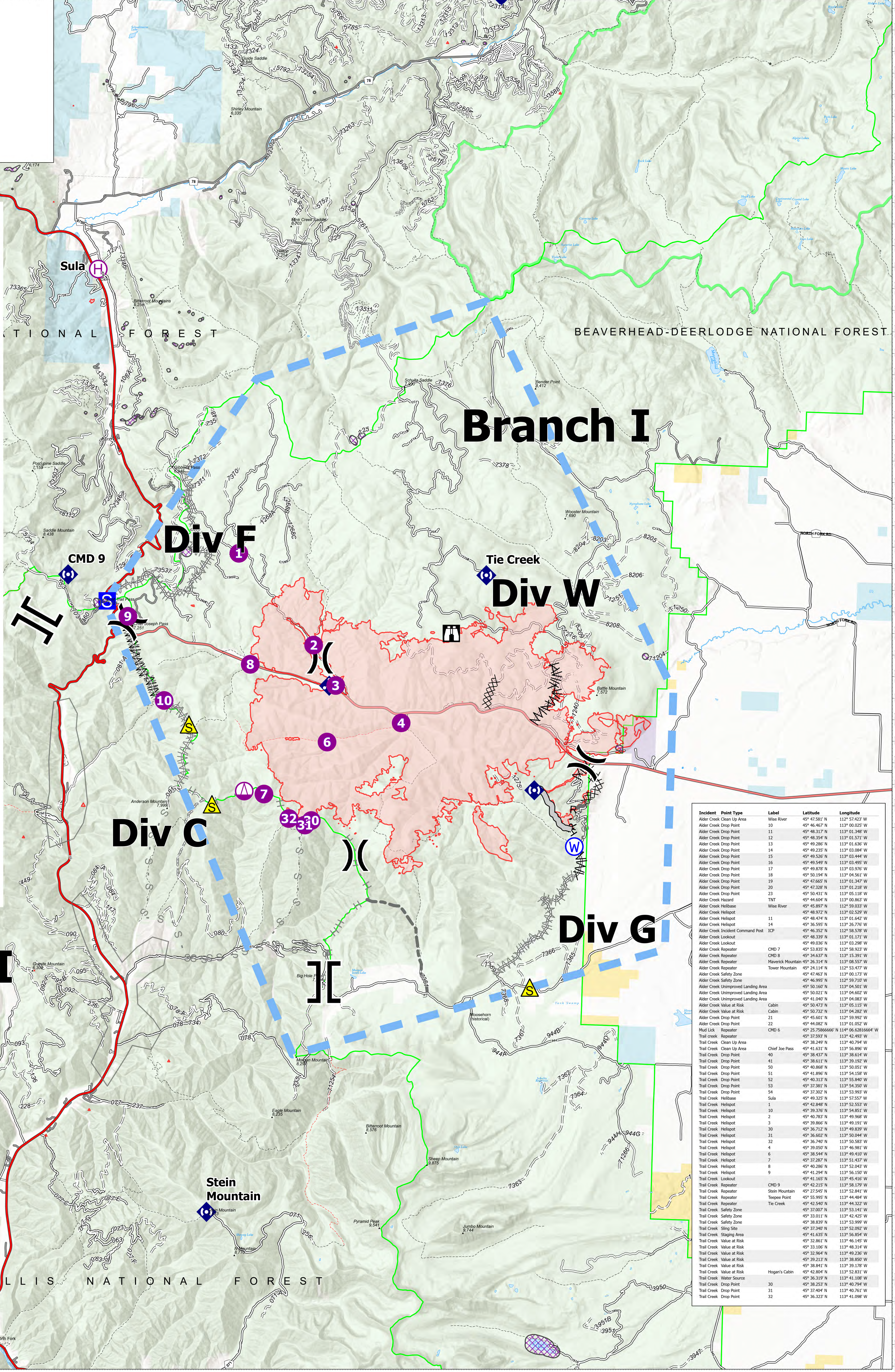
Event Polygon

Polygon Type

- Other
- Wildfire Daily Fire Perimeter
- Paved
- Gravel Road
- Dirt Road
- Unimproved Road

Forest Service Land

- Aerial Fire Retardant Avoidance Areas: Terrestrial
- State Public Lands
- Other State Lands
- BLM Lands
- National Park Service Lands



Incident Point Type	Label	Latitude	Longitude
Alder Creek Clean Up Area	Wise River	45° 47.581' N	113° 57.423' W
Alder Creek Drop Point	10	45° 46.467' N	113° 00.025' W
Alder Creek Drop Point	11	45° 48.317' N	113° 01.348' W
Alder Creek Drop Point	12	45° 48.554' N	113° 01.571' W
Alder Creek Drop Point	13	45° 49.286' N	113° 01.636' W
Alder Creek Drop Point	14	45° 49.233' N	113° 03.084' W
Alder Creek Drop Point	15	45° 49.526' N	113° 03.444' W
Alder Creek Drop Point	16	45° 49.549' N	113° 03.495' W
Alder Creek Drop Point	17	45° 49.878' N	113° 03.970' W
Alder Creek Drop Point	18	45° 50.194' N	113° 04.561' W
Alder Creek Drop Point	19	45° 47.657' N	113° 04.950' W
Alder Creek Drop Point	20	45° 47.328' N	113° 01.218' W
Alder Creek Drop Point	23	45° 50.431' N	113° 05.118' W
Alder Creek Hazard	TNT	45° 44.604' N	113° 00.867' W
Alder Creek Helibase	Wise River	45° 45.907' N	113° 50.023' W
Alder Creek Helispot		45° 48.972' N	113° 02.529' W
Alder Creek Helispot	11	45° 48.474' N	113° 01.642' W
Alder Creek Helispot	14	45° 35.595' N	113° 25.710' W
Alder Creek Incident Command Post	ICP	45° 46.352' N	113° 58.578' W
Alder Creek Lookout		45° 48.339' N	113° 01.171' W
Alder Creek Lookout		45° 49.030' N	113° 03.298' W
Alder Creek Repeater		45° 53.833' N	113° 58.922' W
Alder Creek Repeater	CMD 7	45° 34.637' N	113° 15.391' W
Alder Creek Repeater	Maverick Mountain	45° 26.314' N	113° 06.557' W
Alder Creek Repeater	Tower Mountain	45° 24.114' N	113° 25.477' W
Alder Creek Safety Zone		45° 47.463' N	113° 00.173' W
Alder Creek Safety Zone		45° 46.995' N	113° 59.710' W
Alder Creek Unimproved Landing Area		45° 50.160' N	113° 04.501' W
Alder Creek Unimproved Landing Area		45° 50.521' N	113° 04.602' W
Alder Creek Unimproved Landing Area		45° 41.040' N	113° 04.082' W
Alder Creek Value at Risk	Cabin	45° 50.473' N	113° 05.115' W
Alder Creek Value at Risk	Cabin	45° 40.286' N	113° 50.140' W
Alder Creek Drop Point	21	45° 45.601' N	113° 50.992' W
Alder Creek Drop Point	22	45° 44.082' N	113° 01.052' W
Mud Lick Repeater	CMD 6	45° 25.78666666' N	114° 06.620166667' W
Trail Creek Repeater		45° 37.592' N	113° 45.492' W
Trail Creek Clean Up Area	Chief Joe Pass	45° 38.249' N	113° 40.794' W
Trail Creek Clean Up Area		45° 41.631' N	113° 56.890' W
Trail Creek Drop Point	40	45° 38.457' N	113° 36.694' W
Trail Creek Drop Point	41	45° 38.811' N	113° 36.192' W
Trail Creek Drop Point	50	45° 40.868' N	113° 50.051' W
Trail Creek Drop Point	51	45° 41.896' N	113° 54.158' W
Trail Creek Drop Point	52	45° 40.313' N	113° 55.940' W
Trail Creek Drop Point	53	45° 37.381' N	113° 54.350' W
Trail Creek Drop Point	54	45° 37.302' N	113° 53.993' W
Trail Creek Helibase	Sula	45° 49.325' N	113° 57.557' W
Trail Creek Helispot	1	45° 42.848' N	113° 50.852' W
Trail Creek Helispot	10	45° 39.376' N	113° 54.855' W
Trail Creek Helispot	2	45° 40.783' N	113° 49.968' W
Trail Creek Helispot	3	45° 39.566' N	113° 49.191' W
Trail Creek Helispot	30	45° 36.712' N	113° 49.899' W
Trail Creek Helispot	31	45° 36.602' N	113° 50.044' W
Trail Creek Helispot	32	45° 36.740' N	113° 50.587' W
Trail Creek Helispot	4	45° 39.502' N	113° 46.987' W
Trail Creek Helispot	6	45° 38.544' N	113° 49.410' W
Trail Creek Helispot	7	45° 37.287' N	113° 51.437' W
Trail Creek Helispot	8	45° 40.286' N	113° 50.140' W
Trail Creek Helispot	9	45° 41.294' N	113° 52.150' W
Trail Creek Lookout		45° 41.165' N	113° 45.416' W
Trail Creek Repeater	CMD 9	45° 42.215' N	113° 58.179' W
Trail Creek Repeater	Stein Mountain	45° 27.545' N	113° 53.841' W
Trail Creek Repeater	Tepee Point	45° 55.995' N	113° 44.484' W
Trail Creek Repeater	Tie Creek	45° 42.540' N	113° 44.322' W
Trail Creek Safety Zone		45° 37.607' N	113° 53.141' W
Trail Creek Safety Zone		45° 33.011' N	113° 49.420' W
Trail Creek Safety Zone		45° 38.839' N	113° 53.999' W
Trail Creek Sling Site		45° 37.340' N	113° 52.099' W
Trail Creek Staging Area		45° 41.535' N	113° 56.854' W
Trail Creek Value at Risk		45° 32.861' N	113° 46.145' W
Trail Creek Value at Risk		45° 33.106' N	113° 48.314' W
Trail Creek Value at Risk		45° 32.964' N	113° 49.230' W
Trail Creek Value at Risk		45° 39.313' N	113° 48.950' W
Trail Creek Value at Risk		45° 38.841' N	113° 39.178' W
Trail Creek Value at Risk	Hogan's Cabin	45° 42.804' N	113° 52.831' W
Trail Creek Water Source		45° 36.253' N	113° 40.794' W
Trail Creek Drop Point	30	45° 37.404' N	113° 40.761' W
Trail Creek Drop Point	31	45° 37.404' N	113° 40.761' W
Trail Creek Drop Point	32	45° 36.323' N	113° 41.098' W

Branch II

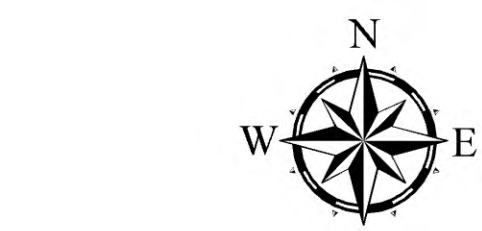
Branch I

Div F

Div W

Div C

Div G



Fire perimeter updated from Acres from IR on 7/23/2021 2300

Flight Restriction Information
Alder Creek - 1/2315- 12,500ft ceiling
Trail Creek - 1/2310 - 12,500ft ceiling



SA Blue Team
7/24/2021 0812
North American 1983 Datum, LatLong Grid