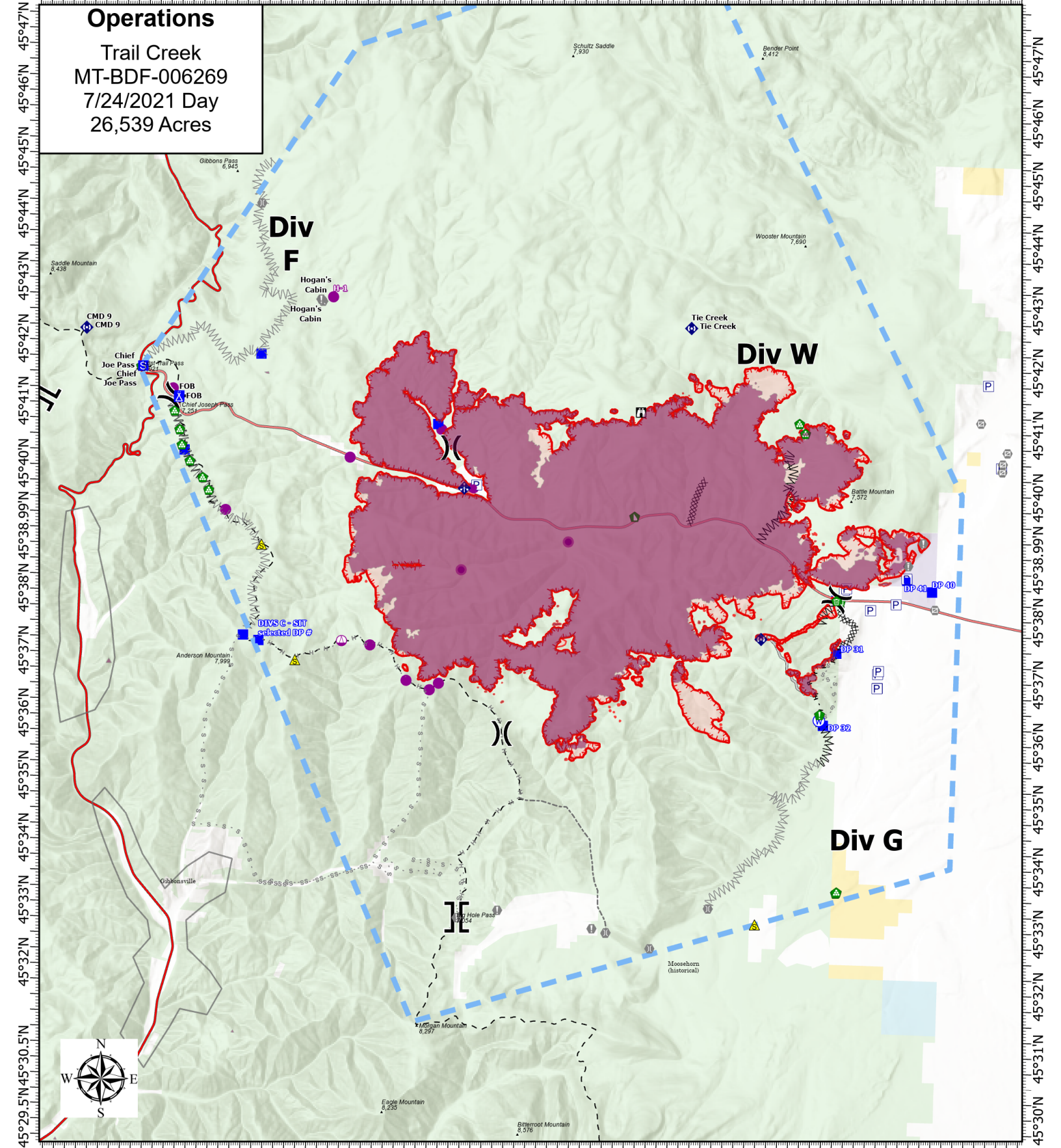


113°59.5'W 113°57.5'W 113°56'W 113°54'W 113°52'W 113°50'W 113°48'W 113°46'W 113°44'W 113°42'W 113°40'W 113°38'W



113°58.51'W 113°56.5'W 113°55'W 113°53.5'W 113°52'W 113°50.5'W 113°49'W 113°47.5'W 113°46'W 113°44.5'W 113°43'W 113°41.5'W 113°40'W 113°38.5'W 113°37'W

Operations
 Trail Creek
 MT-BDF-006269
 7/24/2021 Day
 26,539 Acres



Acres from IR on
 7/23/2021 2310

0 0.8 1.7 2.5
 Miles

1 inch equals 2.3 miles
 Scale: 1:146,250

- ⊗ Completed Dozer Line
- ⌋ Completed Fuel Break
- ⋯ Completed Hand Line
- - - Completed Road as Line
- ⌋ Planned Fuel Break
- ⋯ Planned Hand Line
- - - Planned Secondary Line
- Access or Improved Road
- - - Other
- Temporary Flight Restriction
- Fire Edge
- Other