

# Transportation

## Trail Creek

### MT-BDF-006272

#### 7/24/2021 Day

26,539 acres at 7/23/2021 2310



- |                                 |                               |
|---------------------------------|-------------------------------|
| Helispot                        | Dozer Push                    |
| Sling Site                      | Clean Up Area                 |
| Division Break                  | Mobile Weather Unit           |
| Branch Break                    | Repeater                      |
| Medical                         | Safety Zone                   |
| Drop Point                      | Water Source                  |
| Camp                            | Completed Dozer Line          |
| Staging Area                    | Completed Fuel Break          |
| Lookout                         | Completed Hand Line           |
| Value at Risk                   | Completed Road as Line        |
| Other                           | Access or Improved Road       |
| Gate                            | Other                         |
| Bridge                          | Fire Edge                     |
| Water Development or Draft Site | Other                         |
| Resource Location               | Wildfire Daily Fire Perimeter |
| Landing or Log Deck             | National Designated Trail     |
| Fence - Cut/Damaged             | US Primary Route              |
|                                 | State Primary Route           |

Point Type	Label	Latitude	Longitude
Camp	FOB	45° 41.152' N	113° 56.011' W
Camp	FOB	45° 41.176' N	113° 56.004' W
Clean Up Area		45° 38.249' N	113° 40.794' W
Clean Up Area	Chief Joe Pass	45° 41.631' N	113° 56.896' W
Dozer Push		45° 39.491' N	113° 45.481' W
Drop Point	30	45° 38.253' N	113° 40.794' W
Drop Point	31	45° 37.404' N	113° 40.761' W
Drop Point	32	45° 36.323' N	113° 41.098' W
Drop Point	40	45° 38.437' N	113° 38.614' W
Drop Point	41	45° 38.611' N	113° 39.192' W
Drop Point	50	45° 40.868' N	113° 50.051' W
Drop Point	51	45° 41.896' N	113° 54.158' W
Drop Point	52	45° 40.313' N	113° 55.840' W
Drop Point	53	45° 37.381' N	113° 54.350' W
Drop Point	54	45° 37.302' N	113° 53.993' W
Fence - Cut/Damaged		45° 38.225' N	113° 40.711' W
Gate		45° 40.518' N	113° 37.088' W
Gate		45° 40.701' N	113° 36.990' W
Gate		45° 38.152' N	113° 38.536' W
Gate		45° 40.395' N	113° 37.094' W

Point Type	Label	Latitude	Longitude
Gate		45° 41.164' N	113° 37.618' W
Helibase	Sula	45° 49.325' N	113° 57.557' W
Helispot	1	45° 42.848' N	113° 52.553' W
Helispot	10	45° 39.376' N	113° 54.851' W
Helispot	2	45° 40.783' N	113° 49.968' W
Helispot	3	45° 39.866' N	113° 49.191' W
Helispot	30	45° 36.712' N	113° 49.839' W
Helispot	31	45° 36.602' N	113° 50.044' W
Helispot	32	45° 36.740' N	113° 50.583' W
Helispot	4	45° 39.050' N	113° 46.981' W
Helispot	6	45° 38.544' N	113° 49.410' W
Helispot	7	45° 37.287' N	113° 51.437' W
Helispot	8	45° 40.286' N	113° 52.043' W
Helispot	9	45° 41.294' N	113° 56.150' W
Landing or Log Deck		45° 40.912' N	113° 41.632' W
Landing or Log Deck		45° 40.912' N	113° 41.632' W
Landing or Log Deck		45° 40.932' N	113° 56.099' W
Landing or Log Deck		45° 40.636' N	113° 55.967' W
Landing or Log Deck		45° 40.139' N	113° 55.709' W
Landing or Log Deck		45° 39.881' N	113° 55.403' W

Point Type	Label	Latitude	Longitude
Landing or Log Deck		45° 40.392' N	113° 55.904' W
Landing or Log Deck		45° 39.683' N	113° 55.253' W
Landing or Log Deck		45° 33.559' N	113° 40.597' W
Landing or Log Deck		45° 33.574' N	113° 40.579' W
Landing or Log Deck		45° 41.067' N	113° 41.774' W
Lookout		45° 41.165' N	113° 45.416' W
Mobile Weather Unit	IRAWS 47	45° 39.855' N	113° 49.404' W
Repeater	CMD 9	45° 42.215' N	113° 58.179' W
Repeater	Stein Mountain	45° 27.545' N	113° 52.841' W
Repeater	Teepee Point	45° 55.995' N	113° 44.484' W
Repeater	Tie Creek	45° 42.540' N	113° 44.322' W
Resource Location		45° 36.414' N	113° 41.098' W
Safety Zone		45° 37.007' N	113° 53.141' W
Safety Zone		45° 33.011' N	113° 42.425' W
Safety Zone		45° 38.839' N	113° 53.999' W
Sling Site		45° 37.340' N	113° 52.092' W
Staging Area		45° 41.635' N	113° 56.854' W
Value at Risk		45° 32.861' N	113° 46.145' W
Value at Risk		45° 33.106' N	113° 48.314' W
Value at Risk		45° 32.964' N	113° 49.236' W

# Div F

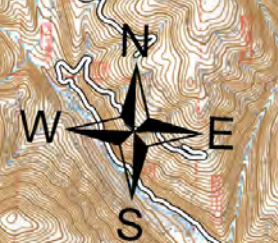
# Div W

# Div C

# Div G

# Branch I

# Branch II



SA Blue Situation Unit  
7/24/2021 0605  
North American 1983 Datum, Lat/Long Grid

