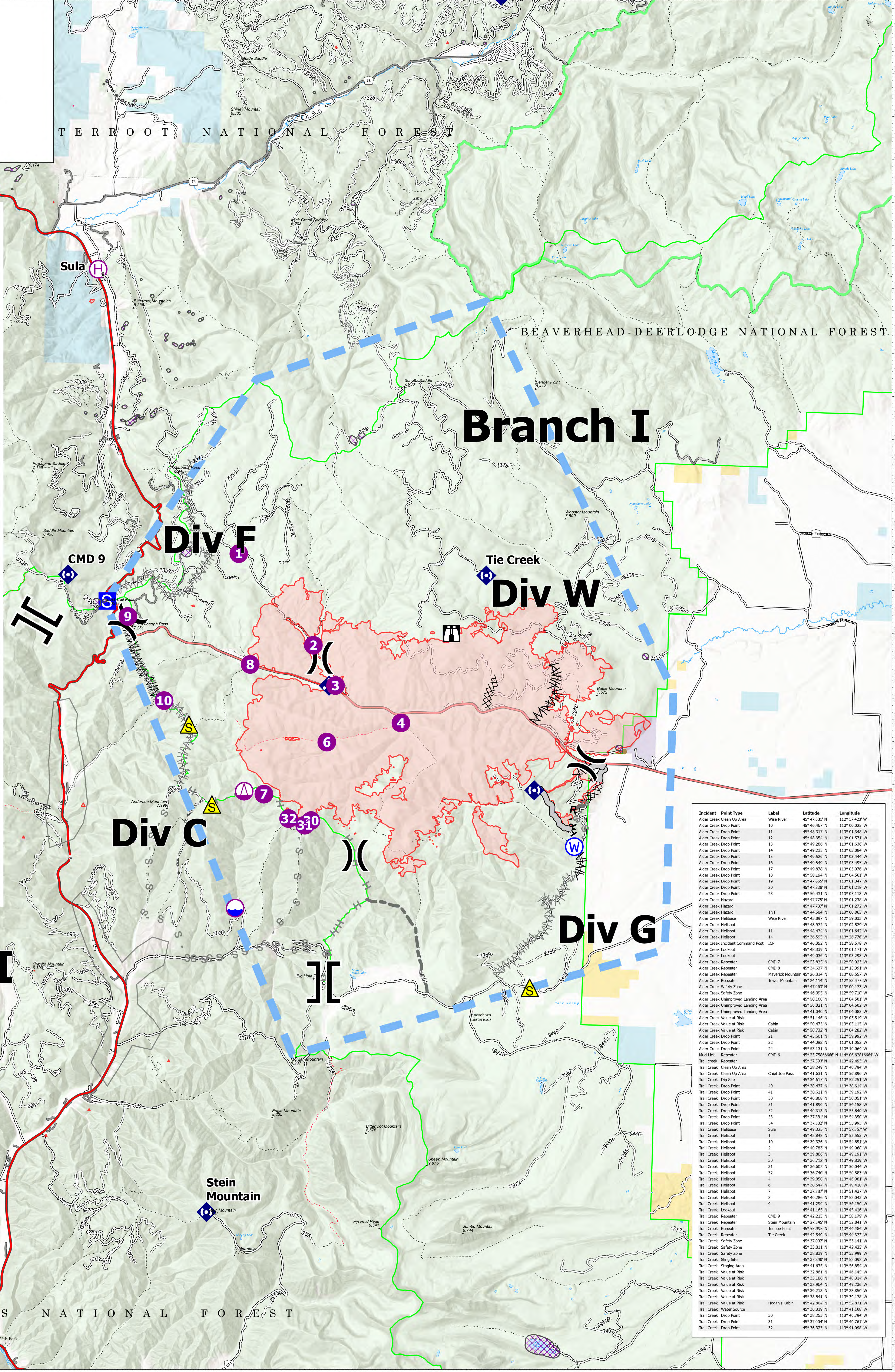


AirOps

Trail Creek
MT-BDF-006272
7/25/2021 Day
27,797 Acres

- Event Point
- Air Operations
 - Dip Site
 - Helispot
 - Helibase
 - Sling Site
- Assignment Breaks
 - Division Break
 - Branch Break
- Logistics
 - Staging Area
- Operations
 - Lookout
- Communications
 - Mobile Weather Unit
 - Repeater
- Safety
 - Safety Zone
- Water
 - Water Source
- Event Line
 - Completed Dozer Line
 - Completed Fuel Break
 - Completed Hand Line
 - Completed Road as Line
 - Planned Fuel Break
 - Planned Hand Line
 - Planned Secondary Line
- Reference
 - Access or Improved Road
 - Other
- Repair
 - Repair Line
- Air Ops
 - Temporary Flight Restriction
- Event Polygon
 - Other
 - Wildfire Daily Fire Perimeter
 - Paved
 - Gravel Road
 - Dirt Road
 - Unimproved Road
 - Forest Service Land
 - Aerial Fire Retardant Avoidance Areas: Terrestrial
 - State Public Lands



Incident	Point Type	Label	Latitude	Longitude
Alder Creek	Clean Up Area	Wise River	45° 47.581' N	113° 52.423' W
Alder Creek	Drop Point	10	45° 46.467' N	113° 00.025' W
Alder Creek	Drop Point	11	45° 48.317' N	113° 01.348' W
Alder Creek	Drop Point	12	45° 48.544' N	113° 01.573' W
Alder Creek	Drop Point	13	45° 49.286' N	113° 01.636' W
Alder Creek	Drop Point	14	45° 49.235' N	113° 03.084' W
Alder Creek	Drop Point	15	45° 49.520' N	113° 03.444' W
Alder Creek	Drop Point	16	45° 49.549' N	113° 03.450' W
Alder Creek	Drop Point	17	45° 49.878' N	113° 03.976' W
Alder Creek	Drop Point	18	45° 50.194' N	113° 04.561' W
Alder Creek	Drop Point	19	45° 47.865' N	113° 05.950' W
Alder Creek	Drop Point	20	45° 47.328' N	113° 01.218' W
Alder Creek	Drop Point	23	45° 50.431' N	113° 05.118' W
Alder Creek	Hazard	Alder Creek Hazard	45° 47.775' N	113° 01.238' W
Alder Creek	Hazard	Alder Creek Hazard	45° 47.537' N	113° 02.222' W
Alder Creek	Hazard	Alder Creek Hazard	45° 44.604' N	113° 00.865' W
Alder Creek	Helibase	Alder Creek Helibase	45° 45.897' N	113° 59.033' W
Alder Creek	Helispot	Alder Creek Helispot	45° 48.927' N	113° 02.529' W
Alder Creek	Helispot	Alder Creek Helispot	45° 48.474' N	113° 01.642' W
Alder Creek	Helispot	Alder Creek Helispot	45° 36.595' N	113° 26.776' W
Alder Creek	Incident Command Post	ICP	45° 46.352' N	113° 28.579' W
Alder Creek	Lookout	Alder Creek Lookout	45° 48.338' N	113° 01.173' W
Alder Creek	Lookout	Alder Creek Lookout	45° 49.036' N	113° 03.298' W
Alder Creek	Repeater	CMD 7	45° 53.835' N	113° 58.923' W
Alder Creek	Repeater	CMD 8	45° 34.833' N	113° 53.293' W
Alder Creek	Repeater	Maverick Mountain	45° 26.314' N	113° 08.353' W
Alder Creek	Safety Zone	Tower Mountain	45° 24.114' N	113° 53.477' W
Alder Creek	Safety Zone	Alder Creek Safety Zone	45° 47.463' N	113° 00.373' W
Alder Creek	Safety Zone	Alder Creek Safety Zone	45° 51.440' N	113° 02.710' W
Alder Creek	Unimproved Landing Area	Alder Creek Unimproved Landing Area	45° 50.160' N	113° 04.501' W
Alder Creek	Unimproved Landing Area	Alder Creek Unimproved Landing Area	45° 50.021' N	113° 04.602' W
Alder Creek	Unimproved Landing Area	Alder Creek Unimproved Landing Area	45° 41.040' N	113° 04.883' W
Alder Creek	Value at Risk	Alder Creek Value at Risk	45° 51.440' N	113° 02.710' W
Alder Creek	Value at Risk	Alder Creek Value at Risk	45° 50.473' N	113° 05.115' W
Alder Creek	Value at Risk	Alder Creek Value at Risk	45° 50.732' N	113° 04.282' W
Alder Creek	Drop Point	Alder Creek Drop Point	45° 45.501' N	113° 56.992' W
Alder Creek	Drop Point	Alder Creek Drop Point	45° 44.082' N	113° 01.052' W
Alder Creek	Drop Point	Alder Creek Drop Point	45° 53.131' N	113° 10.064' W
Alder Creek	Repeater	Mud Lick	45° 25.7806686' N	113° 06.62016668' W
Trail Creek	Repeater	Trail Creek Repeater	45° 37.911' N	113° 41.492' W
Trail Creek	Clean Up Area	Trail Creek Clean Up Area	45° 38.249' N	113° 40.794' W
Trail Creek	Clean Up Area	Trail Creek Clean Up Area	45° 41.631' N	113° 56.896' W
Trail Creek	Dip Site	Trail Creek Dip Site	45° 34.817' N	113° 52.253' W
Trail Creek	Drop Point	Trail Creek Drop Point	45° 38.437' N	113° 38.614' W
Trail Creek	Drop Point	Trail Creek Drop Point	45° 38.611' N	113° 39.192' W
Trail Creek	Drop Point	Trail Creek Drop Point	45° 40.868' N	113° 50.051' W
Trail Creek	Drop Point	Trail Creek Drop Point	45° 41.896' N	113° 54.158' W
Trail Creek	Drop Point	Trail Creek Drop Point	45° 40.313' N	113° 55.840' W
Trail Creek	Drop Point	Trail Creek Drop Point	45° 37.381' N	113° 54.359' W
Trail Creek	Drop Point	Trail Creek Drop Point	45° 37.302' N	113° 53.993' W
Trail Creek	Helibase	Trail Creek Helibase	45° 49.525' N	113° 53.557' W
Trail Creek	Helispot	Trail Creek Helispot	45° 42.848' N	113° 52.553' W
Trail Creek	Helispot	Trail Creek Helispot	45° 39.370' N	113° 54.853' W
Trail Creek	Helispot	Trail Creek Helispot	45° 40.287' N	113° 53.968' W
Trail Creek	Helispot	Trail Creek Helispot	45° 39.866' N	113° 49.191' W
Trail Creek	Helispot	Trail Creek Helispot	45° 36.712' N	113° 49.839' W
Trail Creek	Helispot	Trail Creek Helispot	45° 36.602' N	113° 50.044' W
Trail Creek	Helispot	Trail Creek Helispot	45° 36.540' N	113° 50.583' W
Trail Creek	Helispot	Trail Creek Helispot	45° 39.050' N	113° 46.981' W
Trail Creek	Helispot	Trail Creek Helispot	45° 38.544' N	113° 49.410' W
Trail Creek	Helispot	Trail Creek Helispot	45° 37.857' N	113° 51.457' W
Trail Creek	Helispot	Trail Creek Helispot	45° 40.286' N	113° 52.043' W
Trail Creek	Helispot	Trail Creek Helispot	45° 41.294' N	113° 56.150' W
Trail Creek	Lookout	Trail Creek Lookout	45° 41.165' N	113° 45.418' W
Trail Creek	Repeater	Trail Creek Repeater	45° 42.115' N	113° 45.179' W
Trail Creek	Repeater	Trail Creek Repeater	45° 25.545' N	113° 52.841' W
Trail Creek	Repeater	Trail Creek Repeater	45° 55.995' N	113° 44.484' W
Trail Creek	Repeater	Trail Creek Repeater	45° 42.540' N	113° 43.322' W
Trail Creek	Safety Zone	Trail Creek Safety Zone	45° 37.007' N	113° 53.141' W
Trail Creek	Safety Zone	Trail Creek Safety Zone	45° 33.011' N	113° 42.425' W
Trail Creek	Safety Zone	Trail Creek Safety Zone	45° 38.839' N	113° 53.999' W
Trail Creek	Sling Site	Trail Creek Sling Site	45° 37.940' N	113° 52.052' W
Trail Creek	Staging Area	Trail Creek Staging Area	45° 41.635' N	113° 56.854' W
Trail Creek	Value at Risk	Trail Creek Value at Risk	45° 32.861' N	113° 46.145' W
Trail Creek	Value at Risk	Trail Creek Value at Risk	45° 33.100' N	113° 46.314' W
Trail Creek	Value at Risk	Trail Creek Value at Risk	45° 32.964' N	113° 49.230' W
Trail Creek	Value at Risk	Trail Creek Value at Risk	45° 39.213' N	113° 38.850' W
Trail Creek	Value at Risk	Trail Creek Value at Risk	45° 38.841' N	113° 39.178' W
Trail Creek	Value at Risk	Trail Creek Value at Risk	45° 42.804' N	113° 53.833' W
Trail Creek	Water Source	Hogan's Cabin	45° 36.310' N	113° 41.108' W
Trail Creek	Drop Point	Trail Creek Drop Point	45° 38.253' N	113° 40.794' W
Trail Creek	Drop Point	Trail Creek Drop Point	45° 37.404' N	113° 40.763' W
Trail Creek	Drop Point	Trail Creek Drop Point	45° 36.323' N	113° 41.698' W

Branch II

Branch I

Div F

Div W

Div C

Div G



Fire perimeter updated from Acres from IR on 7/24/2021 2222

Flight Restriction Information
Alder Creek - 1/2315- 12,500ft ceiling
Trail Creek - 1/2310 - 12,500ft ceiling



SA Blue Team
7/25/2021 0618
North American 1983 Datum. LatLong Grid