

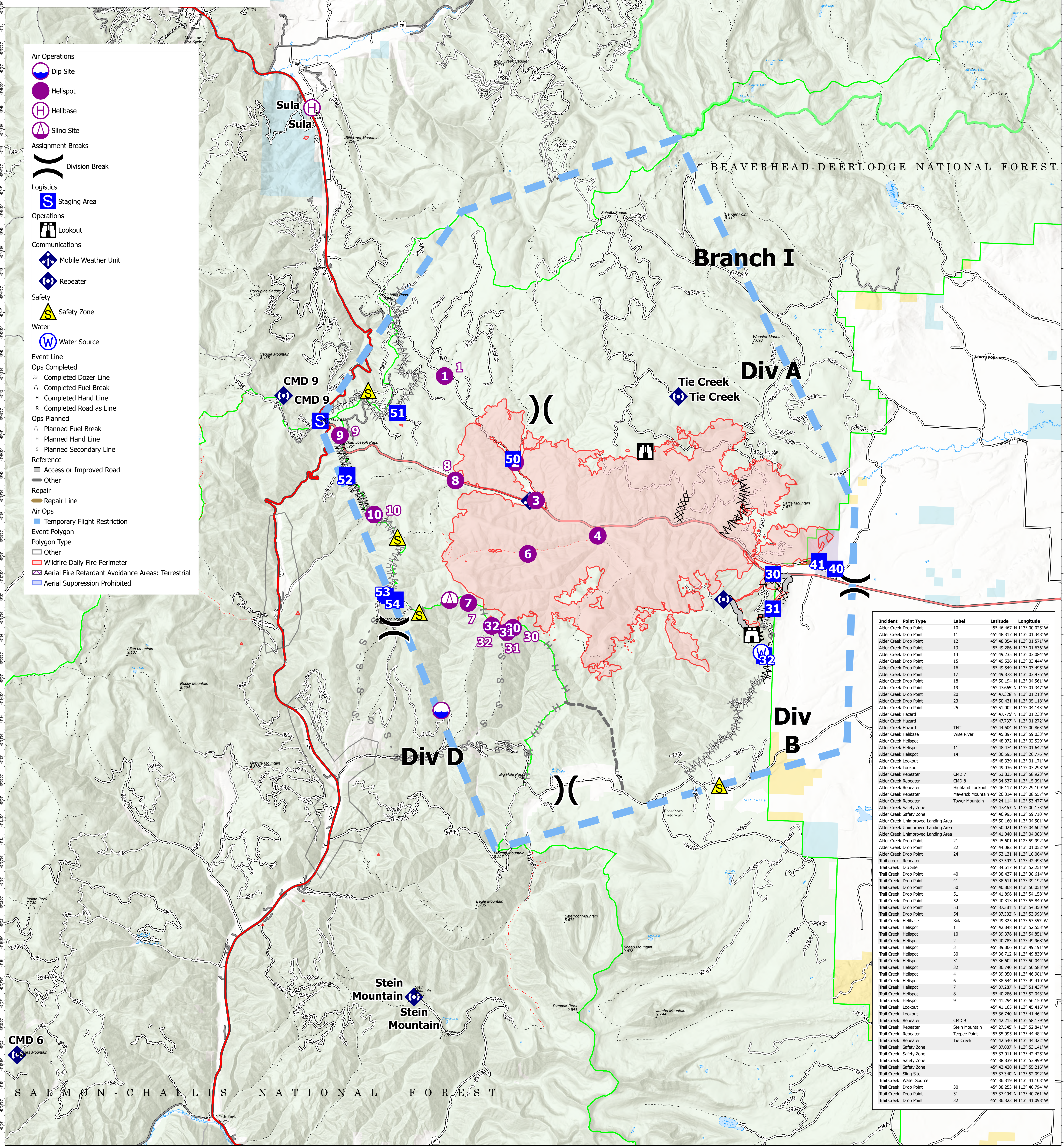
AirOps

Trail Creek
MTBDF-00629
7/26/2021
27,797 Acres

TERRA NATIONAL FOREST

BEAVERHEAD-DEERLodge NATIONAL FOREST

- Air Operations**
- Dip Site
- Helispot
- Helibase
- Sling Site
- Assignment Breaks**
- Division Break
- Logistics**
- Staging Area
- Operations**
- Lookout
- Communications**
- Mobile Weather Unit
- Repeater
- Safety**
- Safety Zone
- Water**
- Water Source
- Event Line**
- Ops Completed**
- Completed Dozer Line
- Completed Fuel Break
- Completed Hand Line
- Completed Road as Line
- Ops Planned**
- Planned Fuel Break
- Planned Hand Line
- Planned Secondary Line
- Reference**
- Access or Improved Road
- Other
- Repair**
- Repair Line
- Air Ops**
- Temporary Flight Restriction
- Event Polygon**
- Polygon Type**
- Other
- Wildfire Daily Fire Perimeter
- Aerial Fire Retardant Avoidance Areas: Terrestrial
- Aerial Suppression Prohibited



Incident Point Type	Label	Latitude	Longitude
Alder Creek Drop Point	10	45° 46.467' N 113° 02.025' W	
Alder Creek Drop Point	11	45° 48.317' N 113° 01.348' W	
Alder Creek Drop Point	12	45° 48.354' N 113° 01.571' W	
Alder Creek Drop Point	13	45° 49.286' N 113° 01.636' W	
Alder Creek Drop Point	14	45° 49.235' N 113° 03.084' W	
Alder Creek Drop Point	15	45° 49.526' N 113° 03.444' W	
Alder Creek Drop Point	16	45° 49.549' N 113° 03.495' W	
Alder Creek Drop Point	17	45° 49.878' N 113° 03.976' W	
Alder Creek Drop Point	18	45° 50.194' N 113° 04.561' W	
Alder Creek Drop Point	19	45° 47.665' N 113° 01.347' W	
Alder Creek Drop Point	20	45° 47.328' N 113° 01.228' W	
Alder Creek Drop Point	23	45° 50.311' N 113° 05.118' W	
Alder Creek Drop Point	25	45° 51.002' N 113° 04.143' W	
Alder Creek Hazard		45° 47.775' N 113° 01.238' W	
Alder Creek Hazard		45° 47.737' N 113° 01.272' W	
Alder Creek Hazard		45° 44.604' N 113° 00.863' W	
Alder Creek Helibase		45° 45.807' N 113° 00.023' W	
Alder Creek Helibase		45° 48.972' N 113° 02.529' W	
Alder Creek Helispot	11	45° 48.474' N 113° 01.642' W	
Alder Creek Helispot	14	45° 36.595' N 113° 26.776' W	
Alder Creek Helispot		45° 48.339' N 113° 01.171' W	
Alder Creek Lookout		45° 49.036' N 113° 03.298' W	
Alder Creek Repeater		45° 47.463' N 113° 00.173' W	
Alder Creek Repeater	CMD 8	45° 34.637' N 113° 15.391' W	
Alder Creek Repeater	Highland Lookout	45° 46.117' N 112° 29.109' W	
Alder Creek Repeater	Maverick Mountain	45° 26.314' N 113° 08.557' W	
Alder Creek Repeater	Tower Mountain	45° 24.114' N 112° 53.477' W	
Alder Creek Safety Zone		45° 47.463' N 113° 00.173' W	
Alder Creek Safety Zone		45° 46.995' N 113° 59.710' W	
Alder Creek Unimproved Landing Area		45° 50.160' N 113° 04.501' W	
Alder Creek Unimproved Landing Area		45° 50.021' N 113° 04.602' W	
Alder Creek Unimproved Landing Area		45° 41.040' N 113° 04.083' W	
Alder Creek Drop Point	21	45° 45.801' N 113° 59.992' W	
Alder Creek Drop Point	22	45° 44.082' N 113° 01.052' W	
Alder Creek Drop Point	24	45° 53.131' N 113° 10.064' W	
Trail Creek Repeater		45° 37.593' N 113° 42.493' W	
Trail Creek Dip Site		45° 34.617' N 113° 52.251' W	
Trail Creek Drop Point	40	45° 38.437' N 113° 36.614' W	
Trail Creek Drop Point	41	45° 38.511' N 113° 36.191' W	
Trail Creek Drop Point	50	45° 40.868' N 113° 50.051' W	
Trail Creek Drop Point	51	45° 41.896' N 113° 54.158' W	
Trail Creek Drop Point	52	45° 40.313' N 113° 55.840' W	
Trail Creek Drop Point	53	45° 37.381' N 113° 54.350' W	
Trail Creek Drop Point	54	45° 37.302' N 113° 53.993' W	
Trail Creek Helibase	Sula	45° 49.325' N 113° 52.553' W	
Trail Creek Helispot	1	45° 42.848' N 113° 52.553' W	
Trail Creek Helispot	10	45° 39.376' N 113° 49.968' W	
Trail Creek Helispot	2	45° 40.783' N 113° 49.968' W	
Trail Creek Helispot	3	45° 39.866' N 113° 49.191' W	
Trail Creek Helispot	30	45° 36.121' N 113° 49.829' W	
Trail Creek Helispot	31	45° 36.602' N 113° 50.044' W	
Trail Creek Helispot	32	45° 36.740' N 113° 50.583' W	
Trail Creek Helispot	4	45° 39.050' N 113° 46.981' W	
Trail Creek Helispot	6	45° 38.544' N 113° 49.410' W	
Trail Creek Helispot	7	45° 37.287' N 113° 51.437' W	
Trail Creek Helispot	8	45° 42.820' N 113° 52.216' W	
Trail Creek Helispot	9	45° 41.294' N 113° 56.150' W	
Trail Creek Lookout		45° 41.165' N 113° 45.416' W	
Trail Creek Lookout		45° 36.740' N 113° 41.464' W	
Trail Creek Repeater	CMD 9	45° 42.215' N 113° 58.179' W	
Trail Creek Repeater	Stein Mountain	45° 37.545' N 113° 50.841' W	
Trail Creek Repeater	Tespee Point	45° 55.995' N 113° 44.484' W	
Trail Creek Safety Zone		45° 42.540' N 113° 44.322' W	
Trail Creek Safety Zone		45° 37.007' N 113° 53.141' W	
Trail Creek Safety Zone		45° 33.011' N 113° 42.425' W	
Trail Creek Safety Zone		45° 38.839' N 113° 53.999' W	
Trail Creek Safety Zone		45° 42.820' N 113° 52.216' W	
Trail Creek Sling Site		45° 37.340' N 113° 52.092' W	
Trail Creek Water Source		45° 36.319' N 113° 41.108' W	
Trail Creek Drop Point	30	45° 38.253' N 113° 40.794' W	
Trail Creek Drop Point	31	45° 37.404' N 113° 40.761' W	
Trail Creek Drop Point	32	45° 36.323' N 113° 41.098' W	

Fire perimeter updated from Acres from IR on 07/24/21 22:22

Scale: 1:54,688

Flight Restriction Information
Alder Creek - 1/2315- 12,500ft ceiling
Trail Creek - 1/2310 - 12,500ft ceiling

SOUTHWEST AREA
INCIDENT MANAGEMENT TEAM

SW Team 1
7/25/2021 2051
North American 1983 Datum. LatLong Grid