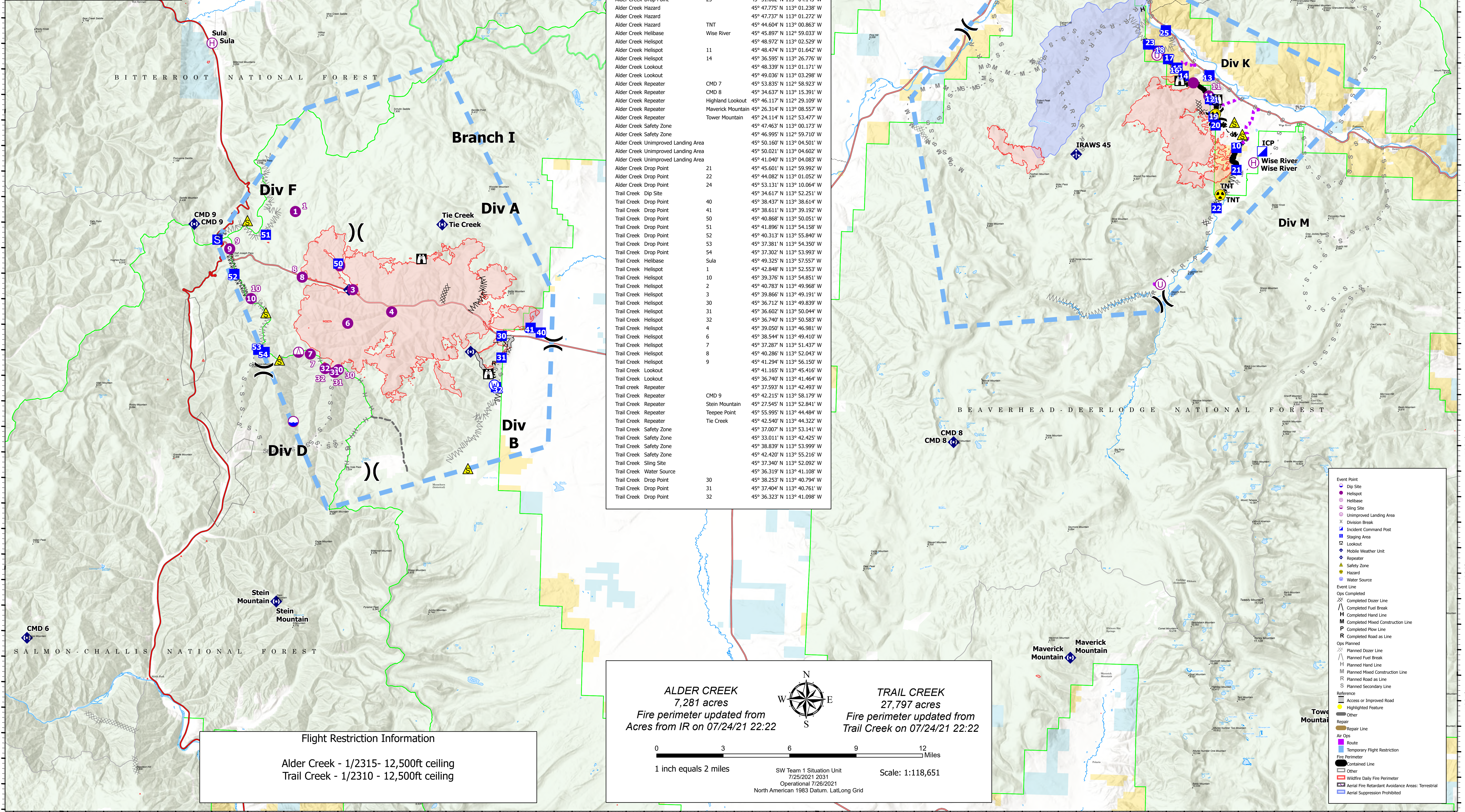


114°5'W 114°W 113°55'W 113°50'W 113°45'W 113°40'W 113°35'W 113°30'W 113°25'W 113°20'W 113°15'W 113°10'W 113°5'W 113°W 112°55'W 112°50'W

**AirOps**  
 Alder Creek Trail Creek  
 MTBD-F006269 MTBDF-006298

| Incident    | Point Type              | Label             | Latitude                     | Longitude |
|-------------|-------------------------|-------------------|------------------------------|-----------|
| Alder Creek | Drop Point              | 10                | 45° 46.467' N 113° 00.025' W |           |
| Alder Creek | Drop Point              | 11                | 45° 48.317' N 113° 01.348' W |           |
| Alder Creek | Drop Point              | 12                | 45° 48.354' N 113° 01.571' W |           |
| Alder Creek | Drop Point              | 13                | 45° 49.286' N 113° 01.636' W |           |
| Alder Creek | Drop Point              | 14                | 45° 49.235' N 113° 03.084' W |           |
| Alder Creek | Drop Point              | 15                | 45° 49.526' N 113° 03.444' W |           |
| Alder Creek | Drop Point              | 16                | 45° 49.549' N 113° 03.495' W |           |
| Alder Creek | Drop Point              | 17                | 45° 49.878' N 113° 03.976' W |           |
| Alder Creek | Drop Point              | 18                | 45° 50.194' N 113° 04.561' W |           |
| Alder Creek | Drop Point              | 19                | 45° 47.665' N 113° 01.347' W |           |
| Alder Creek | Drop Point              | 20                | 45° 47.328' N 113° 01.218' W |           |
| Alder Creek | Drop Point              | 23                | 45° 50.431' N 113° 05.118' W |           |
| Alder Creek | Drop Point              | 25                | 45° 51.002' N 113° 04.143' W |           |
| Alder Creek | Hazard                  |                   | 45° 47.775' N 113° 01.238' W |           |
| Alder Creek | Hazard                  |                   | 45° 47.737' N 113° 01.272' W |           |
| Alder Creek | Hazard                  |                   | 45° 44.604' N 113° 00.863' W |           |
| Alder Creek | Helibase                |                   | 45° 45.897' N 112° 59.033' W |           |
| Alder Creek | Helispot                |                   | 45° 48.972' N 113° 02.529' W |           |
| Alder Creek | Helispot                | 11                | 45° 48.474' N 113° 01.642' W |           |
| Alder Creek | Helispot                | 14                | 45° 36.595' N 113° 26.776' W |           |
| Alder Creek | Lookout                 |                   | 45° 48.339' N 113° 01.171' W |           |
| Alder Creek | Lookout                 |                   | 45° 49.036' N 113° 03.298' W |           |
| Alder Creek | Repeater                | CMD 7             | 45° 53.835' N 112° 58.923' W |           |
| Alder Creek | Repeater                | CMD 8             | 45° 34.637' N 113° 15.391' W |           |
| Alder Creek | Repeater                | Highland Lookout  | 45° 46.117' N 112° 29.109' W |           |
| Alder Creek | Repeater                | Maverick Mountain | 45° 26.314' N 113° 08.557' W |           |
| Alder Creek | Repeater                | Tower Mountain    | 45° 24.114' N 113° 53.477' W |           |
| Alder Creek | Safety Zone             |                   | 45° 47.463' N 113° 00.173' W |           |
| Alder Creek | Safety Zone             |                   | 45° 46.995' N 113° 59.710' W |           |
| Alder Creek | Unimproved Landing Area |                   | 45° 50.160' N 113° 04.501' W |           |
| Alder Creek | Unimproved Landing Area |                   | 45° 50.021' N 113° 04.602' W |           |
| Alder Creek | Unimproved Landing Area |                   | 45° 41.040' N 113° 04.083' W |           |
| Alder Creek | Drop Point              | 21                | 45° 45.601' N 113° 59.992' W |           |
| Alder Creek | Drop Point              | 22                | 45° 44.082' N 113° 01.052' W |           |
| Alder Creek | Drop Point              | 24                | 45° 53.131' N 113° 10.064' W |           |
| Trail Creek | Dip Site                |                   | 45° 34.617' N 113° 52.251' W |           |
| Trail Creek | Drop Point              | 40                | 45° 38.437' N 113° 38.614' W |           |
| Trail Creek | Drop Point              | 41                | 45° 38.611' N 113° 39.192' W |           |
| Trail Creek | Drop Point              | 50                | 45° 40.868' N 113° 50.051' W |           |
| Trail Creek | Drop Point              | 51                | 45° 41.896' N 113° 54.158' W |           |
| Trail Creek | Drop Point              | 52                | 45° 40.313' N 113° 55.840' W |           |
| Trail Creek | Drop Point              | 53                | 45° 37.381' N 113° 54.350' W |           |
| Trail Creek | Drop Point              | 54                | 45° 37.302' N 113° 53.993' W |           |
| Trail Creek | Helibase                |                   | 45° 49.325' N 113° 57.557' W |           |
| Trail Creek | Helispot                | 1                 | 45° 42.848' N 113° 52.553' W |           |
| Trail Creek | Helispot                | 10                | 45° 39.376' N 113° 54.851' W |           |
| Trail Creek | Helispot                | 2                 | 45° 40.783' N 113° 49.968' W |           |
| Trail Creek | Helispot                | 3                 | 45° 39.866' N 113° 49.191' W |           |
| Trail Creek | Helispot                | 30                | 45° 36.712' N 113° 49.839' W |           |
| Trail Creek | Helispot                | 31                | 45° 36.602' N 113° 50.044' W |           |
| Trail Creek | Helispot                | 32                | 45° 36.740' N 113° 50.583' W |           |
| Trail Creek | Helispot                | 4                 | 45° 39.050' N 113° 46.981' W |           |
| Trail Creek | Helispot                | 6                 | 45° 38.544' N 113° 49.410' W |           |
| Trail Creek | Helispot                | 7                 | 45° 37.287' N 113° 51.437' W |           |
| Trail Creek | Helispot                | 8                 | 45° 40.286' N 113° 52.043' W |           |
| Trail Creek | Helispot                | 9                 | 45° 41.294' N 113° 56.150' W |           |
| Trail Creek | Lookout                 |                   | 45° 41.165' N 113° 45.416' W |           |
| Trail Creek | Lookout                 |                   | 45° 36.740' N 113° 41.464' W |           |
| Trail Creek | Repeater                |                   | 45° 37.593' N 113° 42.493' W |           |
| Trail Creek | Repeater                | CMD 9             | 45° 42.215' N 113° 58.179' W |           |
| Trail Creek | Repeater                | Stein Mountain    | 45° 27.545' N 113° 52.841' W |           |
| Trail Creek | Repeater                | Teepee Point      | 45° 55.995' N 113° 44.484' W |           |
| Trail Creek | Repeater                | Tie Creek         | 45° 42.540' N 113° 44.322' W |           |
| Trail Creek | Safety Zone             |                   | 45° 37.007' N 113° 53.141' W |           |
| Trail Creek | Safety Zone             |                   | 45° 33.011' N 113° 42.425' W |           |
| Trail Creek | Safety Zone             |                   | 45° 38.839' N 113° 53.999' W |           |
| Trail Creek | Safety Zone             |                   | 45° 42.420' N 113° 55.216' W |           |
| Trail Creek | Sling Site              |                   | 45° 37.340' N 113° 52.092' W |           |
| Trail Creek | Water Source            |                   | 45° 36.319' N 113° 41.108' W |           |
| Trail Creek | Drop Point              | 30                | 45° 38.253' N 113° 40.794' W |           |
| Trail Creek | Drop Point              | 31                | 45° 37.404' N 113° 40.761' W |           |
| Trail Creek | Drop Point              | 32                | 45° 36.323' N 113° 41.098' W |           |



**Flight Restriction Information**  
 Alder Creek - 1/2315- 12,500ft ceiling  
 Trail Creek - 1/2310 - 12,500ft ceiling

**ALDER CREEK**  
 7,281 acres  
 Fire perimeter updated from IR on 07/24/21 22:22

**TRAIL CREEK**  
 27,797 acres  
 Fire perimeter updated from Trail Creek on 07/24/21 22:22

0 3 6 9 12 Miles  
 1 inch equals 2 miles

SW Team 1 Situation Unit  
 7/25/2021 2031  
 Operational 7/26/2021  
 North American 1983 Datum, Lat/Long Grid

Scale: 1:118,651

**Event Point**

- Dip Site
- Helispot
- Helibase
- Sling Site
- Unimproved Landing Area
- Division Break
- Incident Command Post
- Staging Area
- Lookout
- Mobile Weather Unit
- Repeater
- Safety Zone
- Hazard
- Water Source

**Event Line**

- Ops Completed
- Completed Dozer Line
- Completed Fuel Break
- Completed Hand Line
- Completed Mixed Construction Line
- Completed Flow Line
- Completed Road as Line
- Ops Planned
- Planned Dozer Line
- Planned Fuel Break
- Planned Hand Line
- Planned Mixed Construction Line
- Planned Road as Line
- Planned Secondary Line

**Reference**

- Access or Improved Road
- Highlighted Feature
- Other
- Repair
- Repair Line
- Air Ops
- Route
- Temporary Flight Restriction

**Fire Perimeter**

- Contained Line
- Other
- Wildfire Daily Fire Perimeter
- Aerial Fire Retardant Avoidance Areas: Terrestrial
- Aerial Suppression Prohibited

114°5'W 114°W 113°55'W 113°50'W 113°45'W 113°40'W 113°35'W 113°30'W 113°25'W 113°20'W 113°15'W 113°10'W 113°5'W 113°W 112°55'W 112°50'W