

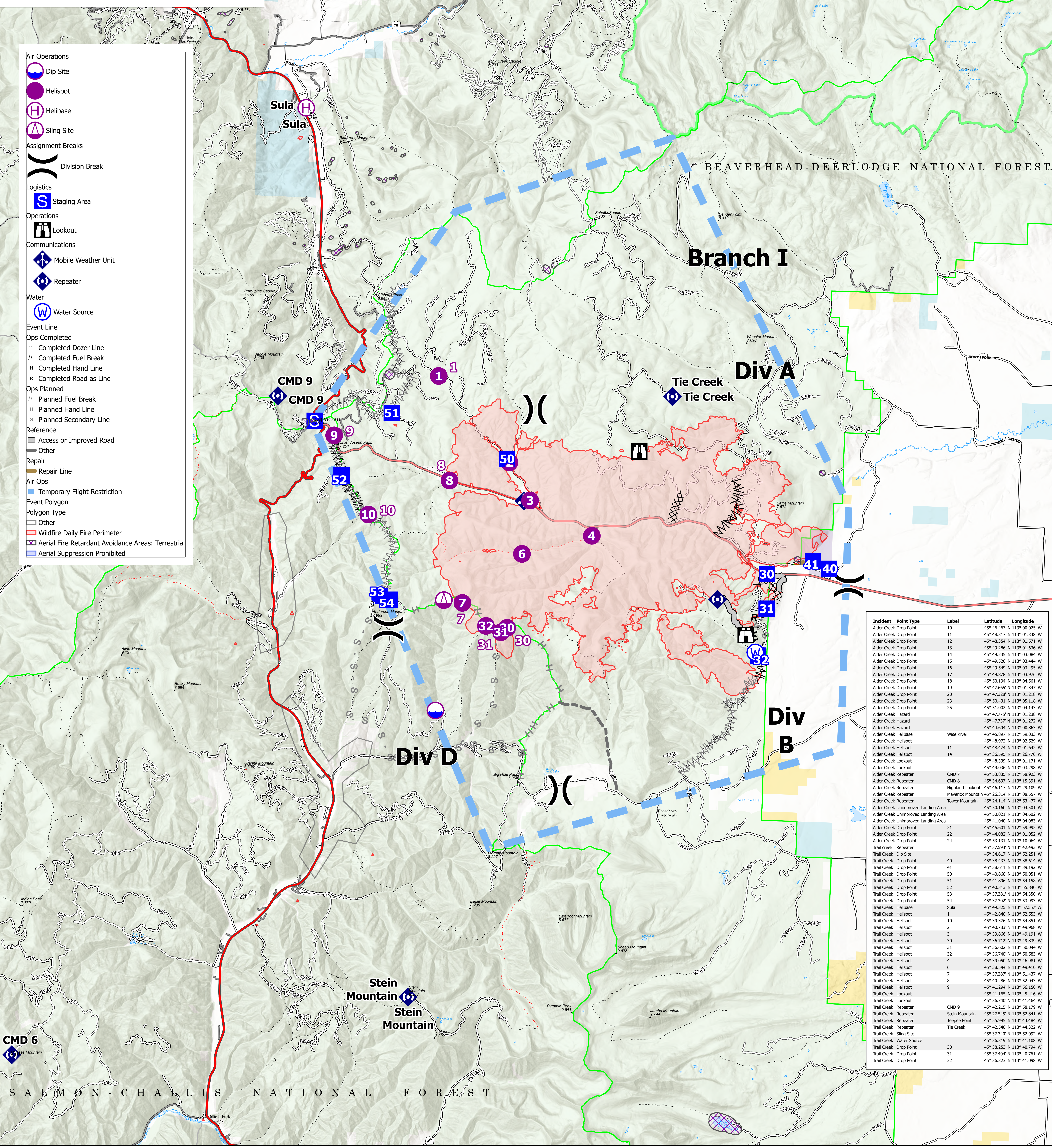
# AirOps

Trail Creek  
MTBDF-00629  
7/27/2021  
31,123 Acres

TERROOT NATIONAL FOREST

BEAVERHEAD-DEERLodge NATIONAL FOREST

- Air Operations**
- Dip Site
- Helispot
- Helibase
- Sling Site
- Assignment Breaks**
- Division Break
- Logistics**
- Staging Area
- Operations**
- Lookout
- Communications**
- Mobile Weather Unit
- Repeater
- Water**
- Water Source
- Event Line**
- Ops Completed**
- Completed Dozer Line
- Completed Fuel Break
- Completed Hand Line
- Completed Road as Line
- Ops Planned**
- Planned Fuel Break
- Planned Hand Line
- Planned Secondary Line
- Reference**
- Access or Improved Road
- Other
- Repair**
- Repair Line
- Air Ops**
- Temporary Flight Restriction
- Event Polygon**
- Polygon Type**
- Other
- Wildfire Daily Fire Perimeter
- Aerial Fire Retardant Avoidance Areas: Terrestrial
- Aerial Suppression Prohibited

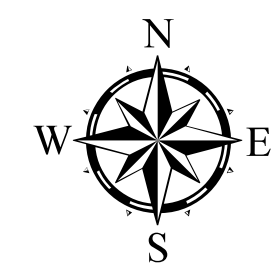


| Incident Point Type                 | Label            | Latitude                     | Longitude |
|-------------------------------------|------------------|------------------------------|-----------|
| Alder Creek Drop Point              | 10               | 45° 46.67' N 113° 02.025' W  |           |
| Alder Creek Drop Point              | 11               | 45° 48.317' N 113° 01.348' W |           |
| Alder Creek Drop Point              | 12               | 45° 48.354' N 113° 01.571' W |           |
| Alder Creek Drop Point              | 13               | 45° 49.286' N 113° 01.636' W |           |
| Alder Creek Drop Point              | 14               | 45° 49.235' N 113° 03.084' W |           |
| Alder Creek Drop Point              | 15               | 45° 49.526' N 113° 03.444' W |           |
| Alder Creek Drop Point              | 16               | 45° 49.549' N 113° 03.495' W |           |
| Alder Creek Drop Point              | 17               | 45° 49.878' N 113° 03.976' W |           |
| Alder Creek Drop Point              | 18               | 45° 50.194' N 113° 04.561' W |           |
| Alder Creek Drop Point              | 19               | 45° 47.665' N 113° 01.347' W |           |
| Alder Creek Drop Point              | 20               | 45° 47.328' N 113° 01.238' W |           |
| Alder Creek Drop Point              | 23               | 45° 50.311' N 113° 05.118' W |           |
| Alder Creek Drop Point              | 25               | 45° 51.002' N 113° 04.143' W |           |
| Alder Creek Hazard                  |                  | 45° 47.775' N 113° 01.238' W |           |
| Alder Creek Hazard                  |                  | 45° 47.737' N 113° 01.272' W |           |
| Alder Creek Hazard                  |                  | 45° 44.604' N 113° 00.863' W |           |
| Alder Creek Helibase                | Wise River       | 45° 45.807' N 113° 05.023' W |           |
| Alder Creek Helispot                |                  | 45° 48.972' N 113° 02.529' W |           |
| Alder Creek Helispot                | 11               | 45° 48.474' N 113° 01.642' W |           |
| Alder Creek Helispot                | 14               | 45° 36.595' N 113° 26.776' W |           |
| Alder Creek Lookout                 |                  | 45° 48.339' N 113° 01.171' W |           |
| Alder Creek Lookout                 |                  | 45° 49.036' N 113° 03.298' W |           |
| Alder Creek Repeater                |                  | 45° 48.923' N 113° 03.923' W |           |
| Alder Creek Repeater                | CMD 7            | 45° 34.637' N 113° 15.391' W |           |
| Alder Creek Repeater                | CMD 8            | 45° 46.117' N 112° 29.109' W |           |
| Alder Creek Repeater                | Highland Lookout | 45° 26.314' N 113° 08.557' W |           |
| Alder Creek Repeater                | Tower Mountain   | 45° 24.114' N 112° 53.477' W |           |
| Alder Creek Unimproved Landing Area |                  | 45° 50.160' N 113° 04.501' W |           |
| Alder Creek Unimproved Landing Area |                  | 45° 50.021' N 113° 04.603' W |           |
| Alder Creek Unimproved Landing Area |                  | 45° 41.040' N 113° 04.083' W |           |
| Alder Creek Drop Point              | 21               | 45° 45.601' N 112° 59.992' W |           |
| Alder Creek Drop Point              | 22               | 45° 44.082' N 113° 01.052' W |           |
| Alder Creek Drop Point              | 24               | 45° 53.131' N 113° 10.064' W |           |
| Trail Creek Repeater                |                  | 45° 37.927' N 113° 42.493' W |           |
| Trail Creek Dip Site                |                  | 45° 34.617' N 113° 52.251' W |           |
| Trail Creek Drop Point              | 40               | 45° 38.437' N 113° 38.614' W |           |
| Trail Creek Drop Point              | 41               | 45° 38.611' N 113° 39.192' W |           |
| Trail Creek Drop Point              | 40               | 45° 40.868' N 113° 50.051' W |           |
| Trail Creek Drop Point              | 51               | 45° 41.868' N 113° 54.159' W |           |
| Trail Creek Drop Point              | 50               | 45° 40.313' N 113° 55.840' W |           |
| Trail Creek Drop Point              | 52               | 45° 37.881' N 113° 54.350' W |           |
| Trail Creek Drop Point              | 53               | 45° 37.802' N 113° 53.993' W |           |
| Trail Creek Drop Point              | 54               | 45° 37.325' N 113° 53.993' W |           |
| Trail Creek Helibase                | Sula             | 45° 49.325' N 113° 57.557' W |           |
| Trail Creek Helispot                | 1                | 45° 42.848' N 113° 52.553' W |           |
| Trail Creek Helispot                | 10               | 45° 39.376' N 113° 54.851' W |           |
| Trail Creek Helispot                | 2                | 45° 40.783' N 113° 49.968' W |           |
| Trail Creek Helispot                | 3                | 45° 39.866' N 113° 49.191' W |           |
| Trail Creek Helispot                | 30               | 45° 36.712' N 113° 49.839' W |           |
| Trail Creek Helispot                | 31               | 45° 36.602' N 113° 50.044' W |           |
| Trail Creek Helispot                | 32               | 45° 36.740' N 113° 50.589' W |           |
| Trail Creek Helispot                | 4                | 45° 39.050' N 113° 46.981' W |           |
| Trail Creek Helispot                | 6                | 45° 38.544' N 113° 49.410' W |           |
| Trail Creek Helispot                | 7                | 45° 37.287' N 113° 51.437' W |           |
| Trail Creek Helispot                | 8                | 45° 40.286' N 113° 52.043' W |           |
| Trail Creek Helispot                | 9                | 45° 41.294' N 113° 56.150' W |           |
| Trail Creek Lookout                 |                  | 45° 41.659' N 113° 45.416' W |           |
| Trail Creek Lookout                 |                  | 45° 36.740' N 113° 41.464' W |           |
| Trail Creek Repeater                | CMD 9            | 45° 42.215' N 113° 58.179' W |           |
| Trail Creek Repeater                | Stein Mountain   | 45° 27.545' N 113° 52.841' W |           |
| Trail Creek Repeater                |                  | 45° 55.995' N 113° 44.484' W |           |
| Trail Creek Repeater                | Tie Creek        | 45° 42.940' N 113° 44.329' W |           |
| Trail Creek Sling Site              |                  | 45° 37.340' N 113° 52.092' W |           |
| Trail Creek Water Source            |                  | 45° 36.319' N 113° 41.108' W |           |
| Trail Creek Drop Point              | 30               | 45° 38.253' N 113° 40.794' W |           |
| Trail Creek Drop Point              | 31               | 45° 37.404' N 113° 40.761' W |           |
| Trail Creek Drop Point              | 32               | 45° 36.323' N 113° 41.098' W |           |

Flight Restriction Information  
Alder Creek - 1/2315- 12,500ft ceiling  
Trail Creek - 1/2310 - 12,500ft ceiling



SW Team 1  
7/26/2021 1939  
North American 1983 Datum, LatLong Grid



Fire perimeter updated from  
Acres from IR on 07/25/21 23:00

0 1 2 3 4 Miles  
Scale: 1:54,688