

AirOps

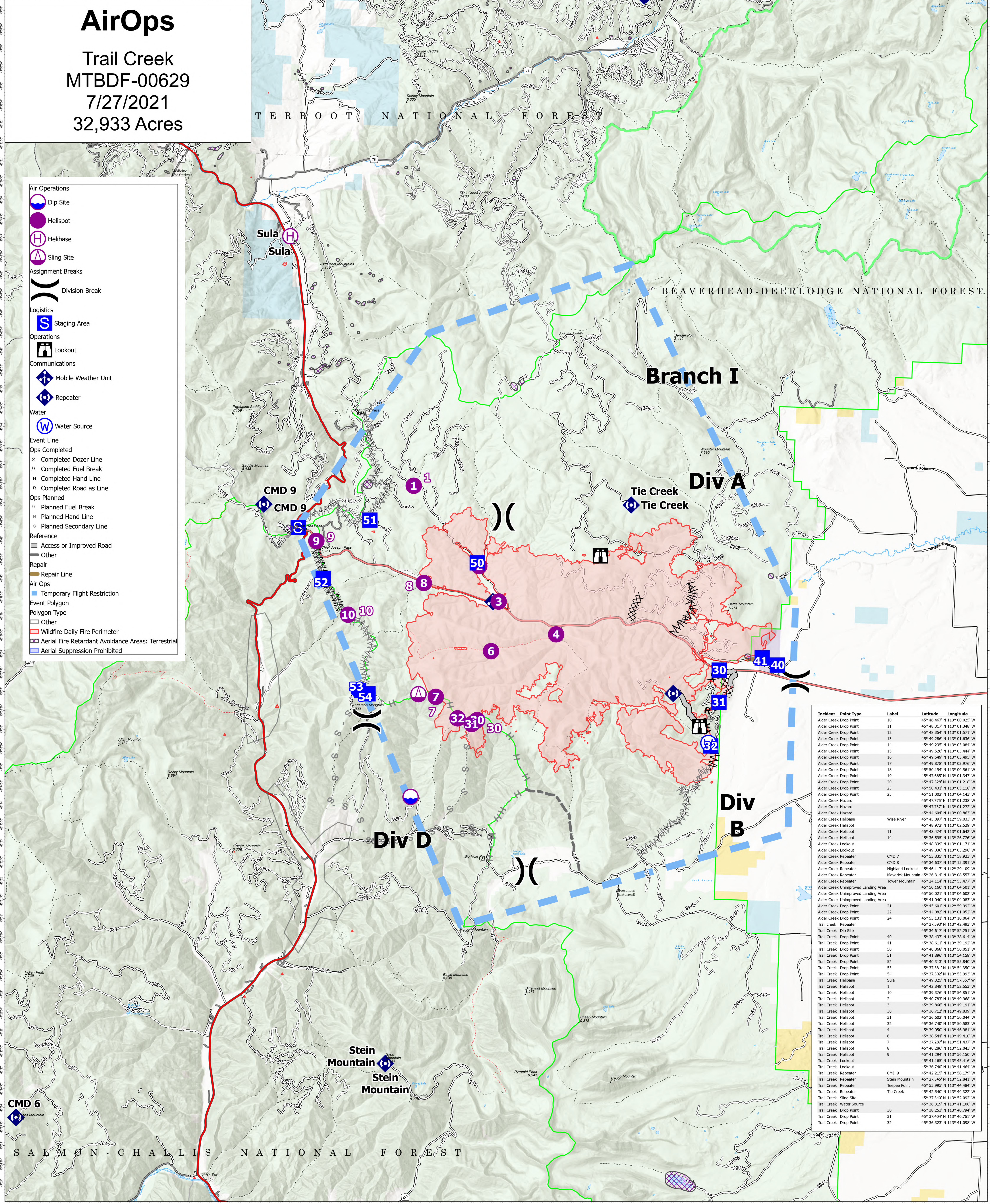
Trail Creek
MTBDF-00629
7/27/2021
32,933 Acres

TERROOT NATIONAL FOREST

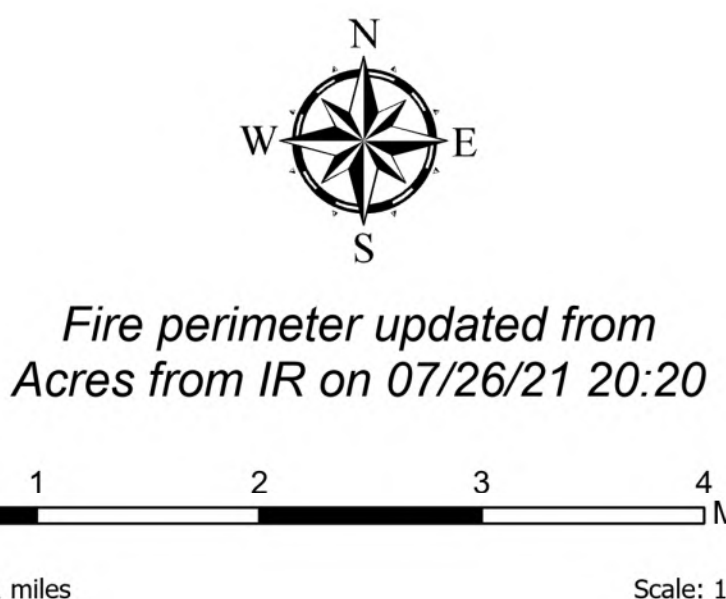
BEAVERHEAD-DEERLodge NATIONAL FOREST

SALMON-CHALLIS NATIONAL FOREST

- Air Operations**
- Dip Site
- Helispot
- Helibase
- Sling Site
- Assignment Breaks**
- Division Break
- Logistics**
- Staging Area
- Operations**
- Lookout
- Communications**
- Mobile Weather Unit
- Repeater
- Water**
- Water Source
- Event Line**
- Ops Completed**
- Completed Dozer Line
- Completed Fuel Break
- Completed Hand Line
- Completed Road as Line
- Ops Planned**
- Planned Fuel Break
- Planned Hand Line
- Planned Secondary Line
- Reference**
- Access or Improved Road
- Other
- Repair**
- Repair Line
- Air Ops**
- Temporary Flight Restriction
- Event Polygon**
- Polygon Type**
- Other
- Wildfire Daily Fire Perimeter
- Aerial Fire Retardant Avoidance Areas: Terrestrial
- Aerial Suppression Prohibited



Incident Point Type	Label	Latitude	Longitude
Alder Creek Drop Point	10	45° 46.867' N	113° 02.025' W
Alder Creek Drop Point	11	45° 48.317' N	113° 01.348' W
Alder Creek Drop Point	12	45° 48.354' N	113° 01.571' W
Alder Creek Drop Point	13	45° 49.286' N	113° 01.636' W
Alder Creek Drop Point	14	45° 49.235' N	113° 03.084' W
Alder Creek Drop Point	15	45° 49.526' N	113° 03.444' W
Alder Creek Drop Point	16	45° 49.549' N	113° 03.495' W
Alder Creek Drop Point	17	45° 49.878' N	113° 03.976' W
Alder Creek Drop Point	18	45° 50.194' N	113° 04.561' W
Alder Creek Drop Point	19	45° 47.665' N	113° 01.347' W
Alder Creek Drop Point	20	45° 47.328' N	113° 01.218' W
Alder Creek Drop Point	23	45° 50.311' N	113° 05.118' W
Alder Creek Drop Point	25	45° 51.002' N	113° 04.143' W
Alder Creek Hazard		45° 47.775' N	113° 01.238' W
Alder Creek Hazard		45° 47.737' N	113° 01.272' W
Alder Creek Hazard		45° 44.604' N	113° 00.863' W
Alder Creek Helibase		45° 45.807' N	113° 00.023' W
Alder Creek Helispot		45° 48.972' N	113° 02.529' W
Alder Creek Helispot	11	45° 48.474' N	113° 01.642' W
Alder Creek Helispot	14	45° 36.595' N	113° 26.776' W
Alder Creek Lookout		45° 48.339' N	113° 01.171' W
Alder Creek Lookout		45° 49.036' N	113° 03.298' W
Alder Creek Repeater		45° 49.325' N	113° 04.501' W
Alder Creek Repeater	CMD 7	45° 34.637' N	113° 15.391' W
Alder Creek Repeater	CMD 8	45° 46.117' N	112° 29.109' W
Alder Creek Repeater	Highland Lookout	45° 26.314' N	113° 08.557' W
Alder Creek Repeater	Tower Mountain	45° 24.114' N	112° 53.477' W
Alder Creek Unimproved Landing Area		45° 50.160' N	113° 04.501' W
Alder Creek Unimproved Landing Area		45° 50.021' N	113° 04.603' W
Alder Creek Unimproved Landing Area		45° 41.040' N	113° 04.083' W
Alder Creek Drop Point	21	45° 45.601' N	113° 59.992' W
Alder Creek Drop Point	22	45° 44.082' N	113° 01.052' W
Alder Creek Drop Point	24	45° 53.131' N	113° 10.064' W
Trail Creek Repeater		45° 37.897' N	113° 42.493' W
Trail Creek Dip Site		45° 34.617' N	113° 52.251' W
Trail Creek Drop Point	40	45° 38.437' N	113° 38.614' W
Trail Creek Drop Point	41	45° 38.611' N	113° 39.192' W
Trail Creek Drop Point	50	45° 40.868' N	113° 50.051' W
Trail Creek Drop Point	51	45° 41.866' N	113° 50.158' W
Trail Creek Drop Point	52	45° 40.313' N	113° 55.840' W
Trail Creek Drop Point	53	45° 37.381' N	113° 54.350' W
Trail Creek Drop Point	54	45° 37.302' N	113° 53.993' W
Trail Creek Helibase	Sula	45° 49.325' N	113° 57.557' W
Trail Creek Helispot	1	45° 42.848' N	113° 52.553' W
Trail Creek Helispot	10	45° 39.376' N	113° 54.851' W
Trail Creek Helispot	2	45° 40.783' N	113° 49.968' W
Trail Creek Helispot	3	45° 39.866' N	113° 49.191' W
Trail Creek Helispot	30	45° 36.712' N	113° 49.839' W
Trail Creek Helispot	31	45° 36.602' N	113° 50.044' W
Trail Creek Helispot	32	45° 36.740' N	113° 50.589' W
Trail Creek Helispot	4	45° 39.050' N	113° 46.981' W
Trail Creek Helispot	6	45° 38.544' N	113° 49.410' W
Trail Creek Helispot	7	45° 37.287' N	113° 51.437' W
Trail Creek Helispot	8	45° 40.286' N	113° 52.043' W
Trail Creek Helispot	9	45° 41.294' N	113° 56.150' W
Trail Creek Lookout		45° 41.655' N	113° 45.416' W
Trail Creek Lookout		45° 36.740' N	113° 41.464' W
Trail Creek Repeater	CMD 9	45° 42.215' N	113° 58.179' W
Trail Creek Repeater	Stein Mountain	45° 27.545' N	113° 52.841' W
Trail Creek Repeater		45° 55.995' N	113° 44.484' W
Trail Creek Repeater	Tie Creek	45° 42.540' N	113° 44.322' W
Trail Creek Sling Site		45° 37.407' N	113° 52.092' W
Trail Creek Water Source		45° 36.319' N	113° 41.108' W
Trail Creek Drop Point	30	45° 38.253' N	113° 40.794' W
Trail Creek Drop Point	31	45° 37.404' N	113° 40.761' W
Trail Creek Drop Point	32	45° 36.323' N	113° 41.098' W



Flight Restriction Information
Alder Creek - 1/2315- 12,500ft ceiling
Trail Creek - 1/2310 - 12,500ft ceiling