

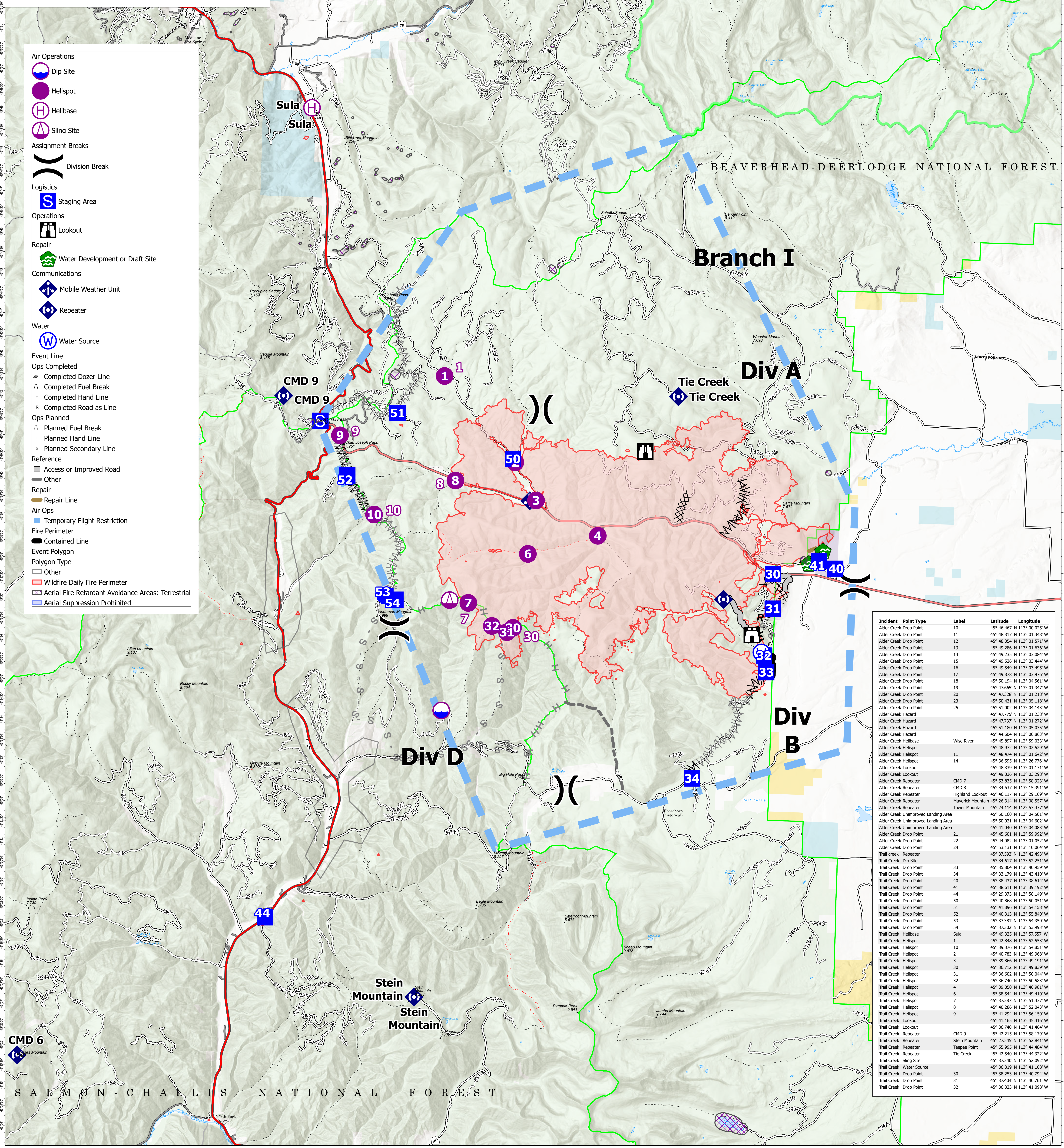
# AirOps

Trail Creek  
MTBDF-00629  
7/28/2021  
32,933 Acres

TERROOT NATIONAL FOREST

BEAVERHEAD-DEERLodge NATIONAL FOREST

- Air Operations**
- Dip Site
- Helispot
- Helibase
- Sling Site
- Assignment Breaks**
- Division Break
- Logistics**
- Staging Area
- Operations**
- Lookout
- Repair**
- Water Development or Draft Site
- Communications**
- Mobile Weather Unit
- Repeater
- Water**
- Water Source
- Event Line**
- Ops Completed**
- Completed Dozer Line
- Completed Fuel Break
- Completed Hand Line
- Completed Road as Line
- Ops Planned**
- Planned Fuel Break
- Planned Hand Line
- Planned Secondary Line
- Reference**
- Access or Improved Road
- Other
- Repair**
- Repair Line
- Air Ops**
- Temporary Flight Restriction
- Fire Perimeter**
- Contained Line
- Event Polygon**
- Polygon Type**
- Other
- Wildfire Daily Fire Perimeter
- Aerial Fire Retardant Avoidance Areas: Terrestrial
- Aerial Suppression Prohibited

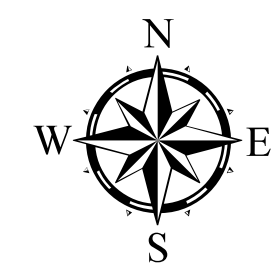


Incident Point Type	Label	Latitude	Longitude
Alder Creek Drop Point	10	45° 46.467' N	113° 02.025' W
Alder Creek Drop Point	11	45° 48.317' N	113° 01.348' W
Alder Creek Drop Point	12	45° 48.354' N	113° 01.571' W
Alder Creek Drop Point	13	45° 49.286' N	113° 01.636' W
Alder Creek Drop Point	14	45° 49.235' N	113° 03.084' W
Alder Creek Drop Point	15	45° 49.526' N	113° 03.444' W
Alder Creek Drop Point	16	45° 49.549' N	113° 03.495' W
Alder Creek Drop Point	17	45° 49.878' N	113° 03.976' W
Alder Creek Drop Point	18	45° 50.194' N	113° 04.561' W
Alder Creek Drop Point	19	45° 47.665' N	113° 01.347' W
Alder Creek Drop Point	20	45° 47.328' N	113° 01.238' W
Alder Creek Drop Point	23	45° 48.931' N	113° 05.118' W
Alder Creek Drop Point	25	45° 51.002' N	113° 04.143' W
Alder Creek Hazard		45° 47.775' N	113° 01.238' W
Alder Creek Hazard		45° 47.737' N	113° 01.272' W
Alder Creek Hazard		45° 51.180' N	113° 05.035' W
Alder Creek Hazard		45° 44.604' N	113° 00.365' W
Alder Creek Helibase	Wise River	45° 45.897' N	112° 59.033' W
Alder Creek Helispot		45° 48.972' N	113° 02.529' W
Alder Creek Helispot	11	45° 48.474' N	113° 01.642' W
Alder Creek Helispot	14	45° 36.995' N	113° 26.776' W
Alder Creek Lookout		45° 48.339' N	113° 01.174' W
Alder Creek Lookout		45° 49.206' N	113° 02.298' W
Alder Creek Repeater	CMD 7	45° 53.835' N	112° 58.923' W
Alder Creek Repeater	CMD 8	45° 34.637' N	113° 15.391' W
Alder Creek Repeater	Highland Lookout	45° 46.117' N	112° 29.109' W
Alder Creek Repeater	Maverick Mountain	45° 26.314' N	113° 08.557' W
Alder Creek Repeater	Tower Mountain	45° 24.148' N	113° 05.477' W
Alder Creek Unimproved Landing Area		45° 50.160' N	113° 04.501' W
Alder Creek Unimproved Landing Area		45° 50.021' N	113° 04.602' W
Alder Creek Unimproved Landing Area		45° 41.040' N	113° 04.083' W
Alder Creek Drop Point	21	45° 45.601' N	112° 59.992' W
Alder Creek Drop Point	22	45° 44.062' N	113° 01.052' W
Alder Creek Drop Point	24	45° 53.131' N	113° 10.056' W
Trail Creek Repeater		45° 37.593' N	113° 42.493' W
Trail Creek Dip Site		45° 34.617' N	113° 52.251' W
Trail Creek Drop Point	33	45° 35.804' N	113° 40.959' W
Trail Creek Drop Point	34	45° 33.179' N	113° 43.410' W
Trail Creek Drop Point	40	45° 38.437' N	113° 38.553' W
Trail Creek Drop Point	41	45° 38.611' N	113° 39.192' W
Trail Creek Drop Point	44	45° 29.373' N	113° 58.149' W
Trail Creek Drop Point	50	45° 40.868' N	113° 50.051' W
Trail Creek Drop Point	51	45° 41.896' N	113° 54.158' W
Trail Creek Drop Point	52	45° 40.313' N	113° 55.840' W
Trail Creek Drop Point	53	45° 37.361' N	113° 53.258' W
Trail Creek Drop Point	54	45° 37.302' N	113° 53.993' W
Trail Creek Helibase	Sula	45° 49.325' N	113° 57.557' W
Trail Creek Helispot	1	45° 42.848' N	113° 52.553' W
Trail Creek Helispot	10	45° 39.376' N	113° 54.851' W
Trail Creek Helispot	2	45° 40.763' N	113° 40.968' W
Trail Creek Helispot	3	45° 38.866' N	113° 49.191' W
Trail Creek Helispot	30	45° 36.712' N	113° 49.839' W
Trail Creek Helispot	31	45° 36.602' N	113° 50.044' W
Trail Creek Helispot	32	45° 36.740' N	113° 50.583' W
Trail Creek Helispot	4	45° 39.050' N	113° 46.981' W
Trail Creek Helispot	6	45° 38.944' N	113° 40.410' W
Trail Creek Helispot	7	45° 37.287' N	113° 51.437' W
Trail Creek Helispot	8	45° 40.286' N	113° 52.043' W
Trail Creek Helispot	9	45° 41.294' N	113° 56.150' W
Trail Creek Lookout		45° 41.165' N	113° 45.416' W
Trail Creek Lookout		45° 36.740' N	113° 41.466' W
Trail Creek Repeater		45° 42.215' N	113° 58.179' W
Trail Creek Repeater	CMD 9	45° 27.545' N	113° 52.841' W
Trail Creek Repeater	Stein Mountain	45° 55.995' N	113° 44.484' W
Trail Creek Repeater	Teepee Point	45° 42.540' N	113° 44.322' W
Trail Creek Sling Site		45° 37.340' N	113° 52.092' W
Trail Creek Water Source		45° 36.319' N	113° 41.108' W
Trail Creek Drop Point	30	45° 38.253' N	113° 40.794' W
Trail Creek Drop Point	31	45° 37.404' N	113° 40.761' W
Trail Creek Drop Point	32	45° 36.323' N	113° 41.098' W

Flight Restriction Information  
Alder Creek - 1/2315- 12,500ft ceiling  
Trail Creek - 1/2310 - 12,500ft ceiling



SW Team 1  
7/27/2021 2020  
North American 1983 Datum. LatLong Grid



Fire perimeter updated from  
Acres from IR on 07/26/21 20:20

0 1 2 3 4 Miles  
Scale: 1:54,688