

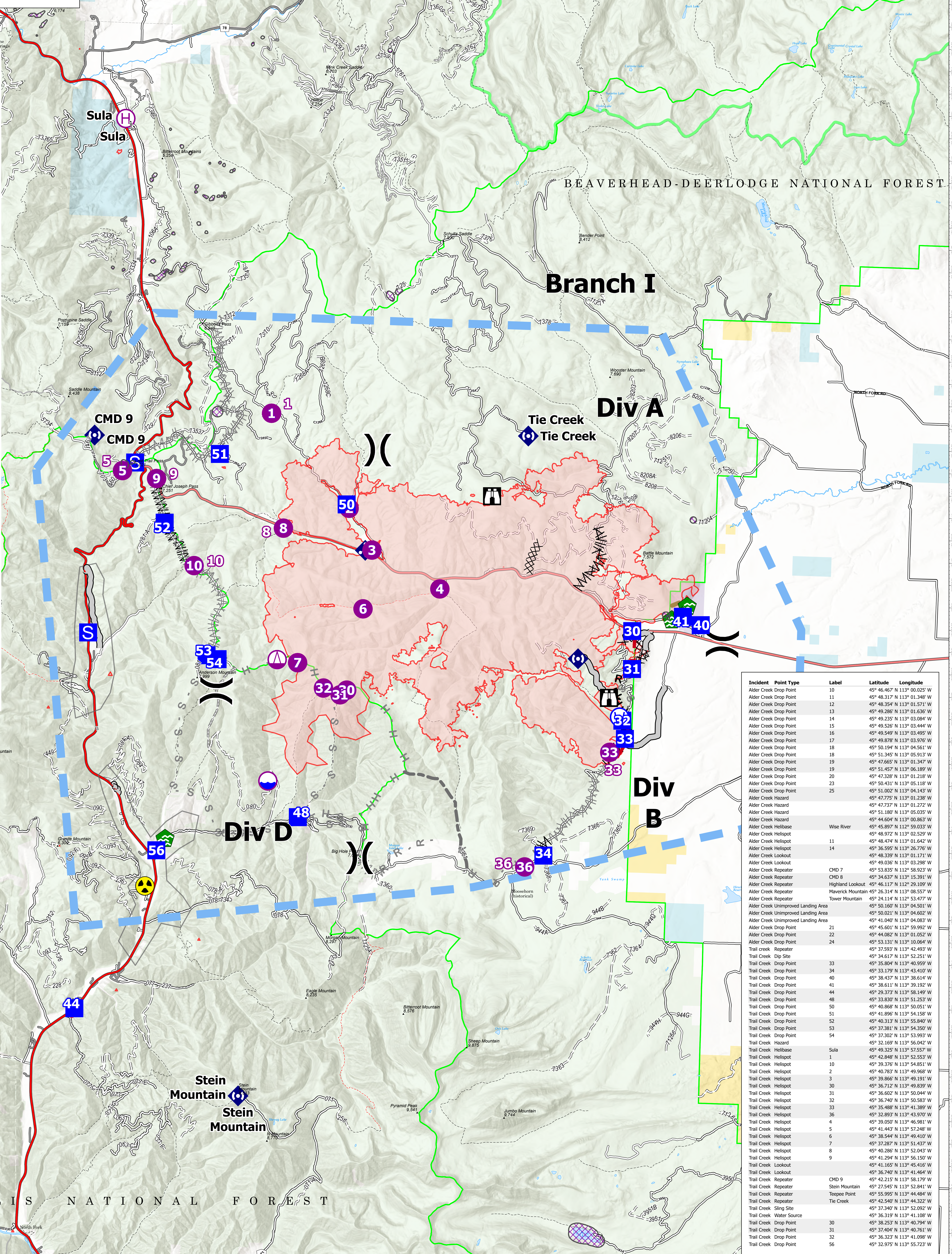
# AirOps

Trail Creek  
MTBDF-00629  
7/29/2021  
34,997 Acres

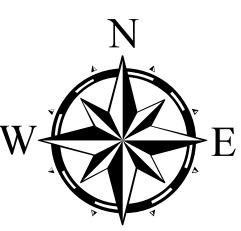
TERROOT NATIONAL FOREST

BEAVERHEAD-DEERLodge NATIONAL FOREST

- Air Operations**
  - Dip Site
  - Helispot
  - Helibase
  - Sling Site
- Assignment Breaks**
  - Division Break
- Logistics**
  - Staging Area
- Operations**
  - Lookout
- Repair**
  - Water Development or Draft Site
- Communications**
  - Mobile Weather Unit
  - Repeater
- Safety**
  - Hazard
- Water**
  - Water Source
- Event Line**
  - Ops Completed
    - Completed Dozer Line
    - Completed Fuel Break
    - Completed Hand Line
    - Completed Road as Line
  - Ops Planned
    - Planned Fuel Break
    - Planned Hand Line
    - Planned Road as Line
    - Planned Secondary Line
- Reference**
  - Access or Improved Road
  - Other
- Repair**
  - Repair Line
- Air Ops**
  - Temporary Flight Restriction
- Event Polygon**
  - Aerial Fire Retardant Avoidance Areas: Terrestrial
  - Aerial Suppression Prohibited



Incident	Point Type	Label	Latitude	Longitude
Alder Creek	Drop Point	10	45° 46.467' N 113° 00.025' W	
Alder Creek	Drop Point	11	45° 48.317' N 113° 01.348' W	
Alder Creek	Drop Point	12	45° 48.354' N 113° 01.571' W	
Alder Creek	Drop Point	13	45° 49.286' N 113° 01.636' W	
Alder Creek	Drop Point	14	45° 49.235' N 113° 03.084' W	
Alder Creek	Drop Point	15	45° 49.525' N 113° 03.444' W	
Alder Creek	Drop Point	16	45° 49.549' N 113° 03.495' W	
Alder Creek	Drop Point	17	45° 49.878' N 113° 03.976' W	
Alder Creek	Drop Point	18	45° 50.194' N 113° 04.561' W	
Alder Creek	Drop Point	18	45° 51.345' N 113° 05.913' W	
Alder Creek	Drop Point	19	45° 47.665' N 113° 01.347' W	
Alder Creek	Drop Point	19	45° 51.457' N 113° 06.189' W	
Alder Creek	Drop Point	20	45° 47.328' N 113° 01.218' W	
Alder Creek	Drop Point	23	45° 50.431' N 113° 05.118' W	
Alder Creek	Drop Point	25	45° 51.002' N 113° 04.143' W	
Alder Creek	Hazard		45° 47.775' N 113° 01.238' W	
Alder Creek	Hazard		45° 47.737' N 113° 01.272' W	
Alder Creek	Hazard		45° 51.180' N 113° 05.035' W	
Alder Creek	Hazard		45° 44.604' N 113° 00.863' W	
Alder Creek	Helibase	Wise River	45° 45.897' N 113° 09.033' W	
Alder Creek	Helispot		45° 45.972' N 113° 02.529' W	
Alder Creek	Helispot	11	45° 48.474' N 113° 01.642' W	
Alder Creek	Helispot	14	45° 36.595' N 113° 26.776' W	
Alder Creek	Lookout		45° 48.339' N 113° 01.171' W	
Alder Creek	Lookout		45° 49.036' N 113° 03.298' W	
Alder Creek	Repeater	CMD 7	45° 53.835' N 113° 58.923' W	
Alder Creek	Repeater	CMD 8	45° 34.637' N 113° 15.391' W	
Alder Creek	Repeater	Highland Lookout	45° 46.117' N 113° 29.109' W	
Alder Creek	Repeater	Maverick Mountain	45° 26.314' N 113° 08.557' W	
Alder Creek	Repeater	Tower Mountain	45° 24.114' N 113° 53.477' W	
Alder Creek	Unimproved Landing Area		45° 50.180' N 113° 04.501' W	
Alder Creek	Unimproved Landing Area		45° 50.021' N 113° 04.602' W	
Alder Creek	Unimproved Landing Area		45° 41.040' N 113° 04.083' W	
Alder Creek	Drop Point	21	45° 45.601' N 113° 59.992' W	
Alder Creek	Drop Point	22	45° 44.082' N 113° 01.052' W	
Alder Creek	Drop Point	24	45° 53.131' N 113° 10.064' W	
Trail Creek	Drop Point	41	45° 36.611' N 113° 39.192' W	
Trail Creek	Dip Site		45° 34.617' N 113° 52.251' W	
Trail Creek	Drop Point	33	45° 35.804' N 113° 40.959' W	
Trail Creek	Drop Point	34	45° 33.179' N 113° 43.410' W	
Trail Creek	Drop Point	40	45° 38.437' N 113° 38.614' W	
Trail Creek	Drop Point	41	45° 36.611' N 113° 39.192' W	
Trail Creek	Drop Point	44	45° 29.373' N 113° 58.149' W	
Trail Creek	Drop Point	48	45° 33.830' N 113° 51.253' W	
Trail Creek	Drop Point	50	45° 40.868' N 113° 50.051' W	
Trail Creek	Drop Point	51	45° 41.896' N 113° 54.158' W	
Trail Creek	Drop Point	52	45° 40.313' N 113° 55.840' W	
Trail Creek	Drop Point	53	45° 37.381' N 113° 54.350' W	
Trail Creek	Drop Point	54	45° 37.302' N 113° 53.993' W	
Trail Creek	Hazard		45° 32.169' N 113° 56.042' W	
Trail Creek	Helibase	Sula	45° 49.325' N 113° 57.557' W	
Trail Creek	Helispot	1	45° 42.846' N 113° 52.553' W	
Trail Creek	Helispot	10	45° 39.376' N 113° 54.851' W	
Trail Creek	Helispot	2	45° 40.783' N 113° 49.968' W	
Trail Creek	Helispot	3	45° 39.866' N 113° 49.191' W	
Trail Creek	Helispot	30	45° 36.712' N 113° 49.839' W	
Trail Creek	Helispot	31	45° 36.602' N 113° 50.044' W	
Trail Creek	Helispot	32	45° 36.740' N 113° 50.583' W	
Trail Creek	Helispot	33	45° 35.488' N 113° 41.389' W	
Trail Creek	Helispot	36	45° 32.893' N 113° 43.970' W	
Trail Creek	Helispot	4	45° 39.050' N 113° 46.981' W	
Trail Creek	Helispot	5	45° 41.443' N 113° 57.248' W	
Trail Creek	Helispot	6	45° 38.544' N 113° 49.410' W	
Trail Creek	Helispot	7	45° 37.287' N 113° 51.437' W	
Trail Creek	Helispot	8	45° 40.286' N 113° 52.043' W	
Trail Creek	Helispot	9	45° 41.294' N 113° 56.150' W	
Trail Creek	Lookout		45° 41.155' N 113° 45.416' W	
Trail Creek	Lookout		45° 36.740' N 113° 41.464' W	
Trail Creek	Repeater	CMD 9	45° 42.215' N 113° 58.179' W	
Trail Creek	Repeater	Stein Mountain	45° 27.545' N 113° 52.841' W	
Trail Creek	Repeater	Tepee Point	45° 55.995' N 113° 44.484' W	
Trail Creek	Repeater	Tie Creek	45° 42.540' N 113° 44.322' W	
Trail Creek	Sling Site		45° 37.240' N 113° 52.093' W	
Trail Creek	Water Source		45° 36.319' N 113° 41.108' W	
Trail Creek	Drop Point	30	45° 38.253' N 113° 40.794' W	
Trail Creek	Drop Point	31	45° 37.404' N 113° 40.761' W	
Trail Creek	Drop Point	32	45° 36.323' N 113° 41.098' W	
Trail Creek	Drop Point	56	45° 32.975' N 113° 55.723' W	



Fire perimeter updated from  
Acres Hand Drawn on 07/28/21 16:30

### Flight Restriction Information

Alder Creek - 1/2315- 12,500ft ceiling  
Trail Creek - 1/2310 - 12,500ft ceiling



SW Team 1  
7/28/2021 2047  
North American 1983 Datum. LatLong Grid