

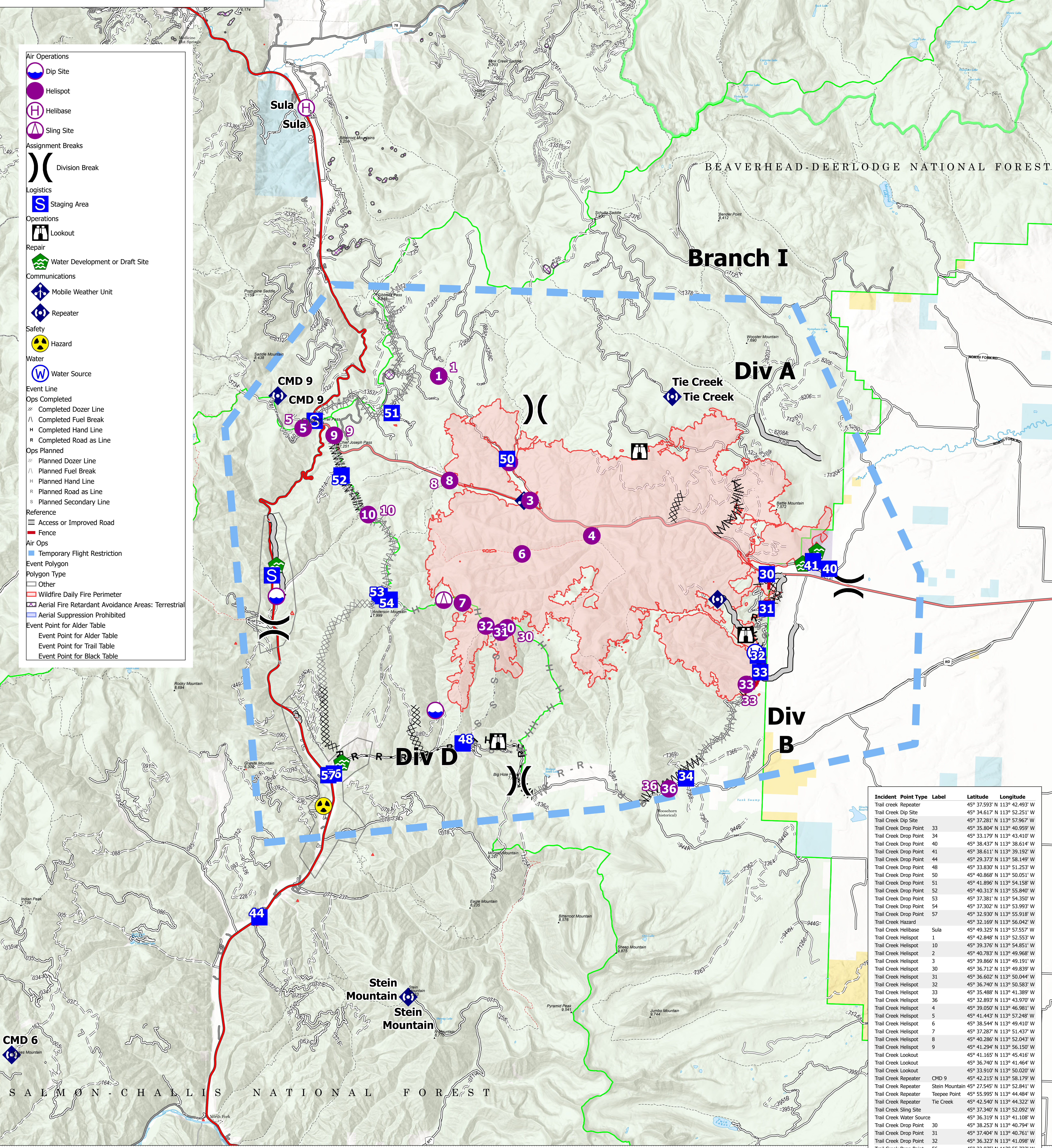
AirOps

Trail Creek
MTBDF-00629
8/1/2021
35,111 Acres

TERROOT NATIONAL FOREST

BEAVERHEAD-DEERLodge NATIONAL FOREST

- Air Operations**
- Dip Site
- Helispot
- Helibase
- Sling Site
- Assignment Breaks**
- Division Break
- Logistics**
- Staging Area
- Operations**
- Lookout
- Repair**
- Water Development or Draft Site
- Communications**
- Mobile Weather Unit
- Repeater
- Safety**
- Hazard
- Water**
- Water Source
- Event Line**
- Ops Completed**
- Completed Dozer Line
- Completed Fuel Break
- Completed Hand Line
- Completed Road as Line
- Ops Planned**
- Planned Dozer Line
- Planned Fuel Break
- Planned Hand Line
- Planned Road as Line
- Planned Secondary Line
- Reference**
- Access or Improved Road
- Fence
- Air Ops**
- Temporary Flight Restriction
- Event Polygon**
- Polygon Type**
- Wildfire Daily Fire Perimeter
- Aerial Fire Retardant Avoidance Areas: Terrestrial
- Aerial Suppression Prohibited
- Event Point for Alder Table**
- Event Point for Trail Table**
- Event Point for Black Table**

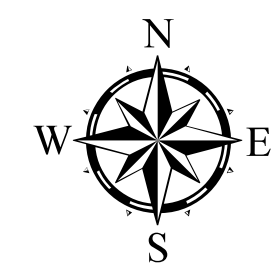


| Incident | Point Type | Label | Latitude | Longitude |
|-------------|--------------|----------------|------------------------------|-----------|
| Trail Creek | Repeater | | 45° 37.593' N 113° 42.493' W | |
| Trail Creek | Dip Site | | 45° 34.617' N 113° 52.251' W | |
| Trail Creek | Drop Point | 33 | 45° 35.804' N 113° 40.959' W | |
| Trail Creek | Drop Point | 34 | 45° 33.179' N 113° 43.410' W | |
| Trail Creek | Drop Point | 40 | 45° 38.437' N 113° 38.614' W | |
| Trail Creek | Drop Point | 41 | 45° 38.611' N 113° 39.192' W | |
| Trail Creek | Drop Point | 44 | 45° 29.373' N 113° 58.149' W | |
| Trail Creek | Drop Point | 48 | 45° 33.830' N 113° 51.253' W | |
| Trail Creek | Drop Point | 50 | 45° 40.868' N 113° 50.051' W | |
| Trail Creek | Drop Point | 51 | 45° 41.896' N 113° 54.158' W | |
| Trail Creek | Drop Point | 52 | 45° 40.313' N 113° 55.840' W | |
| Trail Creek | Drop Point | 53 | 45° 37.381' N 113° 54.350' W | |
| Trail Creek | Drop Point | 54 | 45° 37.302' N 113° 53.993' W | |
| Trail Creek | Drop Point | 57 | 45° 32.930' N 113° 55.918' W | |
| Trail Creek | Hazard | | 45° 32.169' N 113° 56.042' W | |
| Trail Creek | Helibase | Sula | 45° 49.325' N 113° 57.557' W | |
| Trail Creek | Helispot | 1 | 45° 42.848' N 113° 52.553' W | |
| Trail Creek | Helispot | 2 | 45° 39.376' N 113° 54.851' W | |
| Trail Creek | Helispot | 3 | 45° 40.783' N 113° 49.968' W | |
| Trail Creek | Helispot | 30 | 45° 39.866' N 113° 49.191' W | |
| Trail Creek | Helispot | 31 | 45° 36.712' N 113° 49.839' W | |
| Trail Creek | Helispot | 32 | 45° 36.602' N 113° 50.044' W | |
| Trail Creek | Helispot | 33 | 45° 36.740' N 113° 50.583' W | |
| Trail Creek | Helispot | 36 | 45° 35.488' N 113° 41.389' W | |
| Trail Creek | Helispot | 4 | 45° 32.893' N 113° 43.970' W | |
| Trail Creek | Helispot | 5 | 45° 39.050' N 113° 46.981' W | |
| Trail Creek | Helispot | 6 | 45° 41.443' N 113° 57.248' W | |
| Trail Creek | Helispot | 7 | 45° 38.544' N 113° 49.410' W | |
| Trail Creek | Helispot | 8 | 45° 37.287' N 113° 51.437' W | |
| Trail Creek | Helispot | 9 | 45° 40.286' N 113° 52.043' W | |
| Trail Creek | Helispot | 10 | 45° 41.294' N 113° 56.150' W | |
| Trail Creek | Lookout | | 45° 41.165' N 113° 45.416' W | |
| Trail Creek | Lookout | | 45° 36.740' N 113° 41.464' W | |
| Trail Creek | Lookout | | 45° 33.910' N 113° 50.020' W | |
| Trail Creek | Repeater | | 45° 42.215' N 113° 58.179' W | |
| CMD 9 | Repeater | Stein Mountain | 45° 27.545' N 113° 52.841' W | |
| Trail Creek | Repeater | Teepee Point | 45° 55.995' N 113° 44.484' W | |
| Trail Creek | Repeater | Tie Creek | 45° 42.540' N 113° 44.322' W | |
| Trail Creek | Sling Site | | 45° 37.340' N 113° 52.092' W | |
| Trail Creek | Water Source | | 45° 36.319' N 113° 41.108' W | |
| Trail Creek | Drop Point | 30 | 45° 38.253' N 113° 40.794' W | |
| Trail Creek | Drop Point | 31 | 45° 37.404' N 113° 40.761' W | |
| Trail Creek | Drop Point | 32 | 45° 36.323' N 113° 41.098' W | |
| Trail Creek | Drop Point | 56 | 45° 32.975' N 113° 55.723' W | |

Flight Restriction Information
 Alder Creek - 1/7629- 12,500ft ceiling
 Trail Creek - 1/7630 - 11,500ft ceiling
 Black Mountain - 1/1730 - 10,500ft ceiling



SW Team 1
7/31/2021 1921
North American 1983 Datum. LatLong Grid



Fire perimeter updated from Acres from IR on 07/31/21 00:22

Scale: 1:54,688
1 inch equals 1 mile