

AirOps

Trail Creek
MTBDF-00629
8/3/2021
35,111 Acres

TERROOT NATIONAL FOREST

BEAVERHEAD-DEERLodge NATIONAL FOREST

Air Operations

- Dip Site
- Helispot
- Helibase
- Sling Site

Assignment Breaks

- Division Break

Logistics

- Staging Area

Operations

- Lookout

Repair

- Water Development or Draft Site

Communications

- Mobile Weather Unit
- Repeater

Safety

- Hazard

Water

- Water Source

Event Line

Ops Completed

- Completed Dozer Line
- Completed Fuel Break
- Completed Hand Line
- Completed Road as Line

Ops Planned

- Planned Dozer Line
- Planned Fuel Break
- Planned Hand Line
- Planned Road as Line
- Planned Secondary Line

Reference

- Access or Improved Road
- Fence
- Repair Line

Air Ops

- Temporary Flight Restriction

Fire Perimeter

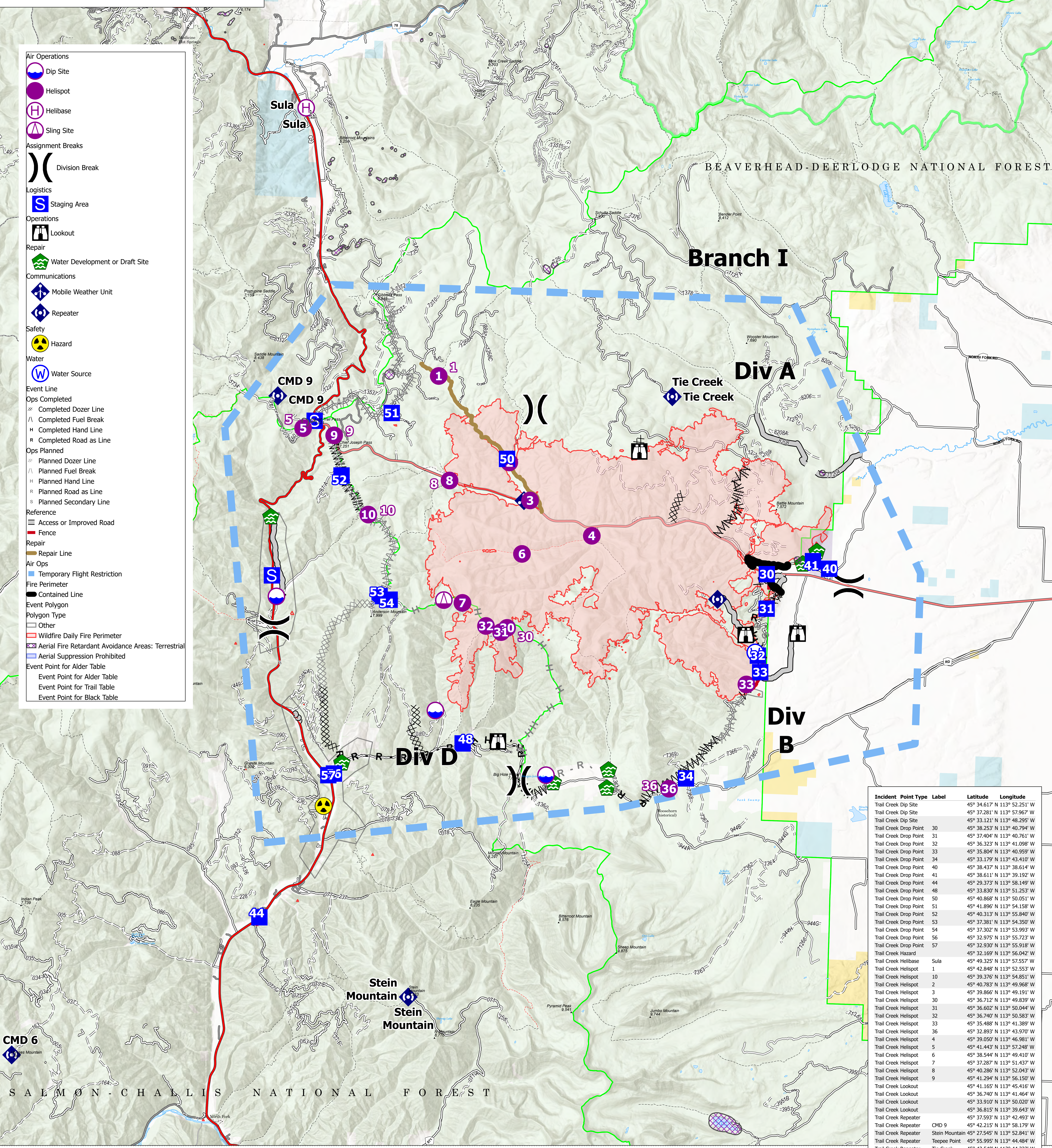
- Contained Line

Event Polygon

- Polygon Type
- Other
- Wildfire Daily Fire Perimeter
- Aerial Fire Retardant Avoidance Areas: Terrestrial
- Aerial Suppression Prohibited

Event Point for Alder Table

- Event Point for Alder Table
- Event Point for Trail Table
- Event Point for Black Table



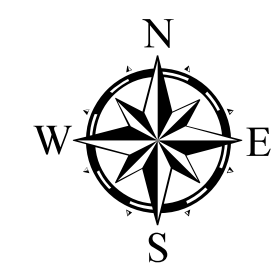
Incident Point Type Label	Latitude	Longitude
Trail Creek Dip Site	45° 34.617' N 113° 52.251' W	
Trail Creek Dip Site	45° 37.281' N 113° 57.967' W	
Trail Creek Dip Site	45° 33.121' N 113° 48.295' W	
Trail Creek Drop Point 30	45° 38.253' N 113° 40.794' W	
Trail Creek Drop Point 31	45° 37.404' N 113° 40.761' W	
Trail Creek Drop Point 32	45° 36.323' N 113° 41.098' W	
Trail Creek Drop Point 33	45° 35.804' N 113° 40.959' W	
Trail Creek Drop Point 34	45° 33.179' N 113° 43.410' W	
Trail Creek Drop Point 40	45° 38.437' N 113° 38.614' W	
Trail Creek Drop Point 41	45° 38.611' N 113° 39.192' W	
Trail Creek Drop Point 44	45° 29.373' N 113° 58.149' W	
Trail Creek Drop Point 48	45° 33.830' N 113° 51.253' W	
Trail Creek Drop Point 50	45° 40.868' N 113° 50.051' W	
Trail Creek Drop Point 51	45° 41.896' N 113° 54.158' W	
Trail Creek Drop Point 52	45° 40.313' N 113° 55.840' W	
Trail Creek Drop Point 53	45° 37.381' N 113° 54.350' W	
Trail Creek Drop Point 54	45° 37.302' N 113° 53.993' W	
Trail Creek Drop Point 56	45° 32.975' N 113° 55.723' W	
Trail Creek Drop Point 57	45° 32.830' N 113° 55.918' W	
Trail Creek Hazard	45° 32.169' N 113° 56.042' W	
Trail Creek Helibase Sula	45° 49.325' N 113° 57.557' W	
Trail Creek Helispot 1	45° 42.848' N 113° 52.553' W	
Trail Creek Helispot 10	45° 39.376' N 113° 54.851' W	
Trail Creek Helispot 2	45° 40.783' N 113° 49.968' W	
Trail Creek Helispot 3	45° 39.866' N 113° 49.191' W	
Trail Creek Helispot 30	45° 36.712' N 113° 49.839' W	
Trail Creek Helispot 31	45° 36.602' N 113° 50.044' W	
Trail Creek Helispot 32	45° 36.740' N 113° 50.583' W	
Trail Creek Helispot 33	45° 35.488' N 113° 41.389' W	
Trail Creek Helispot 36	45° 32.893' N 113° 43.970' W	
Trail Creek Helispot 4	45° 39.050' N 113° 46.981' W	
Trail Creek Helispot 5	45° 41.443' N 113° 57.248' W	
Trail Creek Helispot 6	45° 38.544' N 113° 49.410' W	
Trail Creek Helispot 7	45° 37.287' N 113° 51.437' W	
Trail Creek Helispot 8	45° 40.286' N 113° 52.043' W	
Trail Creek Helispot 9	45° 41.294' N 113° 56.150' W	
Trail Creek Lookout	45° 41.165' N 113° 45.416' W	
Trail Creek Lookout	45° 36.740' N 113° 41.464' W	
Trail Creek Lookout	45° 33.910' N 113° 50.020' W	
Trail Creek Lookout	45° 36.815' N 113° 39.643' W	
Trail Creek Repeater	45° 37.593' N 113° 42.493' W	
Trail Creek Repeater CMD 9	45° 42.215' N 113° 58.179' W	
Trail Creek Repeater Stein Mountain	45° 27.545' N 113° 52.841' W	
Trail Creek Repeater Teepee Point	45° 55.995' N 113° 44.484' W	
Trail Creek Repeater Tie Creek	45° 42.540' N 113° 44.322' W	
Trail Creek Sling Site	45° 37.340' N 113° 52.092' W	
Trail Creek Water Source	45° 36.319' N 113° 41.108' W	

Flight Restriction Information

Alder Creek - 1/7629- 12,500ft ceiling
Trail Creek - 1/7630 - 11,500ft ceiling
Black Mountain - 1/1730 - 10,500ft ceiling



SW Team 1
8/2/2021 1943
North American 1983 Datum. LatLong Grid



Fire perimeter updated from Acres from IR on 07/31/21 00:22

Scale: 1:54,688
1 inch equals 1 mile