

Operations

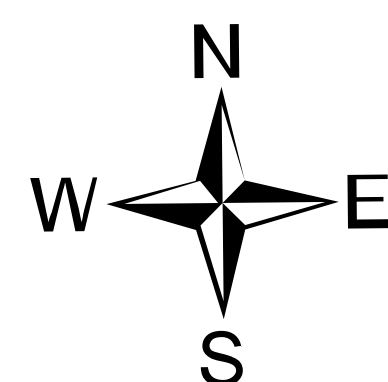
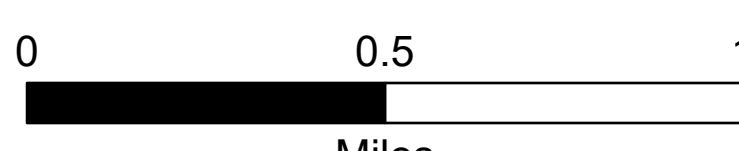
Trestle Creek Complex

IDIPF-000452

6181 acres

08/24/2021

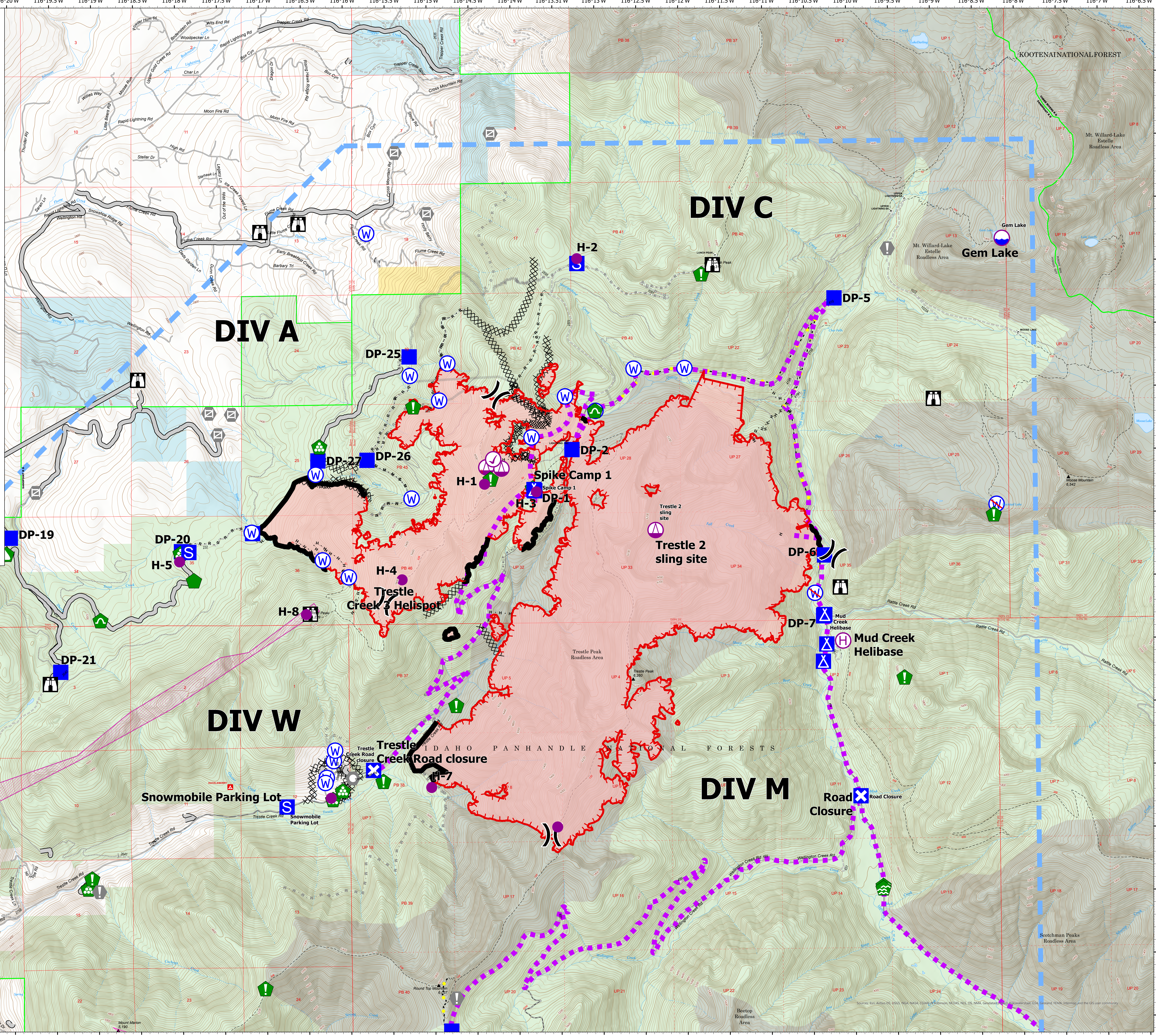
Acres from IR + GPS on 08/18/2021 2005



- Check Point
- Dip Site
- Helispot
- Helibase
- Sling Site
- Division Break
- Drop Point
- Closure
- Camp
- Staging Area
- Lookout
- Value at Risk
- Landmark
- Gate
- Water Development or Draft Site
- Structure Wrap
- Resource Location
- Repair Point
- Landing or Log Deck
- Dozer Push
- Culvert
- Clean Up Area
- Water Source
- Restricted Water Source
- Completed Dozer Line
- Completed Hand Line
- Completed Mixed Construction Line
- Planned Burnout
- Planned Dozer Line
- Planned Fuel Break
- Planned Hand Line
- Planned Mixed Construction Line
- Planned Road as Line
- Planned Secondary Line
- Access or Improved Road
- Highlighted Feature
- Route
- Temporary Flight Restriction
- Fire Edge
- Contained Line
- Other
- Wildfire Daily Fire Perimeter
- Retardant Avoidance
- Forest Service Land
- State Lands
- Bureau of Land Management Lands



B. Krausmann
8/24/2021 0547
Acres from IR + GPS
North American 1983 Datum, LatLong Grid



DIV A

DIV C

DIV W

DIV M

Trestle Creek Helispot

Spike Camp 1

Trestle 2 sling site

Mud Creek Helibase

Snowmobile Parking Lot

Road Closure

Gem Lake

Trestle Creek Road closure

LAKE PEND OREILLE

KOOTENAI NATIONAL FOREST

IDAHO PANHANDLE NATIONAL FORESTS

Scotchman Peaks Roadless Area

Mt. Willard-Lake Estelle Roadless Area

Trestle Peak Roadless Area

Betop Roadless Area

Mount Mason 5,190

Mount Mason 5,190

Roose Mountain 6,542

Mt. Willard-Lake Estelle Roadless Area

KOOTENAI NATIONAL FOREST