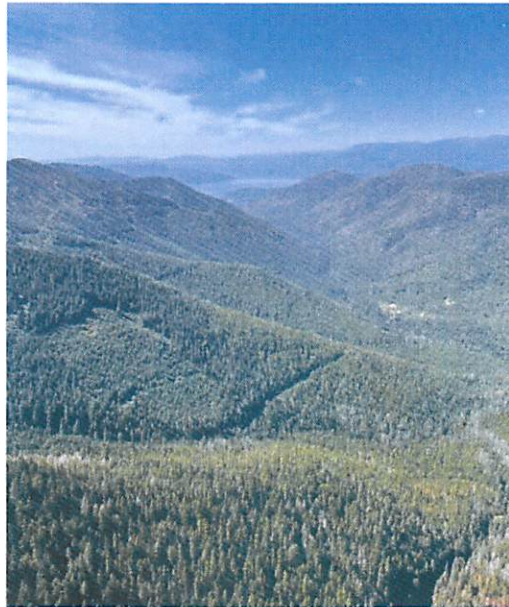


# Incident Action Plan

# Trestle Creek Complex

ID-IPF-000452

P1N5GH (0104)



August 30, 2021

0600-2200

Nevada Team 3



Scan for IAP and MAPS

# INCIDENT OBJECTIVES (ICS 202)

<b>1. Incident Name:</b>	<b>2. Operational Period:</b> DAY	
TRESTLE CREEK COMPLEX	Date/Time From: 08/30/2021 0600 MON	Date/Time To: 08/30/2021 2200 MON
<b>3. Objective(s):</b>		
1) KEEP FIRE:		
<ul style="list-style-type: none"> <li>• EAST OF TROUT ROAD 232 AND SOUTH OF FLUME CREEK DRAINAGE</li> <li>• NORTHEAST OF TROUT PEAK AND ROUND TOP MOUNTAIN TO PROTECT TRESTLE COMMUNITY</li> <li>• SOUTH OF LOWER QUARTZ AND SMORGASBORD CREEKS, NORTH OF WELLINGTON CREEK AND WEST OF LIGHTNING CREEK</li> </ul>		
2) RECOGNIZE AND PROTECT ALL VALUES AT RISK INCLUDING:		
<ul style="list-style-type: none"> <li>• ENDANGERED SPECIES ACT LISTED FISH SPECIES HABITAT</li> <li>• PRIVATE PROPERTIES AND INHOLDINGS</li> <li>• TRAILS, LOOKOUTS, AND OTHER RECREATIONAL USE INFRASTRUCTURE</li> <li>• ALL OTHER HIGH VALUE WILDLIFE HABITAT</li> </ul>		
3) PROTECT AND PRESERVE THE CULTURAL AND HERITAGE RESOURCES WITHIN AND ADJACENT TO FIRE SUPPRESSION ACTIVITIES. ASSESS AREAS AND OPPORTUNITIES TO PERFORM SUPPRESSION REPAIR IN AREAS WHERE FIRE CONDITIONS AND BEHAVIOR ALLOW		
<b>4. Operational Period Command Emphasis:</b>		
1) UTILIZE RISK ASSESSMENT AND MITIGATION PROCESSES TO MAINTAIN PUBLIC AND FIREFIGHTER SAFETY		
2) IMPLEMENT AND MAINTAIN LCES, WITH ADDITIONAL EMPHASIS ON COMMUNICATION		
3) COORDINATE WITH LOCAL, STATE, AND FEDERAL COOPERATORS TO MAINTAIN AND ENHANCE INTERAGENCY RELATIONSHIPS		
NOTE: MANAGE COVID-19 EXPOSURE AND FOLLOW CDC, FOREST, AND IMT GUIDELINES TO MINIMIZE POSSIBLE TRANSMISSION AND SPREAD OF THE VIRUS WITHIN THE INCIDENT MANAGEMENT ENVIRONMENT		
<b>General Situational Awareness:</b>		
1) ESTABLISH SITUATIONAL AWARENESS PRIOR TO WORKING AROUND HEAVY EQUIPMENT		
2) BE AWARE OF WHAT IS ABOVE YOU AND BELOW YOU ON THE MOUNTAIN		
3) WATCH OUT FOR ROLLING MATERIAL		
4) MONITOR WEATHER AND FIRE WEATHER FORECASTS		
5) PLAN ACTIONS BASED ON CURRENT AND EXPECTED FIRE BEHAVIOR		
6) ESTABLISH TRIGGER POINTS, ESPECIALLY ON WORK LOCATIONS WITH LENGTHY EGRESS TIMES.		
7) MAINTAIN AWARENESS OF SEASON LONG POTENTIAL FOR INCREASED FIRE BEHAVIOR IN SPITE OF SHORT TERM DROUGHT RELIEF		
<b>5. Site Safety Plan Required?</b> Yes <input type="checkbox"/> No <input checked="" type="checkbox"/>		
<b>Approved Site Safety Plan(s) Located</b>		
<b>6. Incident Action Plan</b> (the items checked below are included in this Incident Action Plan):		
<input checked="" type="checkbox"/> ICS 202	<input type="checkbox"/> ICS 207	Other Attachments:
<input checked="" type="checkbox"/> ICS 203	<input type="checkbox"/> ICS 208	<input checked="" type="checkbox"/> SAFETY MESSAGE
<input checked="" type="checkbox"/> ICS 204	<input checked="" type="checkbox"/> ICS 220	<input checked="" type="checkbox"/> MEDICAL PLAN
<input checked="" type="checkbox"/> ICS 205	<input checked="" type="checkbox"/> Map/Chart	<input type="checkbox"/> ANNOUNCEMENTS
<input type="checkbox"/> ICS 205A	<input checked="" type="checkbox"/> Weather Forecast/Tides/Currents	<input checked="" type="checkbox"/> BLANK ACTIVITY LOG
<input checked="" type="checkbox"/> ICS 206		
<b>7. Prepared by:</b> WENDY MARKHAM	<b>Position/Title:</b> PSC3	<b>Signature:</b> <i>Wendy Markham</i>
<b>8. Approved by Incident Commander:</b>	<b>Name:</b> <i>Andy Kertelso</i>	<b>Signature:</b> <i>Andy Kertelso</i>
ICS 202	IAP Page	Date/Time:



# Trestle Creek Complex Weather Forecast



**Forecast Iteration:** #15  
**Prediction For:** Day Shift  
**Prediction Date:** 08/30/2021  
**Forecast Issued:** Sunday 08/29/2021 at 1900 PDT

**Name of the Fire:** Trestle Creek Complex  
**Unit:** Idaho Panhandle National Forests  
**Incident Meteorologist:** Bob Nester  
**Signed:** *Bob Nester*

**WEATHER DISCUSSION:** A weak cold front will brush the Canadian border Monday. The increase in pressure gradients will produce southwest winds on the ridges around 15-25 mph. Winds on the terrain will be lighter unless you are exposed to a southwest to northeast drainage where gusts to 15 mph are possible. Otherwise there will be a slight increase in temperature and slight decrease in RHs.

**TODAY:** Mostly Sunny

**High Temperatures:** Valley/Drainages: 75-85° Mid-Slope (4000 FT): 68-75° Ridges (> 5000 FT): 64-69°  
**Minimum RH:** Valley/Drainages: 25-30% Mid-Slope (4000 FT): 28-32% Ridges (> 5000 FT): 32-38%

**DIV A: Midslope:** After 1000, Upslope 3-6 mph with gusts to 10 mph.  
**Ridge Winds:** 10-15 mph with gusts to 25 mph after 1300.

**DIV C: Upslope/upvalley (SW) after 1000.** At 4-8 mph with gust up to 12-15 mph.  
**Ridge Winds:** 10-15 mph with gusts to 25 mph after 1300.

**DIV M: Upslope/up-valley** 2-4 mph with gusts to 10 mph.  
**Ridge winds** 10-15 mph with gusts to 25 mph.

**DIV W:** South to Southwest 8-12 mph with gusts to 20 mph.

**Stability:** Inversion lifting between 1000-1200 PDT with mixing heights to around 6,000 feet AGL. Unstable mixed layer.  
**Chance of Rain:** 0% **LAL:** 1 **Transport Winds:** SW 10-20 mph.

**TONIGHT:** Mostly clear skies. Downslope/downvalley wind 2-5 mph. Thermal belt above 4000 feet.

**Low Temperatures:** Valley/Drainages: 42-46° Mid-Slope/Ridges (above 4000 FT): 46-52°  
**Relative Humidity Recovery:** Valley/Drainages: 65-75% Mid-Slope (above 4000 FT): 54-54%

**Stability:** Inversion developing between after 1900.  
**Chance of Rain:** 0% **LAL:** 1

**Extended Outlook (Tuesday through Thursday):** Mostly sunny skies each day. Breezy southwest winds on the ridges Tuesday with gusts to 20 mph, otherwise expect terrain driven winds 4-8 mph. A cooler air mass, with 20-30% cloud cover will bring cooler temperatures Wednesday and Thursday. Expect a 4-8 degree drop in temperature and a 5-10% increase in minimum RHs. A return to sunny skies, warmer and drier conditions is expected Friday.



QR code for WEATHER MATRIX Aug 29, 2021

Please submit weather observations to Bob Nester (IMET) at 406-370-2362 or email to [Bob.Nester@noaa.gov](mailto:Bob.Nester@noaa.gov)

# ORGANIZATION ASSIGNMENT LIST (ICS 203)

<b>1. Incident Name:</b>		TRESTLE CREEK COMPLEX	
<b>2. Operational Period:</b>		Date/Time From: 08/30/2021 0600	Date/Time To: 08/30/2021 2200
<b>3. Incident Commander(s) and Command Staff:</b>		AIR OPERATIONS HEIDI STRASSER (T)	
IC/UC	ANDY BERTELSON	DEPUTY	PAUL PETERSEN
SAFETY OFFICER	CHAD HOLBERT (T)	EQUIPMENT TIME	PORTIA JELINEK
INFORMATION OFFICER	KAREN ROBINSON (T)	PERSONNEL TIME	ANDY SAINDON (T)
<b>4. Agency/Organization Representative(s):</b>		<b>8. Finance/Administration Section:</b>	
Agency/Organization Name		CHIEF BONNIE KENNEDY	
USFS	JESSIE BERNER		
BLM	RAY PEASE		
REAF	KEVIN DAVIS		
REAF	BEN RICHARDSON (T)		
READ	NATALIE OTTO		
<b>5. Planning Section:</b>			
CHIEF	WENDY MARKHAM		
GIS SPECIALIST	KAT RUSSELL		
DEMobilization UNIT	BEN KRAUSMANN (T)		
INCIDENT METEOROLOGIST	BOB NESTER		
<b>6. Logistics Section:</b>			
CHIEF	KEVIN WILMOT		
MEDICAL UNIT	DENNIS MCLANE (T)		
BASE CAMP MANAGER	WILL SMITH (T)		
COMMUNICATIONS UNIT	BRIAN POST		
<b>7. Operations Section:</b>			
OPS SECTION CHIEF	ANTHONY PEREZ		
PLANNING OPS	ADAM HARRISON		
<b>8. Air Operations Branch:</b>			
DIVISION/GROUP A	KIP SHIELDS		
DIVISION/GROUP C	SCOTT BIDDLE (T)		
DIVISION/GROUP W	RYAN RIZZUTO		
DIVISION/GROUP M	REYES ROMERO (T)		
DIVISION/GROUP	BEAU ADLER		
DIVISION/GROUP	ROBERT SPENCE		
DIVISION/GROUP	BRIAN KOSCIELNIAK (T)		
<b>9. Prepared By:</b> Name: WENDY MARKHAM		<b>Signature:</b>	
Position/Title: PSC3		Date/Time: 08/29/2021 1752	
IAP Page		ICS 203	

**Division/Group Assignment List (ICS 204 WF)**  
Controlled Unclassified Information//Basic

<b>1. Incident Name:</b>				<b>3.</b>			
TRESTLE CREEK COMPLEX				<b>Branch:</b>		<b>Division/Group</b>	
<b>2. Operational Period:</b> DAY						<b>A</b>	
Date/Time From: 08/30/2021 0600 MON		Date/Time To: 08/30/2021 2200 MON					
<b>4. Operations Personnel</b>							
<b>OPERATIONS CHIEF</b>		ANTHONY PEREZ		<b>DIVISION/GROUP SUPERVISOR</b>		KIP SHIELDS SCOTT BIDDLE (T)	
<b>5. Resources Assigned this Period</b>							
Strike Team / Task Force / Resource Designator		LWD	Leader	Number Persons	Drop Off PT./Time		Pick Up PT./Time
O-153 TFLD (T)		09/01	EDWIN CLARK	1	DP 20 /0700		DP 20 /2000
O-148 FELB		09/03	SAM HEFFNER	1	DP 20 /0700		DP 20 /2000
O-143 DOZB (T)		09/04	VINCENT NEILSEN	1	DP 20 /0700		DP 20 /2000
O-164 HEQB		09/05	JAMES GOELLER	1	DP 20 /0700		DP 20 /2000
O-147 HEQB (T)		09/05	PATRICK MCGUNAGLE	1	DP 20 /0700		DP 20 /2000
O-179 FMOD ALASKA CUTTERS		09/05	JIM LECLAIR	2	DP 20 /0700		DP 20 /2000
O-194 TFLD (T)		09/07	CHRISTINE DROSKE	1	DP 20 /0700		DP 20 /2000
E-114 SUBLETTER 458			CASS URBIGKIT	3	DP 20 /0700		DP 20 /2000
E-26 EXCAVATOR		08/31	DYLAN HUNT	1	DP 20 /0700		DP 20 /2000
E-49 DOZ3 - AKRE		09/03	JOSH CHURCHILL	1	DP 20 /0700		DP 20 /2000
E-85 EXCAVATOR, T2 - AKRE		09/03	JOHN MACE	2	DP 20 /0700		DP 20 /2000
E-111 ENG6 DENNISON LOGGING		09/06	CURTIS DENNISON	2	DP 20 /0700		DP 20 /2000
E-63 WATER TENDER T2		09/09	JAMES PRIMMER	1	DP 20 /0700		DP 20 /2000
E-61 DOZER T3		09/09	BRYCE DALE	2	DP 20 /0700		DP 20 /2000
C-21 MASS T2IA		08/30	ROY LIARD	20	DP 20 /0700		DP 20 /2000
<b>8. Division/Group Communication Summary</b>							
Function	Channel	RX Frequency N/W	RX Tone/NAC	TX Frequency N/W	TX Tone/NAC	Mode	
TACTICAL	CH 3 TAC 1	168.05000	107.2	168.0500	107.2		
COMMAND	CH 1 CMD 4	170.9750	107.2	168.7000	107.2		
AIR TO GROUND	CH 13 A/C PRI	167.7000		167.7000			
<b>9. Prepared By (Resource Unit Leader)</b>			<b>Approved By (Planning Section Chief)</b>			<b>Date</b>	<b>Time</b>
WENDY MARKHAM						08/29/2021	1752

**Division/Group Assignment List (ICS 204 WF)**  
**Controlled Unclassified Information//Basic**

<b>1. Incident Name:</b>		<b>3.</b>				
TRESTLE CREEK COMPLEX		Branch:		Division/Group		
<b>2. Operational Period:</b> DAY		A				
Date/Time From: 08/30/2021 0600 MON	Date/Time To: 08/30/2021 2200 MON					
<b>4. Operations Personnel</b>						
<b>OPERATIONS CHIEF</b> ANTHONY PEREZ		<b>DIVISION/GROUP SUPERVISOR</b> KIP SHIELDS SCOTT BIDDLE (T)				
<b>5. Resources Assigned this Period</b>						
Strike Team / Task Force / Resource Designator	LWD	Leader	Number Persons	Drop Off PT./Time		Pick Up PT./Time
C-19 NEZ PERCE T2IA	09/02	LINDSAY STEDMAN	20	DP 20 /0700		DP 20 /2000
C-27 LAVA RIVER #7	09/12	DANIEL GUERRERO	20	DP 20 /0700		DP 20 /2000
O-135 EMTF	08/31	AARON CROWNOVER	1	DP 20 /0700		DP 20 /2000
<b>6. Control Operations/Work Assignments:</b>						
<p>TASK: CONSTRUCT DIRECT AND INDIRECT FIRELINE. CONTINUE TO SCOUT POTENTIAL FIRELINE LOCATIONS.          PURPOSE: KEEP FIRE FROM IMPACTING VALUES AT RISK AND IDENTIFY APPROPRIATE LINE FOR CONTROL OPERATIONS.          END STATE: FIRELINE IN CORRECT LOCATION WITH RIGHT DIMENSIONS TO CONTAIN THE FIRE.</p>						
<b>7. Special Instructions:</b>						
WORK DIRECTLY WITH REAF FOR PROPSD/PLANNED USE OF HEAVY EQUIPMENT.						
<b>8. Division/Group Communication Summary</b>						
Function	Channel	RX Frequency N/W	RX Tone/NAC	TX Frequency N/W	TX Tone/NAC	Mode
TACTICAL	CH 3 TAC 1	168.05000	107.2	168.0500	107.2	
COMMAND	CH 1 CMD 4	170.9750	107.2	168.7000	107.2	
AIR TO GROUND	CH 13 A/C PRI	167.7000		167.7000		
<b>9. Prepared By (Resource Unit Leader)</b>		<b>Approved By (Planning Section Chief)</b>		<b>Date</b>	<b>Time</b>	
WENDY MARKHAM				08/29/2021	1752	

## Division/Group Assignment List (ICS 204 WF)

Controlled Unclassified Information//Basic

<b>1. Incident Name:</b>			<b>3.</b>			
TRESTLE CREEK COMPLEX			<b>Branch:</b>		<b>Division/Group</b>	
<b>2. Operational Period: DAY</b>					<b>C</b>	
Date/Time From: 08/30/2021 0600      MON			Date/Time To: 08/30/2021 2200      MON			
<b>4. Operations Personnel</b>						
<b>OPERATIONS CHIEF</b>		ANTHONY PEREZ		<b>DIVISION/GROUP SUPERVISOR</b>		RYAN RIZZUTO REYES ROMERO (T)
<b>5. Resources Assigned this Period</b>						
Strike Team / Task Force / Resource Designator		LWD	Leader	Number Persons	Drop Off PT./Time	Pick Up PT./Time
O-108 FMOD #2 BROTHERS		09/04	ROSANDER/MASCHO	2	MUD CREEK /0700	MUD CREEK /2000
E 51 ENG6 MS-MNF 621 **		08/31	ACE HADDOCK	3	MUD CREEK /0700	MUD CREEK /2000
E-94 ENG3 TRITAN		08/31	REX MILLER	3	MUD CREEK /0700	MUD CREEK /2000
E-104 ENG3 CAHOON		08/31	TREVOR SCOTT	3	MUD CREEK /0700	MUD CREEK /2000
E-92 MASTICATOR		09/02	RANDY SOUTHWICK	3	MUD CREEK /0700	MUD CREEK /2000
E-106 ENG6 MT-BDF - 72		09/03	MITCHELL ROBBINS	4	MUD CREEK /0700	MUD CREEK /2000
E-108 ENG4 IFM		09/06	TERRY MCGOVERN	2	MUD CREEK /0700	MUD CREEK /2000
E-64 AKRE SKIDDER		09/09	BRIAN KIRSHBAUN	1	MUD CREEK /0700	MUD CREEK /2000
C-15 LAVA RIVER T2		09/02	JESUS RUIZ	20	MUD CREEK /0700	MUD CREEK /2000
C-23 MILLER #1		09/06	JOSH DENNIS	20	MUD CREEK /0700	MUD CREEK /2000
C-25 FLORIDA STATE #4 T2IA		09/07	CODY WALL	20	MUD CREEK /0700	MUD CREEK /2000
O-182 EMPF		09/06	JON KOCHERGIN	1	MUD CREEK /0700	MUD CREEK /2000
<b>8. Division/Group Communication Summary</b>						
Function	Channel	RX Frequency N/W	RX Tone/NAC	TX Frequency N/W	TX Tone/NAC	Mode
TACTICAL	CH 4 TAC 2	168.2000	107.2	168.2000	107.2	
COMMAND	CH 1 CMD 4	170.9750	107.2	168.7000	107.2	
AIR TO GROUND	CH 13 A/C PRI	167.7000		167.7000		
<b>9. Prepared By (Resource Unit Leader)</b>			<b>Approved By (Planning Section Chief)</b>		<b>Date</b>	<b>Time</b>
WENDY MARKHAM					08/29/2021	1752

## Division/Group Assignment List (ICS 204 WF)

Controlled Unclassified Information//Basic

<b>1. Incident Name:</b>			<b>3.</b>			
TRESTLE CREEK COMPLEX			<b>Branch:</b>		<b>Division/Group</b>	
<b>2. Operational Period:</b>			<b>C</b>			
<b>DAY</b>						
Date/Time From: 08/30/2021 0600      MON		Date/Time To: 08/30/2021 2200      MON				
<b>4. Operations Personnel</b>						
<b>OPERATIONS CHIEF</b>		ANTHONY PEREZ		<b>DIVISION/GROUP SUPERVISOR</b>		RYAN RIZZUTO REYES ROMERO (T)
<b>6. Control Operations/Work Assignments:</b>						
<p>TASK: CONSTRUCT DIRECT AND INDIRECT FIRELINE. CONTINUE TO SCOUT POTENTIAL FIRELINE LOCATIONS.          PURPOSE: KEEP FIRE FROM IMPACTING VALUES AT RISK AND IDENTIFY APPROPRIATE LINE FOR CONTROL OPERATIONS.          END STATE: FIRELINE IN CORRECT LOCATION WITH RIGHT DIMENSIONS TO CONTAIN THE FIRE.</p>						
<b>7. Special Instructions:</b>						
<p>WORK DIRECTLY WITH REAF FOR PROPSSED/PLANNED USE OF HEAVY EQUIPMENT.</p> <p>** RESOURCES AVAILABLE FOR INITIAL ATTACK</p>						
<b>8. Division/Group Communication Summary</b>						
Function	Channel	RX Frequency N/W	RX Tone/NAC	TX Frequency N/W	TX Tone/NAC	Mode
TACTICAL	CH 4 TAC 2	168.2000	107.2	168.2000	107.2	
COMMAND	CH 1 CMD 4	170.9750	107.2	168.7000	107.2	
AIR TO GROUND	CH 13 A/C PRI	167.7000		167.7000		
<b>9. Prepared By (Resource Unit Leader)</b>			<b>Approved By (Planning Section Chief)</b>		<b>Date</b>	<b>Time</b>
WENDY MARKHAM					08/29/2021	1752



**Division/Group Assignment List (ICS 204 WF)**  
Controlled Unclassified Information//Basic

1. Incident Name:			3.			
TRESTLE CREEK COMPLEX			Branch:		Division/Group	
2. Operational Period: DAY					<b>M</b>	
Date/Time From: 08/30/2021 0600	MON	Date/Time To: 08/30/2021 2200	MON			
4. Operations Personnel						
OPERATIONS CHIEF		ANTHONY PEREZ		DIVISION/GROUP SUPERVISOR		
				ROBERT SPENCE BRIAN KOSCIELNIAK (T)		
5. Resources Assigned this Period						
Strike Team / Task Force / Resource Designator		LWD	Leader	Number Persons	Drop Off PT./Time	Pick Up PT./Time
C-10 CHIEF MOUNTAIN IHC		09/07	LYLE ST. GOODARD SR	20	DIV M SPIKE/0700	DIV M SPIKE/2000
C-22 LOLO REGS T2IA		09/07	MAX HARRISON	20	DIV M SPIKE /0700	DIV M SPIKE /2000
C-14 BEAR JAW T2IA		08/31	SHELBY ERICKSON	20	DIV M SPIKE /0700	DIV M SPIKE /2000
O-167 EMPF		09/07	ADAM OSIADICZ	1	DIV M SPIKE /0700	DIV M SPIKE /2000
6. Control Operations/Work Assignments:						
TASK: MONITOR FIRE BEHAVIOIR. PURPOSE: IDENTIFY APPROPRIATE LOCATIONS FOR CONTAINMENT LINES USING AERIAL WATER APPLICATIONS IN THE DIVISION. END STATE: USE APPROVED TECHINQUES IN DIVISION TO MINIMIZE FIRE SPREAD.						
TASK: CONSTRUCT DIRECT AND INDIRECT FIRELINE. CONTINUE TO SCOUT POTENTIAL FIRELINE LOCATIONS. PURPOSE: KEEP FIRE FROM IMPACTING VALUES AT RISK AND IDENTIFY APPROPRIATE LINE FOR CONTROL OPERATIONS. END STATE: FIRELINE IN CORRECT LOCATION WITH RIGHT DIMENSIONS TO CONTAIN THE FIRE.						
7. Special Instructions:						
8. Division/Group Communication Summary						
Function	Channel	RX Frequency N/W	RX Tone/NAC	TX Frequency N/W	TX Tone/NAC	Mode
TACTICAL	CH 6 TAC 4	166.7250	107.2	166.7250	107.2	
COMMAND	CH 1 CMD 4	170.9750	107.2	168.7000	107.2	
AIR TO GROUND	CH 13 A/C PRI	167.7000		167.7000		
9. Prepared By (Resource Unit Leader)			Approved By (Planning Section Chief)		Date	Time
WENDY MARKHAM					08/29/2021	1752

**Division/Group Assignment List (ICS 204 WF)**  
Controlled Unclassified Information//Basic

<b>1. Incident Name:</b>			<b>3.</b>			
TRESTLE CREEK COMPLEX			<b>Branch:</b>		<b>Division/Group</b>	
<b>2. Operational Period:</b> DAY					<b>W</b>	
Date/Time From: 08/30/2021 0600 MON	Date/Time To: 08/30/2021 2200 MON					
<b>4. Operations Personnel</b>						
<b>OPERATIONS CHIEF</b> ANTHONY PEREZ		<b>DIVISION/GROUP SUPERVISOR</b> BEAU ADLER				
<b>5. Resources Assigned this Period</b>						
Strike Team / Task Force / Resource Designator	LWD	Leader	Number Persons	Drop Off PT./Time	Pick Up PT./Time	
O-152 TFLD (T)	09/01	NICK GROOMS	1	STATION 2 /0700	STATION 2 /2000	
O-180 FMOD HEADWATERS	09/06	BEN LITZ	2	STATION 2 /0700	STATION 2 /2000	
O-144 HEQB (T)	09/07	SEAN DOWIE	1	STATION 2 /0700	STATION 2 /2000	
O-192 FMOD BROTHERS	09/08	BRIAN DEMEAR	2	STATION 2 /0700	STATION 2 /2000	
E-62 WTS2	09/09	SAM ELY	1	STATION 2 /0700	STATION 2 /2000	
E-24 ENG6 BERTHOUD E626	08/31	LYLE FENDERSON	3	STATION 2 /0700	STATION 2 /2000	
E-103 ENG3 JUAB FIRE HBR-33	09/01	SAM THOMAS	3	STATION 2 /0700	STATION 2 /2000	
E-69 ENG6 J3	09/03	FERLON WILLOW	3	STATION 2 /0700	STATION 2 /2000	
E-25 FOUSTS, INC, EXCV T2	09/06	DEAN VAN ALSTYNE	1	STATION 2 /0700	STATION 2 /2000	
C-20 LONE STAR STATE #1	09/02	LUKE KANCLERZ	18	STATION 2 /0700	STATION 2 /2000	
E-88 AMBU GUARDIAN ELITE	08/31	MARIO SCHNEIDER	2	STATION 2 /0700	STATION 2 /2000	
O-195 EMTF	09/09	NICHOLAS BECKER	1	STATION 2 /0700	STATION 2 /2000	
<b>6. Control Operations/Work Assignments:</b>						
TASK: PROVIDE POINT PROTECTION PREPARATION. PURPOSE: MINIMIZE FIRE IMPACTS TO PRIVATE RESIDENCES IN THE FIRE AREA. END STATE: AREA TO BE PROTECTED IS PREPPED AND SECURED.						
<b>8. Division/Group Communication Summary</b>						
Function	Channel	RX Frequency N/W	RX Tone/NAC	TX Frequency N/W	TX Tone/NAC	Mode
TACTICAL	CH 5 TAC 3	168.6000	107.2	168.6000	107.2	
COMMAND	CH 1 CMD 4	170.9750	107.2	168.7000	107.2	
AIR TO GROUND	CH 13 A/C PRI	167.7000		167.7000		
<b>9. Prepared By (Resource Unit Leader)</b>		<b>Approved By (Planning Section Chief)</b>		<b>Date</b>	<b>Time</b>	
WENDY MARKHAM				08/29/2021	1752	

**Division/Group Assignment List (ICS 204 WF)**  
Controlled Unclassified Information//Basic

<b>1. Incident Name:</b>		<b>3.</b>	
TRESTLE CREEK COMPLEX		<b>Branch:</b>	<b>Division/Group</b>
<b>2. Operational Period:</b> DAY			<b>W</b>
Date/Time From: 08/30/2021 0600 MON	Date/Time To: 08/30/2021 2200 MON		

<b>4. Operations Personnel</b>			
<b>OPERATIONS CHIEF</b>	ANTHONY PEREZ	<b>DIVISION/GROUP SUPERVISOR</b>	BEAU ADLER

**6. Control Operations/Work Assignments:**

TASK: CONSTRUCT DIRECT AND INDIRECT FIRELINE.  
 PURPOSE: KEEP FIRE FROM IMPACTING VALUES AT RISK.  
 END STATE: FIRELINE IN CORRECT LOCATION WITH RIGHT DIMENSIONS TO CONTAIN THE FIRE.

**7. Special Instructions:**

WORK DIRECTLY WITH REAF FOR PROPSSED/PLANNED USE OF HEAVY EQUIPMENT.

<b>8. Division/Group Communication Summary</b>						
Function	Channel	RX Frequency N/W	RX Tone/NAC	TX Frequency N/W	TX Tone/NAC	Mode
TACTICAL	CH 5 TAC 3	168.6000	107.2	168.6000	107.2	
COMMAND	CH 1 CMD 4	170.9750	107.2	168.7000	107.2	
AIR TO GROUND	CH 13 A/C PRI	167.7000		167.7000		
<b>9. Prepared By (Resource Unit Leader)</b>			<b>Approved By (Planning Section Chief)</b>		<b>Date</b>	<b>Time</b>
WENDY MARKHAM					08/29/2021	1752

<b>1. Incident Name:</b> <b>Trestle Creek Complex</b>	<b>2. Operational Period:</b> Date From: 08-30-21      Date To: 8-30-21 Time From: 0600              Time To: 2200	<b>3. Sunrise:</b> <b>Sunset:</b> 0600                              1931
--	--	---

<b>4. Remarks (safety notes, hazards, air operations specialequipment, etc.):</b>  <b>Approved Dip sites:</b> Gem Lake: 48° 22.7076 -116° 8.2224 Porcupine Lake 48° 14.5254 -116° 11.0964 Lake Pend Oreille  When using Lake Pend Oreille water or retardant, avoid dropping into the waters of Trestle Creek (runs along trestle creek road) and Lightning Creek (runs along lightning creek road). Drops within 300' of Trestle or Lightning Creeks must use water from Gem or Porcupine Lake  Reference Trestle Creek Aviation Map for Helispot Coordinates Send AC costs to jkeefe@blm.gov	<b>5. Ready Alert Aircraft:</b> Medivac: See medical plan in IAP Yellowstone 3BH short haul / STEP New Incident:	<b>6. Temporary Flight Restriction Number:</b> TFR 1/7274 Altitude: SFC to 10,500 msl Center Point: 48°19.150 / -116°14.150
--	---	--

7. Personnel:	Name:	Phone Number:	Air/Ground Primary	AM	FM	
Air Operations	Jason Keefe	928-671-1140	Air/Ground Secondary			
Air Operations (T)	Heidi Strasser	702-683-3636	Command CMD-4			170.9750 RX 107.2 168.7000 TX 107.2
Air Tactical Group Supervisor			Local Repeater Lunch Peak			172.400 RX 107.2 165.4875 TX 136.5
Helicopter Coordinator			EMS 2			RX/TX 155.2800 TX CG 156.7
Helibase Manager			Air Guard			168.6250 TX 110.9

**10. Helicopters (use additional sheets as necessary):**

FAA N#	Category/Kind/Type	Make/Model	Base	Available	Start	Remarks
N173BH	T3 Helicopter w/ Shorthaul	Astar 350B3	Orchard Helispot	0800	0900	
N51BH	T1 Helicopter w/ Bucket	Blackhawk HH-60L	Sandpoint Airport SZT	0800	0900	
N312KA	T1 Helicopter w/ Bucket	Kmax K-1200	Sandpoint Airport SZT	0800	0900	

<b>11. Prepared by:</b> Name: Jason Keefe	Position/Title: Air Ops	Signature:
<b>ICS 220, Page 1</b>		Date/Time: 08-29-21 18:00

## INCIDENT RADIO COMMUNICATIONS PLAN (ICS 205)

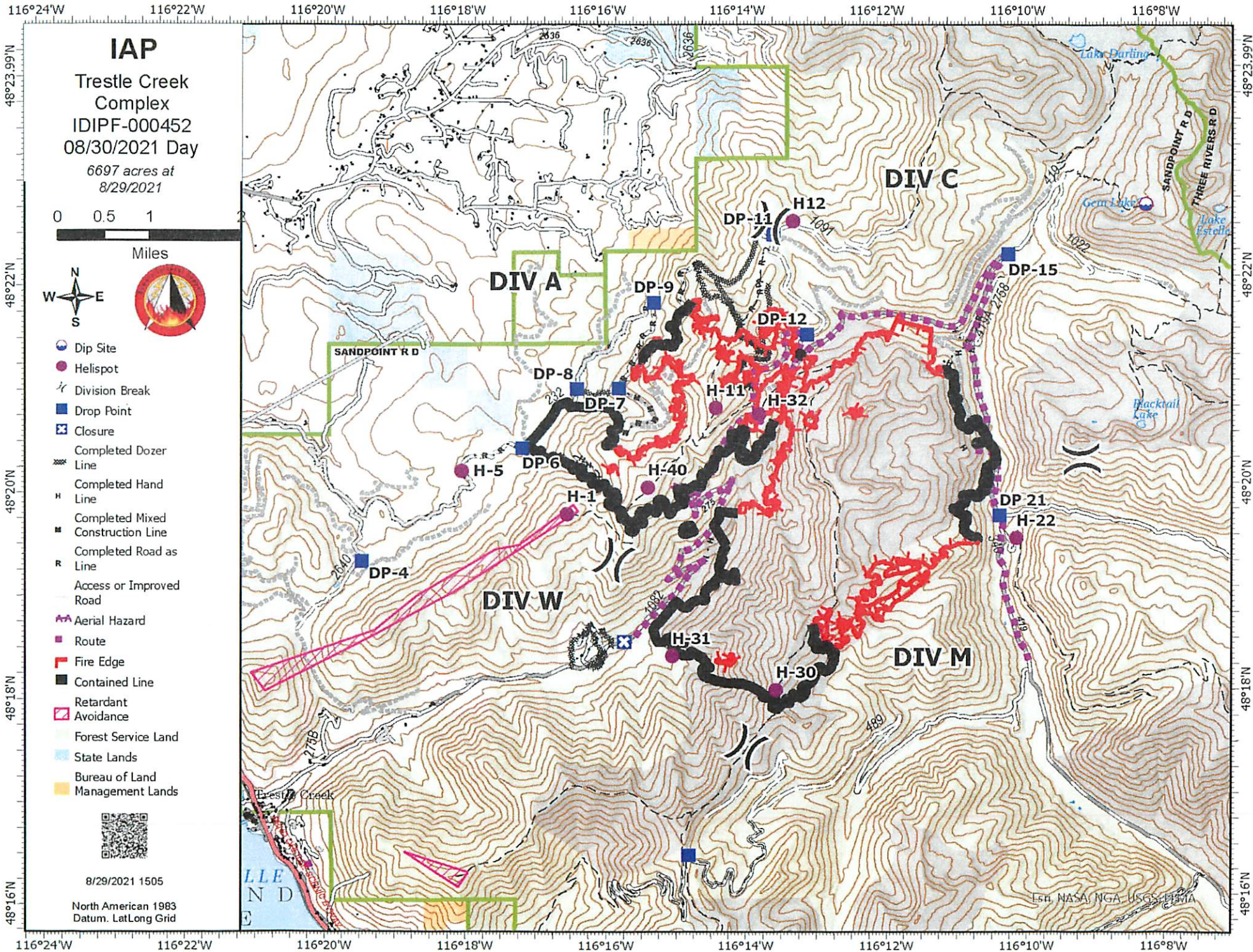
<b>1. Incident Name</b> Trestle Creek Complex	<b>2. Date/Time Prepared:</b> Date: 08/25/2021 Time: 1700	<b>3. Operational Period:</b> Date From: 08/26/2021 Date To: 08/27/2021 Time From: 0600 Time To: 0600
--	---	---

### 4. Basic Radio Channel Utilization

Ch. #	Function	Channel Name	Assignment	RX Freq.	RX Tone	TX Freq.	TX Tone	Band	Remarks
1	COMMAND	CMD-4	ALL	170.9750	107.2	168.7000	107.2	N	Command @ Lunch Pk
2	COMMAND	CMD-6	ALL	173.7250	107.2	162.7500	107.2	N	Command @ Round Pk
3	TACTICAL	TAC - 1	A	168.05000	107.2	168.05000	107.2	N	
4	TACTICAL	TAC - 2	C	168.20000	107.2	168.20000	107.2	N	
5	TACTICAL	TAC- 3	W	168.60000	107.2	168.60000	107.2	N	
6	TACTICAL	TAC - 4	M	166.7250	107.2	166.7250	107.2	N	
7	Local Rept	LUNCH PK		172.4000	107.2	165.4875	136.5	N	Lunch Pk IPNF Rptr Local Dispatch
8	Local Rept	LIGHTNING		172.4000	107.2	165.4875	167.9	N	Lightning Pk IPNF Rptr Local Dispatch
9	Local Rept	SANDPOINT BALD		172.4000	107.2	165.4875	110.9	N	Sandpoint Baldy IPNF Rptr Local Dispatch
10	Local Rept	SCHWEITZ		159.3375	100.0	151.4375	136.5	N	Schweitzer Mtn Rptr Local Dispatch
11									
12									
13	AIR TO GROUND	A/G PRI	ALL	167.7000		167.7000		N	A/G PRIMARY/TACTICAL
14	AIR TO GROUND	A/G SEC	ALL	167.2000		167.2000		N	A/G SECONDARY/SUPPORT
15	EMS	EMS2		155.2800		155.2800	156.7	N	Emergency Air
16	AIR GUARD	AIRGUARD		168.62500		168.62500	110.9	N	AIR GUARD

<b>5. Prepared by:</b> Name: Brian Post, COMT	Signature: _____
ICS 205	IAP Page _____ <i>Stuart B Post</i>

**Radio Contacts:**  
 COMT Brian Post 304-940-9230



## Trestle Creek Complex Demob List

**8/30/2021**

O-95	Justin Adams	0730
O-140	Otto Largen	0745

**8/31/2021**

O-116	Joseph Names	0730
O-185	Chi Chang	0745
C-18	Trapper Camp Crew - MOB#7	0800
C-21	Mass #1	
O-93	Benjamin Richardson	

**9/01/2021**

C-14	Bear Jaw - AZ-HIG	0730
E-24	Berthoud FPD #626	0745
E-88	Guardian Elite Medical Services	0800
O-135	Aaron Crownover	0815
O-152	Nicholas Grooms	0830
O-153	Edwin Clark	0845
O-161	Marlene Eno-Hendren	0900
E-92	Masticator -	0915
E-94	Tritan Inc. Engine T3	0930
E-104	Brain Cahoon Engine - T3	0945



# Northern Rockies Chainsaw Parts Order Form

Please see the back page for part order numbers and items requiring an approved Property Loss and Damage form.

Name:		Gen. Msg #:	
Resource #:		Request Date:	
Contact #:		Need by Date/Time:	
TO BE FILLED BY: (circle one):	<input type="checkbox"/> Buying Team	<input type="checkbox"/> Home Unit*	<input type="checkbox"/> Cache
*Email to Send RO#'s to:			

## Chainsaw Information

Make (circle one or fill in):	<input type="checkbox"/> Stihl	<input type="checkbox"/> Husqvarna	<input type="checkbox"/> Other:
Model:			
Serial #			
Bar Length (circle one): <input type="checkbox"/> 20" <input type="checkbox"/> 24" <input type="checkbox"/> 28" <input type="checkbox"/> 30" <input type="checkbox"/> 32" <input type="checkbox"/> 36" <input type="checkbox"/> Other:			

## Request:

Part Name and Number	Quantity	Part Name and Number	Quantity

## For Sprocket & Chain Orders (circle one or fill in):

# of Drivers:			
Pitch (*):	<input type="checkbox"/> 3/8"	<input type="checkbox"/> .325"	<input type="checkbox"/> Other:
Gauge:	<input type="checkbox"/> .50	<input type="checkbox"/> .063	<input type="checkbox"/> Other:
Tooth Layout:	<input type="checkbox"/> Full	<input type="checkbox"/> Semi-Skip	<input type="checkbox"/> Full Skip
Tooth Cut:	<input type="checkbox"/> Chisel	<input type="checkbox"/> Semi-Chisel	<input type="checkbox"/> Other:
# of Sprocket Teeth:			

Concurrence (Line Supervisor i.e. DIVS): \_\_\_\_\_

Supply Unit Leader has checked that the items ordered do not need an approved Property Loss & Damage Form, or that the approval is attached. (Supply Unit Leader checks box and initials here: \_\_\_\_\_).



**First source of supply is Cache, shaded blocks indicate items available thru Northern Rockies Cache. Items requiring an approved Property Loss and Damage form are in a separate list at the bottom.**

PART	034/341	360/MS360	MS361	MS362	038/381	044/MS440	MS441	460/MS461	MS462	0640/650	MS660	MS880	
Spark Plug (NFES# 000344)	Bosch WSR6F NGK BPMR7A Champion RCJ6Y	Bosch WSR6F NGK BPMR7A Champion RCJ6Y	Bosch WSR6F NGK BPMR7A Champion RCJ6Y	Bosch WSR6F NGK BPMR7A Champion RCJ6Y	Bosch WSR6F NGK BPMR7A Champion RCJ6Y	Bosch WSR6F NGK BPMR7A Champion RCJ6Y	Bosch WSR6F NGK BPMR7A Champion RCJ6Y	Bosch WSR6F NGK BPMR7A Champion RCJ6Y	Bosch WSR6F NGK BPMR7A Champion RCJ6Y	Bosch USR7AC NGK CMR6H	Bosch WSR6F NGK BPMR7A Champion RCJ6Y	Bosch WSR6F NGK BPMR7A Champion RCJ6Y	Bosch WSR6F NGK BPMR7A Champion RCJ6Y
Needle Cage Bearing (NFES# 066565)	9512-933-2380	9512-933-2380	9512-933-2380	9512-933-2380	9512-933-3150	9512-933-2380	9512-933-2380	9512-933-2380	9512-933-2380	9512-933-2382	9512-933-2382	9512-933-3170	
Retaining Washer for Rim Sprocket	0000-958-1022	0000-958-1022	0000-958-1032	0000-958-1032	0000-958-1231	0000-958-1032	0000-958-1032	0000-958-1032	0000-958-1032	0000-958-1032	0000-958-1032	0000-958-1236	
E Clip (NFES# 066517)	9460-624-0801	9460-624-0801	9460-624-0801	9460-624-0801	9460-624-1001	9460-624-0801	9460-624-0801	9460-624-0801	9460-624-0801	9460-624-0801	9460-624-0801	9460-624-1001	
Fuel Filter	0000-350-3504	0000-350-3504	0000-350-3504	0000-350-3504	0000-350-3504	0000-350-3504	0000-350-3504	0000-350-3504	0000-350-3518	0000-350-3504	0000-350-3500	0000-350-3504	
Air Filter - HD (NFES# 066756)	1125-120-1626	1125-120-1612 1125-120-1626	1135-120-1600	1140-140-4401 1140-140-4402	1119-120-1611	0000-140-4402	0000-120-1654	0000-120-1654	1142-140-4402	0000-140-4402	0000-140-4402	0000-140-4402	
Pre Filter - OEM	N/A	N/A	N/A	N/A	1119-120-1500	0000-141-0300	0000-141-0300	0000-141-0300	N/A	0000-141-0300	0000-141-0300	0000-141-0300	
Bar Nut (NFES# 06661)	0000-955-0801	0000-955-0801	0000-955-0801	0000-955-0801	0000-955-0801	0000-955-0801	0000-955-0801	0000-955-0801	0000-995-0803	0000-955-0801	0000-955-0801	0000-955-0903	
Inner Slide Plate	1122-664-1000	1122-664-1000	1122-664-1000	1122-664-1000	1119-664-1000	1128-664-1001	1138-664-1000	1128-664-1001	1128-664-1001	1128-664-1001	1128-664-1001	1124-664-1001	
<b>STIHL RAPID - Super (RS)</b>													
Chain 3/8" PITCH - .050" GA - DR													
20" - 72 DR	3623-005-0072	3623-005-0072	3623-005-0072	3623-005-0072	3623-005-0072	3623-005-0072	3623-005-0072	3623-005-0072	3623-005-0072	3623-005-0072	3623-005-0072	3623-005-0072	
25" - 84 DR (NFES# 006500)	3623-005-0084	3623-005-0084	3623-005-0084	3623-005-0084	3623-005-0084	3623-005-0084	3623-005-0084	3623-005-0084	3623-005-0084	3623-005-0084	3623-005-0084	3623-005-0084	
28" - 91 DR	3623-005-0091	3623-005-0091	3623-005-0091	3623-005-0091	3623-005-0091	3623-005-0091	3623-005-0091	3623-005-0091	3623-005-0091	3623-005-0091	3623-005-0091	3623-005-0091	
32" - 105 DR	N/A	N/A	N/A	N/A	N/A	3623-005-0105	3623-005-0105	3623-005-0105	3623-005-0105	3623-005-0105	3623-005-0105	3623-005-0105	
<b>STIHL RAPID - Super - Full Skip (RSF)</b>													
Chain 3/8" PITCH - .050" GA - DR													
20" - 72 DR	N/A	3676-005-0072	3676-005-0072	3676-005-0072	3676-005-0072	3676-005-0072	3676-005-0072	3676-005-0072	3676-005-0072	3676-005-0072	3676-005-0072	3676-005-0072	
25" - 84 DR	3676-005-0084	3676-005-0084	3676-005-0084	3676-005-0084	3676-005-0084	3676-005-0084	3676-005-0084	3676-005-0084	3676-005-0084	3676-005-0084	3676-005-0084	3676-005-0084	
28" - 91 DR	3676-005-0091	3676-005-0091	3676-005-0091	3676-005-0091	3676-005-0091	3676-005-0091	3676-005-0091	3676-005-0091	3676-005-0091	3676-005-0091	3676-005-0091	3676-005-0091	
32" - 105 DR	N/A	N/A	N/A	N/A	N/A	3676-005-0105	3676-005-0105	3676-005-0105	3676-005-0105	3676-005-0105	3676-005-0105	3676-005-0105	
Bar oil: Quantity - Gallon	NFES # 1880												
Bar oil: Quantity - Quart	NFES # 1869												
2 Cycle Oil: Quantity - Quart	NFES # 0341												

The following parts require an approved Property Loss & Damage form prior to ordering:

<b>Guide Bars - 3/8" - .050" GA (STIHL ROLLOMATIC - ES)</b>												
20"	3003-000-8822	3003-000-8822	3003-000-8822	3003-000-8822	3003-000-8822	3003-000-8822	3003-000-8822	3003-000-8822	3003-000-8822	3003-000-8822	3003-000-8822	3003-000-8822
25" (NFES# 066584)	N/A	3003-000-8830	3003-000-8830	3003-000-8830	3003-000-8830	3003-000-8830	3003-000-8830	3003-000-8830	3003-000-8830	3003-000-8830	3003-000-8830	3003-000-8830
28"	N/A	N/A	N/A	N/A	N/A	3003-000-8838	3003-000-8838	3003-000-8838	3003-000-8838	3003-000-8838	3003-000-8838	3003-000-8838
32"	N/A	N/A	N/A	N/A	N/A	3003-000-8846	3003-000-8846	3003-000-8846	3003-000-8846	3003-000-8846	3003-000-8846	3003-000-8846
Rim Sprocket Kit 3/8 - 7T	1125-007-1040	1125-007-1223	1128-007-1000	1135-007-1002	1119-007-1003	1128-007-1000	1128-007-1000	1128-007-1017	1128-007-1000	1122-007-1000	1122-007-1000	N/A
Clutch Drum	Order Sprocket Kit	Order Sprocket Kit	Order Sprocket Kit	Order Sprocket Kit	Order Sprocket Kit	Order Sprocket Kit	Order Sprocket Kit	Order Sprocket Kit	Order Sprocket Kit	Order Sprocket Kit	Order Sprocket Kit	Order Sprocket Kit
Rim Sprocket 3/8 7T (NFES# 066652)	0000-642-1231	0000-642-1023	0000-642-1223	0000-642-1223	0000-642-1223	0000-642-1223	0000-642-1223	0000-642-1223	0000-642-1223	0000-642-1223	0000-642-1223	N/A
Rim sprocket kit 3/8 - 8T	N/A	N/A	1128-007-1001	1128-007-1001	N/A	1128-007-1001	1128-007-1001	1128-007-1001	1128-007-1001	1122-007-1001	1122-007-1001	1124-007-1025
Clutch Drum	Order Sprocket Kit	Order Sprocket Kit	Order Sprocket Kit	Order Sprocket Kit	Order Sprocket Kit	Order Sprocket Kit	Order Sprocket Kit	Order Sprocket Kit	Order Sprocket Kit	Order Sprocket Kit	Order Sprocket Kit	Order Sprocket Kit
Rim Sprocket 3/8 - 8T	N/A	0000-642-1216	0000-642-1216	0000-642-1216	0000-642-1216	0000-642-1216	0000-642-1216	0000-642-1216	0000-642-1216	0000-642-1216	0000-642-1216	0000-642-1216
Clutch	1127-160-2050	1125-160-2005	1128-160-2004	1138-160-2010	1119-160-2000	1128-160-2001	1138-160-2010	1128-160-2004	1142-160-2000	1122-160-2005	1122-160-2002	1124-160-2005
Chain Adjuster Kit	1125-007-1036	1125-007-1021	1125-007-1021	1125-007-1021	1118-664-1600 1120-664-1500	1125-007-1021	1125-007-1021	1125-007-1021	1125-007-1021	1125-007-1021	1125-007-1021	1124-007-1008
Bump Strip	1121-648-6610	1121-648-6610	1121-648-6610	1121-648-6610	1121-648-6610	1121-648-6610	1121-648-6610	1121-648-6610	1121-648-6610	1121-648-6610	1121-648-6610	1121-648-6610
Starter Rope W/handle	1128-190-3400	1128-190-3400	1128-190-3400	1128-190-3400	1128-190-3400	1128-190-3400	1128-190-3400	1128-190-3400	1128-190-3400	1128-190-3400	1128-190-3400	1128-190-3400
Worm Gear (Oiler)	1125-640-7110	1125-640-7110	1128-640-7112	1128-640-7112	1119-642-1501	1128 640 7112	1128 640 7112	1128 640 7112	1128-640-7112	1122-640-7105	1122-640-7105	1124-640-7512
Manifold Boot	1125 141 2200	1125 141 2200	1135 141 2200	1140 140 2503	1119 140 2500	1128 141 2204	1138 140 2508	1128 141 2204	1142 141 2200	1122 141 2200	1122 141 2201	1124 141 2202

## TRESTLE CREEK COMPLEX FIRE MEDICAL PLAN

<b>71. Incident/Project Name</b>	<b>2. Operational Period</b>
Trestle Creek Complex Fire	Date/Time 08/30/2021, 0600-2200

3. Ambulance Services				
Name	Complete Address	Phone & EMS Frequency	Advanced Life Support (ALS)	
			Yes	No
Guardian Elite Medical E#88	2830 Ferne Drive. Building E Las Vegas, NV 89104	Lunch Peak CH 5	X	
Bonner County EMS	521 North 3 <sup>rd</sup> Ave Sandpoint ID	208-265-5525 / 911	X	
Kootenai County EMS	4381 W Seltice Way Coeur d'Alene ID	208-930-4224 / 911	X	

4. Air Ambulance Services		
Name	Phone	Type of Aircraft & Capability
Two Bear Air	406-758-5510 Request via Flathead Sheriff	Rotor, Hoist capable, Search and Rescue only
LifeFlight 83 or 15 or 41	800-232-0911	Rotor, ALS
Coeur d'Alene Dispatch	208-762-6906	3BH Short Haul- Yellowstone 2RF Agency Ship
Military Helicopter Support (Night Rotor operations)	1-800-851-3051	Rotor, Hoist and Short Haul Capable, Night Operations

**LZ for Air Ambulance will be Mud Creek Helibase 48° 19.501N -116° 10.109W**

A/G with Air Ambulance		
StateCom / EMS2	RX 155.2800 TX 155.2800	CH 13 EMS 2

5. Hospitals								
Name Complete Address	GPS Datum – WGS 84 Degrees Decimal Minutes DD° MM.MMM' N - Lat DD° MM.MMM' W - Long		Travel Time		Phone	Helipad		Level of Care Facility
	Lat:	Long:	Air	Ground		Yes	No	
Bonner General 520 N. 3 <sup>rd</sup> Ave Sandpoint, ID	Lat: N 48°16.674	Long: W -116°32.9939	15 minutes	45 minutes	208-265-1020	X		General
	VHF:							
Kootenai Medical Center 2003 Lincoln Way Coeur d'Alene	Lat: N 47°41.777	Long: W -116°47.630	20 minutes	60 minutes	208-666-3000	X		General
	VHF:							
Harborview Medical Center 325 9 <sup>th</sup> Ave Seattle, WA 98104	Lat: N 47°36.2377	Long: W -122°19.4462	120 minutes	6 hours	206-744-3074	X		Burn / Trauma
	VHF:							

6. Division   Branch   Group   Spike	
A	<b>EMS Responders &amp; Capability:</b> EMPF: Crownover (775) 251-8411
	<b>Equipment Available on Scene:</b> ALS, Pain & Airway management, Trauma, Back Board, AED
	<b>Medical Emergency Channel:</b> Lunch Peak CH5 (Coeur d'Alene Dispatch)
	<b>Air ETA to area:</b> 20 Minute
	<b>Ground ETA to DP27:</b> 60 Minute
	<b>Helispot:</b> H5
	<b>Latitude / Longitude</b> 48° 20.177'N -116.17.999° W

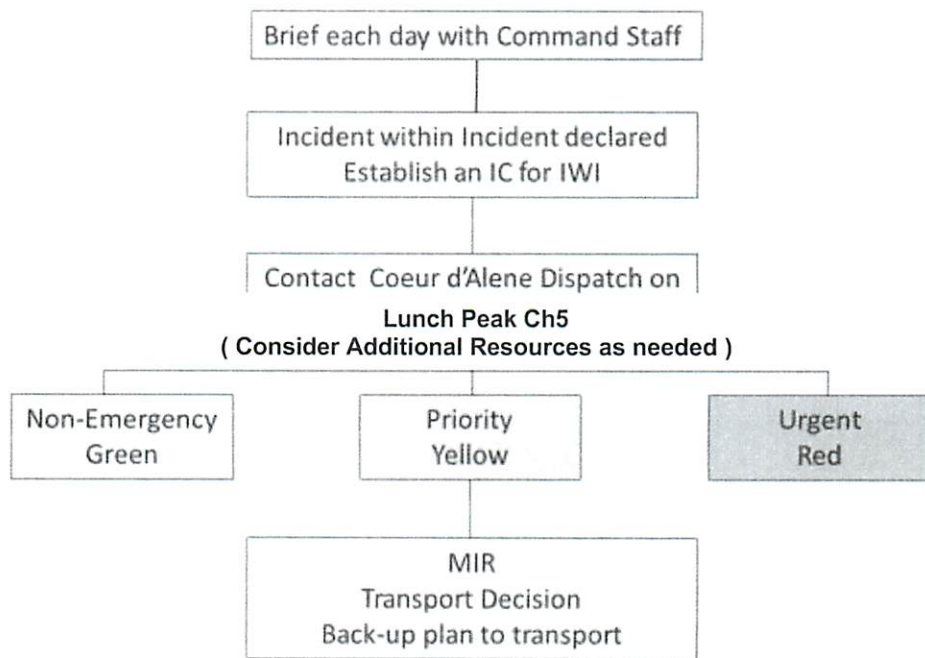
## TRESTLE CREEK COMPLEX FIRE MEDICAL PLAN

	<b>Primary Evacuation Route</b>	<b>Air</b> respond H5 (48° 20.117'N 116° 17.999W) <b>Ground</b> Trout Creek (FS232) (Approx. 45 mins)
	<b>Secondary Evacuation Route</b>	<b>Air:</b> H8 (48° 19.754'N 116° 16.446W) <b>Ground:</b> Trout Creek (FS232) (Approx. 45 min)
<b>Division   Branch   Group   Spike</b>		
<b>C</b>	<b>EMS Responders &amp; Capability:</b>	<b>EMPF:</b> Kochergin (650)430-0461
	<b>Equipment Available on Scene:</b>	BLS/ALS, Trauma, Airway, Pain management, back board, AED
	<b>Medical Emergency Channel:</b>	Lunch Peak (Coeur d'Alene Dispatch)
	<b>Air ETA to area:</b>	<b>10 Minute</b>
	<b>Ground ETA to area:</b>	<b>35 Minute</b>
	<b>Heli spot:</b>	H2
	<b>Latitude / Longitude</b>	<b>48° 22.554'N -116° 13.234W</b>
	<b>Primary Evacuation Route</b>	<b>Air:</b> respond to H12 (48° 22.554'N -116° 13.234W) H32 (48° 20.733'N -116° 13.790W) <b>Ground-</b> Trestle Creek Rd (Approx. 45 mins)
	<b>Secondary Evacuation Route</b>	<b>Air:</b> Respond to H12 (48° 22.554'N -116° 13.234W) H32 (48° 20.733'N -116° 13.790W) <b>Ground:</b> Lightning Creek Rd (Travel times vary/ approx. 45 min to 1.5 HR)
<b>Division   Branch   Group   Spike</b>		
<b>M</b>	<b>EMS Responders &amp; Capability:</b>	<b>EMPF:</b> Ozzy (805) 477-8568 / <b>EMTF:</b> Prescott Widly 303-582-4324
	<b>Equipment Available On Scene:</b>	ALS, Pain Management, Airway, back board, AED
	<b>Medical Emergency Channel:</b>	Lunch Peak (Coeur d'Alene Dispatch) Channel 5
	<b>Air ETA to Area:</b>	<b>10 minutes</b>
	<b>Ground ETA to Area</b>	<b>55 Minutes</b>
	<b>Heli Spot:</b>	H2
	<b>Latitude / Longitude:</b>	<b>48° 22.554N -116°13.234</b>
	<b>Primary Evacuation Route:</b>	<b>Air:</b> Respond to: Mud Creek Spike Camp (48°19.498N - 116° 10.108W) Spike Camp H24: (48° 18.567N -116° 12.148W) <b>Ground:</b> Lightning Creek Rd. (Travel times vary/ approx. 45 min)
	<b>Secondary Evacuation Route</b>	<b>Air:</b> Respond to H32 (48° 20.733'N -116° 13.790W) <b>Ground:</b> Trestle Creek Rd. (Travel times vary/ approx. 45 min to 1.5 hr)
<b>Division   Branch   Group   Spike</b>		
<b>W</b>	<b>EMS Responders &amp; Capability:</b>	<b>Ambulance:</b> EMTF: Peterson (774) 368-8603 <b>EMT:</b> Alejo
	<b>Equipment Available On Scene:</b>	ALS, Pain Management, Airway, back board, AED
	<b>Medical Emergency Channel:</b>	Lunch Peak (Coeur d'Alene Dispatch) Channel 5
	<b>Air ETA to Area:</b>	<b>10 minutes</b>
	<b>Ground ETA to Area</b>	<b>35 Minutes</b>
	<b>Heli Spot:</b>	H2
	<b>Latitude / Longitude:</b>	<b>48° 22.554N -116°13.234</b>
	<b>Primary Evacuation Route:</b>	<b>Air:</b> Respond to H32 (48° 20.733'N -116° 13.790 W) <b>Ground:</b> Trestle Creek Rd. (Travel times vary/ approx. 45 min)
	<b>Secondary Evacuation Route</b>	<b>Air:</b> Respond to H12 (48° 22.554'N -116° 13.234W) <b>Ground:</b> Lightning Creek Rd. (Travel times vary/ approx. 45 min to 1.5 hr)

# TRESTLE CREEK COMPLEX FIRE MEDICAL PLAN

\*\*Air/Ground Evacuation Sites will vary, to be determined by on scene medical and Division Supervisor personnel based on location and complexity of the incident.

## Medical Emergency Communication Procedures



1. Prepared By (Medical Unit Leader)	2. Date/Time	3. Reviewed by Safety Officer	4. Date/Time
Ravonn Simpson MEDL-T 626-755-7131	8/29/2021	<i>Wendy J. Hunt</i>	8/29/21 1633

**Incident:**  
TRESTLE CREEK COMPLEX

**Date:**  
8/30/2021

**Operational Period:**  
8/30/2021 day shift



## SAFETY MESSAGE



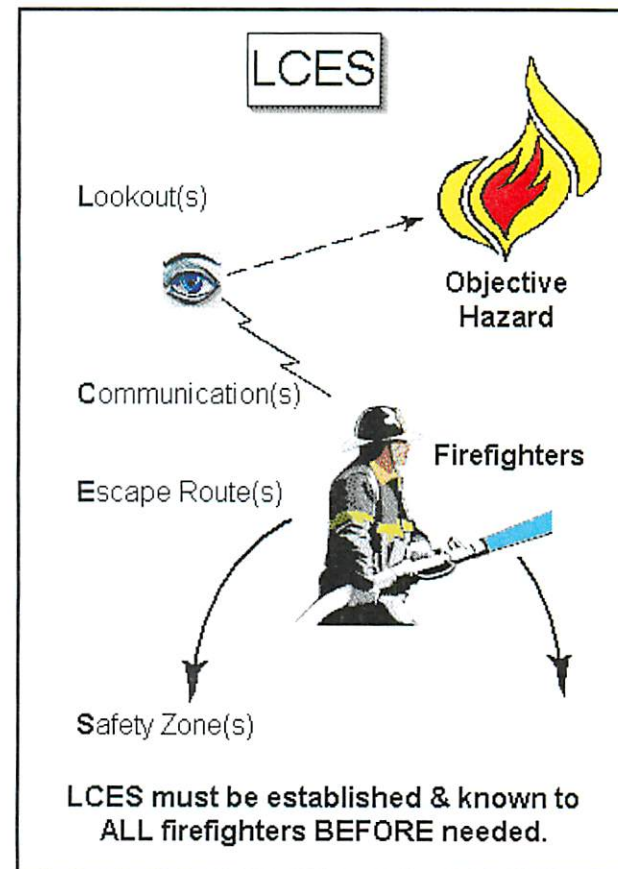
*Fire fighter safety comes first on every fire, every time*

### MAJOR HAZARDS AND RISKS

- |   |   |
|---|---|
| <ul style="list-style-type: none"><li>• Dehydration—Drink lots of water even with cooler temps</li><li>• Unable to see main fire</li><li>• Egress out of remote areas</li><li>• Smoke</li><li>• Complacency</li></ul> | <ul style="list-style-type: none"><li>• Driving and backing on narrow, washboard mountain roads.</li><li>• Lights, Seatbelts, Windshields</li><li>• Rocky, rough terrain--falls/slips</li><li>• SNAGS!!!! Rolling Rocks!!</li><li>• Bears- Keep spike camps clean and food/ bear attracting items away from sleeping areas.</li></ul> |
|---|---|

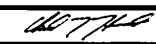
***LCES Establish and continually evaluate LCES during the day.***

***Before engaging ensure LCES Is effective.***



*Safety Officers*  
*Chad Holbert (t)*

## INCIDENT ACTION PLAN SAFETY ANALYSIS (ICS 215A)

<b>1. Incident Name:</b> Trustle Creek Complex		<b>2. Incident Number:</b> ID-IPF-000452	
<b>3. Date/Time Prepared:</b> Date: 8/29/21      Time: 12:00		<b>4. Operational Period:</b> Date From: 08/30/21    Date To: 08/30/21 Time From: 0600      Time To: 2200	
<b>5. Incident Area</b>	<b>6. Hazards/Risks</b>	<b>7. Mitigations</b>	
Entire Incident	Driving	Please slow down and observe the posted speed limits. Watch for washouts on roads if you see one flag it.	
Entire Incident	Windshields and mirrors	Please keep windshields and mirrors clean at all times to increase visibility.	
Entire Incident	Bees	Please be aware of bees around camp and the fireline. Report any allergic reactions to supervisor.	
Entire Incident	Headlights	Please use headlights when visibility is poor due to time of day, smoke, weather or any other events.	
Fireline	Snags	Watch for snags on the fireline. Please report any unsafe snags to your supervisor. The forest has the ability to blast any snags.	
Fireline	Rolling Debris	Please keep a heads-up for any rolling debris. Notify nearby crews below of rolling debris.	
Entire Incident	Pedestrians	Please be aware of pedestrians in the area of fire camp and roads leading to the fireline.	
Entire Incident	Hand washing	Please remember to wash your hands often. This will help prevent the spread of COVID, "camp crud" and other illnesses.	
Entire Incident	Bears	Please be aware of bears in camp and around the fire line. Please keep food and other bear attractive items out of tents. Use	
Fireline	Bucket Drops	Be heads-up when helicopters are working in the area. Helicopter pilots have limited visibility into the canopy.	
Entire Incident	Bear Spray	Bear spray can be issued with the proper training. Please get with your supervisor or division to request this training.	
<b>8. Prepared by (Safety Officer):</b> Name: <u>Chad Holbert-SOFR (T)</u> Signature: <u></u>			
<b>Prepared by (Operations Section Chief):</b> Name: <u>Anthony Perez</u> Signature: _____			
<b>ICS 215A</b>		Date/Time: <u>August 30, 2021 13:00</u>	

## Medical Incident Report – 8 Line

FOR A NON-EMERGENCY INCIDENT, WORK THROUGH CHAIN OF COMMAND TO REPORT AND TRANSPORT INJURED PERSONNEL AS NECESSARY.

FOR A MEDICAL EMERGENCY: IDENTIFY ON SCENE INCIDENT COMMANDER BY NAME AND POSITION AND ANNOUNCE "MEDICAL EMERGENCY" TO INITIATE RESPONSE FROM IMT COMMUNICATIONS/DISPATCH.

**Use the following items to communicate situation to communications/dispatch.**

**1. CONTACT COMMUNICATIONS / DISPATCH** (Verify correct frequency prior to starting report)

*Ex: "Communications, Div. Alpha Stand-by for Emergency Traffic."*

**2. INCIDENT STATUS:** Provide incident summary (including number of patients) and command structure.

*Ex: "Communications, I have a Red priority patient, unconscious, struck by a falling tree. Requesting air ambulance to Forest Road 1 at (Lat./Long.) This will be the Trout Meadow Medical, IC is TFLD Jones. EMT Smith is providing medical care."*

Severity of Emergency / Transport Priority	<input type="checkbox"/> <b>RED / PRIORITY 1</b> Life or limb threatening injury or illness. Evacuation need is IMMEDIATE <i>Ex: Unconscious, difficulty breathing, bleeding severely, 2° – 3° burns more than 4 palm sizes, heat stroke, disoriented.</i> <input type="checkbox"/> <b>YELLOW / PRIORITY 2</b> Serious Injury or illness. Evacuation may be DELAYED if necessary. <i>Ex: Significant trauma, unable to walk, 2° – 3° burns not more than 1-3 palm sizes.</i> <input type="checkbox"/> <b>GREEN / PRIORITY 3</b> Minor Injury or illness. Non-Emergency transport <i>Ex: Sprains, strains, minor heat-related illness.</i>	
Nature of Injury or Illness & Mechanism of Injury		<i>Brief Summary of Injury or Illness (Ex: Unconscious, Struck by Falling Tree)</i>
Transport Request		<i>Air Ambulance / Short Haul/Hoist Ground Ambulance / Other</i>
Patient Location		<i>Descriptive Location &amp; Lat. / Long. (WGS84)</i>
Incident Name		<i>Geographic Name + "Medical" (Ex: Trout Meadow Medical)</i>
On-Scene Incident Commander		<i>Name of on-scene IC of Incident within an Incident (Ex: TFLD Jones)</i>
Patient Care		<i>Name of Care Provider (Ex: EMT Smith)</i>

**3. INITIAL PATIENT ASSESSMENT:** Complete this section for each patient as applicable (start with the most severe patient)

Patient Assessment:  
See IRPG page 106

Treatment:

**4. TRANSPORT PLAN:**

Evacuation Location (if different): (Descriptive Location (drop point, intersection, etc.) or Lat. / Long.) Patient's ETA to Evacuation Location:

Helispot / Extraction Site Size and Hazards:

**5. ADDITIONAL RESOURCES / EQUIPMENT NEEDS:**

*Example: Paramedic/EMT, Crews, Immobilization Devices, AED, Oxygen, Trauma Bag, IV/Fluid(s), Splints, Rope rescue, Wheeled litter, HAZMAT, Extrication*

**6. COMMUNICATIONS: Identify State Air/Ground EMS Frequencies and Hospital Contacts as applicable**

Function	Channel Name/Number	Receive (RX)	Tone/NAC *	Transmit (TX)	Tone/NAC *
COMMAND					
AIR-TO-GRND					
TACTICAL					

**7. CONTINGENCY:** *Considerations: If primary options fail, what actions can be implemented in conjunction with primary evacuation method? Be thinking ahead.*

**8. ADDITIONAL INFORMATION:** *Updates/Changes, etc.*

**REMEMBER:** Confirm ETA's of resources ordered. Act according to your level of training. Be Alert. Keep Calm. Think Clearly. Act Decisively.

