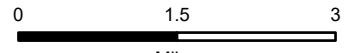


-116°40' -116°39' -116°38' -116°37' -116°36' -116°35' -116°34' -116°33' -116°32' -116°31' -116°30' -116°29' -116°28' -116°27' -116°26' -116°25' -116°24' -116°23' -116°22' -116°21' -116°20' -116°19' -116°18' -116°17' -116°16' -116°15' -116°14' -116°13' -116°12' -116°11' -116°10' -116°9' -116°8'

# Air Operations

Trestle Creek Complex  
 IDIPF-000452  
 6180 acres  
 8/19/2021 Day

Fire perimeter updated from  
 Acres from IR + GPS on 08/18/2021 2005



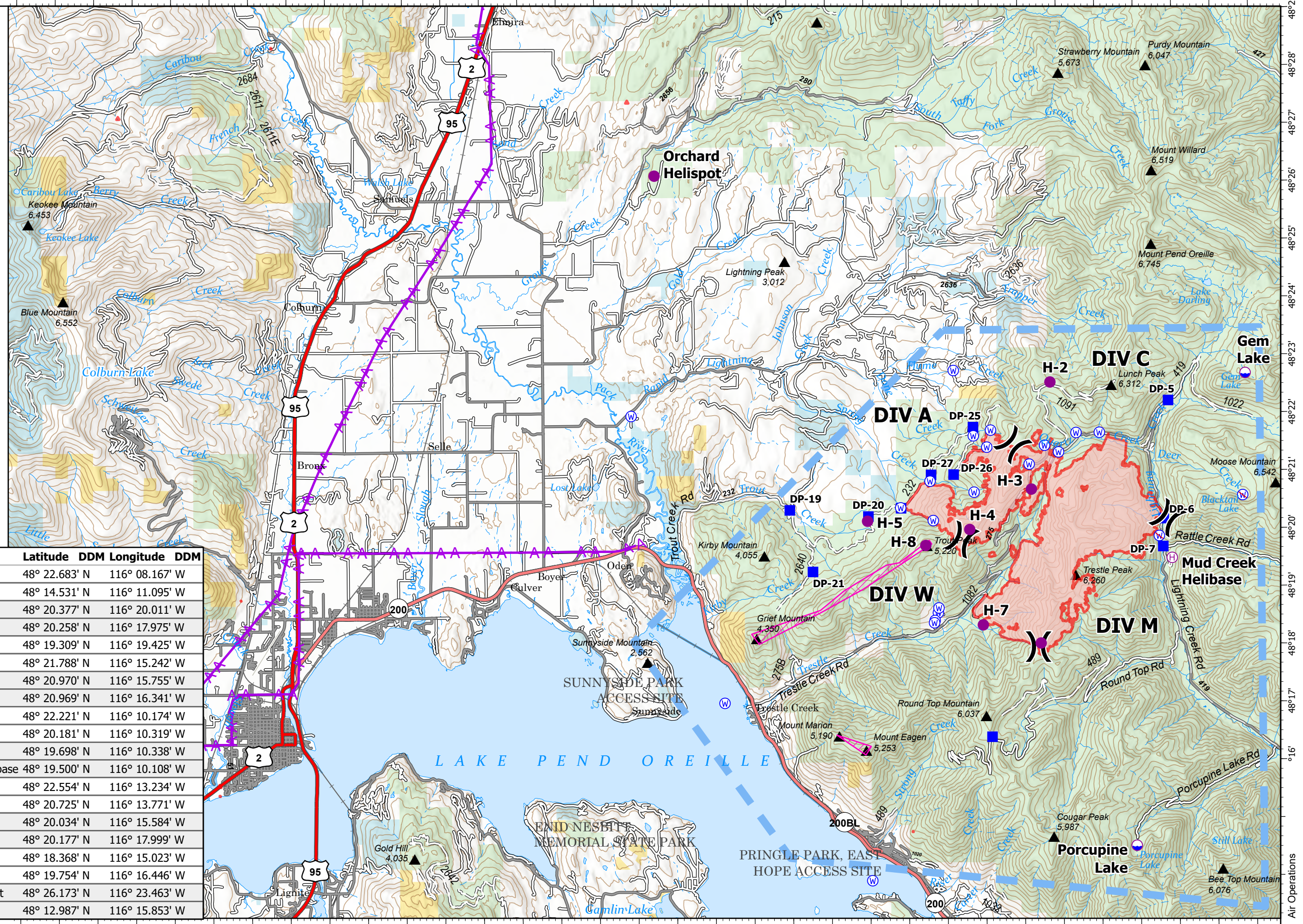
1 inch equals 22 miles Scale: 1:115,000



- Dip Site
- Helispot
- Helibase
- Division Break
- Drop Point
- Water Source
- Restricted Water Source
- Aerial Hazard
- Temporary Flight Restriction
- Retardant Avoidance
- Wildfire Daily Fire Perimeter

Remote Incident Support Team  
 8/20/2021 0913  
 North American 1983  
 Datum: LatLong Grid

Point Type	Name	Latitude DDM	Longitude DDM
Dip Site	Gem Lake	48° 22.683' N	116° 08.167' W
Dip Site	Porcupine Lake	48° 14.531' N	116° 11.095' W
Drop Point	DP-19	48° 20.377' N	116° 20.011' W
Drop Point	DP-20	48° 20.258' N	116° 17.975' W
Drop Point	DP-21	48° 19.309' N	116° 19.425' W
Drop Point	DP-25	48° 21.788' N	116° 15.242' W
Drop Point	DP-26	48° 20.970' N	116° 15.755' W
Drop Point	DP-27	48° 20.969' N	116° 16.341' W
Drop Point	DP-5	48° 22.221' N	116° 10.174' W
Drop Point	DP-6	48° 20.181' N	116° 10.319' W
Drop Point	DP-7	48° 19.698' N	116° 10.338' W
Helibase	Mud Creek Helibase	48° 19.500' N	116° 10.108' W
Helispot	H-2	48° 22.554' N	116° 13.234' W
Helispot	H-3	48° 20.725' N	116° 13.771' W
Helispot	H-4	48° 20.034' N	116° 15.584' W
Helispot	H-5	48° 20.177' N	116° 17.999' W
Helispot	H-7	48° 18.368' N	116° 15.023' W
Helispot	H-8	48° 19.754' N	116° 16.446' W
Helispot	Orchard Helispot	48° 26.173' N	116° 23.463' W
Incident Command Post ICP		48° 12.987' N	116° 15.853' W



-116°40' -116°39' -116°38' -116°37' -116°36' -116°35' -116°34' -116°33' -116°32' -116°31' -116°30' -116°29' -116°28' -116°27' -116°26' -116°25' -116°24' -116°23' -116°22' -116°21' -116°20' -116°19' -116°18' -116°17' -116°16' -116°15' -116°14' -116°13' -116°12' -116°11' -116°10' -116°9' -116°8'

Air Operations