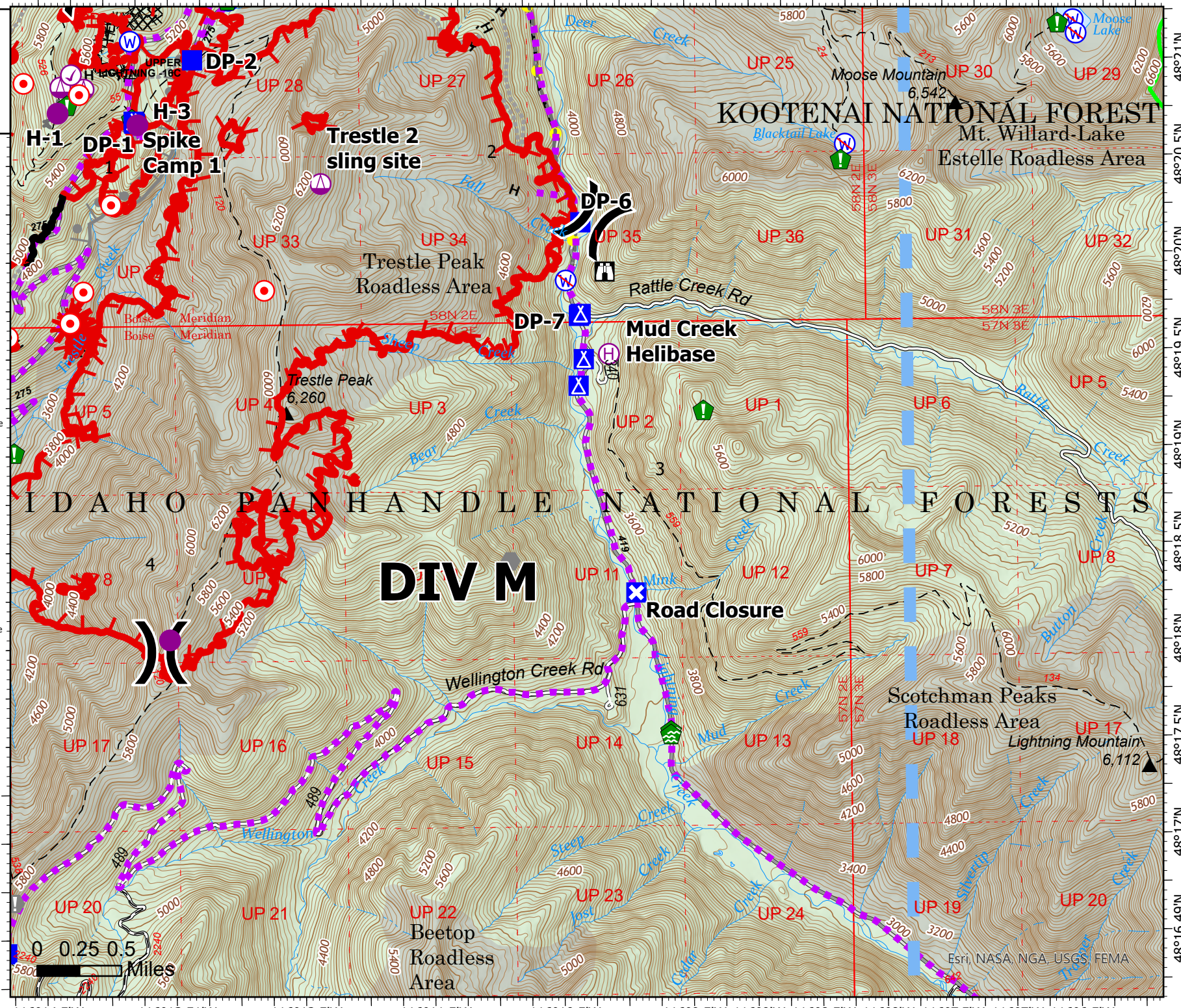


116°14.5'W 116°13.51'W 116°12.5'W 116°11.5'W 116°10.5'W 116°9.5'W 116°9'W 116°8.5'W 116°8'W 116°7.5'W 116°7'W 116°6.5'W

Operations

Trestle Creek Complex
IDIPF-000452
08/20/2021 Day
6180 acres at 08/18/2021 2005

- Check Point
- Helispot
- Helibase
- Sling Site
- Division Break
- Drop Point
- Closure
- Camp
- Staging Area
- Lookout
- Hot Spot - Spot Fire
- Value at Risk
- Other
- Water Development or Draft Site
- Resource Location
- Culvert
- Clean Up Area
- Water Source
- Restricted Water Source
- Completed Dozer Line
- Completed Hand Line
- Completed Road as Line
- Planned Burnout
- Planned Mixed Construction Line
- Planned Secondary Line
- Highlighted Feature
- Other
- Route
- Temporary Flight Restriction
- Fire Edge
- Contained Line



W N E S

Krang
8/20/2021 1031

0 0.25 0.5 Miles

116°14.5'W 116°13.51'W 116°12.5'W 116°11.5'W 116°10.5'W 116°9.5'W 116°9'W 116°8.5'W 116°8'W 116°7.5'W 116°7'W 116°6.5'W

48°21'N
48°20.5'N
48°20'N
48°19.5'N
48°19'N
48°18.5'N
48°18'N
48°17.5'N
48°17'N
48°16.49'N

Esri, NASA, NGA, USGS, FEMA