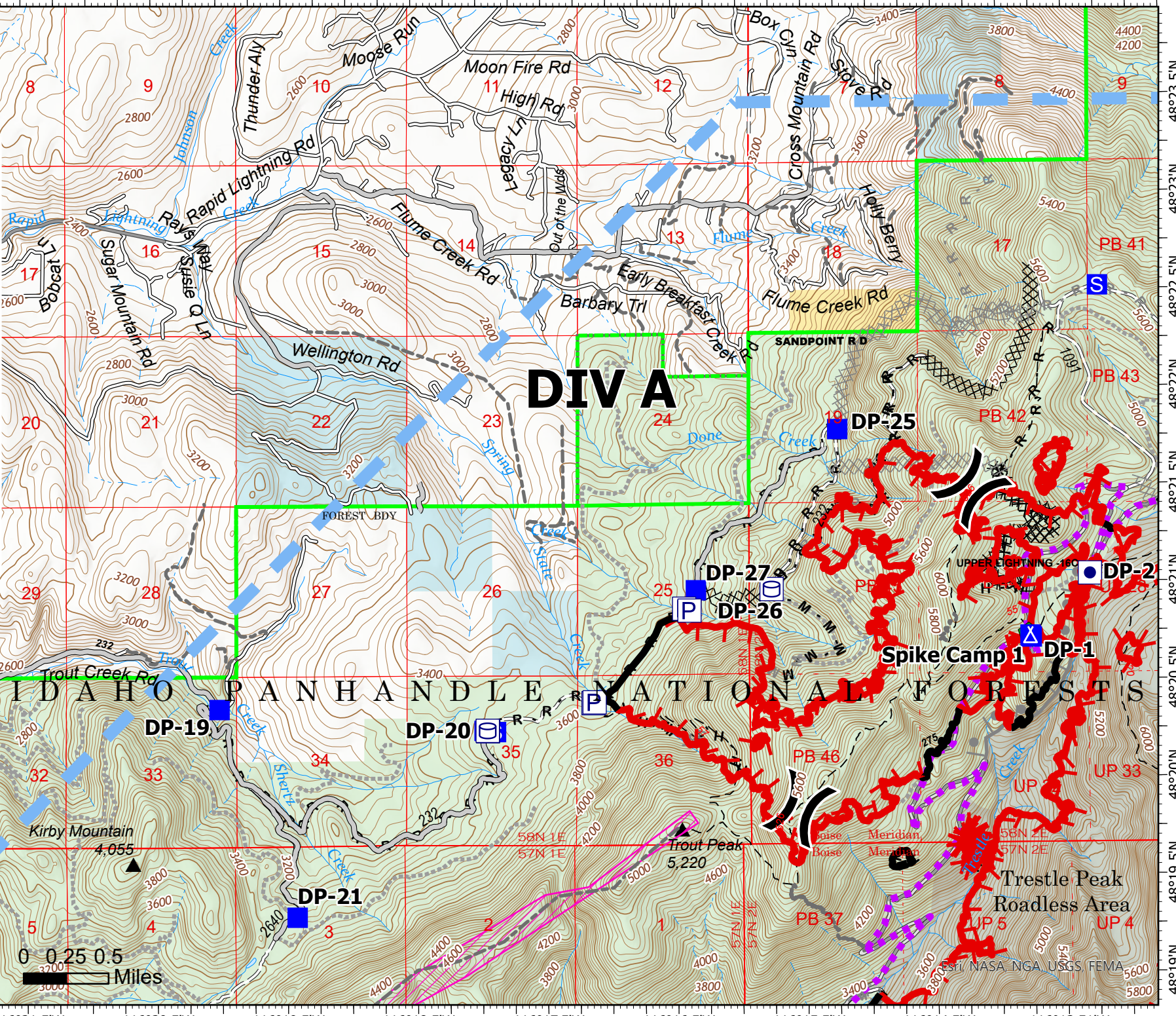


116°21.5'W 116°20.5'W 116°19.5'W 116°18.5'W 116°17.5'W 116°16.5'W 116°15.5'W 116°14.5'W 116°13.51'W

Operations

Trestle Creek Complex
IDIPF-000452
08/22/2021 Day
6180 acres at 08/18/2021 2005

- () Division Break
- Drop Point
- ▲ Camp
- Staging Area
- Clean Up Area
- ⊗ Completed Dozer Line
- ⊗ Completed Hand Line
- M Completed Mixed Construction Line
- R Completed Road as Line
- Planned Burnout
- ⊗ Planned Dozer Line
- H Planned Hand Line
- M Planned Mixed Construction Line
- R Planned Road as Line
- Access or Improved Road
- Highlighted Feature
- Other
- Route
- Temporary Flight Restriction
- Fire Edge
- Contained Line



W N E
S

Krang
8/22/2021 0552

0 0.25 0.5 Miles

116°21.5'W 116°20.5'W 116°19.5'W 116°18.5'W 116°17.5'W 116°16.5'W 116°15.5'W 116°14.5'W 116°13.51'W

48°23.5'N
48°23'N
48°22.5'N
48°22'N
48°21.5'N
48°21'N
48°20.5'N
48°20'N
48°19.5'N
48°19'N