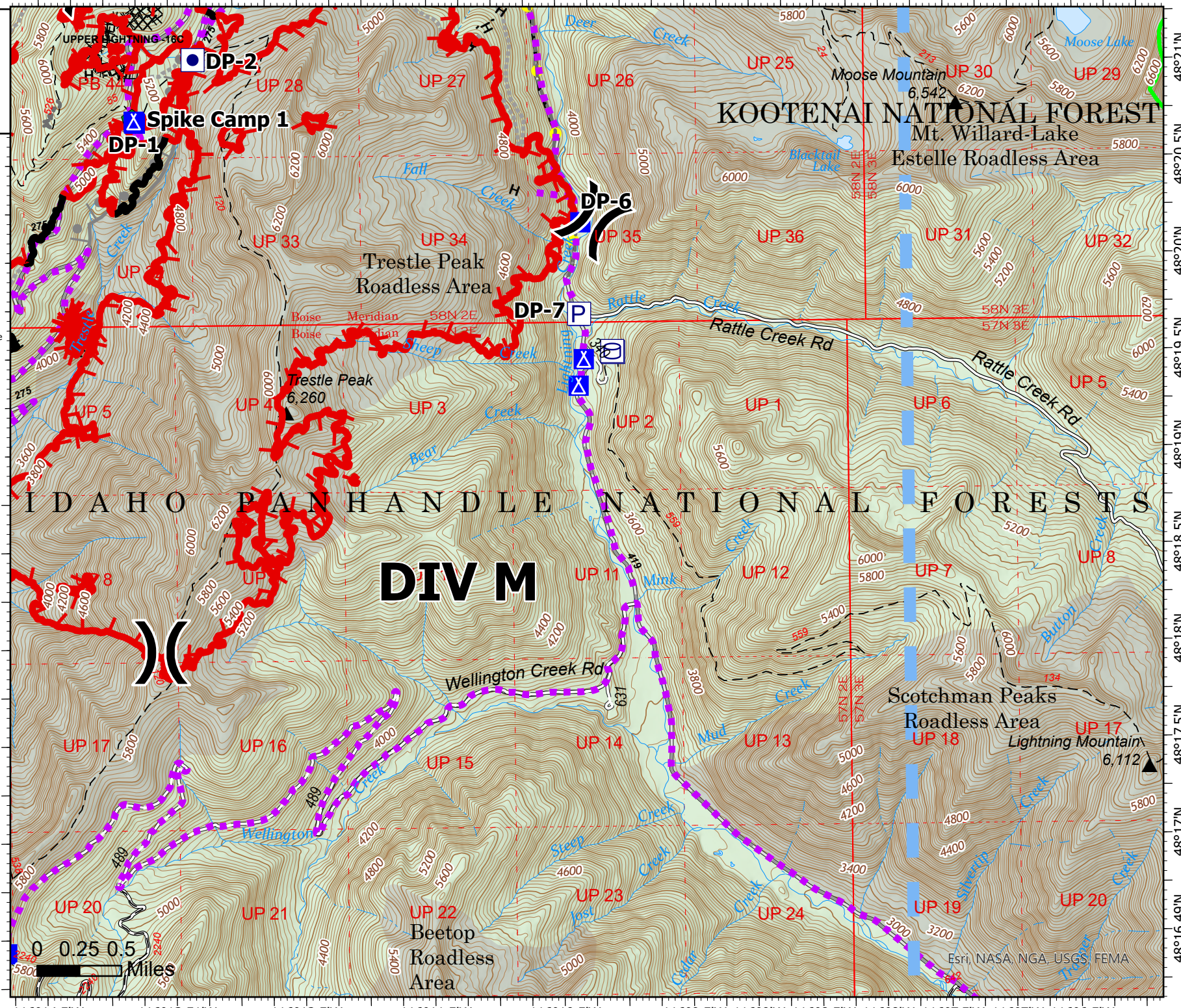


116°14.5'W 116°13.51'W 116°12.5'W 116°11.5'W 116°10.5'W 116°9.5'W 116°9'W 116°8.5'W 116°8'W 116°7.5'W 116°7'W 116°6.5'W

Operations

Trestle Creek Complex
IDIPF-000452
08/22/2021 Day
6180 acres at 08/18/2021 2005

- () Division Break
- Drop Point
- ▲ Camp
- Staging Area
- Clean Up Area
- ⊗ Completed Dozer Line
- H Completed Hand Line
- R Completed Road as Line
- Planned Burnout
- M Planned Mixed Construction Line
- S Planned Secondary Line
- Highlighted Feature
- Other
- Route
- Temporary Flight Restriction
- Fire Edge
- Contained Line



W N E S



Krang
8/22/2021 0553

0 0.25 0.5 Miles