

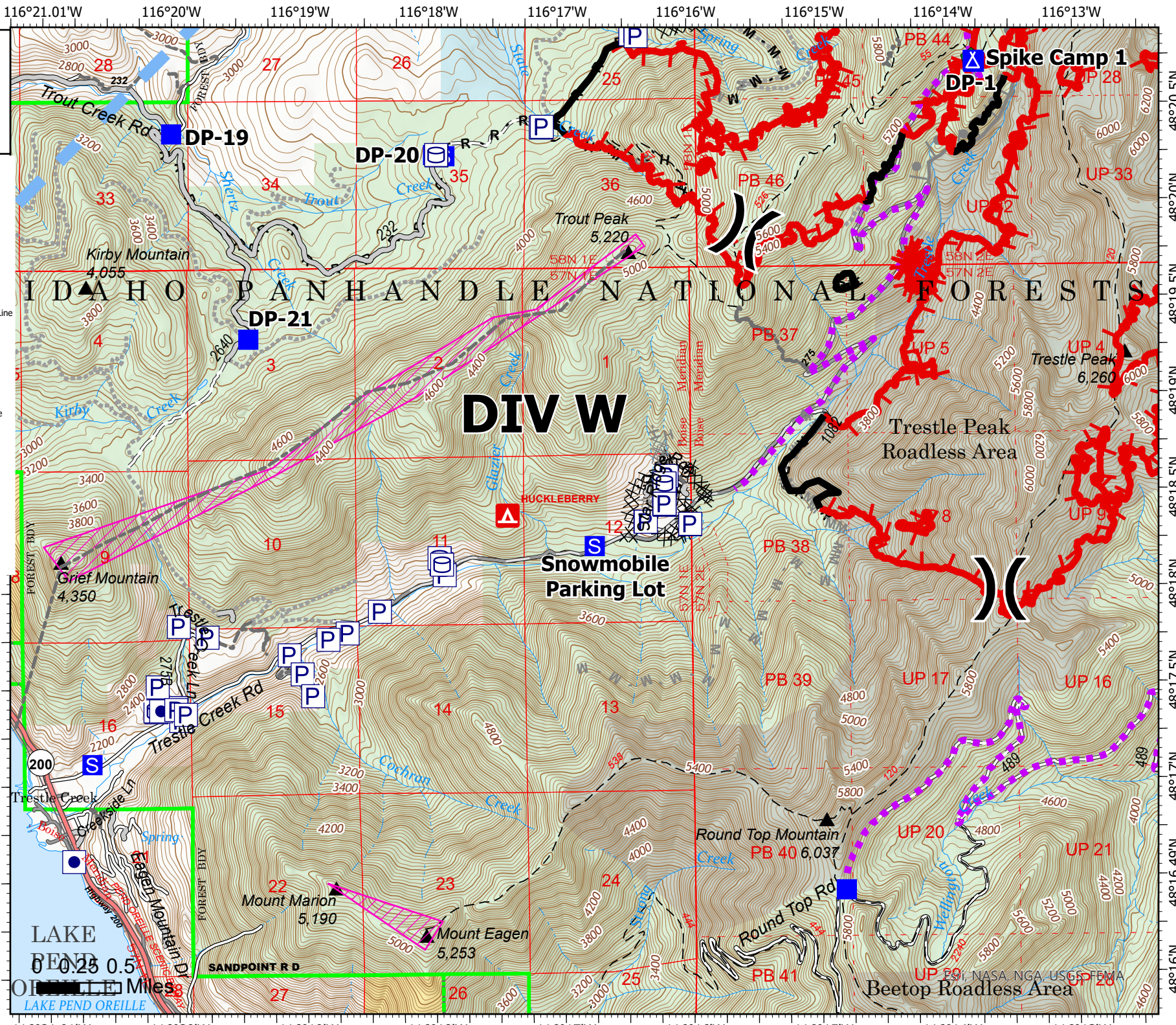
# Operations

Trestle Creek Complex  
IDIPF-000452  
08/22/2021 Day  
6180 acres at 08/18/2021 2005

- ( ) Division Break
- Drop Point
- ▲ Camp
- Staging Area
- 🗑️ Clean Up Area
- ⊗ Completed Dozer Line
- H Completed Hand Line
- M Completed Mixed Construction Line
- R Completed Road as Line
- Planned Burnout
- ⊗ Planned Dozer Line
- H Planned Hand Line
- M Planned Mixed Construction Line
- Access or Improved Road
- - - Other
- Route
- Temporary Flight Restriction
- Fire Edge
- Contained Line
- State Primary Route



Krang  
8/22/2021 0553



116°21.01'W 116°20'W 116°19'W 116°18'W 116°17'W 116°16'W 116°15'W 116°14'W 116°13'W

48°16'N 48°16.49'N 48°17'N 48°17.5'N 48°18'N 48°18.5'N 48°19'N 48°19.5'N 48°20'N 48°20.5'N

LAKE PEND OREILLE 0.5 Miles

LAKE PEND OREILLE

Beetop Roadless Area

ROUND TOP RD

SANDPOINT RD

TRUSTEES

USGS FEMA