

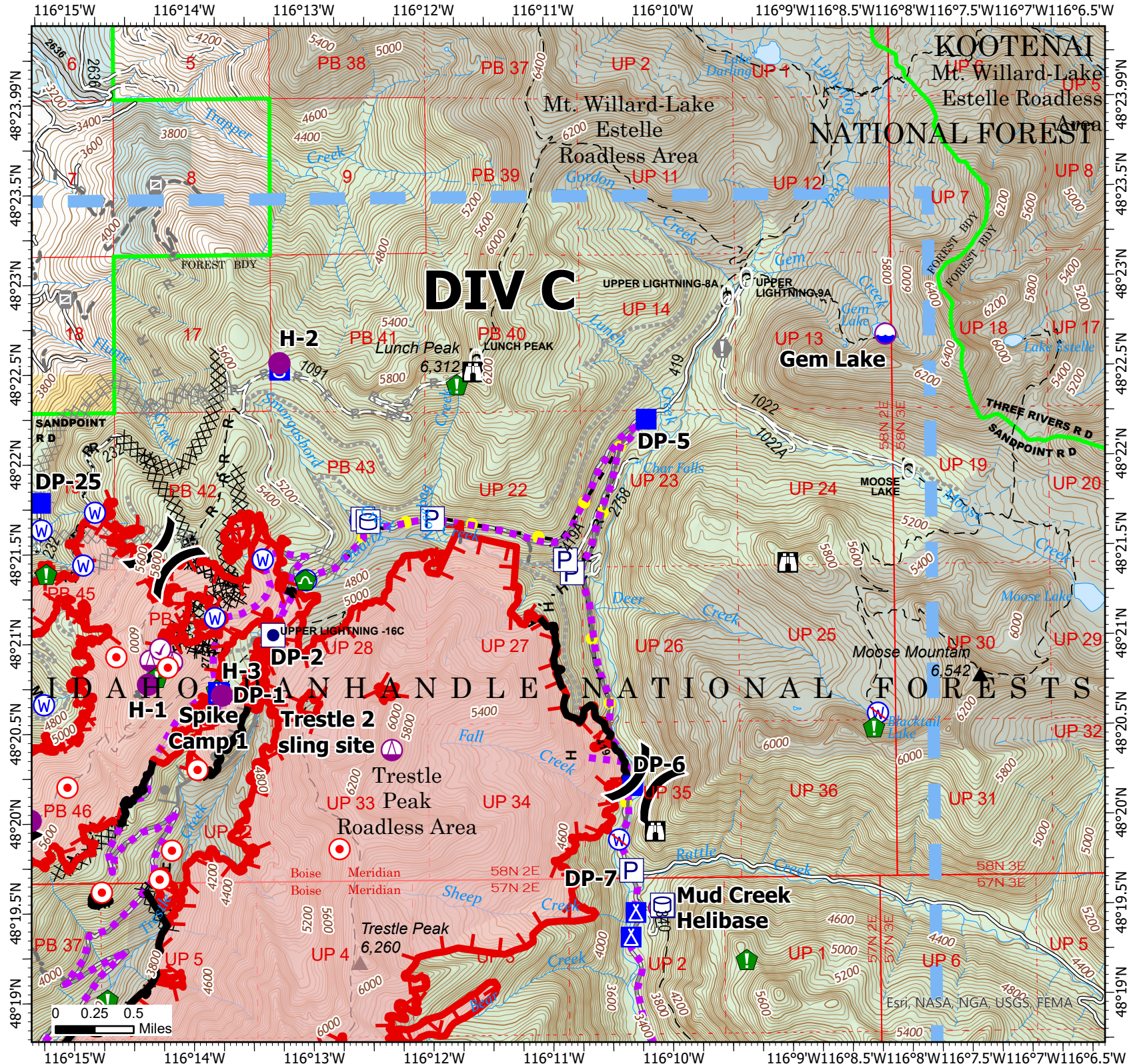
Operations

Trestle Creek Complex
IDIPF-000452
6600 acres at 8/23/2021
08/24/2021

- ✓ Check Point
- ⊙ Dip Site
- Helispot
- ⊕ Helibase
- ⊕ Sling Site
- ⌋ Division Break
- Drop Point
- ⊕ Camp
- ⊕ Staging Area
- ⊕ Lookout
- ⊙ Hot Spot - Spot Fire
- ⊕ Value at Risk
- ⊕ Gate
- ⊕ Structure Wrap
- ⊕ Resource Location
- ⊕ Culvert
- ⊕ Clean Up Area
- ⊕ Water Source
- ⊕ Restricted Water Source
- ⊕ Other Property
- ⊕ Pump
- ⊕ Water Tank
- ⊕ Completed Dozer Line
- ⊕ Completed Hand Line
- ⊕ Completed Mixed Construction Line
- ⊕ Completed Road as Line
- ⊕ Planned Burnout
- ⊕ Planned Dozer Line
- ⊕ Planned Fuel Break
- ⊕ Planned Mixed Construction Line
- ⊕ Planned Road as Line
- ⊕ Planned Secondary Line
- ⊕ Access or Improved Road
- ⊕ Highlighted Feature
- ⊕ Other



B. Krausmann
8/24/2021 1236
Acres from IR 8/23/2021 @ 2205
PDT
North American 1983 Datum.
LatLong Grid



Esri, NASA, NGA, USGS, FEMA