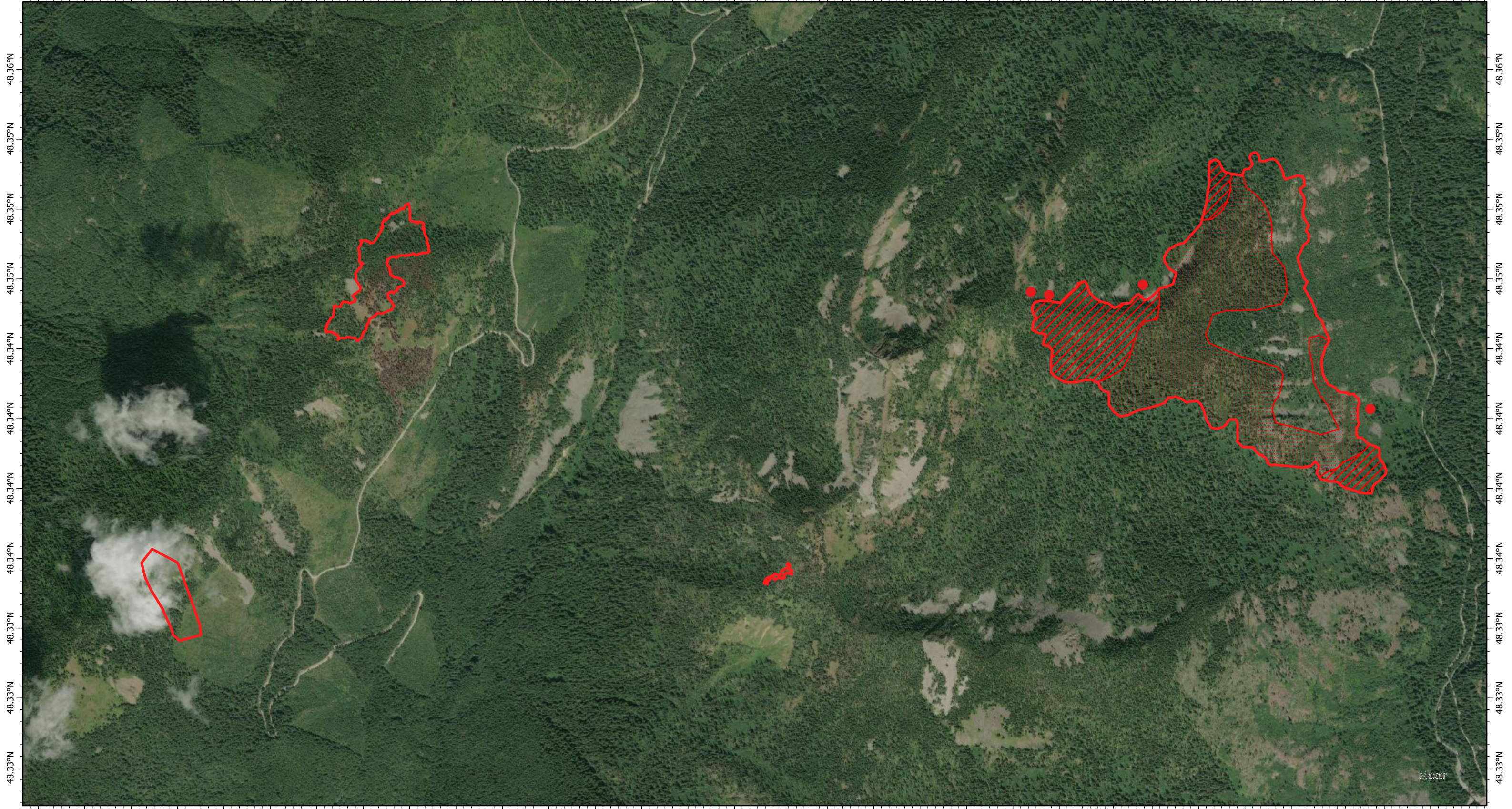


116.26°W 116.26°W 116.25°W 116.25°W 116.25°W 116.24°W 116.24°W 116.24°W 116.24°W 116.23°W 116.23°W 116.23°W 116.23°W 116.22°W 116.22°W 116.22°W 116.21°W 116.21°W 116.21°W 116.21°W 116.2°W 116.2°W 116.2°W 116.2°W 116.19°W 116.19°W 116.19°W 116.19°W 116.18°W 116.18°W 116.18°W 116.17°W 116.17°W



116.26°W 116.26°W 116.25°W 116.25°W 116.25°W 116.24°W 116.24°W 116.24°W 116.24°W 116.23°W 116.23°W 116.23°W 116.23°W 116.22°W 116.22°W 116.22°W 116.21°W 116.21°W 116.21°W 116.21°W 116.2°W 116.2°W 116.2°W 116.2°W 116.19°W 116.19°W 116.19°W 116.19°W 116.18°W 116.18°W 116.18°W 116.17°W 116.17°W

Trestle Creek Complex Fire IR Map
ID-IPF-000452

Wednesday, 14 July 2021, 2120 PDT
298 Interpreted Acres

Scale: 1:24,000
Projection: WGS 1984
Produced by: Owyhee Air Research, LLC
IR Interpreter: C. Holley
Contact: fire@owyheear.com (208) 442-5405

Legend

- Isolated Heat
- Burn Perimeter
- Intense Heat
- Scattered Heat

