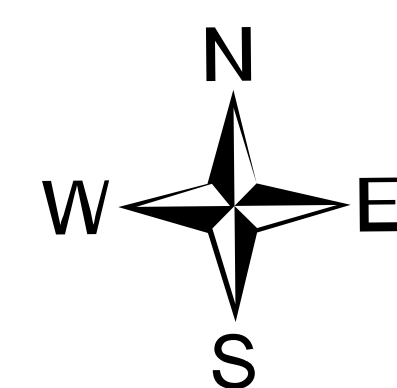
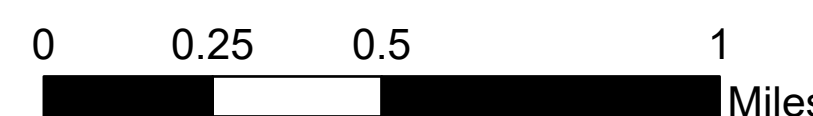


Operations

Trestle Creek Complex
IDIPF-000452
08/05/2021 Day

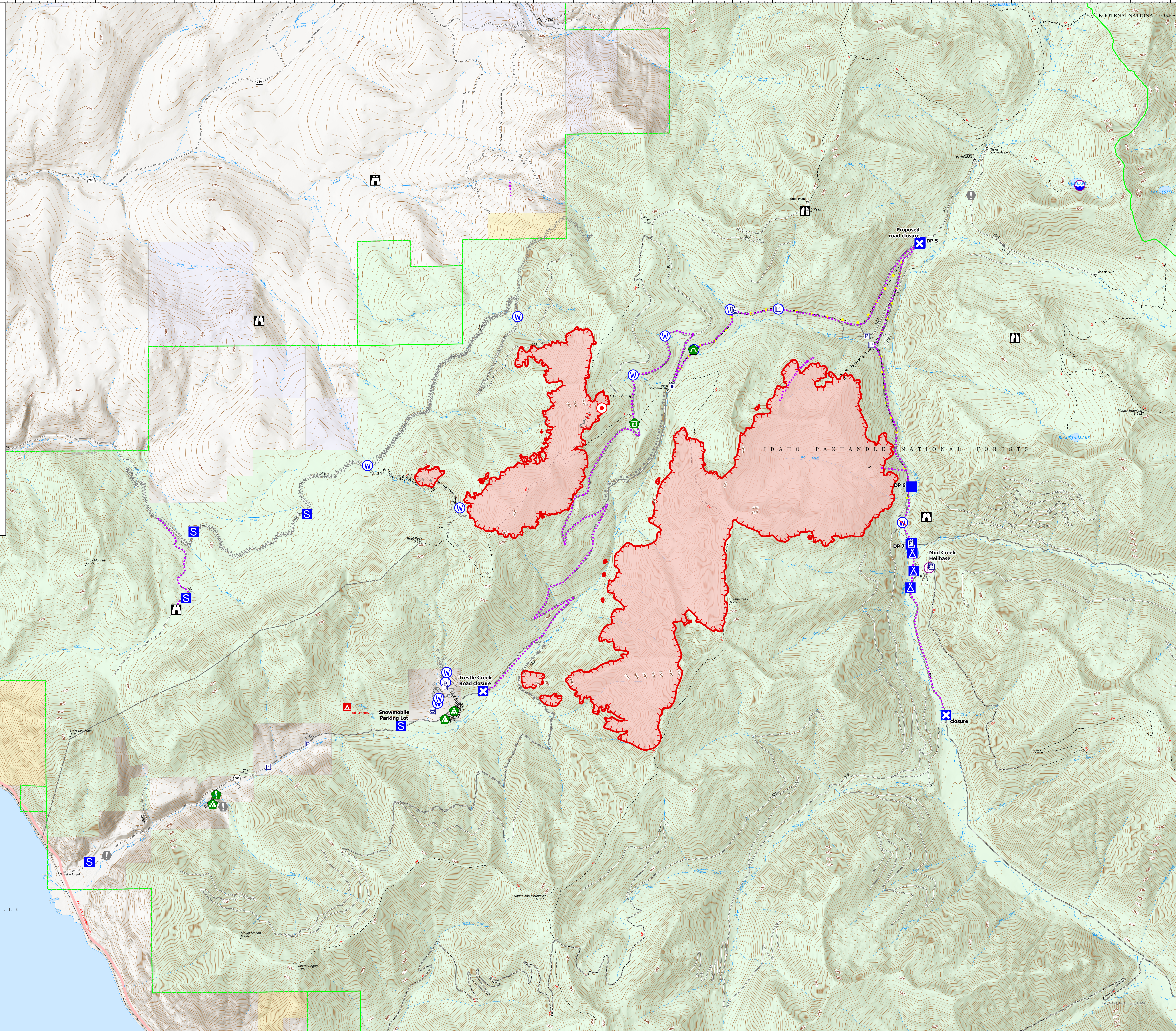
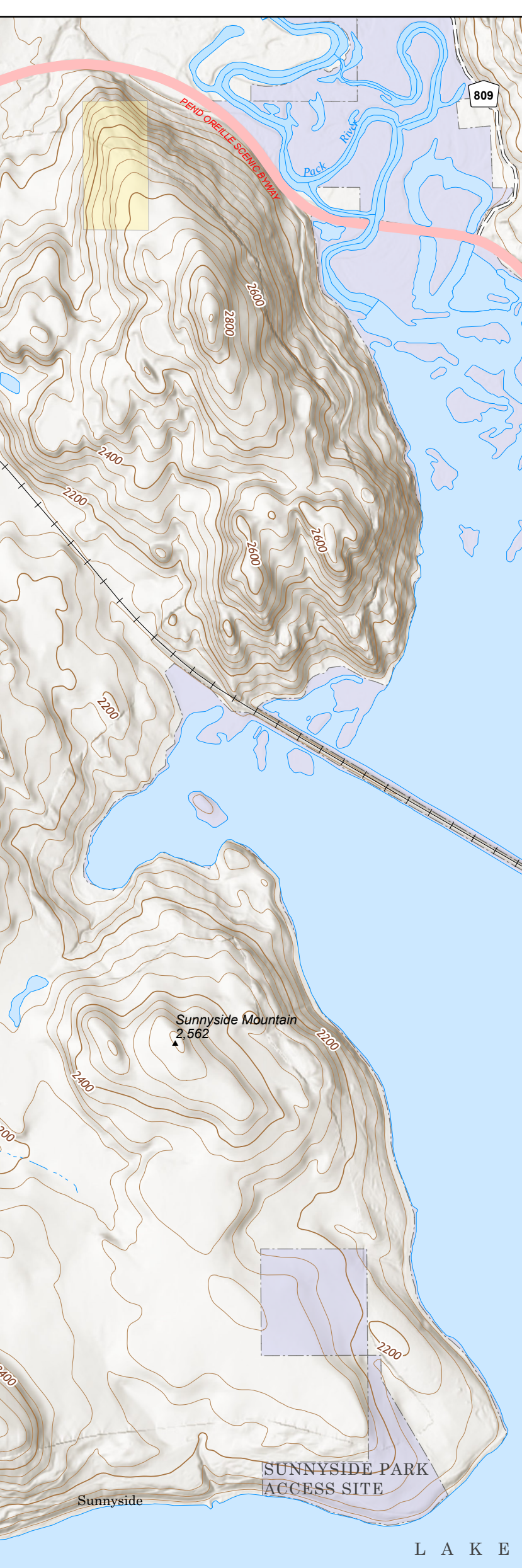
3425 acres at 08/01/2021 2008



- Dip Site
- Helibase
- Drop Point
- Closure
- Camp
- Staging Area
- Lookout
- Hot Spot - Spot Fire
- Value at Risk
- Structure Wrap
- Resource Location
- Landing or Log Deck
- Culvert
- Clean Up Area
- Water Source
- Restricted Water Source
- Completed Dozer Line
- Completed Hand Line
- Completed Road as Line
- Planned Burnout
- Planned Dozer Line
- Planned Fuel Break
- Planned Hand Line
- Planned Mixed Construction Line
- Planned Road as Line
- Planned Secondary Line
- Access or Improved Road
- Highlighted Feature
- Other
- Route
- Fire Edge
- Wildfire Daily Fire Perimeter
- Other Property
- Pump
- Water Tank
- Campground
- Trailhead
- Forest Service Land
- State Public Lands
- Other State Lands
- Bureau of Land Management Lands



adunckel
8/4/2021 2045
Acres from IR
North American 1983 Datum, Lat/Long Grid



116°24'W 116°23.5'W 116°23'W 116°22.5'W 116°22'W 116°21.5'W 116°21.01'W 116°20.5'W 116°20'W 116°19.5'W 116°19'W 116°18.5'W 116°18'W 116°17.5'W 116°17'W 116°16.5'W 116°16'W 116°15.5'W 116°15'W 116°14.5'W 116°14'W 116°13.51'W 116°13'W 116°12.5'W 116°12'W 116°11.5'W 116°11'W 116°10.5'W 116°10'W 116°9.5'W 116°9'W 116°8.5'W 116°8'W 116°7.5'W

48°23.99'N 48°23.5'N 48°23'N 48°22.5'N 48°22'N 48°21.5'N 48°21'N 48°20.5'N 48°20'N 48°19.5'N 48°19'N 48°18.5'N 48°18'N 48°17.5'N 48°17'N 48°16.49'N 48°16'N

48°23.99'N 48°23.5'N 48°23'N 48°22.5'N 48°22'N 48°21.5'N 48°21'N 48°20.5'N 48°20'N 48°19.5'N 48°19'N 48°18.5'N 48°18'N 48°17.5'N 48°17'N 48°16.49'N 48°16'N