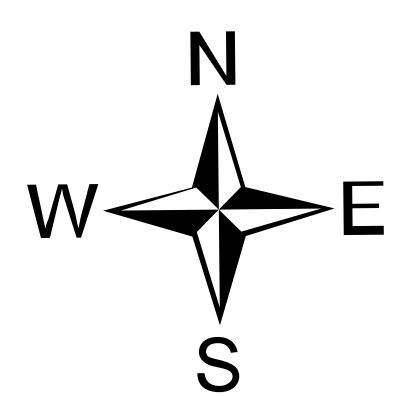
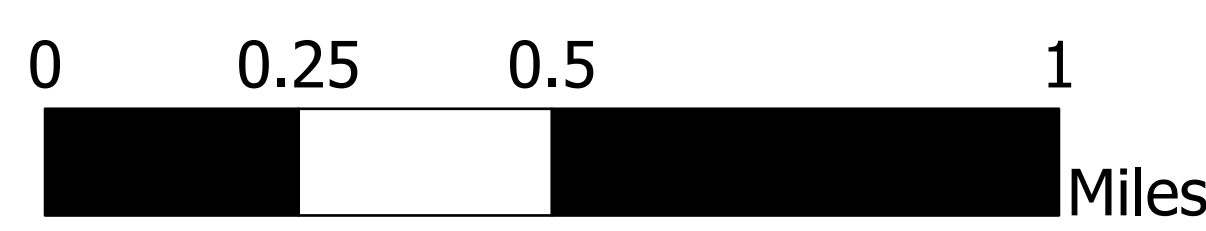


Briefing

Trestle Creek Complex
IDIPF-000452
08/10/2021 Day



3735 acres on 08/08/2021 2025

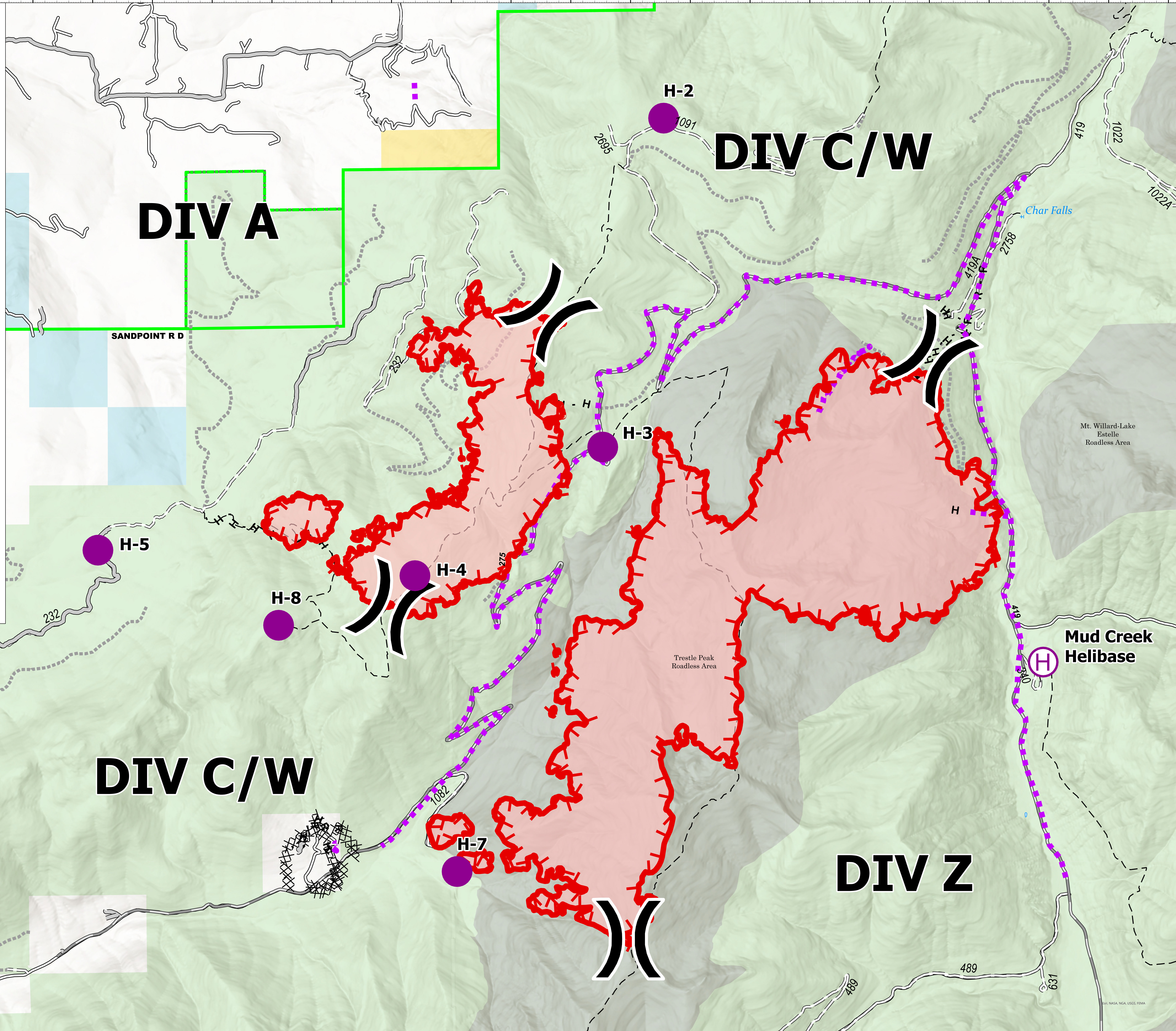


Scale: 1:12,000

- Helispot
- Ⓜ Helibase
-) Division Break
- ⊗ Completed Dozer Line
- H Completed Hand Line
- R Completed Road as Line
- Access or Improved Road
- Route
- Fire Edge
- Wildfire Daily Fire Perimeter
- Forest Service Land
- State Lands
- Bureau of Land Management Lands



Remote Incident Support Team
8/9/2021 2102
North American 1983 Datum,
LatLong Grid



DIV A

DIV C/W

DIV C/W

DIV Z

H-2

H-3

H-4

H-5

H-8

H-7

Mud Creek
Helibase

SANDPOINT R D

Trestle Peak
Roadless Area

Mt. Willard-Lake
Estelle
Roadless Area

Char Falls