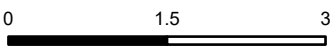


Air Operations

Trestle Creek Complex
 IDIPF-000452
 3735 acres
 8/11/2021 Day

Fire perimeter updated from
 Acres from IR on 08/08/2021 2025



1 inch equals 22 miles Scale: 1:115,000

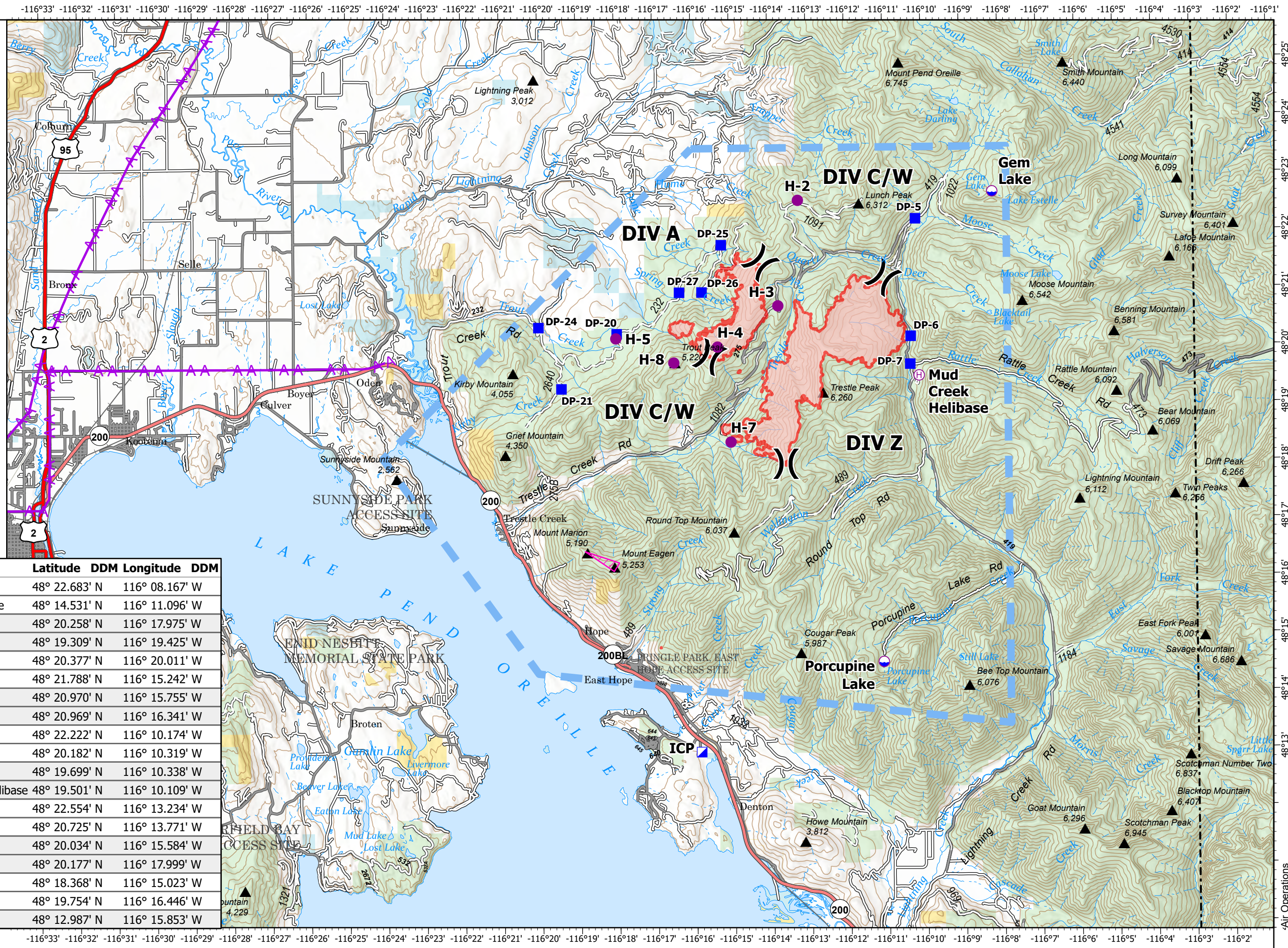


- Dip Site
- Helispot
- Helibase
- Division Break
- Incident Command Post
- Drop Point
- Aerial Hazard
- Temporary Flight Restriction
- Retardant Avoidance
- Wildfire Daily Fire Perimeter



Remote Incident Support
 Team
 8/11/2021 0524
 North American 1983
 Datum. LatLong Grid

Point Type	Name	Latitude DDM	Longitude DDM
Dip Site	Gem Lake	48° 22.683' N	116° 08.167' W
Dip Site	Porcupine Lake	48° 14.531' N	116° 11.096' W
Drop Point	DP-20	48° 20.258' N	116° 17.975' W
Drop Point	DP-21	48° 19.309' N	116° 19.425' W
Drop Point	DP-24	48° 20.377' N	116° 20.011' W
Drop Point	DP-25	48° 21.788' N	116° 15.242' W
Drop Point	DP-26	48° 20.970' N	116° 15.755' W
Drop Point	DP-27	48° 20.969' N	116° 16.341' W
Drop Point	DP-5	48° 22.222' N	116° 10.174' W
Drop Point	DP-6	48° 20.182' N	116° 10.319' W
Drop Point	DP-7	48° 19.699' N	116° 10.338' W
Helibase	Mud Creek Helibase	48° 19.501' N	116° 10.109' W
Helispot	H-2	48° 22.554' N	116° 13.234' W
Helispot	H-3	48° 20.725' N	116° 13.771' W
Helispot	H-4	48° 20.034' N	116° 15.584' W
Helispot	H-5	48° 20.177' N	116° 17.999' W
Helispot	H-7	48° 18.368' N	116° 15.023' W
Helispot	H-8	48° 19.754' N	116° 16.446' W
Incident Command Post	ICP	48° 12.987' N	116° 15.853' W



Air Operations