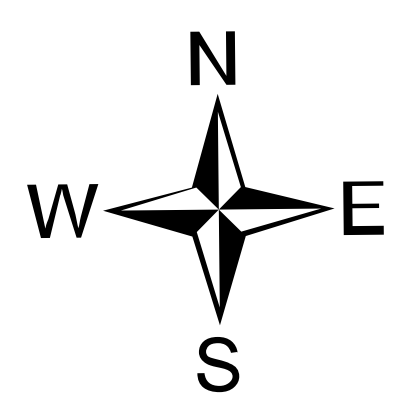
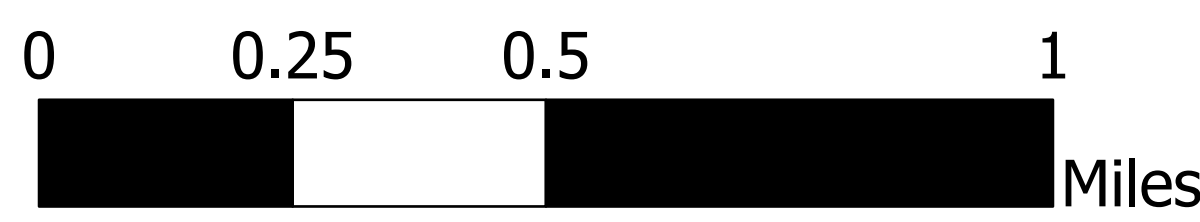


# Briefing

Trestle Creek Complex  
IDIPF-000452  
08/11/2021 Day



3735 acres on 08/08/2021 2025



Scale: 1:12,000

- Helispot
- ⊕ Helibase
- ) Division Break
- Drop Point
- ⊗ Completed Dozer Line
- H Completed Hand Line
- R Completed Road as Line
- Access or Improved Road
- - - Route
- ▬ Fire Edge
- ▭ Wildfire Daily Fire Perimeter
- ▭ Forest Service Land
- ▭ State Lands
- ▭ Bureau of Land Management Lands



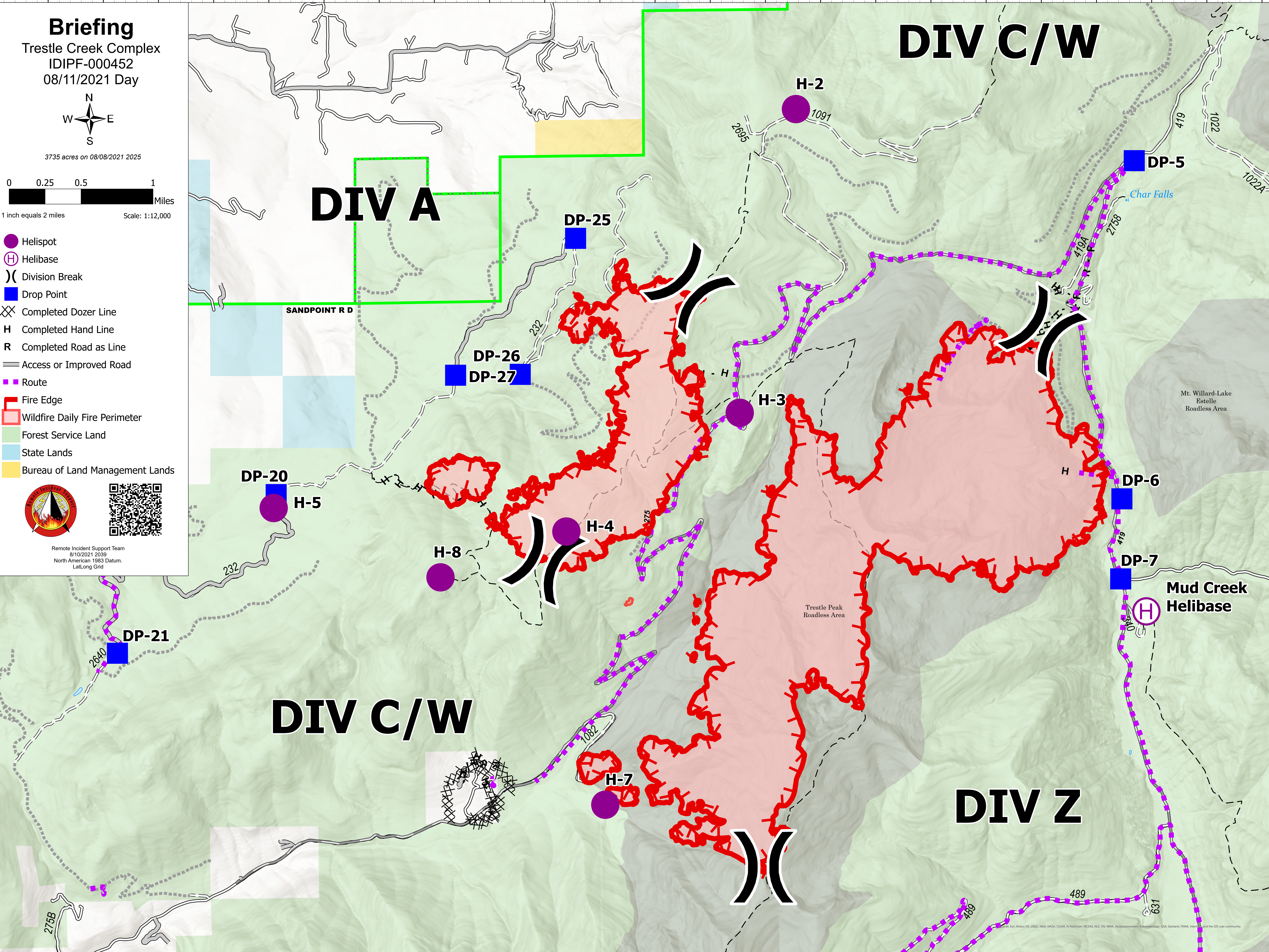
Remote Incident Support Team  
8/10/2021 2039  
North American 1983 Datum,  
LatLong Grid

# DIV C/W

# DIV A

# DIV C/W

# DIV Z



SANDPOINT R D

Trestle Peak Roadless Area

Mt. Willard-Lake Estelle Roadless Area

Mud Creek Helibase

DP-5

DP-6

DP-7

DP-20

DP-21

DP-25

DP-26

DP-27

H-2

H-3

H-4

H-8

H-7

H-5

1022

1022A

419

2758

419A

232

275

1082

489

631

275B

Char Falls