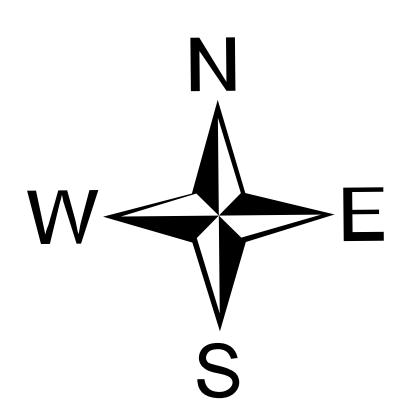
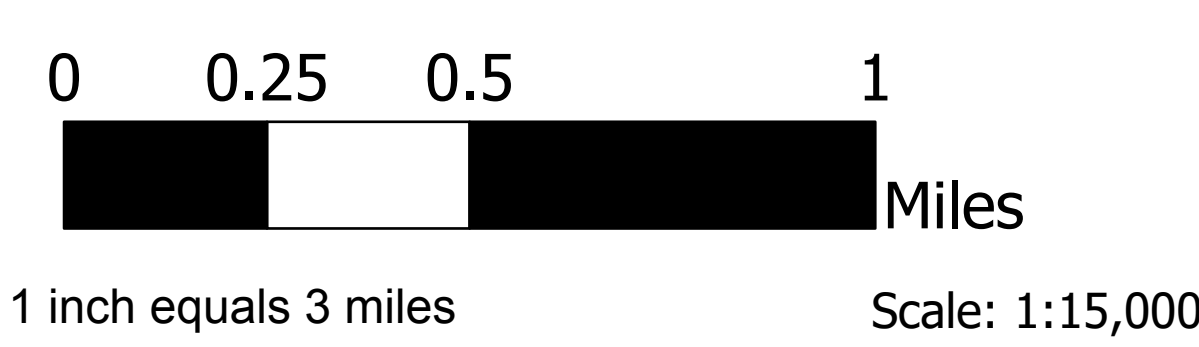


# Briefing

Trestle Creek Complex  
IDIPF-000452  
08/12/2021 Day



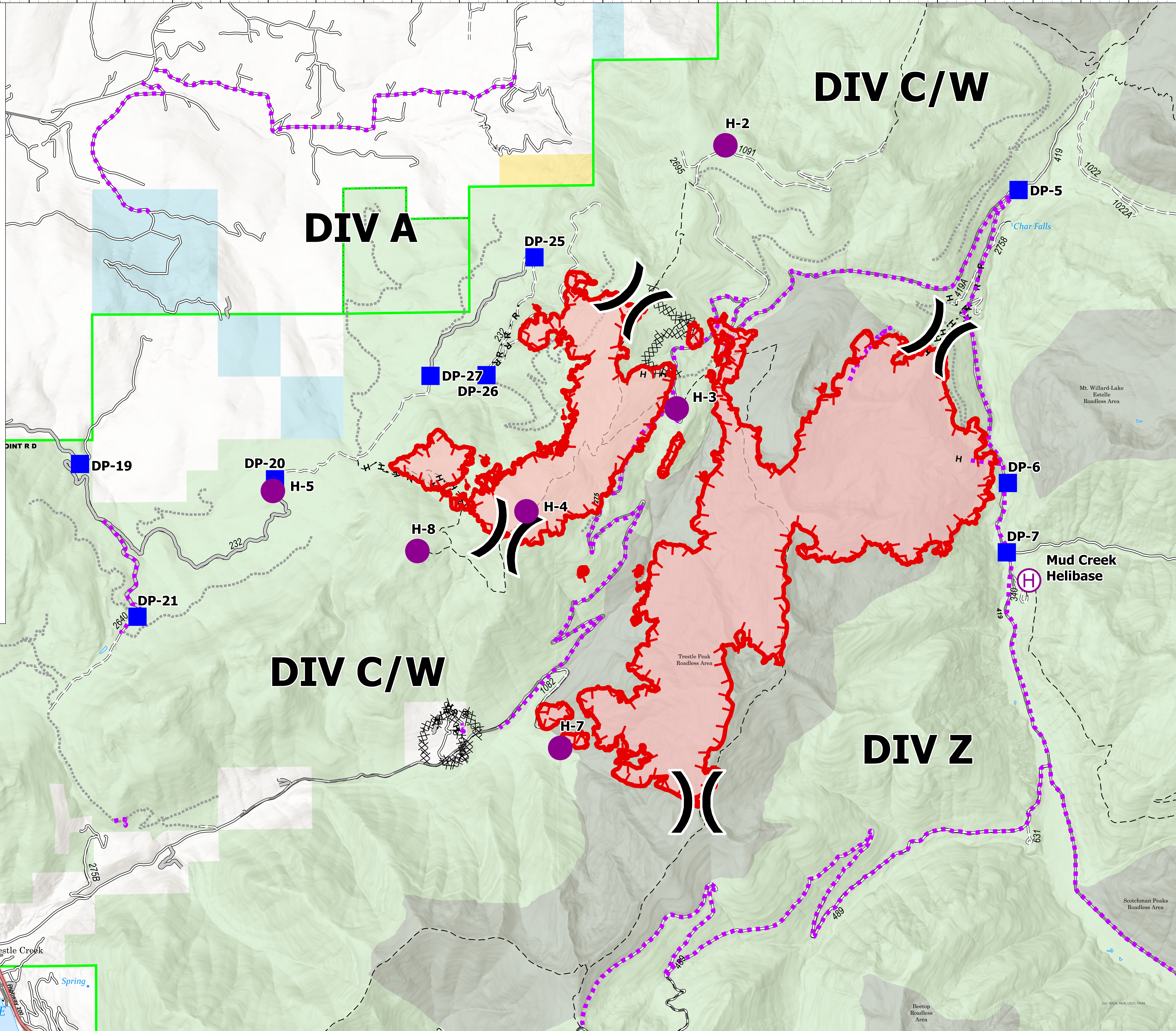
4080 acres on 08/11/2021 2050



- Dip Site
- Helispot
- Helibase
- Division Break
- Drop Point
- Completed Dozer Line
- Completed Hand Line
- Completed Road as Line
- Access or Improved Road
- Route
- Fire Edge
- Wildfire Daily Fire Perimeter
- Forest Service Land
- State Lands
- Bureau of Land Management Lands



Remote Incident Support Team  
8/12/2021 0815  
North American 1983 Datum,  
LatLong Grid



LAKE  
PEND  
OREILLE

SUNNYSIDE PARK  
ACCESS SITE

LAKE PEND OREILLE

## DIV C/W

## DIV A

## DIV C/W

## DIV Z

Mud Creek  
Helibase

H-2

DP-25

DP-27  
DP-26

H-3

DP-19

DP-20  
H-5

H-8

H-4

H

DP-6

DP-7

DP-21

H-7

631

Trestle Creek

213B

Spring

Trestle Peak  
Roadless Area

Scotchman Peaks  
Roadless Area

Beetop  
Roadless Area

ESR: NAD83 NGA USGS FEMA