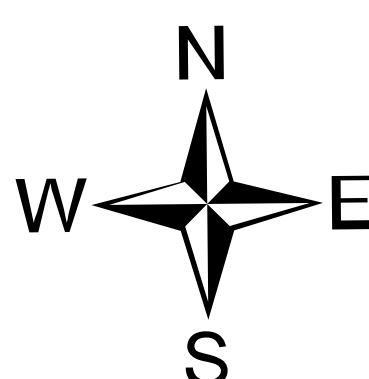
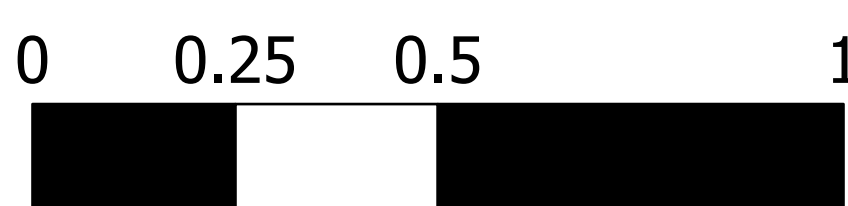


Briefing

Trestle Creek Complex
IDIPF-000452
4080 acres
08/13/2021 Day



Acres from IR on 08/11/2021 2050

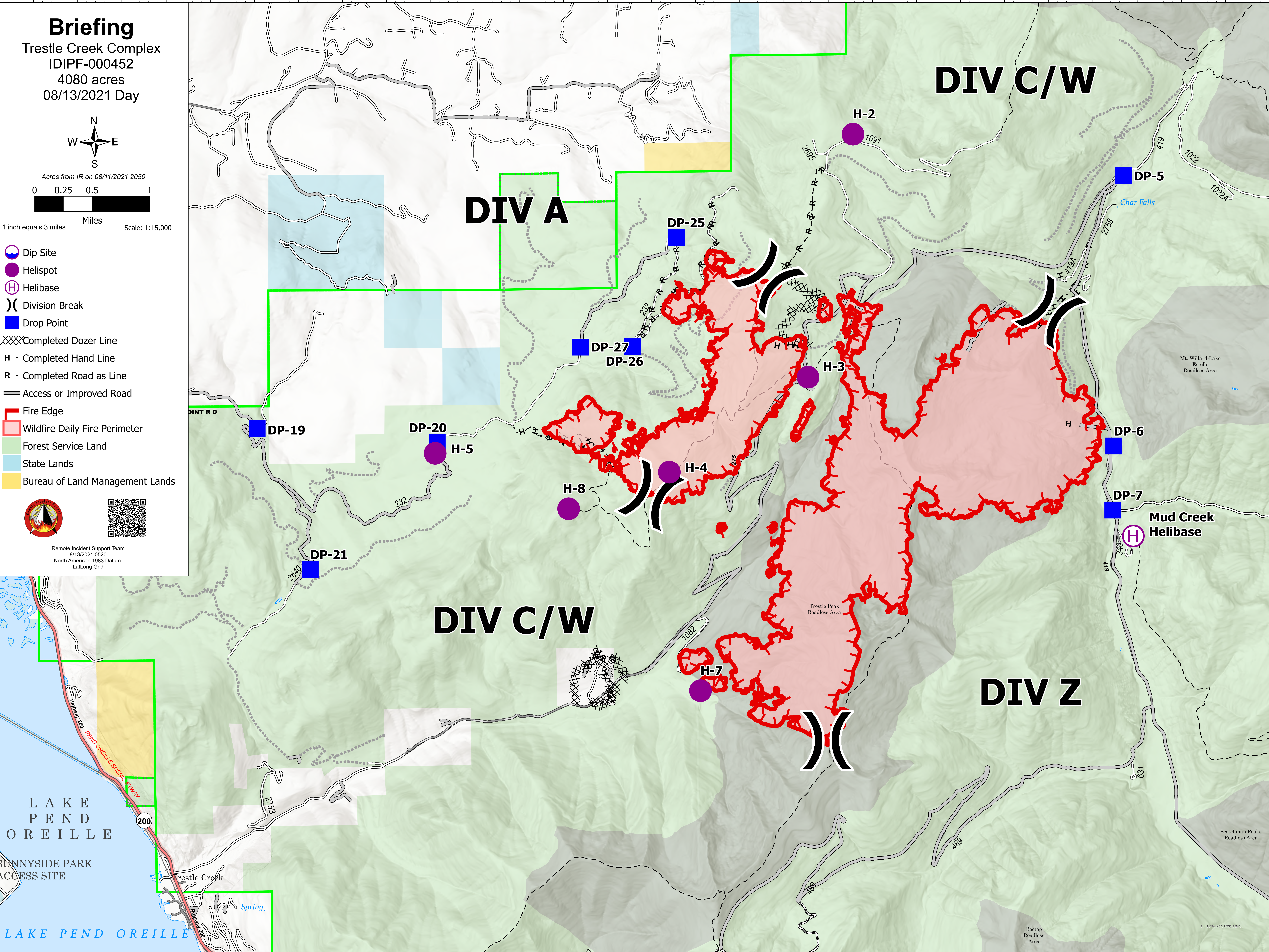


1 inch equals 3 miles Scale: 1:15,000

- Dip Site
- Helispot
- Helibase
- Division Break
- Drop Point
- Completed Dozer Line
- Completed Hand Line
- Completed Road as Line
- Access or Improved Road
- Fire Edge
- Wildfire Daily Fire Perimeter
- Forest Service Land
- State Lands
- Bureau of Land Management Lands



Remote Incident Support Team
8/13/2021 0520
North American 1983 Datum,
LatLong Grid



LAKE
PEND
OREILLE

SUNNYSIDE PARK
ACCESS SITE

LAKE PEND OREILLE

DIV C/W

DIV A

DIV C/W

DIV Z

H-2

DP-5

DP-25

DP-27
DP-26

H-3

DP-19

DP-20
H-5

H-8

H-4

DP-6

DP-7

Mud Creek
Helibase

DP-21

H-7

116°22.5'W 116°22'W 116°21.5'W 116°21.01'W 116°20.5'W 116°20'W 116°19.5'W 116°19'W 116°18.5'W 116°18'W 116°17.5'W 116°17'W 116°16.5'W 116°16'W 116°15.5'W 116°15'W 116°14.5'W 116°14'W 116°13.51'W 116°13'W 116°12.5'W 116°12'W 116°11.5'W 116°11'W 116°10.5'W 116°10'W 116°9.5'W 116°9'W

48°23.5'N 48°23'N 48°22.5'N 48°22'N 48°21.5'N 48°21'N 48°20.5'N 48°20'N 48°19.5'N 48°19'N 48°18.5'N 48°18'N 48°17.5'N 48°17'N 48°16.5'N 48°16'N 48°15.5'N 48°15'N 48°14.5'N 48°14'N 48°13.5'N 48°13'N 48°12.5'N 48°12'N 48°11.5'N 48°11'N 48°10.5'N 48°10'N 48°9.5'N 48°9'N