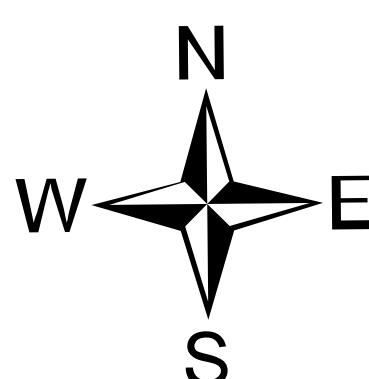
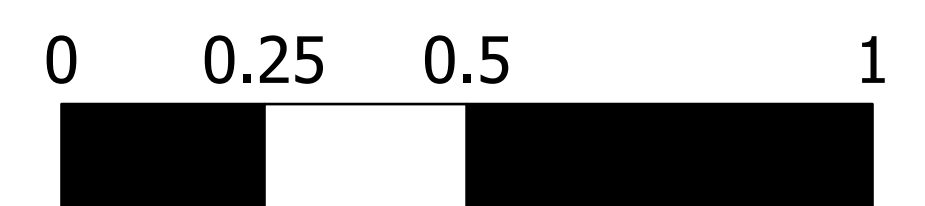


Briefing

Trestle Creek Complex
IDIPF-000452
6180 acres
08/19/2021 Day



Acres from IR + GPS on 08/18/2021 2005

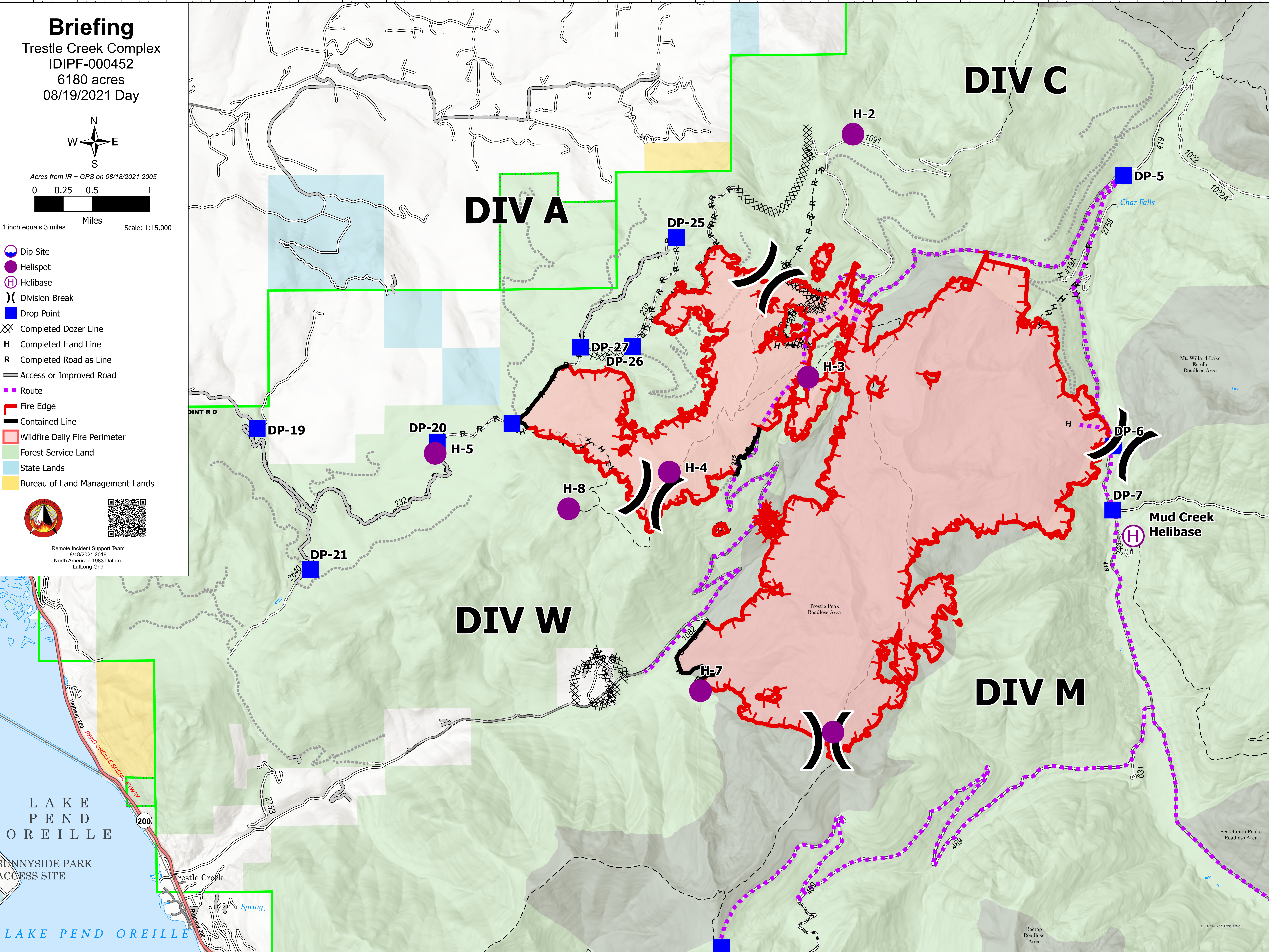


1 inch equals 3 miles Miles Scale: 1:15,000

- Dip Site
- Helispot
- Helibase
- Division Break
- Drop Point
- Completed Dozer Line
- Completed Hand Line
- Completed Road as Line
- Access or Improved Road
- Route
- Fire Edge
- Contained Line
- Wildfire Daily Fire Perimeter
- Forest Service Land
- State Lands
- Bureau of Land Management Lands



Remote Incident Support Team
8/18/2021 2019
North American 1983 Datum,
LatLong Grid



LAKE
PEND
OREILLE

SUNNYSIDE PARK
ACCESS SITE

LAKE PEND OREILLE

DIV C

DIV A

DIV W

DIV M

H-2

DP-5

DP-25

DP-27

DP-26

H-3

DP-6

Mud Creek
Helibase

H

DP-20

H-5

H-8

H-4

DP-21

H-7

DP-7

H

213B

1082

Trestle Peak
Roadless Area

480

631

POINT RD

Trestle Creek

Spring

Beetop
Roadless Area

ESR: NAD83 NGA USGS FEMA