

Operations

Trestle Creek Complex
IDIPF-000452

08/14/2021 Day

6180 acres at 08/18/2021 2005

Event Point

Air Operations

- Helispot
- ⊕ Sling Site

Assignment Breaks

- ⌋ Division Break

Logistics

- Drop Point
- ⊠ Closure
- ⊠ Staging Area

Operations Area

- ⌘ Lookout

Fire

- ⊙ Hot Spot - Spot Fire

Reference

- ⊙ Value at Risk
- Other
- Landmark

Repair

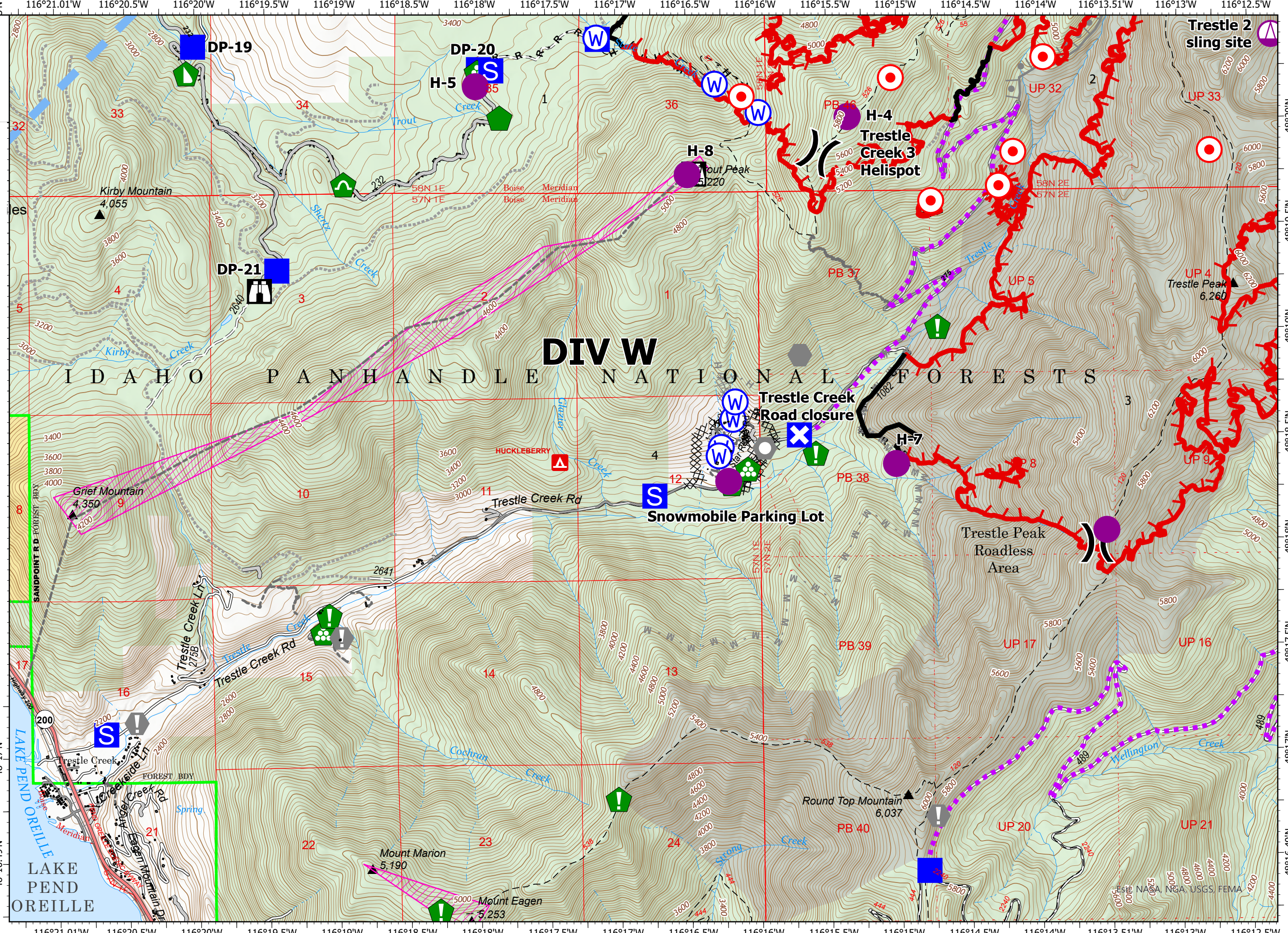
- ⊙ Resource Location
- ⊙ Repair Point
- ⊙ Landing or Log Deck
- ⊙ Dozer Push
- ⊙ Culvert

Water

- ⊙ Water Source
- ⊠ Completed Dozer Line
- H Completed Hand Line
- R Completed Road as Line
- Planned Burnout
- ⊠ Planned Dozer Line
- H Planned Hand Line
- M Planned Mixed Construction Line
- Access or Improved Road
- Other
- Route
- Temporary Flight Restriction
- Fire Edge
- Contained Line
- State Primary Route
- World Hillshade



capplestein
8/19/2021 1833
Acres from IR + GPS
North American 1983 Datum.



Trestle 2 sling site

DIV W

Trestle Creek Road closure

Snowmobile Parking Lot

Trestle Peak Roadless Area

LAKE PEND OREILLE

Est. NAD 83, NGA, USGS, FEMA