

Operations

Trestle Creek Complex
IDIPF-000452
08/19/2021 Day

6180 acres at 08/18/2021 2005

Event Point

Air Operations

- Check Point
- Helispot
- ⊕ Helibase
- ⊕ Sling Site

Assignment Breaks

- ⌋ Division Break

Logistics

- Drop Point
- ⊠ Closure
- ⊠ Camp
- ⊠ Staging Area

Operations

- ⊠ Lookout

Fire

- ⊕ Hot Spot - Spot Fire

Reference

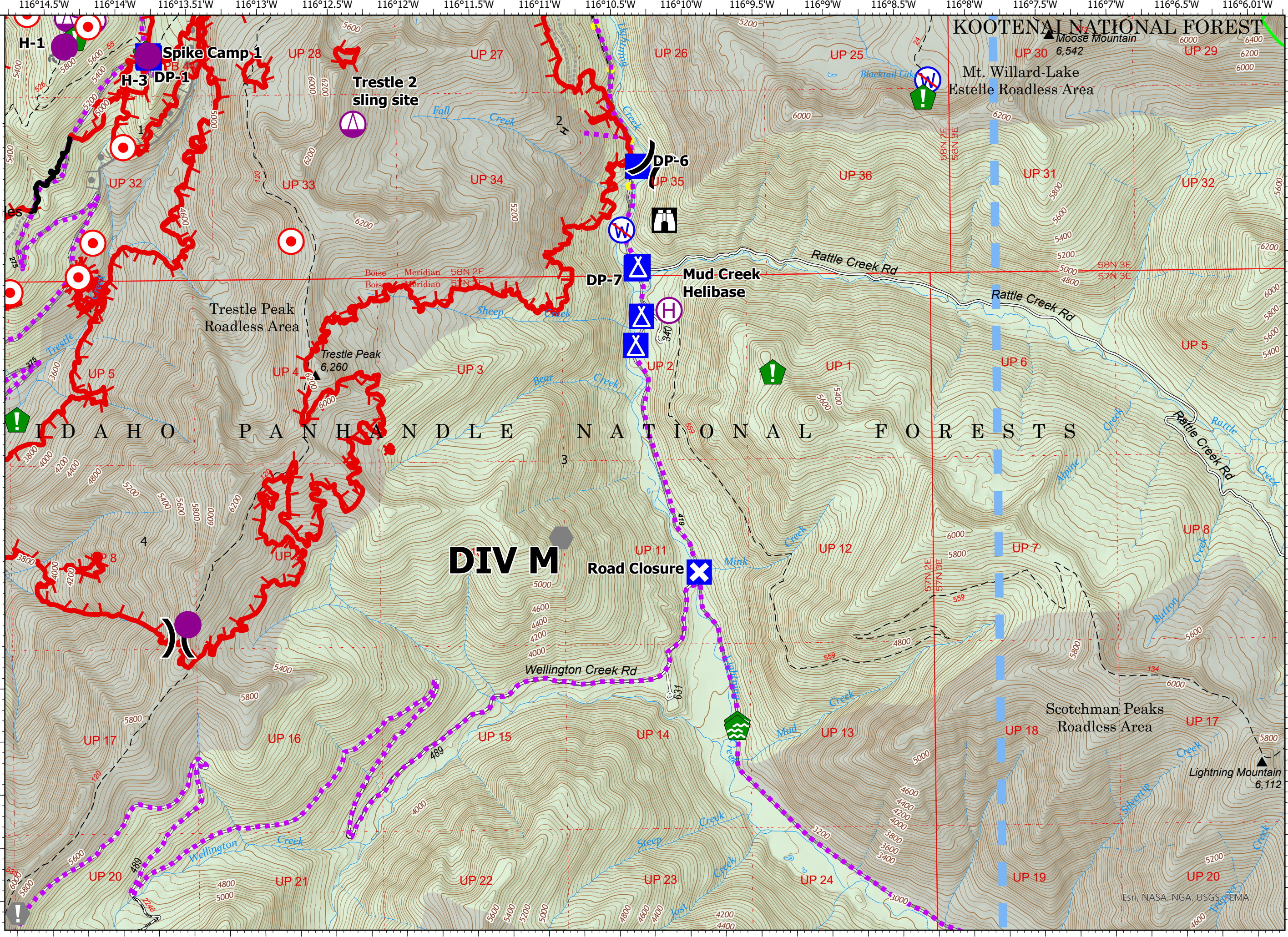
- Value at Risk
- Other

Repair

- ⊠ Water Development or Draft Site
- ⊠ Resource Location
- ⊠ Clean Up Area

Water

- ⊕ Restricted Water Source
- ⊠ Completed Dozer Line
- ⊠ Completed Hand Line
- ⊠ Planned Burnout
- ⊠ Planned Mixed Construction Line
- Highlighted Feature
- ⊠ Other
- ⊠ Route
- ⊠ Temporary Flight Restriction
- ⊠ Fire Edge
- ⊠ Contained Line
- World Hillshade



DIV M

Road Closure



capplestein
8/19/2021 1844
Acres from IR + GPS
North American 1983 Datum.

Esri, NASA, NGA, USGS, BEMA