

Transportation

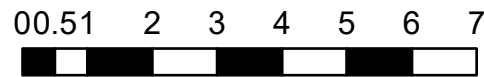
Trestle Creek Complex

IDIPF-000452

6180 acres

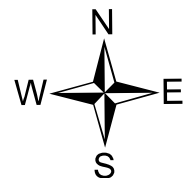
08/19/2021 Day

Acres from IR + GPS on 08/18/2021



Miles

Scale: 1:187,500 1 inch equals 3 miles

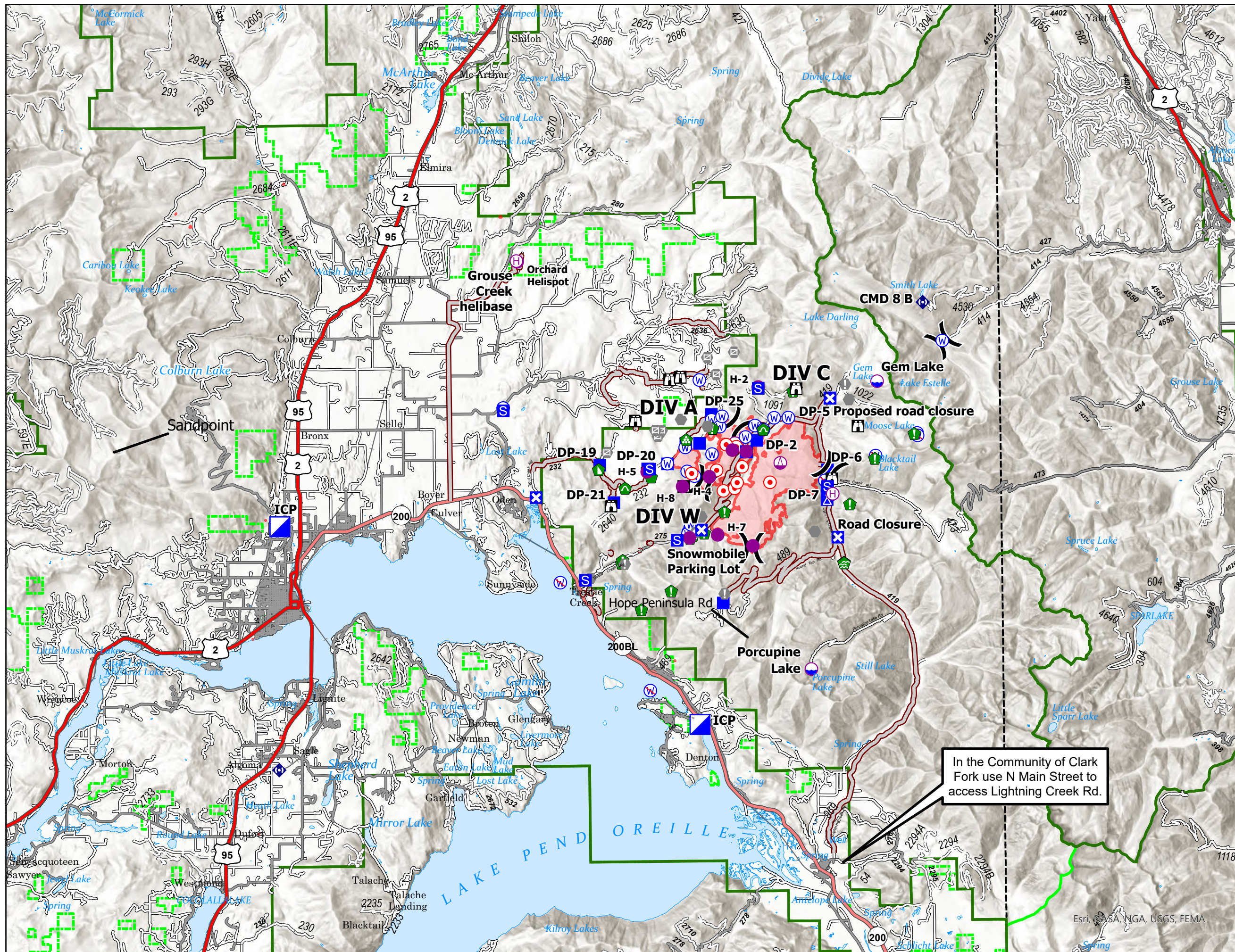


- | | |
|-----------------------|---------------------------------|
| Check Point | Water Development or Draft Site |
| Dip Site | Structure Wrap |
| Helispot | Resource Location |
| Helibase | Repair Point |
| Sling Site | Landing or Log Deck |
| Division Break | Dozer Push |
| Incident Command Post | Culvert |
| Drop Point | Clean Up Area |
| Closure | Repeater |
| Camp | Water Source |
| Staging Area | Restricted Water Source |
| Lookout | Access or Improved Road |
| Hot Spot - Spot Fire | Access Route |
| Value at Risk | Paved Roads |
| Other | Dirt (Not Paved) |
| Landmark | Wildfire Daily Fire Perimeter |
| Gate | World Hillshade |



8/18/2021 2031

North American 1983 Datum.
LatLong Grid



In the Community of Clark Fork use N Main Street to access Lightning Creek Rd.