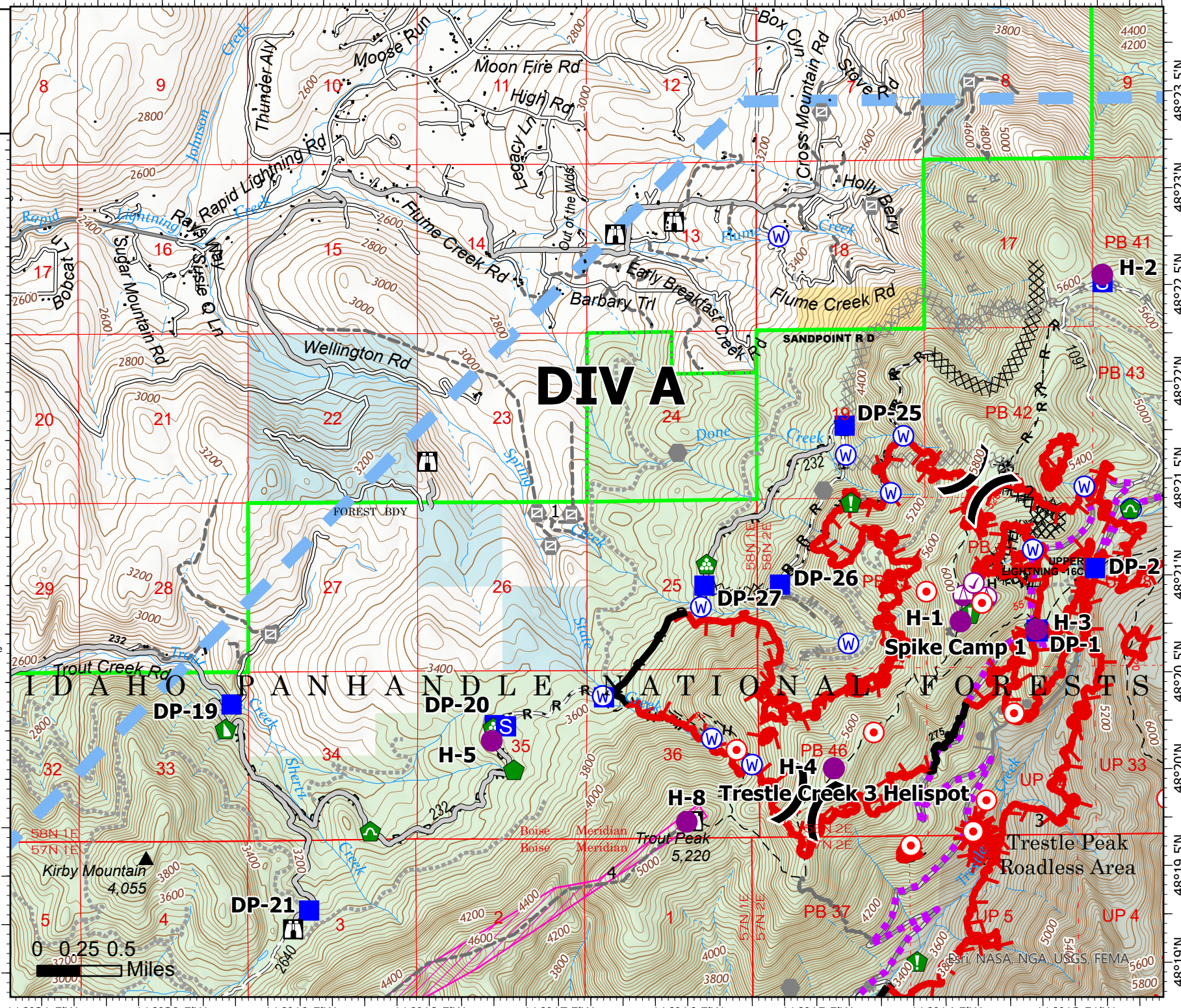


116°21.5'W 116°20.5'W 116°19.5'W 116°18.5'W 116°17.5'W 116°16.5'W 116°15.5'W 116°14.5'W 116°13.51'W

Operations

Trestle Creek Complex
IDIPF-000452
08/20/2021 Day
6180 acres at 08/18/2021 2005

- Check Point
- Helispot
- Sling Site
- Division Break
- Drop Point
- Camp
- Staging Area
- Lookout
- Hot Spot - Spot Fire
- Other
- Gate
- Resource Location
- Repair Point
- Landing or Log Deck
- Dozer Push
- Culvert
- Clean Up Area
- Water Source
- Completed Dozer Line
- Completed Hand Line
- Completed Road as Line
- Planned Burnout
- Planned Dozer Line
- Planned Hand Line
- Planned Mixed Construction Line
- Planned Road as Line
- Access or Improved Road
- Highlighted Feature
- Other
- Route
- Temporary Flight Restriction
- Fire Edge
- Contained Line



Krang
 8/20/2021 0618

0 0.25 0.5 Miles

116°21.5'W 116°20.5'W 116°19.5'W 116°18.5'W 116°17.5'W 116°16.5'W 116°15.5'W 116°14.5'W 116°13.51'W

48°19'N 48°19.5'N 48°20'N 48°20.5'N 48°21'N 48°21.5'N 48°22'N 48°22.5'N 48°23'N 48°23.5'N