

Operations

Trestle Creek Complex
IDIPF-000452
08/20/2021 Day

6180 acres at 08/18/2021 2005

Event Point

Air Operations

- Check Point
- Helispot
- ⊕ Helibase
- ⊕ Sling Site

Assignment Breaks

- ⌋ Division Break

Logistics

- Drop Point
- ⊠ Closure
- ⊠ Camp
- ⊠ Staging Area

Operations

- ⊠ Lookout

Fire

- ⊙ Hot Spot - Spot Fire

Reference

- Value at Risk
- Other

Repair

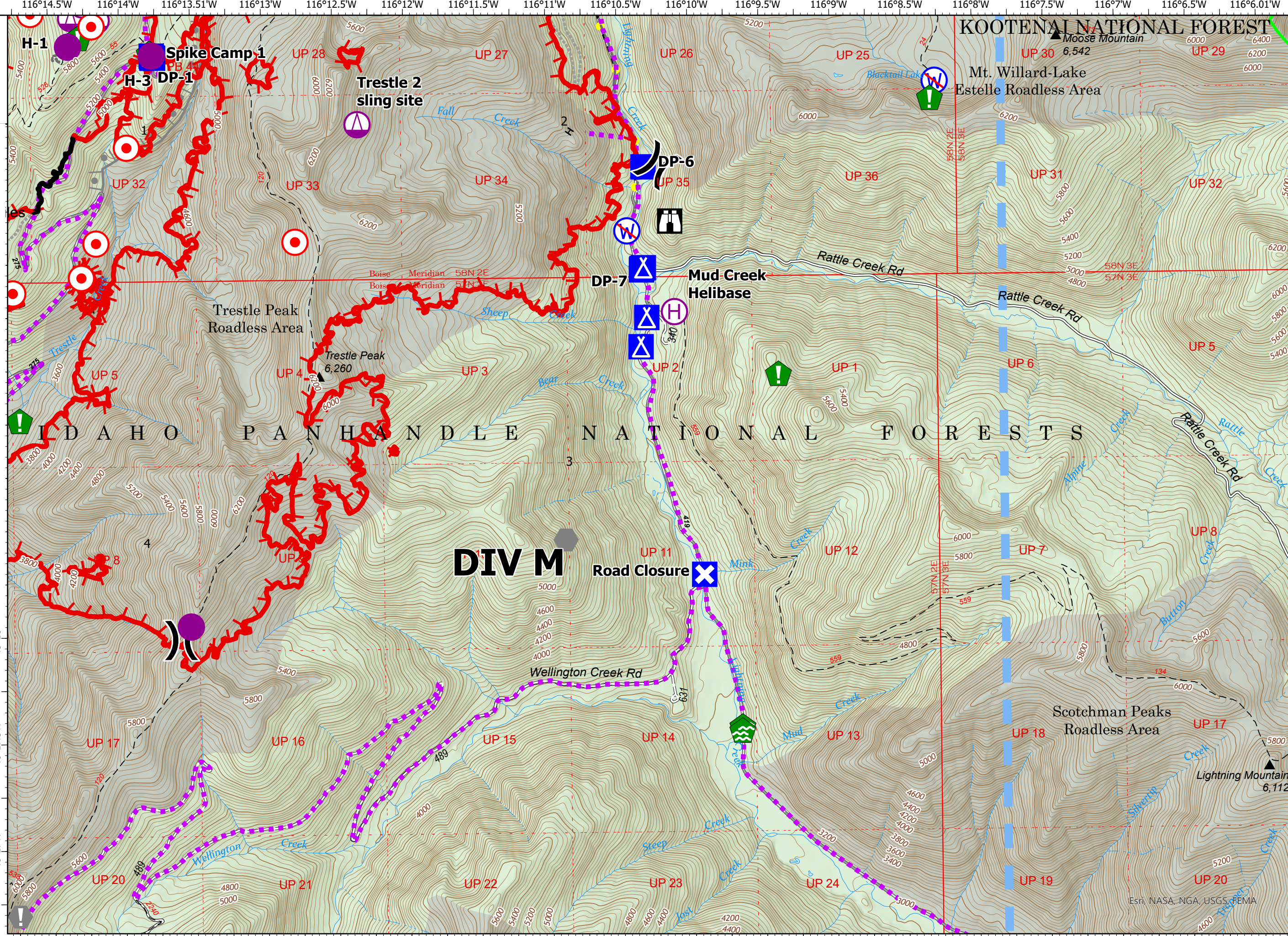
- ⊠ Water Development or Draft Site
- ⊠ Resource Location
- ⊠ Clean Up Area

Water

- ⊠ Restricted Water Source
- ⊠ Completed Dozer Line
- ⊠ Completed Hand Line
- ⊠ Planned Burnout
- ⊠ Planned Mixed Construction Line
- Highlighted Feature
- ⊠ Other
- ⊠ Route
- ⊠ Temporary Flight Restriction
- ⊠ Fire Edge
- ⊠ Contained Line



capplestein
8/20/2021 0531
Acres from IR + GPS
North American 1983 Datum.



KOOTENAI NATIONAL FOREST
Moose Mountain 6,542
Mt. Willard-Lake
Estelle Roadless Area

Trestle Peak Roadless Area

DIV M

Road Closure

Scotchman Peaks Roadless Area

Esri, NASA, NGA, USGS, FEMA