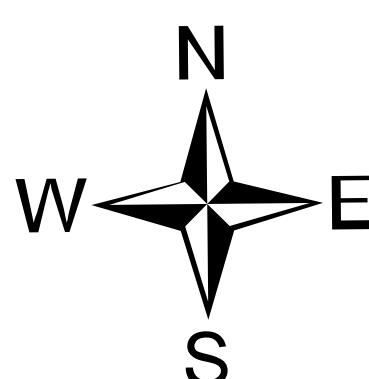
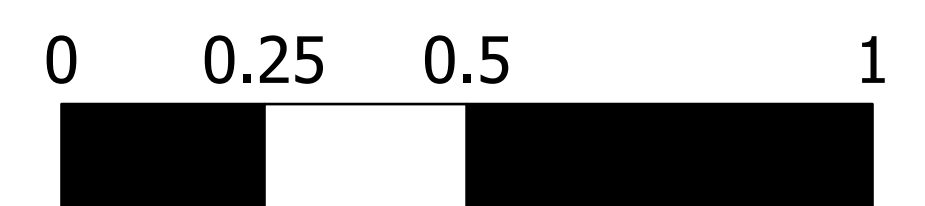


Briefing

Trestle Creek Complex
IDIPF-000452
6180 acres
08/22/2021 Day



Acres from IR + GPS on 08/18/2021 2005

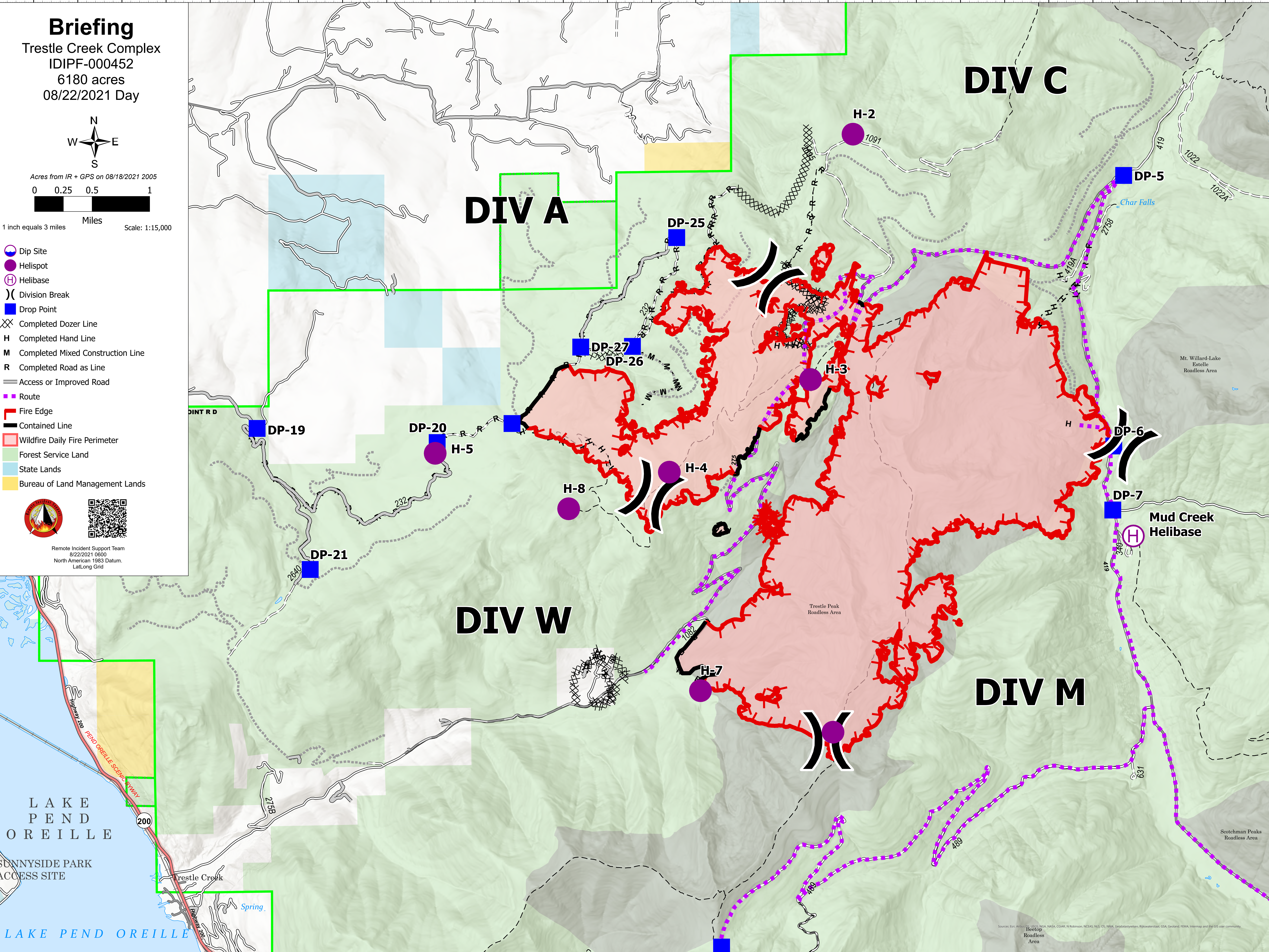


1 inch equals 3 miles Scale: 1:15,000

- Dip Site
- Helispot
- Helibase
- Division Break
- Drop Point
- Completed Dozer Line
- Completed Hand Line
- Completed Mixed Construction Line
- Completed Road as Line
- Access or Improved Road
- Route
- Fire Edge
- Contained Line
- Wildfire Daily Fire Perimeter
- Forest Service Land
- State Lands
- Bureau of Land Management Lands



Remote Incident Support Team
8/22/2021 0600
North American 1983 Datum,
LatLong Grid



LAKE
PEND
OREILLE

SUNNYSIDE PARK
ACCESS SITE

LAKE PEND OREILLE

DIV C

DIV A

DIV W

DIV M

Mud Creek
Helibase

H-2
1091

DP-5

DP-25

DP-27
DP-26

H-3

DP-19

DP-20
H-5

H-8

H-4

DP-6

DP-7

H-7

H-7

Sources: Esri, Airphoto, USDA, NASA, CGAR, N. Robinson, NCEAS, NLS, OS, NMA, Geodatanet, Rijkswaterstaat, GSA, Geoland, FEMA, Intermap and the GIS user community