

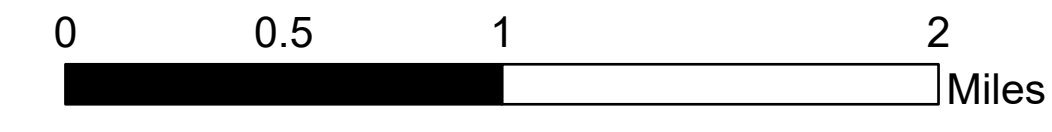
Air Operations

Trestle Creek Complex
IDIPF-000452

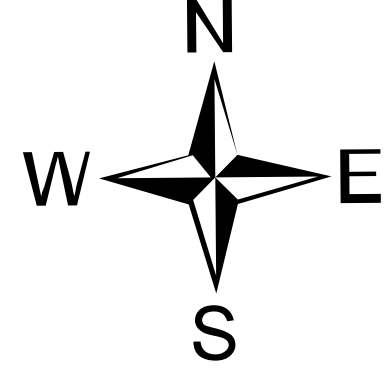
6180 acres

08/23/2021 Day

6180 acres at 08/18/2021 2005



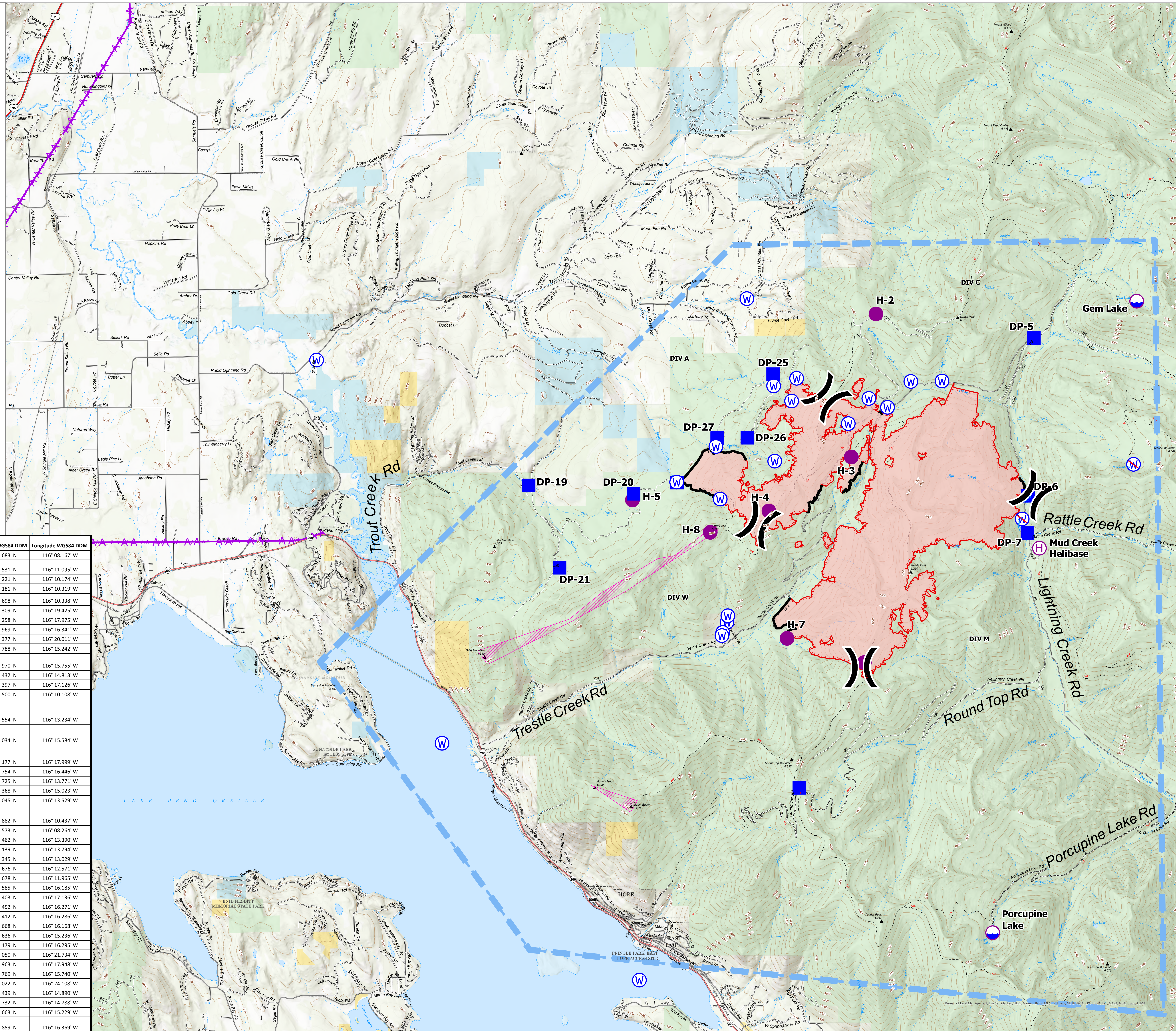
- Retardant Avoidance
- Wildfire Daily Fire Perimeter
- Dip Site
- Helispot
- Helibase
- Division Break
- Drop Point
- Water Source
- Restricted Water Source
- Aerial Hazard
- Temporary Flight Restriction



8/22/2021 2233

North American 1983 Datum, Lat/Long Grid

Point Type	Label	Comments	Latitude WGS84 DDM	Longitude WGS84 DDM
Dip Site	Gem Lake	GEM LAKE	48° 22.683' N	116° 08.167' W
Dip Site	Porcupine Lake	<Null>	48° 14.531' N	116° 11.095' W
Drop Point	DP-5	flagging and signage present	48° 22.221' N	116° 10.174' W
Drop Point	DP-7	Pumpkin/Pump Site	48° 20.181' N	116° 10.319' W
Drop Point	DP-7	Equipment and Vehicle Staging Area	48° 19.698' N	116° 10.338' W
Drop Point	DP-21	<Null>	48° 19.309' N	116° 19.425' W
Drop Point	DP-20	<Null>	48° 20.258' N	116° 17.975' W
Drop Point	DP-27	Bottom of dozer line	48° 20.969' N	116° 16.341' W
Drop Point	DP-19	Also a draft site	48° 20.377' N	116° 20.011' W
Drop Point	DP-25	dozed wider for equipment turn	48° 21.788' N	116° 15.242' W
Drop Point	DP-26	<Null>	48° 20.970' N	116° 15.755' W
Drop Point	DP-26	<Null>	48° 16.432' N	116° 14.813' W
Drop Point	DP-21	<Null>	48° 20.397' N	116° 17.126' W
Helibase	Helibase	<Null>	48° 19.500' N	116° 10.108' W
Helispot	H-2	Dust abatement needed prior to use, Rocky/gravel pit area off the road	48° 22.554' N	116° 13.234' W
Helispot	H-4	Dust abatement needed prior to use Dust abatement REQUIRED, tender needed on site. Newly cut area about an acre in size near the road.	48° 20.034' N	116° 15.584' W
Helispot	H-5	<Null>	48° 20.177' N	116° 17.999' W
Helispot	H-8	Trout Peak	48° 19.754' N	116° 16.446' W
Helispot	H-3	<Null>	48° 20.725' N	116° 13.771' W
Helispot	H-7	<Null>	48° 18.368' N	116° 15.023' W
Helispot	<Null>	Medivac site	48° 18.045' N	116° 13.529' W
Restricted Water Source	<Null>	High Flow Pump Site- 50 ft draft Capability	48° 19.882' N	116° 10.437' W
Source	<Null>	Blackmail lake	48° 20.573' N	116° 08.264' W
Water Source	<Null>	Needs improved to be a pump site	48° 21.462' N	116° 13.390' W
Water Source	<Null>	source to the North. Steep access to	48° 21.139' N	116° 13.794' W
Water Source	<Null>	not in use currently, flagged.	48° 21.345' N	116° 13.029' W
Water Source	<Null>	flagged, not in use at present	48° 21.676' N	116° 12.571' W
Water Source	<Null>	flagged, not currently in use	48° 21.678' N	116° 11.965' W
Water Source	<Null>	feed	48° 18.585' N	116° 16.185' W
Water Source	<Null>	<Null>	48° 20.403' N	116° 17.136' W
Water Source	<Null>	Beginning of 6 inch line	48° 18.452' N	116° 16.271' W
Water Source	<Null>	2500 gallon tank can drive to it	48° 18.412' N	116° 16.286' W
Water Source	<Null>	<Null>	48° 18.668' N	116° 16.168' W
Water Source	<Null>	<Null>	48° 21.636' N	116° 15.236' W
Water Source	<Null>	<Null>	48° 20.179' N	116° 16.295' W
Water Source	<Null>	Known Invasive here, Eurasian milfoil	48° 17.050' N	116° 21.734' W
Water Source	<Null>	Known Invasive Eurasian milfoil	48° 13.963' N	116° 17.948' W
Water Source	<Null>	<Null>	48° 22.769' N	116° 15.740' W
Water Source	<Null>	<Null>	48° 22.022' N	116° 24.108' W
Water Source	<Null>	Engine fill site	48° 21.439' N	116° 14.890' W
Water Source	<Null>	Engine fill site	48° 21.732' N	116° 14.788' W
Water Source	<Null>	<Null>	48° 20.663' N	116° 15.229' W
Water Source	<Null>	Mark 3 pump CDK-0148-25349. Also, lightweight pump 8606-GBK-6000-	48° 20.859' N	116° 16.369' W



Bureau of Land Management, Esri, Garmin, GEBCO, HERE, DeLorme, Intermap, INCREMENT P, NOAA, IGN, Swisstopo, SVA, Swisstopo, IGN, USGS, FAO, NAD, NGA, NGA, USGS, FAO