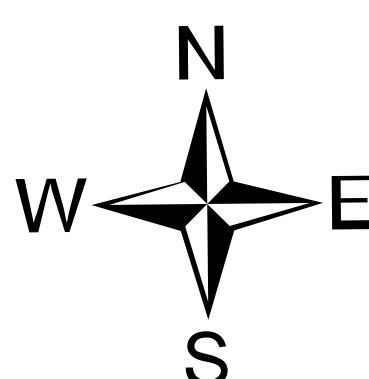
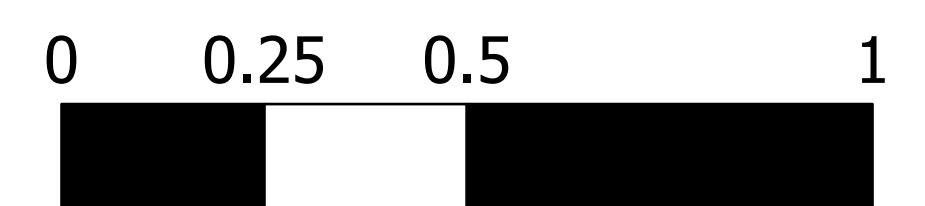


# Briefing

Trestle Creek Complex  
IDIPF-000452  
6181 acres  
08/23/2021 Day



Acres from IR + GPS on 08/18/2021 2005

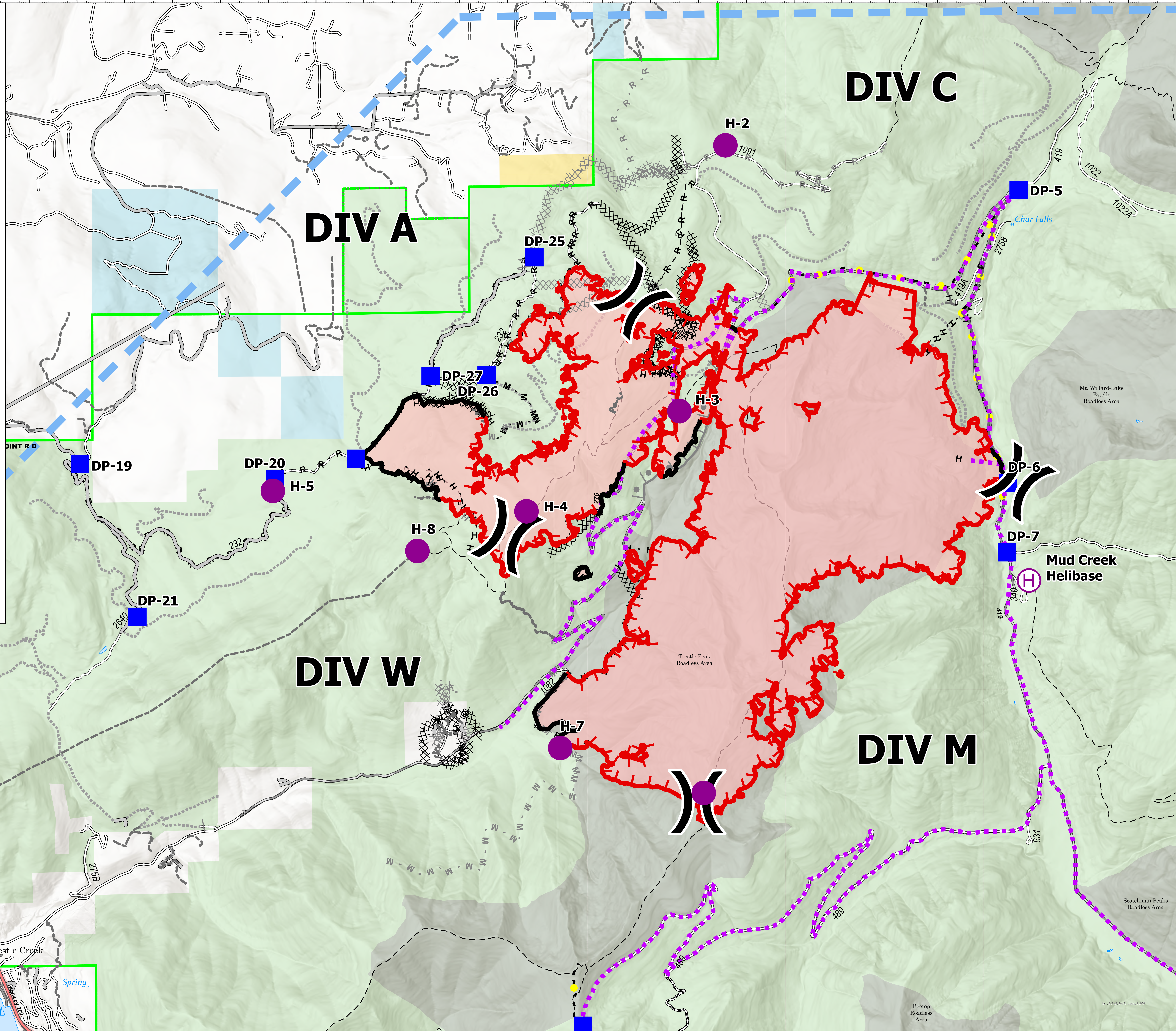


1 inch equals 3 miles    Miles    Scale: 1:15,000

- Dip Site
- Helispot
- ⊕ Helibase
- ⊕ Division Break
- Drop Point
- ⊗ Completed Dozer Line
- ⊗ Completed Hand Line
- ⊗ Completed Mixed Construction Line
- ⊗ Completed Road as Line
- ⊗ Planned Burnout
- ⊗ Planned Dozer Line
- ⊗ Planned Fuel Break
- ⊗ Planned Hand Line
- ⊗ Planned Mixed Construction Line
- R Planned Road as Line
- S Planned Secondary Line
- Access or Improved Road
- Highlighted Feature
- Other
- Route
- Temporary Flight Restriction
- Fire Edge
- Contained Line
- Wildfire Daily Fire Perimeter
- Forest Service Land
- State Lands
- Bureau of Land Management Lands



Remote Incident Support Team  
8/23/2021 1531  
North American 1983 Datum.  
LatLong Grid



## DIV C

## DIV A

## DIV W

## DIV M

Mud Creek Helibase

Char Falls

Beetop Roadless Area

Scotchman Peaks Roadless Area

Trestle Peak Roadless Area

Mt. Willard-Lake Estelle Roadless Area

POINT RD

Trestle Creek

Spring

LAKE PEND OREILLE

LAKE PEND OREILLE

SUNNYSIDE PARK ACCESS SITE

200

LAKE PEND OREILLE