

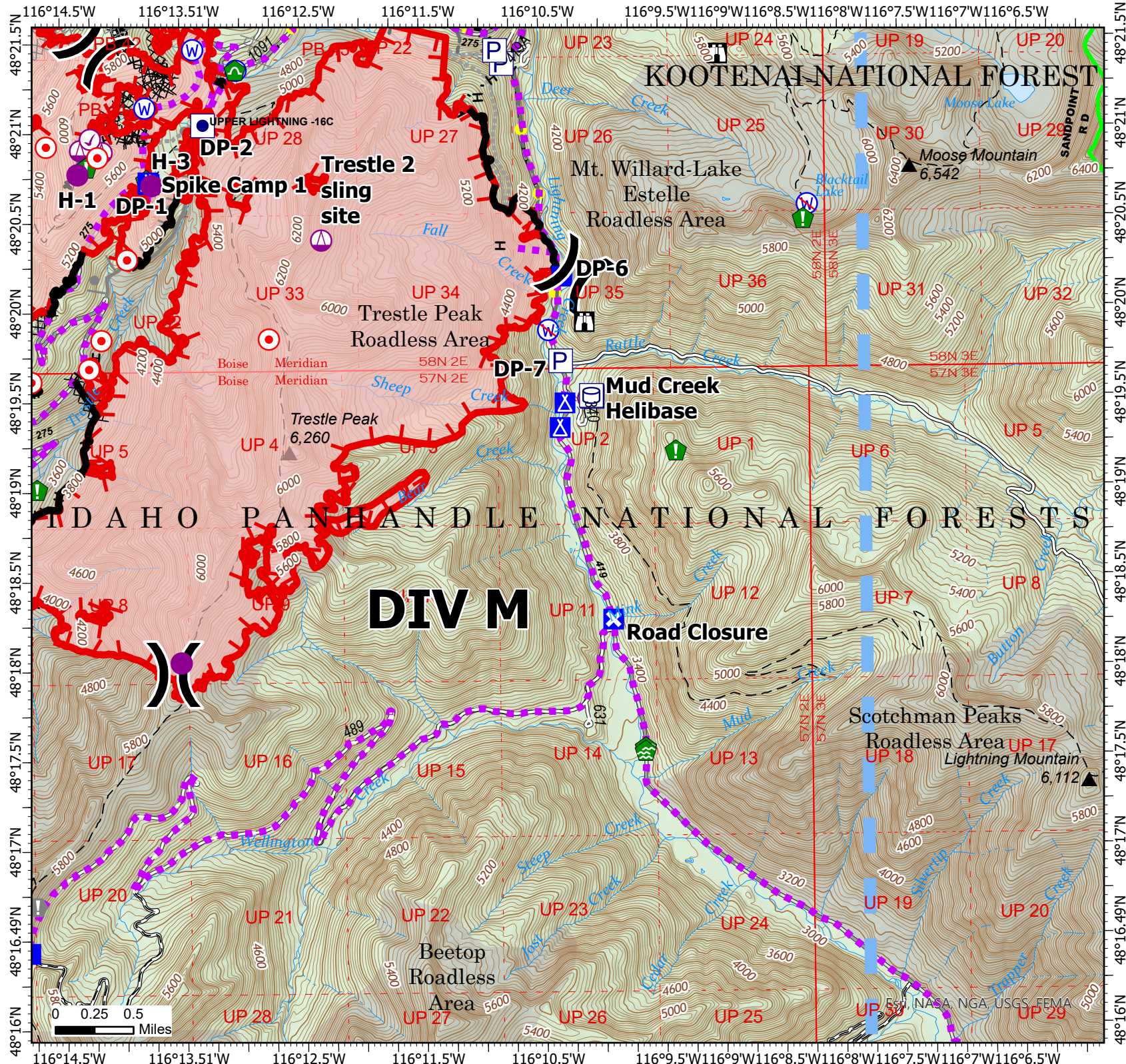
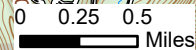
Operations

Trestle Creek Complex
IDIPF-000452
6600 acres at 8/23/2021
08/24/2021

- ✓ Check Point
- Helispot
- ⊕ Helibase
- ⊕ Slingsite
- ⌋ Division Break
- Drop Point
- ⊗ Closure
- ⊕ Camp
- ⊕ Staging Area
- ⊕ Lookout
- ⊕ Hot Spot - Spot Fire
- ⊕ Value at Risk
- ⊕ Water Development or Draft Site
- ⊕ Resource Location
- ⊕ Culvert
- ⊕ Clean Up Area
- ⊕ Water Source
- ⊕ Restricted Water Source
- ⊕ Other Property
- ⊕ Pump
- ⊕ Water Tank
- ⊗ Completed Dozer Line
- H Completed Hand Line
- R Completed Road as Line
- Planned Burnout
- ⊗ Planned Dozer Line
- M Planned Mixed Construction Line
- S Planned Secondary Line
- Highlighted Feature
- Other
- Route
- Temporary Flight Restriction
- Fire Edge
- Contained Line



B. Krausmann
8/24/2021 1236
Acres from IR 8/23/2021 @ 2205
PDT
North American 1983 Datum.
Lat/Long Grid



Esri, NASA, NGA, USGS, FEMA