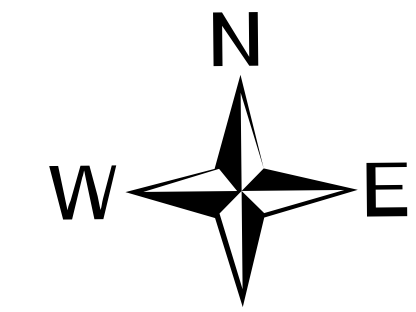
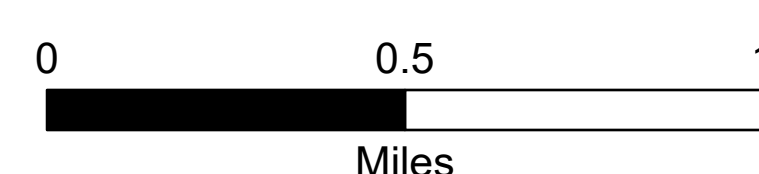


Operations - IR

Trestle Creek Complex
IDIPF-000452
6674 acres
08/26/2021

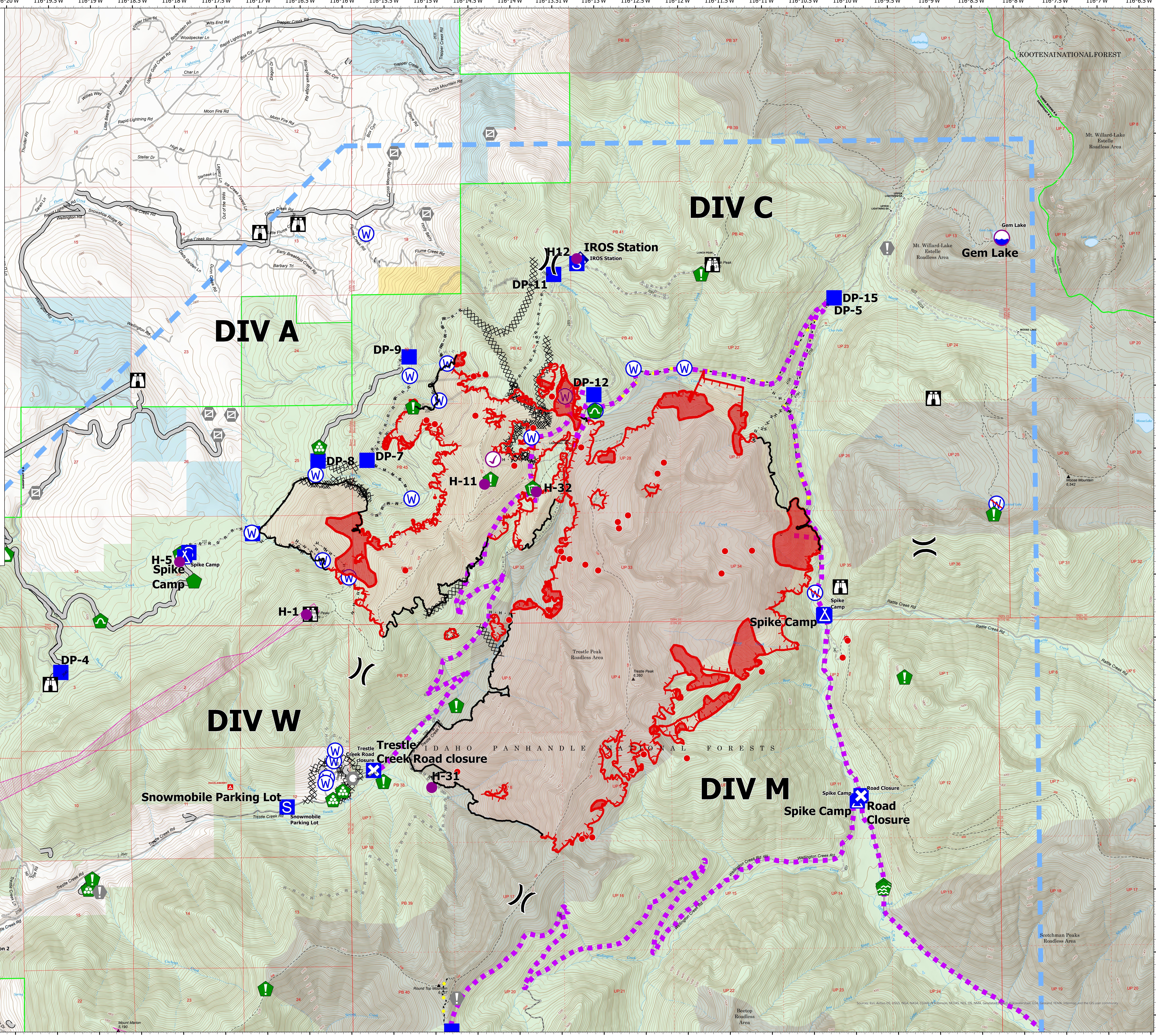
Acres from IR 8/25/2021 @ 2138 PDT
08/26/2021 Day



- Check Point
- Dip Site
- Helispot
- Division Break
- Drop Point
- Closure
- Camp
- Staging Area
- Lookout
- Value at Risk
- Landmark
- Gate
- Fire Station
- Water Development or Draft Site
- Structure Wrap
- Resource Location
- Repair Point
- Landing or Log Deck
- Dozer Push
- Culvert
- Clean Up Area
- Mobile Weather Unit
- Water Source
- Restricted Water Source
- Completed Dozer Line
- Completed Hand Line
- Completed Mixed Construction Line
- Completed Road as Line
- Planned Burnout
- Planned Dozer Line
- Planned Fuel Break
- Planned Hand Line
- Planned Mixed Construction Line
- Planned Road as Line
- Planned Secondary Line
- Access or Improved Road
- Highlighted Feature
- Route
- Temporary Flight Restriction
- Fire Edge
- Other
- Wildfire Daily Fire Perimeter
- Retardant Avoidance
- Forest Service Land
- State Lands
- Bureau of Land Management Lands
- Isolated Heat
- Intense Heat
- Scattered Heat



North American 1983 Datum, Lat/Long Grid



Fire Station 2

Snowmobile Parking Lot

Trestle Creek Road closure

DIV M

Spike Camp Road Closure

DIV C

DIV A

DIV W

IROS Station

Gem Lake

H-5 Spike Camp

Spike Camp

Spike Camp

H-11

H-32

H-31

DP-9

DP-8

DP-7

DP-11

DP-12

DP-15

DP-5

116°22.5'W 116°22'W 116°21.5'W 116°21.01'W 116°20.5'W 116°20'W 116°19.5'W 116°19'W 116°18.5'W 116°18'W 116°17.5'W 116°17'W 116°16.5'W 116°16'W 116°15.5'W 116°15'W 116°14.5'W 116°14'W 116°13.51'W 116°13'W 116°12.5'W 116°12'W 116°11.5'W 116°11'W 116°10.5'W 116°10'W 116°9.5'W 116°9'W 116°8.5'W 116°8'W 116°7.5'W 116°7'W 116°6.5'W

48°24.5'N 48°24'N 48°23.5'N 48°23'N 48°22.5'N 48°22'N 48°21.5'N 48°21'N 48°20.5'N 48°20'N 48°19.5'N 48°19'N 48°18.5'N 48°18'N 48°17.5'N 48°17'N 48°16.5'N 48°16'N 48°15.5'N 48°15'N 48°14.5'N 48°14'N 48°13.51'N 48°13'N 48°12.5'N 48°12'N 48°11.5'N 48°11'N 48°10.5'N 48°10'N 48°9.5'N 48°9'N 48°8.5'N 48°8'N 48°7.5'N 48°7'N 48°6.5'N