

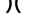






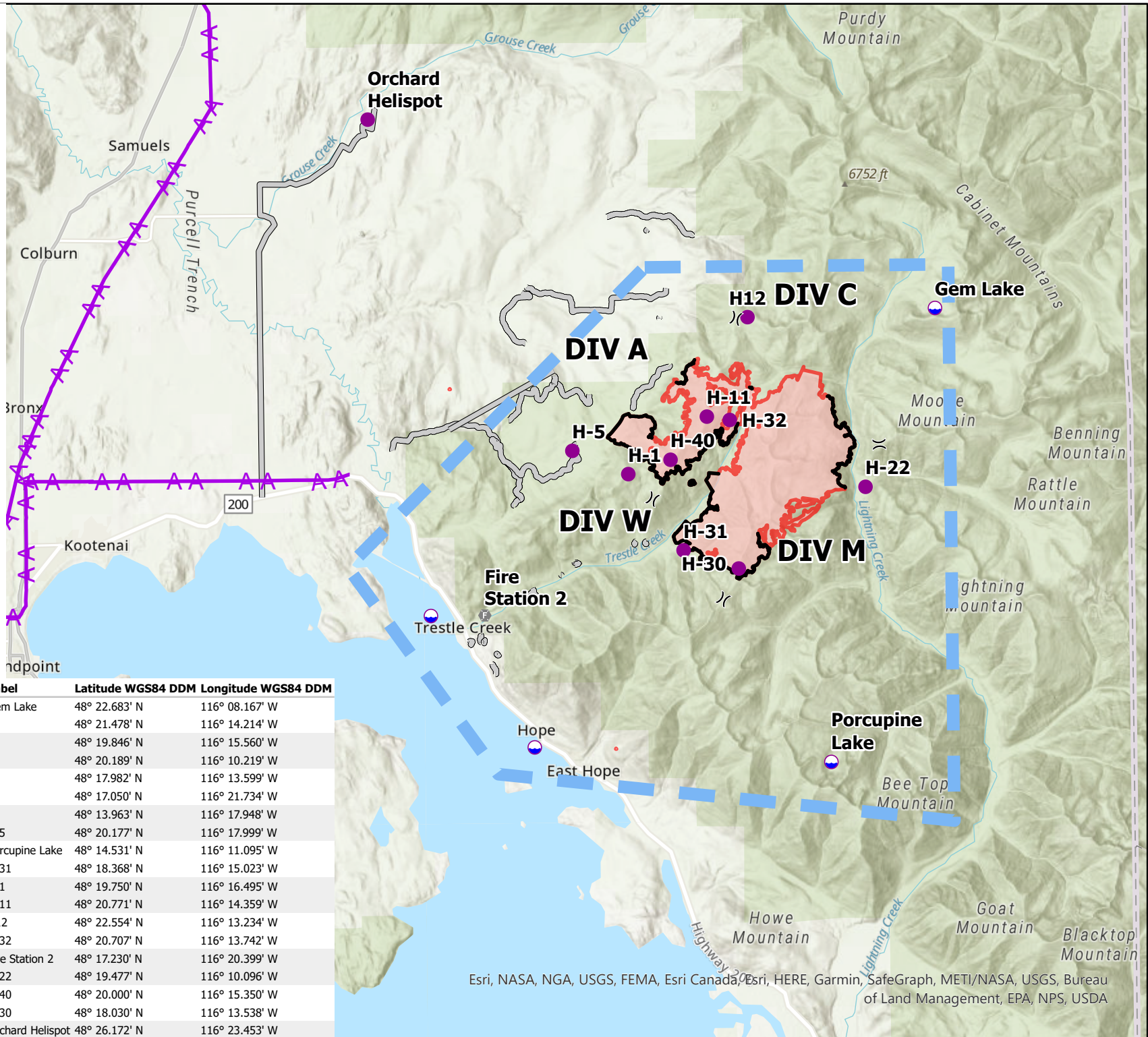


Air Operations
Trestle Creek Complex
IDIPF-000452
6674 Acres
08/27/2021

-  Dip Site
-  Helispot
-  Division Break
-  Fire Station
-  Access or Improved Road
-  Aerial Hazard
-  Temporary Flight Restriction
-  Contained Line
-  Wildfire Daily Fire Perimeter



B. Krausmann
 K.Rang
 08/27/2021
 North American 1983
 Datum.



Incident Name	FC Point Type	Label	Latitude WGS84 DDM	Longitude WGS84 DDM
Trestle Creek Complex Dip Site	Gem Lake		48° 22.683' N	116° 08.167' W
Trestle Creek Complex Division Break			48° 21.478' N	116° 14.214' W
Trestle Creek Complex Division Break			48° 19.846' N	116° 15.560' W
Trestle Creek Complex Division Break			48° 20.189' N	116° 10.219' W
Trestle Creek Complex Division Break			48° 17.982' N	116° 13.599' W
Trestle Creek Complex Dip Site			48° 17.050' N	116° 21.734' W
Trestle Creek Complex Dip Site			48° 13.963' N	116° 17.948' W
Trestle Creek Complex Helispot	H-5		48° 20.177' N	116° 17.999' W
Trestle Creek Complex Dip Site	Porcupine Lake		48° 14.531' N	116° 11.095' W
Trestle Creek Complex Helispot	H-31		48° 18.368' N	116° 15.023' W
Trestle Creek Complex Helispot	H-1		48° 19.750' N	116° 16.495' W
Trestle Creek Complex Helispot	H-11		48° 20.771' N	116° 14.359' W
Trestle Creek Complex Helispot	H12		48° 22.554' N	116° 13.234' W
Trestle Creek Complex Helispot	H-32		48° 20.707' N	116° 13.742' W
Trestle Creek Complex Fire Station	Fire Station 2		48° 17.230' N	116° 20.399' W
Trestle Creek Complex Helispot	H-22		48° 19.477' N	116° 10.096' W
Trestle Creek Complex Helispot	H-40		48° 20.000' N	116° 15.350' W
Trestle Creek Complex Helispot	H-30		48° 18.030' N	116° 13.538' W
Trestle Creek Complex Helispot	Orchard Helispot		48° 26.172' N	116° 23.453' W