

Operations

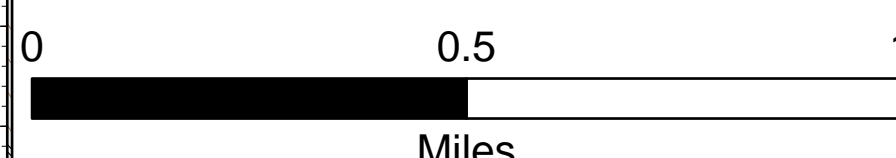
Trestle Creek Complex

IDIPF-000452

6697 acres

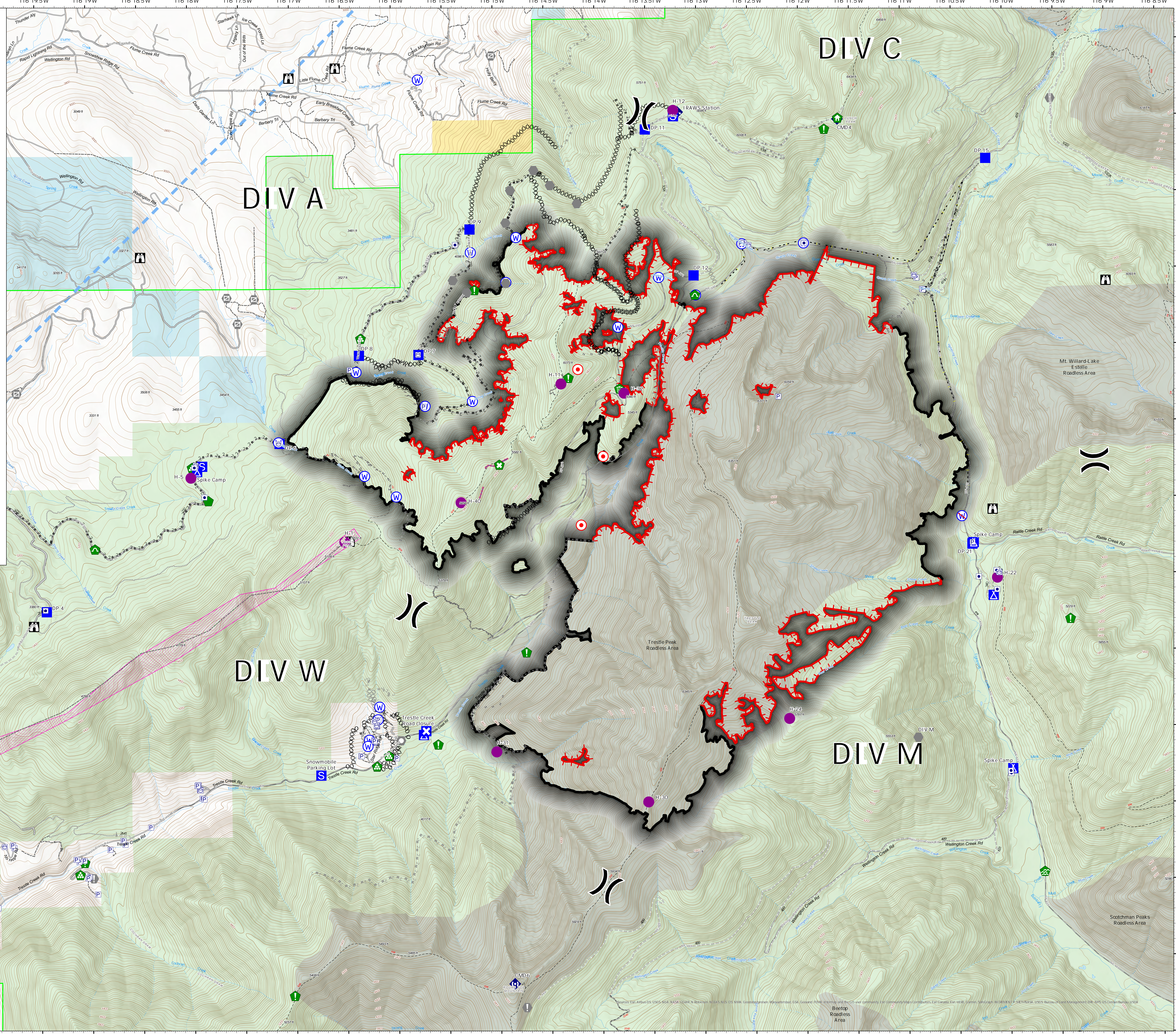
08/31/2021 Day

Acres from IR 8/28/2021 @ 2000 PDT



- Dip Site
- Hellspot
- Division Break
- Drop Point
- Closure
- Camp
- Staging Area
- Lookout
- Hot Spot - Spot Fire
- Value at Risk
- Other
- Landmark
- Gate
- Fire Station
- Water Development or Draft Site
- Structure Wrap
- Retardant in Avoidance Area
- Resource Location
- Repair Point
- Landing or Log Deck
- Dozer Push
- Culvert
- Clean Up Area
- Mobile Weather Unit
- Repeater
- Water Source
- Restricted Water Source
- Completed Dozer Line
- Completed Fuel Break
- Completed Hand Line
- Completed Mixed Construction Line
- Completed Road as Line
- Planned Burnout
- Planned Dozer Line
- Planned Fuel Break
- Planned Hand Line
- Planned Mixed Construction Line
- Planned Road as Line
- Planned Secondary Line
- Access or Improved Road
- Highlighted Feature
- Other
- Retardant Drop
- Temporary Flight Restriction
- Fire Edge
- Contained Line
- Other Property
- Pump
- Water Tank
- Retardant Avoidance
- Forest Service Land
- State Lands
- Bureau of Land Management Lands

B. Krausmann
8/30/2021 2147
Acres from IR 8/28/2021 @ 2000 PDT
North American 1983 Datum, LatLong Grid



DIV C

DIV A

DIV W

DIV M

LAKE PEND OREILLE

Boat Ramp Roadless Area