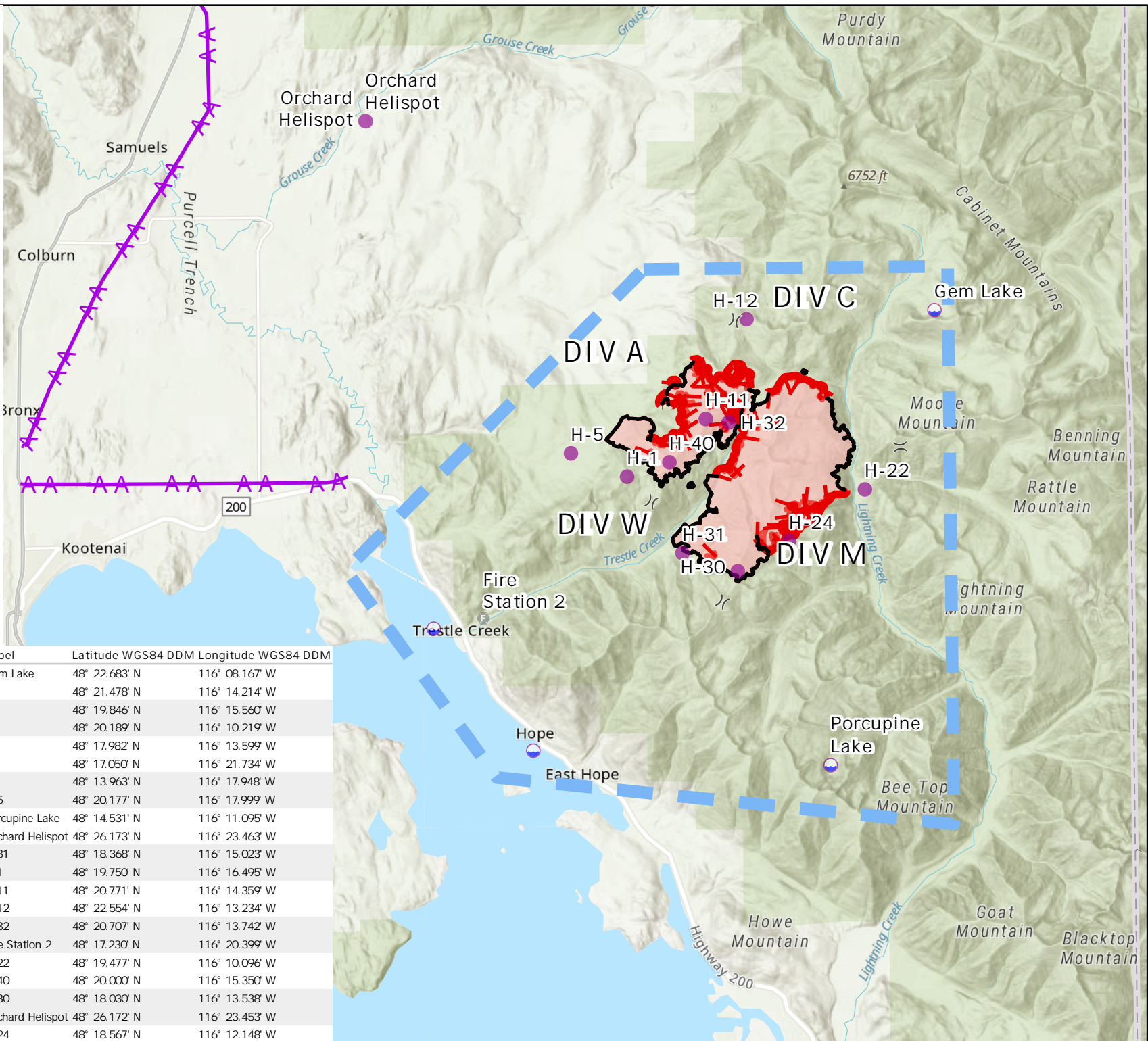


Air Operations
Trestle Creek Complex
IDIPF-000452
6697 Acres
09/01/2021 Day

-  Dip Site
-  Helispot
-  Division Break
-  Fire Station
-  Aerial Hazard
-  Temporary Flight Restriction
-  Fire Edge
-  Contained Line
-  Wildfire Daily Fire Perimeter



B. Krausmann
09/01/2021
North American 1983
Datum.



Incident Name	FC Point Type	Label	Latitude WGS84 DDM	Longitude WGS84 DDM
Trestle Creek Complex	Dip Site	Gem Lake	48° 22.683' N	116° 08.167' W
Trestle Creek Complex	Division Break		48° 21.478' N	116° 14.214' W
Trestle Creek Complex	Division Break		48° 19.846' N	116° 15.560' W
Trestle Creek Complex	Division Break		48° 20.189' N	116° 10.219' W
Trestle Creek Complex	Division Break		48° 17.982' N	116° 13.599' W
Trestle Creek Complex	Dip Site		48° 17.050' N	116° 21.734' W
Trestle Creek Complex	Dip Site		48° 13.963' N	116° 17.948' W
Trestle Creek Complex	Helispot	H-5	48° 20.177' N	116° 17.999' W
Trestle Creek Complex	Dip Site	Porcupine Lake	48° 14.531' N	116° 11.095' W
Trestle Creek Complex	Helispot	Orchard Helispot	48° 26.173' N	116° 23.463' W
Trestle Creek Complex	Helispot	H-31	48° 18.368' N	116° 15.023' W
Trestle Creek Complex	Helispot	H-1	48° 19.750' N	116° 16.495' W
Trestle Creek Complex	Helispot	H-11	48° 20.771' N	116° 14.359' W
Trestle Creek Complex	Helispot	H-12	48° 22.554' N	116° 13.234' W
Trestle Creek Complex	Helispot	H-32	48° 20.707' N	116° 13.742' W
Trestle Creek Complex	Fire Station	Fire Station 2	48° 17.230' N	116° 20.399' W
Trestle Creek Complex	Helispot	H-22	48° 19.477' N	116° 10.096' W
Trestle Creek Complex	Helispot	H-40	48° 20.000' N	116° 15.350' W
Trestle Creek Complex	Helispot	H-30	48° 18.030' N	116° 13.538' W
Trestle Creek Complex	Helispot	Orchard Helispot	48° 26.172' N	116° 23.453' W
Trestle Creek Complex	Helispot	H-24	48° 18.567' N	116° 12.148' W