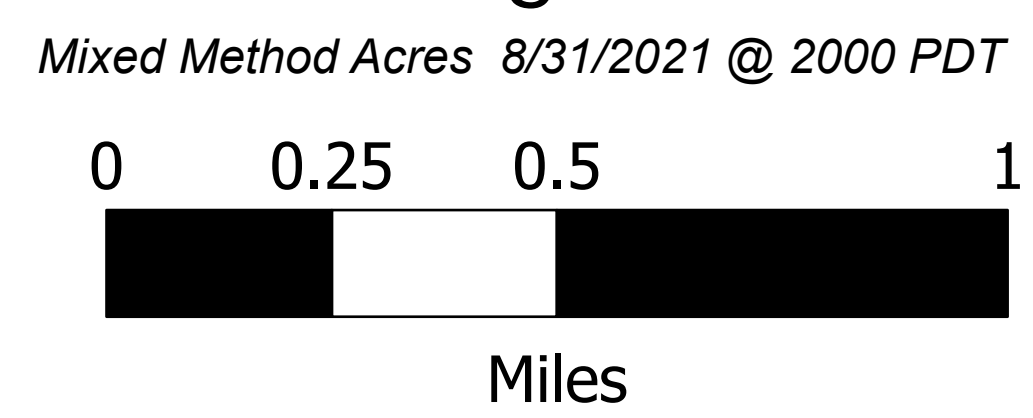
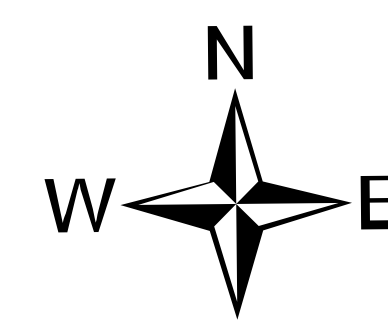


Briefing

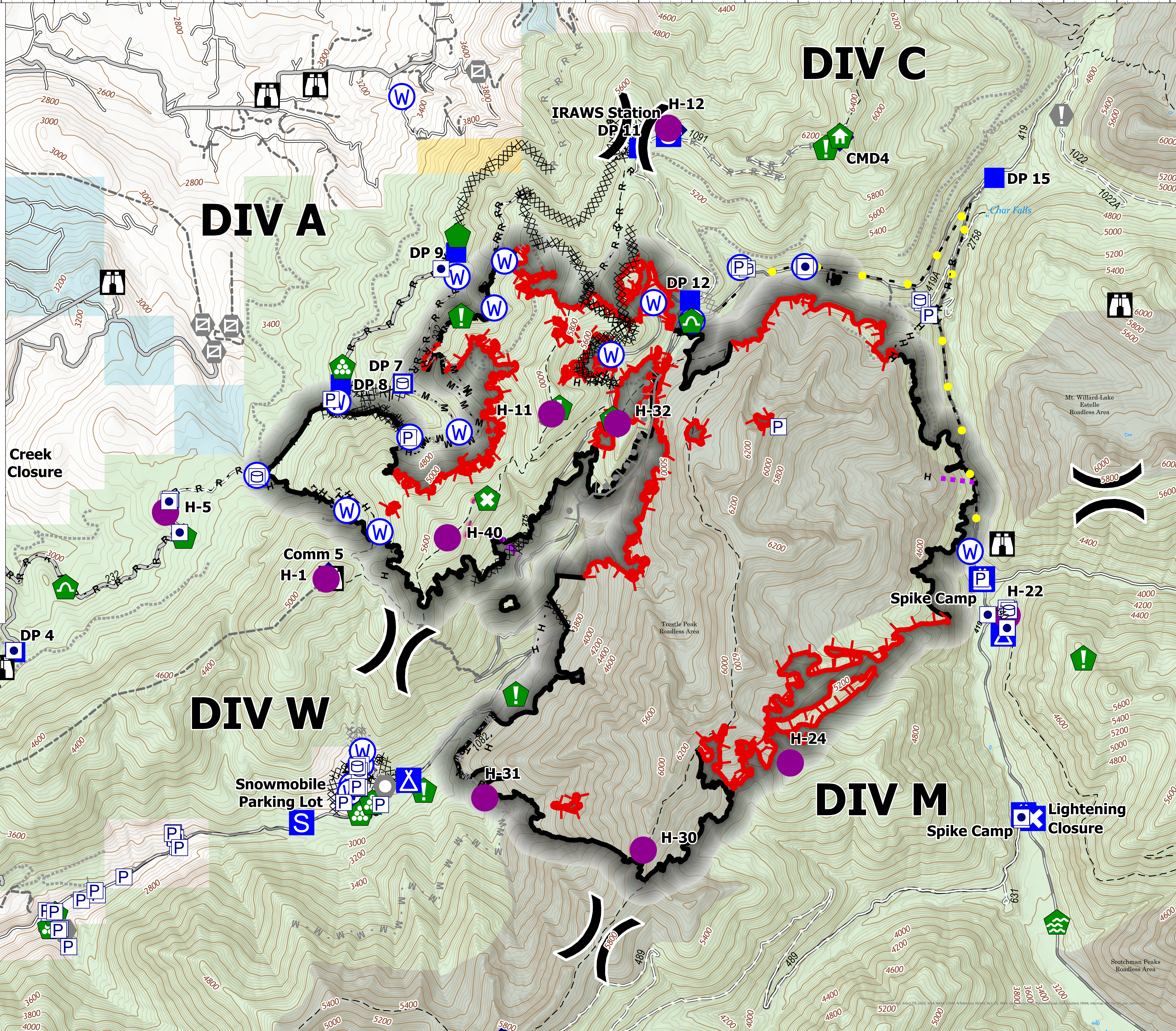
Trestle Creek Complex
IDIPF-000452
6645 acres
09/02/2021



- Dip Site
- Holspot
- Division Break
- Drop Point
- Closure
- Camp
- Staging Area
- Lookout
- Value at Risk
- Landmark
- Gate
- Fire Station
- Water Development or Draft Site
- Structure Wrap
- Retardant in Avoidance Area
- Resource Location
- Repair Point
- Landing or Log Deck
- Dozer Push
- Culvert
- Clean Up Area
- Mobile Weather Unit
- Repeater
- Water Source
- Restricted Water Source
- Completed Dozer Line
- Completed Fuel Break
- Completed Hand Line
- Completed Mixed Construction Line
- Closure
- Completed Road as Line
- Planned Burnout
- Planned Dozer Line
- Planned Fuel Break
- Planned Hand Line
- Planned Mixed Construction Line
- Planned Road as Line
- Planned Secondary Line
- Access or Improved Road
- Highlighted Feature
- Other
- Retardant Drop
- Route
- Fire Edge
- Contained Line
- Forest Service Land
- State Lands
- Bureau of Land Management Lands



B. Krausmann,
K. Russell
9/1/2021 2:05
North American 1983 Datum,
Lat,Long Grid



Creek Closure

DIV C

DIV A

DIV W

DIV M

IRAWS Station
H-12

Comm 5
H-1

Snowmobile
Parking Lot

Spike Camp
H-22

Fire
Station 2

Lightning
Closure

Spike Camp