

116°22'W

116°20'W

116°18'W

116°16'W

116°14'W

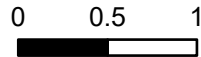
116°12'W

116°10'W

IAP

Trestle Creek Complex
ID-IPF-000452
09/05/2021 Day

6641 acres at
9/03/2021



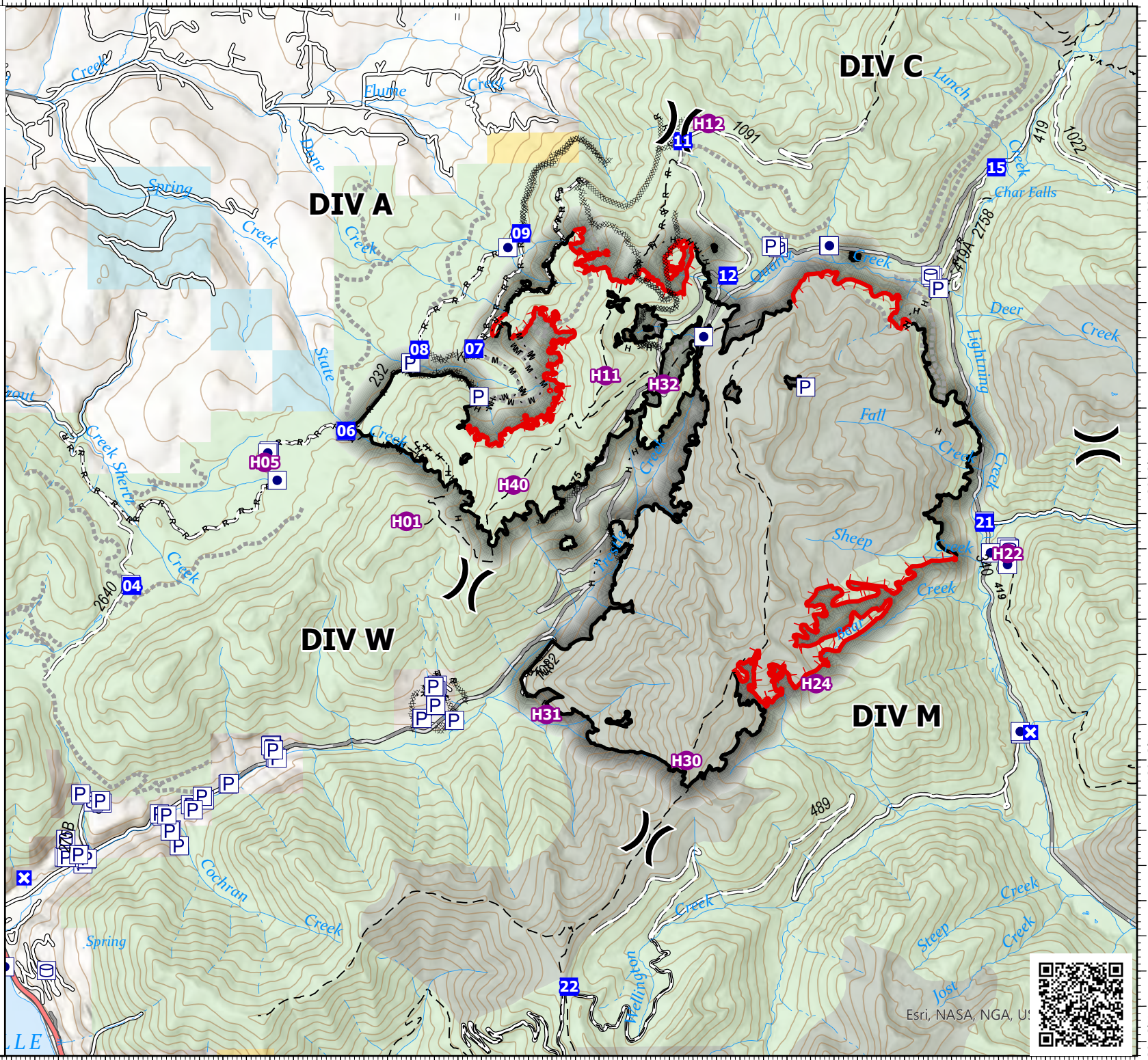
Miles



- Dip Site
- Helispot
- Division Break
- Drop Point
- Closure
- Completed Dozer Line
- Completed Fuel Break
- Completed Hand Line
- Completed Mixed Construction Line
- Completed Road as Line
- Fire Edge
- Contained Line
- Forest Service Land
- State Lands
- Bureau of Land Management Lands

K. Russell
9/4/2021 2050

North American 1983
Datum. Lat/Long Grid



Esri, NASA, NGA, U.S. Geological Survey



48°22'N

48°20'N

48°18'N

48°16'N

48°22'N

48°20'N

48°18'N

48°16'N

116°22'W

116°20'W

116°18'W

116°16'W

116°14'W

116°12'W

116°10'W