

116°22'W

116°20'W

116°18'W

116°16'W

116°14'W

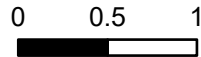
116°12'W

116°10'W

# IAP

Trestle Creek Complex  
ID-IPF-000452  
09/09/2021 Day

6631 acres at  
9/04/2021



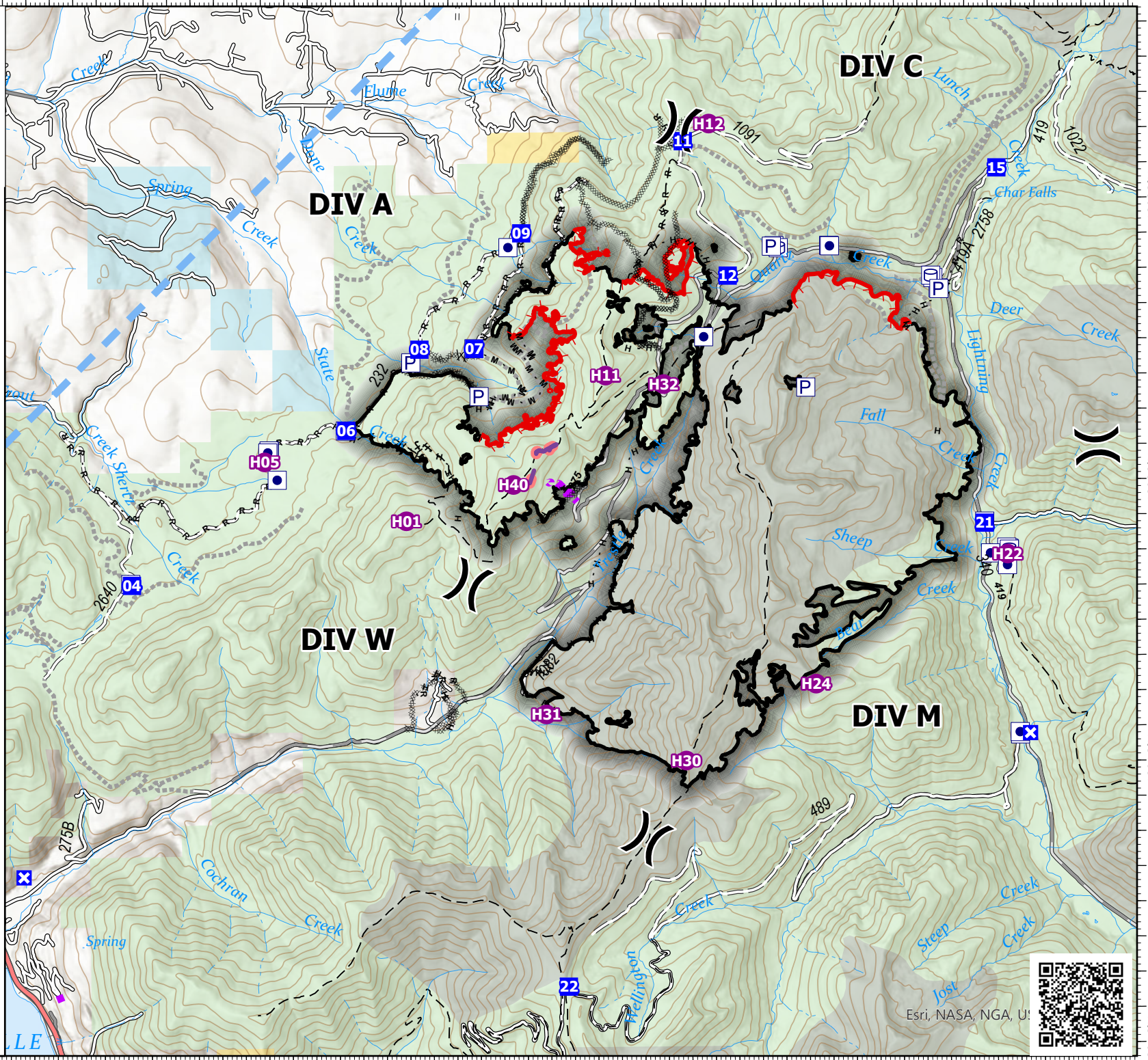
Miles



- Dip Site
- Helispot
- Division Break
- Drop Point
- Closure
- Completed Dozer Line
- Completed Fuel Break
- Completed Hand Line
- Completed Mixed Construction Line
- Completed Road as Line
- Fire Edge
- Contained Line
- Retardant Drop
- Route
- Temporary Flight Restriction
- Forest Service Land
- State Lands
- Bureau of Land Management Lands

K. Russell  
9/8/2021 1918

North American 1983  
Datum. Lat/Long Grid



Esri, NASA, NGA, U.S. Geological Survey



48°22'N

48°20'N

48°18'N

48°16'N

48°22'N

48°20'N

48°18'N

48°16'N

116°22'W

116°20'W

116°18'W

116°16'W

116°14'W

116°12'W

116°10'W